



TRAILBREAKER
RESOURCES LTD.

TSX.V: TBK

A Canadian mineral exploration company focused on precious metals and copper in British Columbia and Yukon Territory.





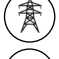


British Columbia

Vancouver

CASTLE ROCK PROJECT

AVAILABLE FOR OPTION

PROJECT HIGHLIGHTS

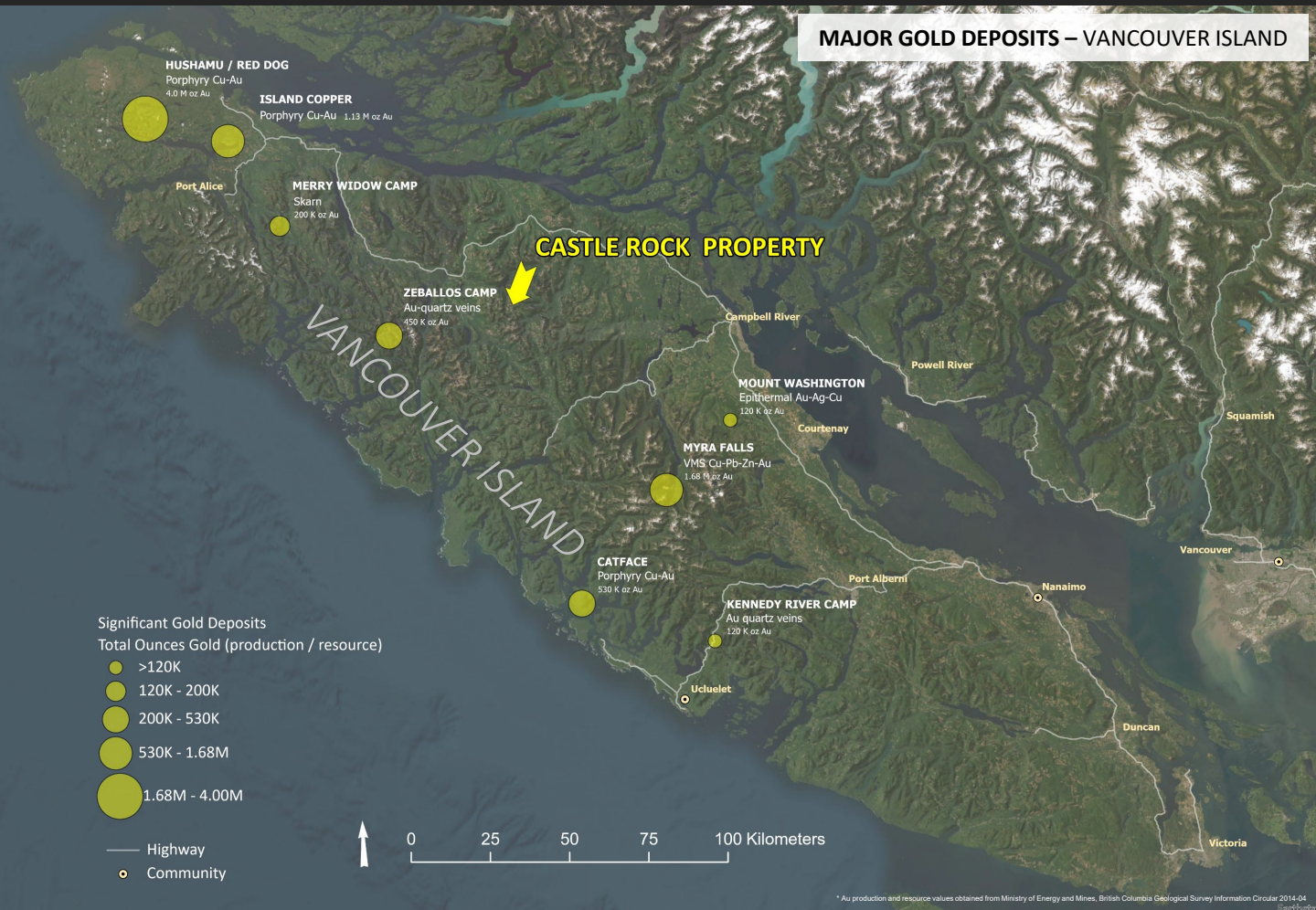
-  **LOCATION** - Mining-friendly Vancouver Island (proven track record of mine development)
-  **ACCESS** - Extensive logging road network with easy access to Highway 19
-  **INFRASTRUCTURE** - 10 km from major transmission line and 75 km from a deep water seaport
-  **LARGE DEPOSIT POTENTIAL** - Multiple mineralized zones over kilometers of strike
-  **OPPORTUNITY** - A recent discovery that is de-risked, drill ready, and poised for discovery

OVERVIEW

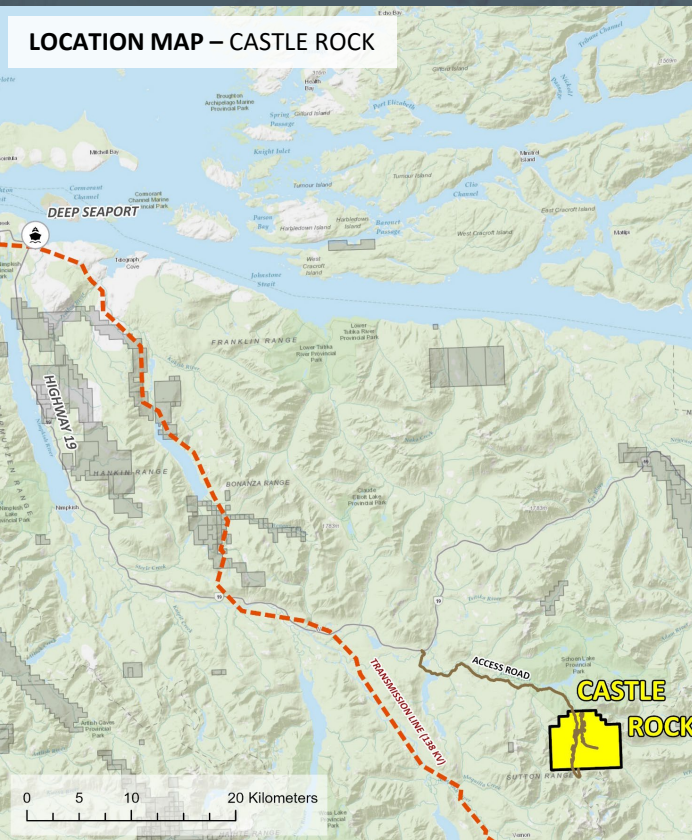
The Castle Rock project is an early-stage copper-gold porphyry prospect located in northern Vancouver Island. Northern Vancouver Island is host to several large Cu-Au porphyry deposits including Northisle's Hushamu deposit that contains an inferred resource of over 4.0M oz AuEq and BHP Billiton's past-producing Island Copper deposits that produced >2.7B lb Cu and >1.0M oz Au. Castle Rock is a new gold discovery within a part of Vancouver Island that has seen limited exploration to date and was not previously known for its gold potential. Development of new logging roads allowed for a property-scale geochemical silt survey in 2011 which led to the discovery of the Heart Zone: a large gossanous outcrop with a chip sample returning 2.08 g/t Au over a 30 meter interval. No widespread systematic geochemical or geophysical work has ever been conducted on the property nor have any targets been drill tested.

LOCATION AND INFRASTRUCTURE

MAJOR GOLD DEPOSITS – VANCOUVER ISLAND



LOCATION MAP – CASTLE ROCK

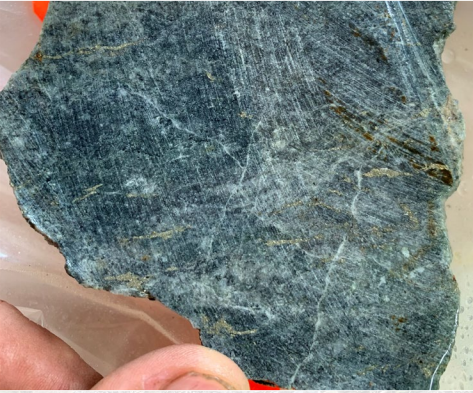


- 3,108 ha claim package, 100%-owned by Trailbreaker Resources & Cazador Resources (in partnership).
- Located in northern Vancouver Island, British Columbia, approximately 70 km northwest of Campbell River.
- The small town of Woss is located 30 km northwest of the property and the deep water seaport of Port McNeill is located 75 km to the north.
- Vehicle accessible via 25 km of well-maintained forest service roads branching off Highway 19.
- A major transmission line servicing the community of a Gold River is located 10 km west of the property.

REGIONAL GEOLOGY AND DEPOSIT MODEL

PORPHYRY STYLE MINERALIZATION

Disseminated pyrite and chalcopyrite in altered granodiorite, **0.99 g/t Au**, 526 ppm Cu



SKARN STYLE MINERALIZATION

Massive sulphide lens in meta-siltstone, **2.22 g/t Au**

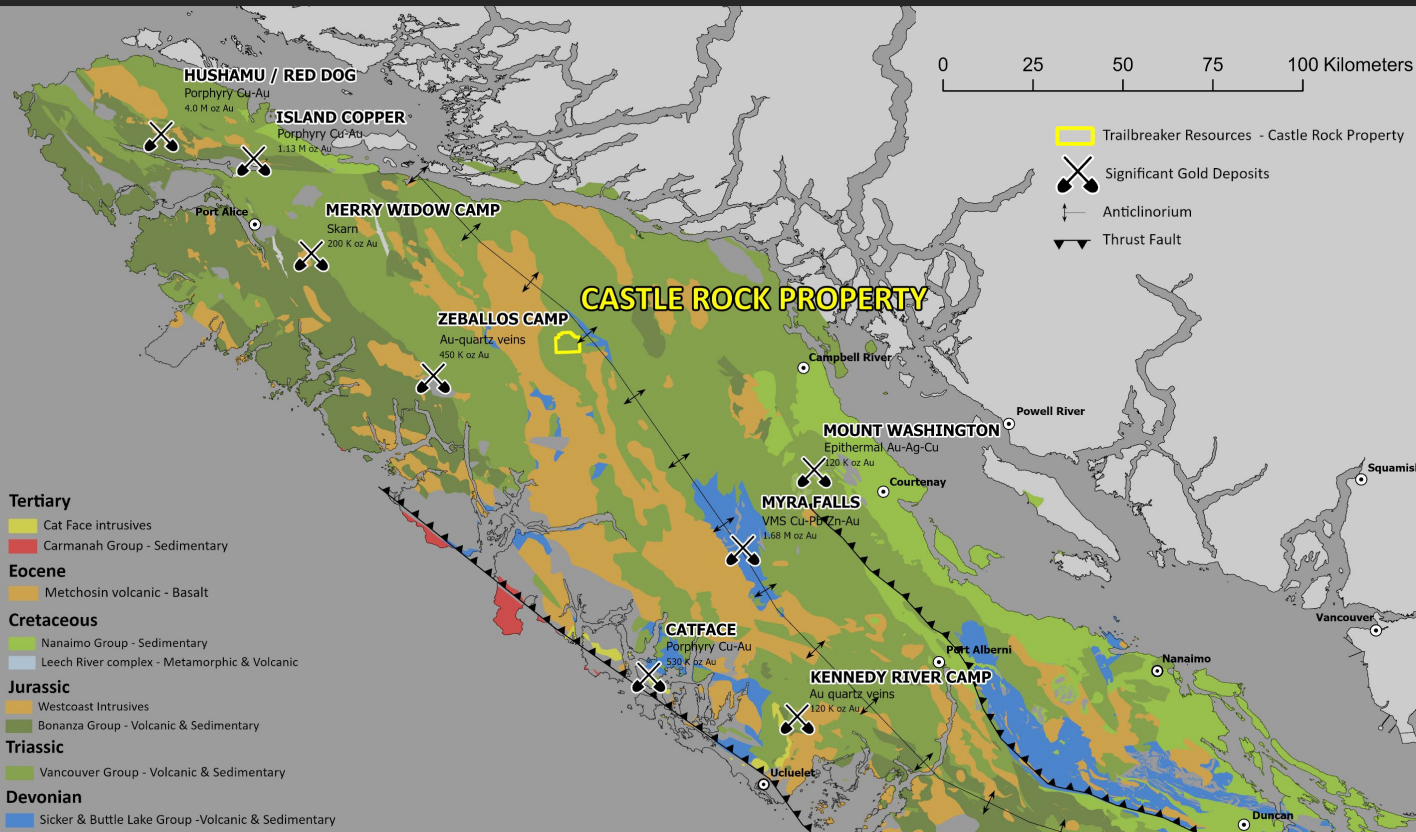


Cu-Au Porphyry deposit potential

- The Heart zone showing hosts consistent gold values within a hydrothermal altered and brecciated granodiorite dyke. This may represent the upper limits of a gold-enriched porphyry system with potential for higher copper values at depth.
- The Schoen Creek drainage was not previously known for gold mineralization or widespread intrusive magmas prior to 2010. Recent logging cut blocks and roads have provided access, allowing for these new discoveries.
- Examples of nearby Cu-Au porphyry deposits include the **past-producing Island Copper deposit**, mined by BHP Billiton, and the **Hushamu deposit that hosts over 4.0 Moz AuEq.**

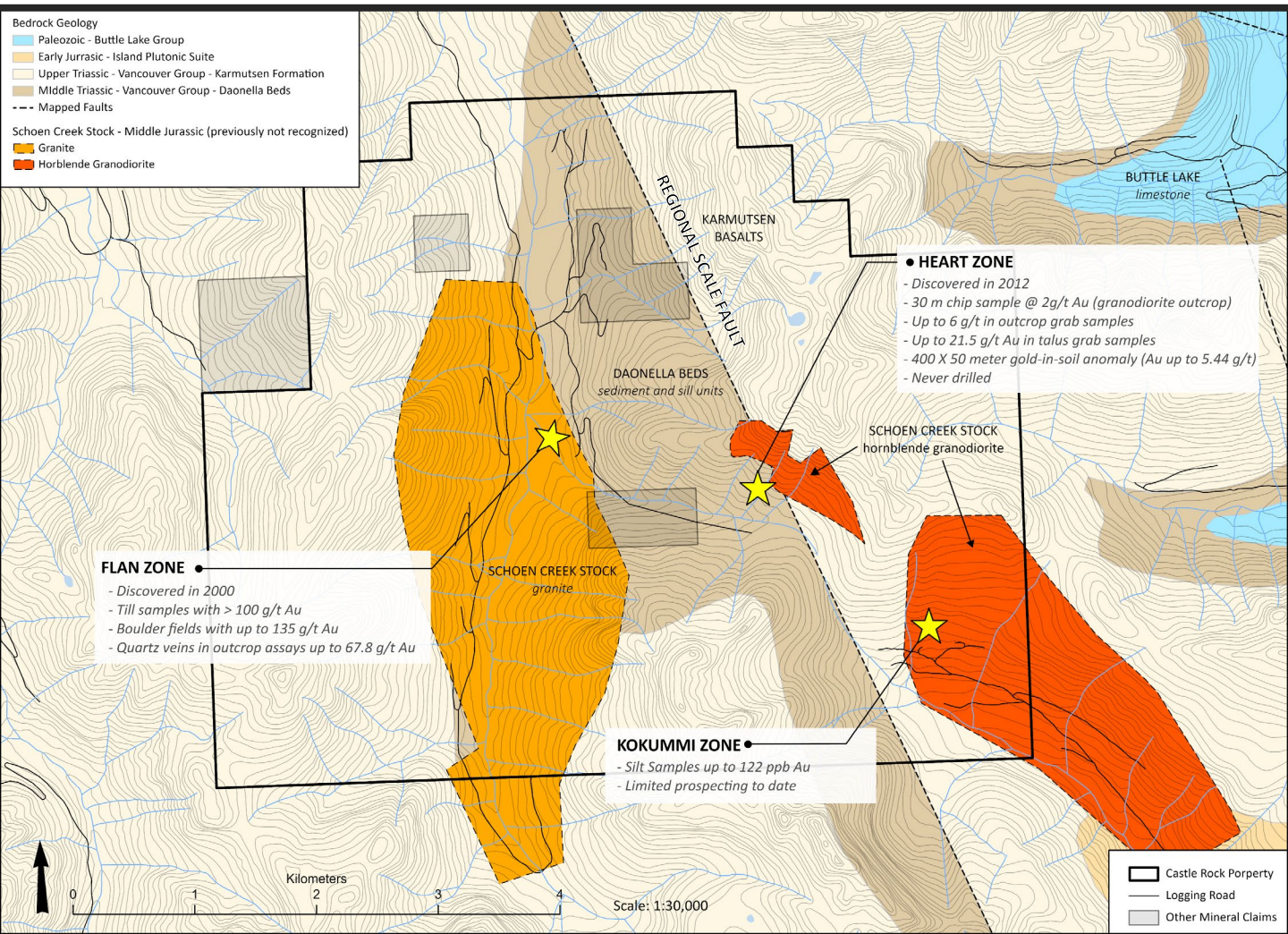
Au Skarn and VMS deposit potential

- Higher-grade gold found in massive sulphide lenses hosted in metasediments sampled near the margins of granitic dykes and stocks suggests potential for a gold skarn deposit. The **Merry Widow Camp (>200 Koz Au past production)**, ~75km northwest, is a nearby example of a gold endowed skarn deposit hosted in a similar geological setting.
- The **Myra Falls VMS deposit (>1.5 Moz Au past production)**, is hosted along the same regional-scale anticlinorium (~100 km southeast) and is associated with similar Paleozoic basement rocks (Sicker and Buttle groups) to that of the Castle Rock property.



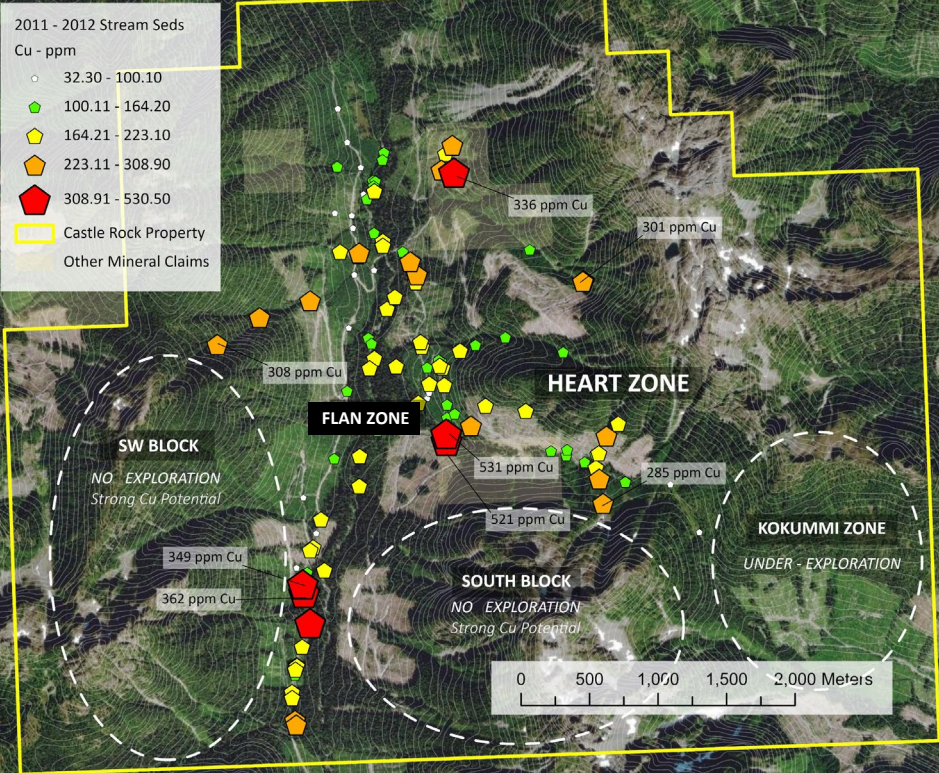
PROPERTY GEOLOGY & MINERALIZATION

- The property covers a middle Triassic unit of black shale and siliceous tuffaceous cherts (Daonella beds) which is overlain by the lower Triassic Karmutsen basalts - a thick pile of pillowed and massive sub-aqueous to sub-aerial lavas.
- The recent logging activity in the Schoen Creek drainage has exposed many outcrops in the lower valleys, resulting in a significant contrast to the previous geological mapping efforts by the Geological Survey of Canada.
 - New mapping efforts have shown widespread intrusive activity in a area previously not recognized for intrusive magmas.
- Intrusive rocks include Triassic gabbro sills and later Jurassic granodiorite plutons to the northwest and to the southeast. Smaller dikes and plutons of Jurassic age intrusive (Schoen Creek stock) are observed throughout the property with the Heart zone being comprised of this unit.
- A north-trending, regional-scale fault zone cuts through the center of the property, dividing the metasediments and Karmutsen basalts. Dikes and small plutons of granodiorite tend to intrude along this fault zone. The Heart zone straddles this fault zone and is comprised of Jurassic age dykes that have been emplaced in the fault structure.



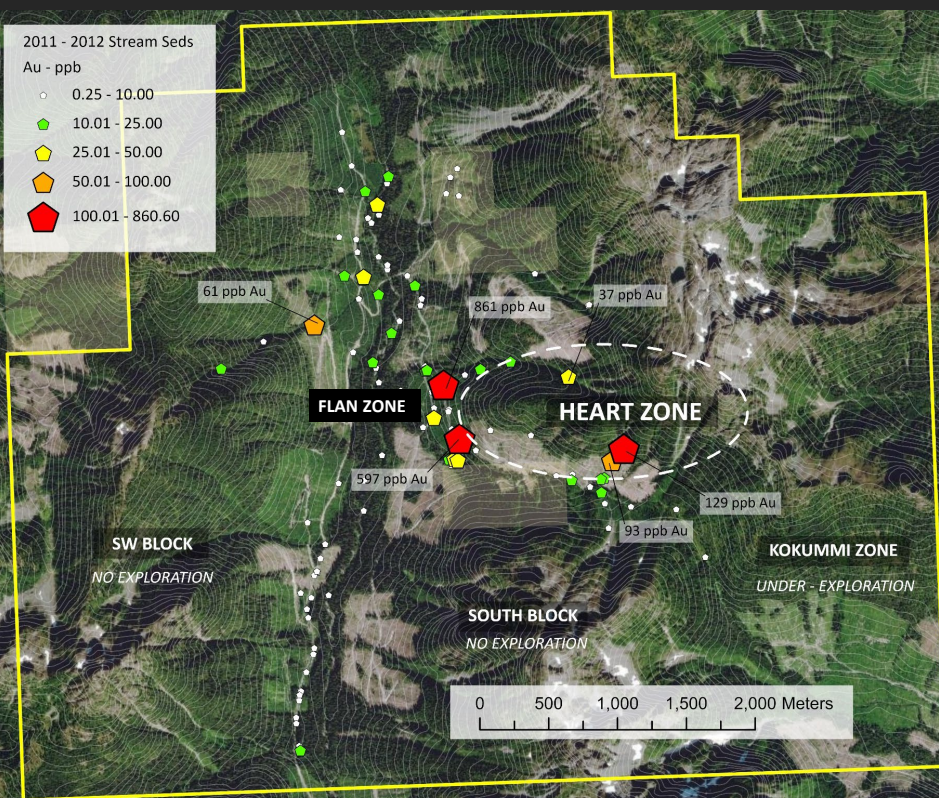
EXPLORATION HISTORY

- The Schoen Creek drainage was first prospected in the early 2000s. Prospecting efforts followed up on anomalous Cu-Au regional stream sediment samples, which led to the Flan Zone discovery near the confluence of Jackpot and Schoen Creeks. Vuggy quartz veins in outcrop yielded up to **67.8 g/t Au**.
- Prospecting in the vicinity of the Flan showing continued to return encouraging gold values with large **boulders assaying up to 135 g/t Au** and till samples with gold up to **104 g/t Au**.
- In 2011, the first significant exploration program was conducted on the property and involved property-wide stream sediment sampling which led to several new exploration targets, ultimately leading to the discovery of the Heart zone.
- In 2013, the Heart showing was chip sampled which revealed a gossanous granodiorite breccia returning an assay **2.08 g/t Au over 30 meters**.
- The claim package sat idle with no work filed and expired in early 2022. Trailbreaker recently acquired the property via staking and partnership with Cazador Resources Ltd.



COPPER

STREAM SEDIMENT SAMPLES (2011 - 2012)

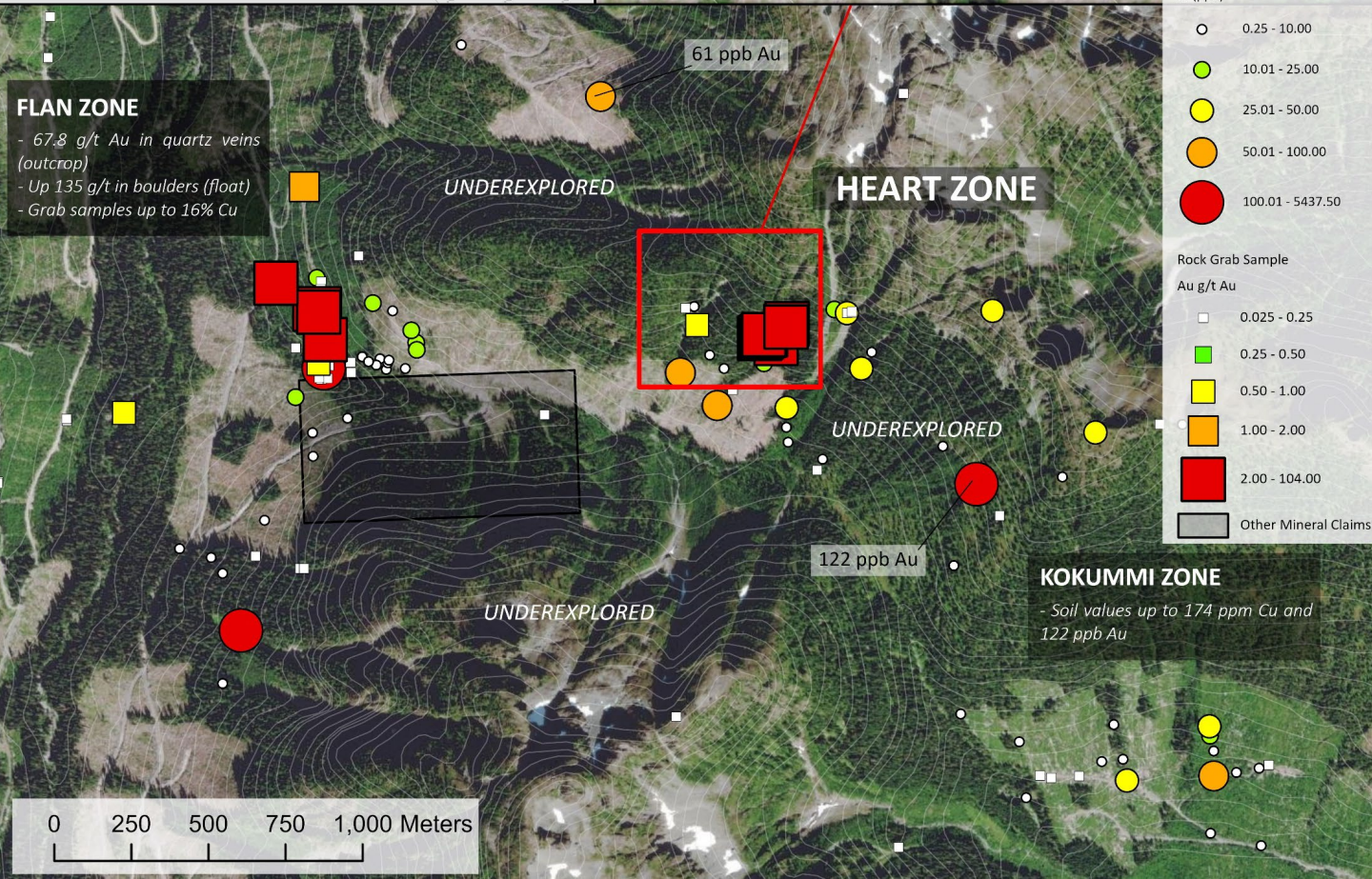
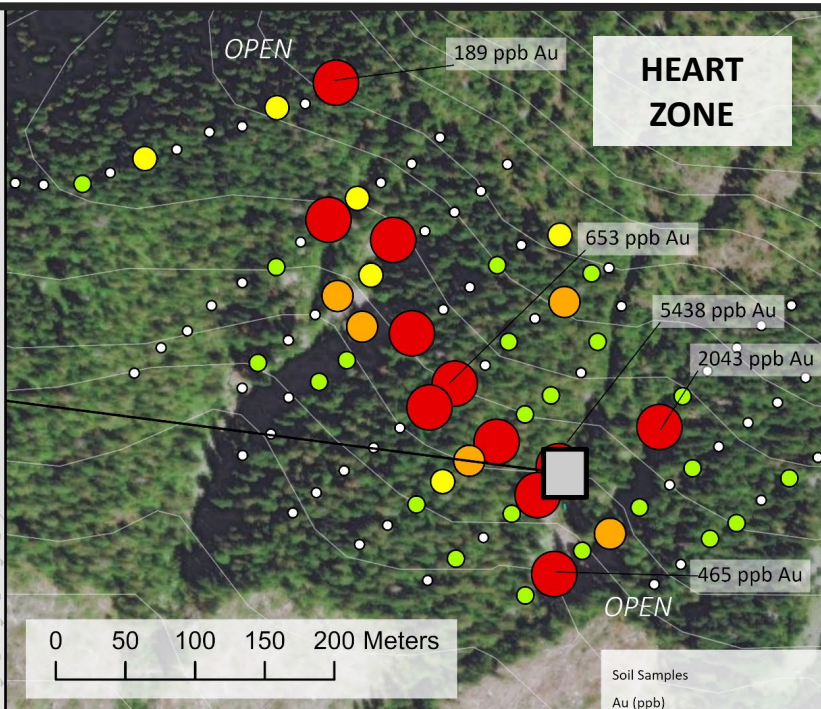
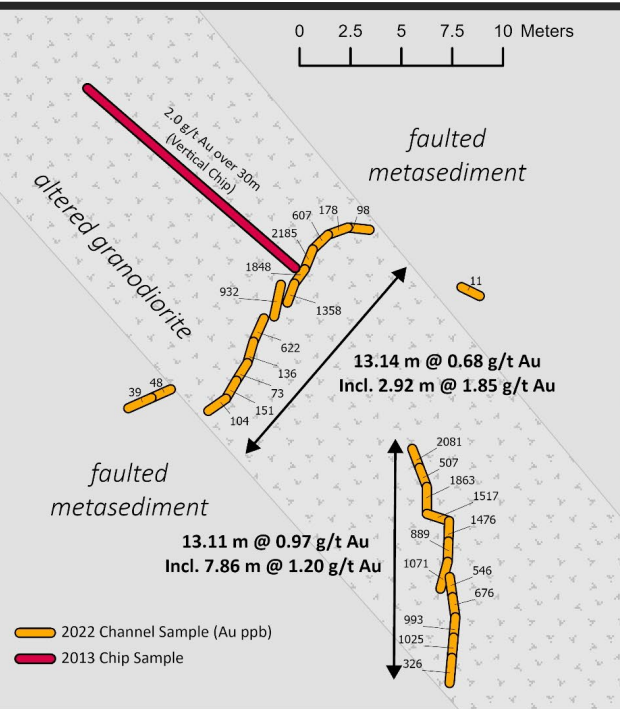


GOLD

STREAM SEDIMENT SAMPLES (2011 - 2012)

2022 EVALUATION PROGRAM

- A 3-day, first-pass evaluation program was completed at the Heart zone by Trailbreaker Resources in 2022. A total of 32 meters of channel samples, 9 rock grab samples, and 116 soil samples were acquired.
- Channel sampling confirmed historic grades and thickness of the auriferous intrusive dyke and a tight-spaced soil geochemical survey traced the mineralized dyke 400 meters to the northwest (remains open).



Soil Samples	
Au (ppb)	
○	0.25 - 10.00
●	10.01 - 25.00
●	25.01 - 50.00
●	50.01 - 100.00
●	100.01 - 5437.50

Rock Grab Sample	
Au g/t Au	
□	0.025 - 0.25
■	0.25 - 0.50
■	0.50 - 1.00
■	1.00 - 2.00
■	2.00 - 104.00
■	Other Mineral Claims

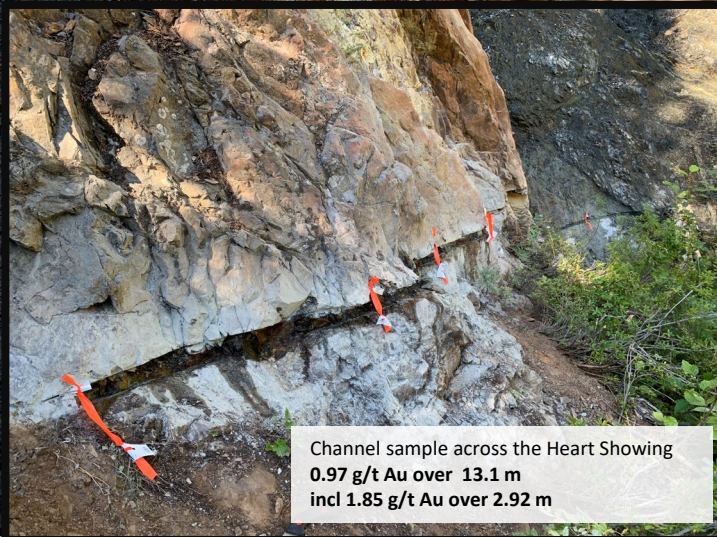
HEART ZONE

- The Heart zone is characterized by a steeply dipping, ~15-meter-wide, strongly altered and brecciated granodiorite dyke that strikes northwest-southeast. The showing is only exposed in a steeply incised creek drainage with the rest of the dyke covered by glacial till and first growth forest. Gold mineralization is associated with disseminated and veined pyrite, chalcopyrite, and arsenopyrite. The exposed dyke averages 0.5 - 1.0 g/t Au with a higher-grade 3-meter-wide core averaging 2 g/t Au. Higher grade gold mineralization has been sampled in massive pyrite lenses hosted in the metasediments surrounding the auriferous dyke with historic grab sample assays up to 21 g/t Au.
- 2022 Evaluation Program Highlights:
 - Prospecting returned a 1.0 meter rock chip sample @ 3.23 g/t Au confirming historic chip samples of up to 3 m @ 5.0 g/t Au
 - Channel sampling at the main showing confirmed continuity of Au grades
 - 13.11 m @ 0.97 g/t Au incl. 7.86 m @ 1.20 g/t Au
 - 13.14 m @ 0.68 g/t Au incl. 2.92 m @ 1.85 g/t Au
- A detailed soil survey outlined a 400 X 50 meter northwest-southeast trending gold-in-soil anomaly with assays up to 5.4 g/t Au.

HEART MAIN ZONE – channel sampling

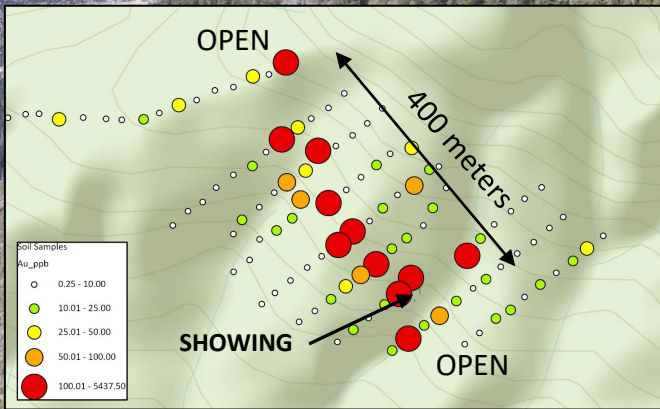
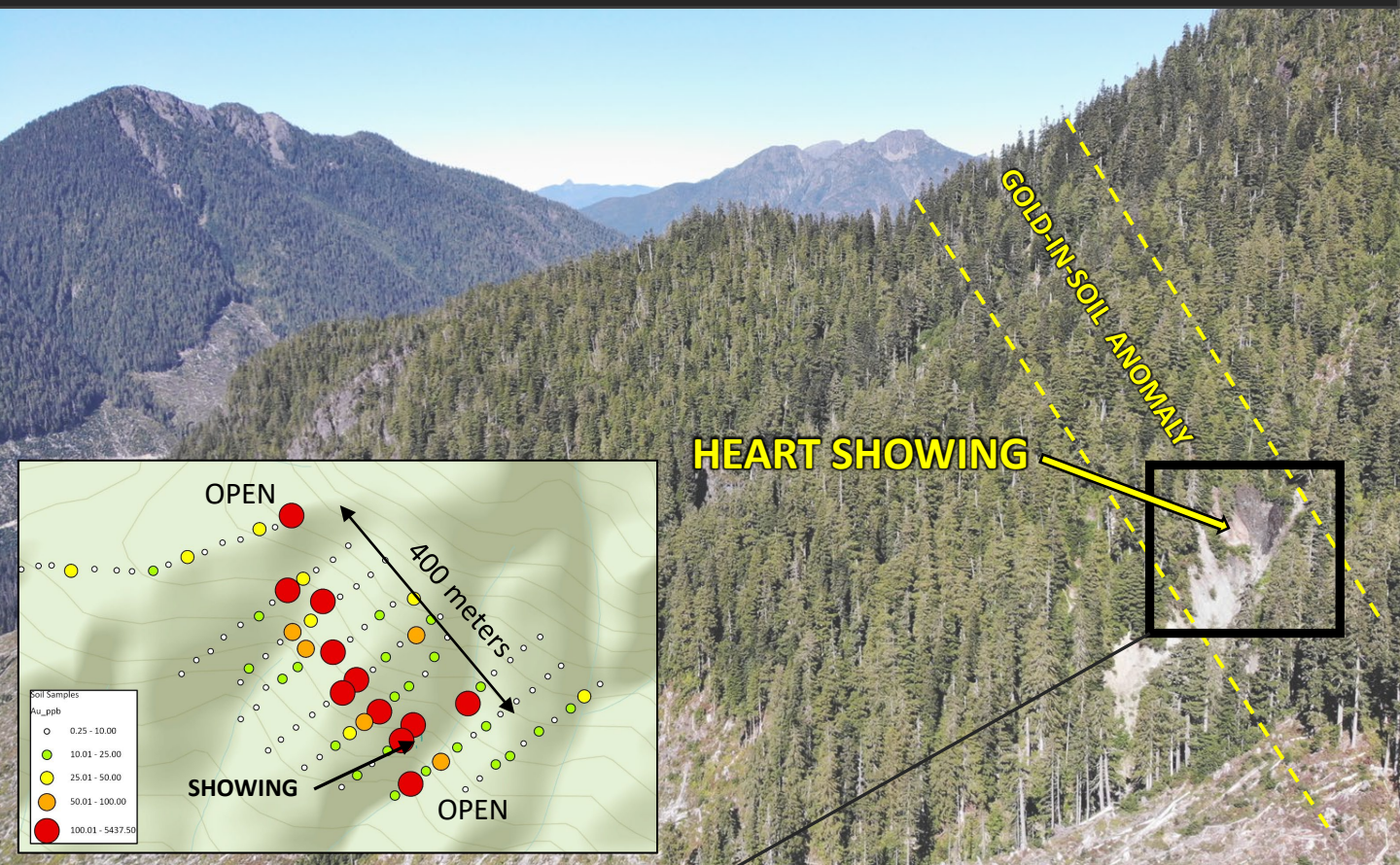


Brecciated hydrothermal altered granodiorite porphyry with pyrite - arsenopyrite stockwork (2.19 g/t Au over 1.05 m)

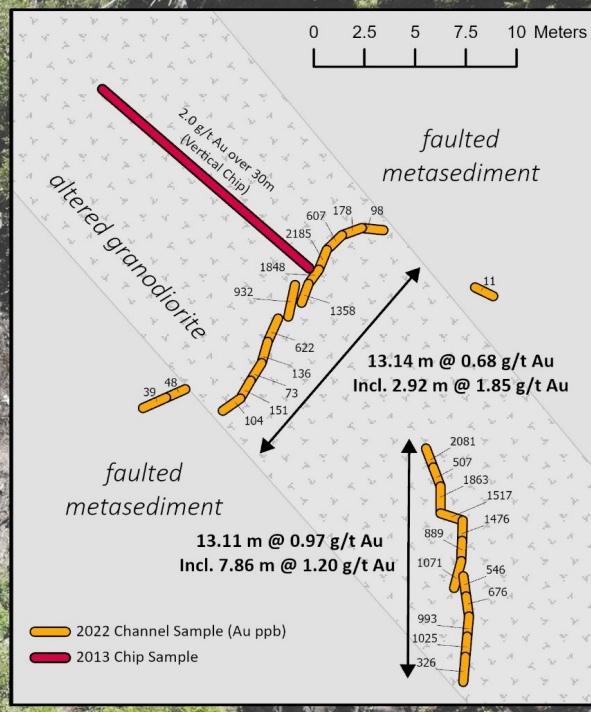


Channel sample across the Heart Showing
0.97 g/t Au over 13.1 m
incl 1.85 g/t Au over 2.92 m

HEART ZONE – SOIL GEOCHEMISTRY



HEART SHOWING - CHANNEL SAMPLE RESULTS (2022)



✓ Underexplored

- *A new discovery in 2012 (never followed up)*
 - *Area was previously not recognized for its gold potential*
 - *Recent logging activity has provided vehicle access for the first time*
- *No systematic exploration in the past*
- *Never before drilled*

✓ Huge Exploration Potential

- *Strong Cu-Au silt and soil anomalies remain to be followed up*
- *Heart zone has been traced over 400 meters on surface and remains open*
- *High-grade gold mineralization (grab samples up to 4 oz/ton)*
- *Multiple deposit style targets*

RECOMMENDED EXPLORATION

- A property-wide geochemical survey with tighter spaced soil sampling over the Heart and Kokummi zones.
- Property-wide airborne electromagnetic and LiDAR surveys to highlight structural features for continued prospecting and drilling targets. An EM survey would be instrumental in outlining the sulphide-rich dykes and lenses.
- Follow-up prospecting, geological mapping and geochemical sampling in preparation for a phase 2 diamond drilling program.
- Diamond drilling of the main Heart zone
 - Test 400 meter northwest trending surface footprint as displayed by the gold-in-soil anomaly.

Please contact us for more information:

Daithi Mac Gearailt, *President and CEO*

Tel: (604) 681-1820

info@trailbreakerresources.com



SHARE STRUCTURE (January 2023)

Total issued and outstanding common shares: 12,719,614

Total warrants outstanding: 3,224,600 exercisable between \$0.25

Total stock options outstanding: 2,427,500 exercisable between \$0.24 ~ \$5.95

Total fully diluted: 18,371,714

www.trailbreakerresources.com



TRAILBREAKER
RESOURCES LTD.

TSX.V: TBK

A Canadian mineral exploration company focused on precious metals and copper in British Columbia and Yukon Territory.