



CORPORATE PRESENTATION

MARCH 2020

goldstrikeresources.com

info@goldstrikeresources.com

“We have high-grade in our veins”

TSX-V: GSR

NASDAQ: APRAF

FRANKFURT: KCG2



Forward-Looking Statements:

Forward looking statements contained in this Presentation that are not historical facts are "forward-looking information" or "forward-looking statements" (collectively, "Forward-Looking Information") within the meaning of applicable Canadian securities legislation and the United States Private Securities Litigation Reform Act of 1995. Forward-Looking Information includes, but is not limited to, disclosure regarding possible events, conditions or financial performance that is based on assumptions about future economic conditions and courses of action; expectations regarding future exploration and drilling programs; and receipt of related permitting. In certain cases, Forward-Looking Information can be identified by the use of words and phrases such as "anticipates", "expects", "understanding", "has agreed to" or variations of such words and phrases or statements that certain actions, events or results "would", "occur" or "be achieved". Although Goldstrike has attempted to identify important factors that could affect Goldstrike and may cause actual actions, events or results to differ materially from those described in Forward-Looking Information, there may be other factors that cause actions, events or results not to be as anticipated, estimated or intended. In making the forward-looking statements in this Presentation, if any, Goldstrike has applied several material assumptions, including the assumption that general business and economic conditions will not change in a materially adverse manner. There can be no assurance that Forward-Looking Information will prove to be accurate, as actual results and future events could differ materially from those anticipated in such statements. Accordingly, readers should not place undue reliance on Forward-Looking Information. Except as required by law, Goldstrike does not assume any obligation to release publicly any revisions to Forward-Looking Information contained in this Presentation to reflect events or circumstances after the date hereof or to reflect the occurrence of unanticipated events – This Presentation is not for redistribution.



Goldstrike Resources is a mineral exploration company focused purely on gold in North America. The company is currently advancing it's main asset, the Plateau Property; a newly discovered, district-scale gold system in the Selwyn Basin, 120 km east of Mayo, Yukon Territory. Beyond Plateau, the company's goals are to discover and advance high-grade gold projects throughout North America. Goldstrike and its team have a track record of successful project generation, effective grassroots exploration, and lasting community relations. We plan to continue adding to our portfolio and adding value for the shareholders.





Mr. Daithi Mac Gearailt **President, CEO and Director**

Mr. Mac Gearailt is a geologist graduated with honours from the National University of Ireland. He has worked as an exploration geologist for over 14 years in Alaska, Nevada, British Columbia and Yukon. During his career he has been involved in several new discoveries and has worked with both junior and senior mining companies covering project generation, property evaluation, and management of multimillion-dollar exploration and drilling programs. In addition to identifying, analyzing, strategizing and negotiating acquisitions or divestments of mineral properties, Mr. Mac Gearailt has also been instrumental in raising millions of dollars toward the financing of exploration projects.

Ewan Webster, Ph.D., Geologist **Director**

Dr. Ewan Webster is an exploration geologist who began his career in geology at the University of Glasgow, Scotland where he was awarded a First-Class Honours degree. Following this he went on to pursue a Geoscience B.C. funded Ph.D. at the University of Calgary. This focused on unraveling aspects of the structure, stratigraphy, tectonics, and metamorphism of southeastern British Columbia, to establish a sound geological framework in which to place the region's abundant and diverse mineral deposits. Ewan went on to become an instructor in the Geological Technology program at Yukon College. He is currently a senior consultant to the exploration team focused in NW British Columbia.

Lucy Zhang, CPA, CGA, MBA **Position: Director and Chief Financial Officer**

Ms. Lucy Zhang is a member of the Chartered Professional Accountants of British Columbia. She has an Honours BA from Suzhou University, China, and an MBA (Honors) from Royal Roads University. Ms. Zhang's recent experience has included controller positions in administration, accounting, and finance with publicly traded mining and exploration companies.

John A. Kuehne, M. Mgmt., CA, CPA **Director**

John A. Kuehne, M. Mgmt., CA, CPA (Illinois), is a management consultant in the business of advising, assisting and investing in both startups and small public companies. Previously, John was Chief Financial Officer of Doman Industries Limited. He began his career in corporate finance and accounting, spending over 9 years with Deloitte in Edmonton and Chicago. Mr. Kuehne has been appointed as an additional independent director and a member of the Audit Committee.

Bill Jung **Director**

Mr. Jung graduated in accounting at the University of British Columbia, is a former chartered accountant and has over 35 years of experience in the areas of finance and business. He has worked with a major international chartered accounting firm as well as in private industry. During the past 25 years Mr. Jung has mainly been involved in the management of companies publicly listed on the TSX Venture Exchange.



SHARE STRUCTURE

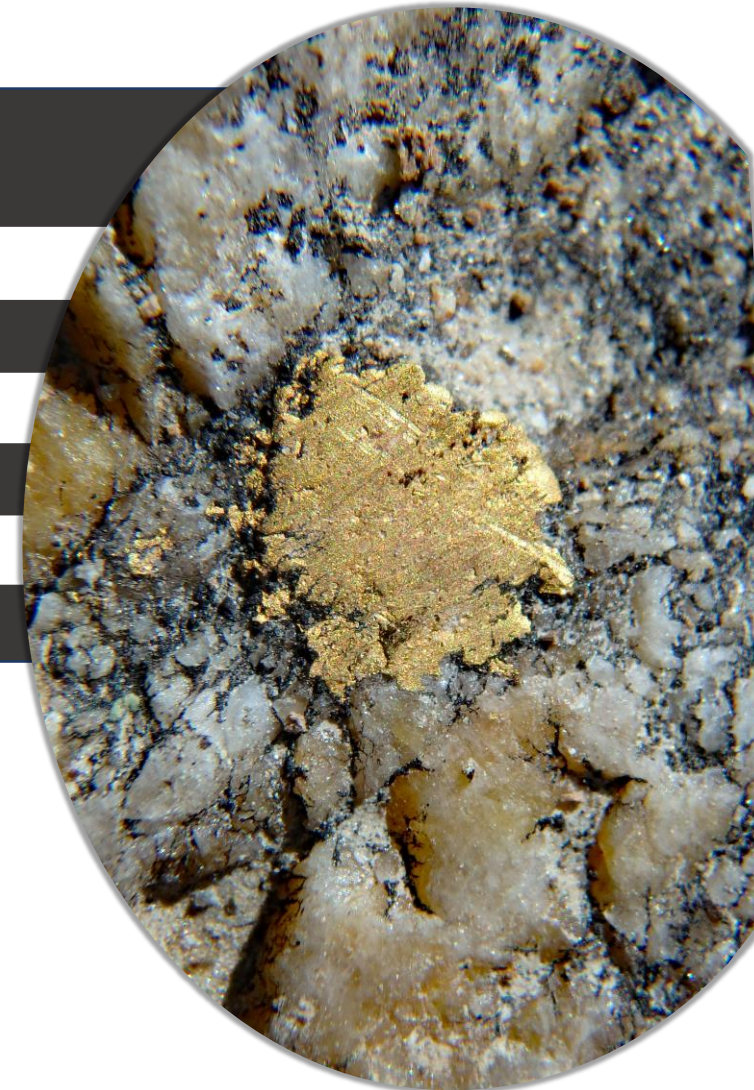
** Updated October 6, 2020*

Shares Outstanding	9,517,150
Fully Diluted	11,292,150
Options (\$0.24 – \$5.95)	1,775,000
Warrants	Nil
Cash	>\$2M CAD <small>* As of June 30th 2020</small>
52-Week Range	0.12 – 0.40

TSX-V: GSR

NASDAQ: APRAF

FRANKFURT: KCG2





ON TRACK FOR DISCOVERY



Main asset is 100% owned, 70 km long, district-scale, high-grade gold system with strong potential for discovery



Focused on mining-friendly jurisdictions in North America



No debt, strong cash position over \$2M CAD



Excellent share structure with <10M shares issued and outstanding

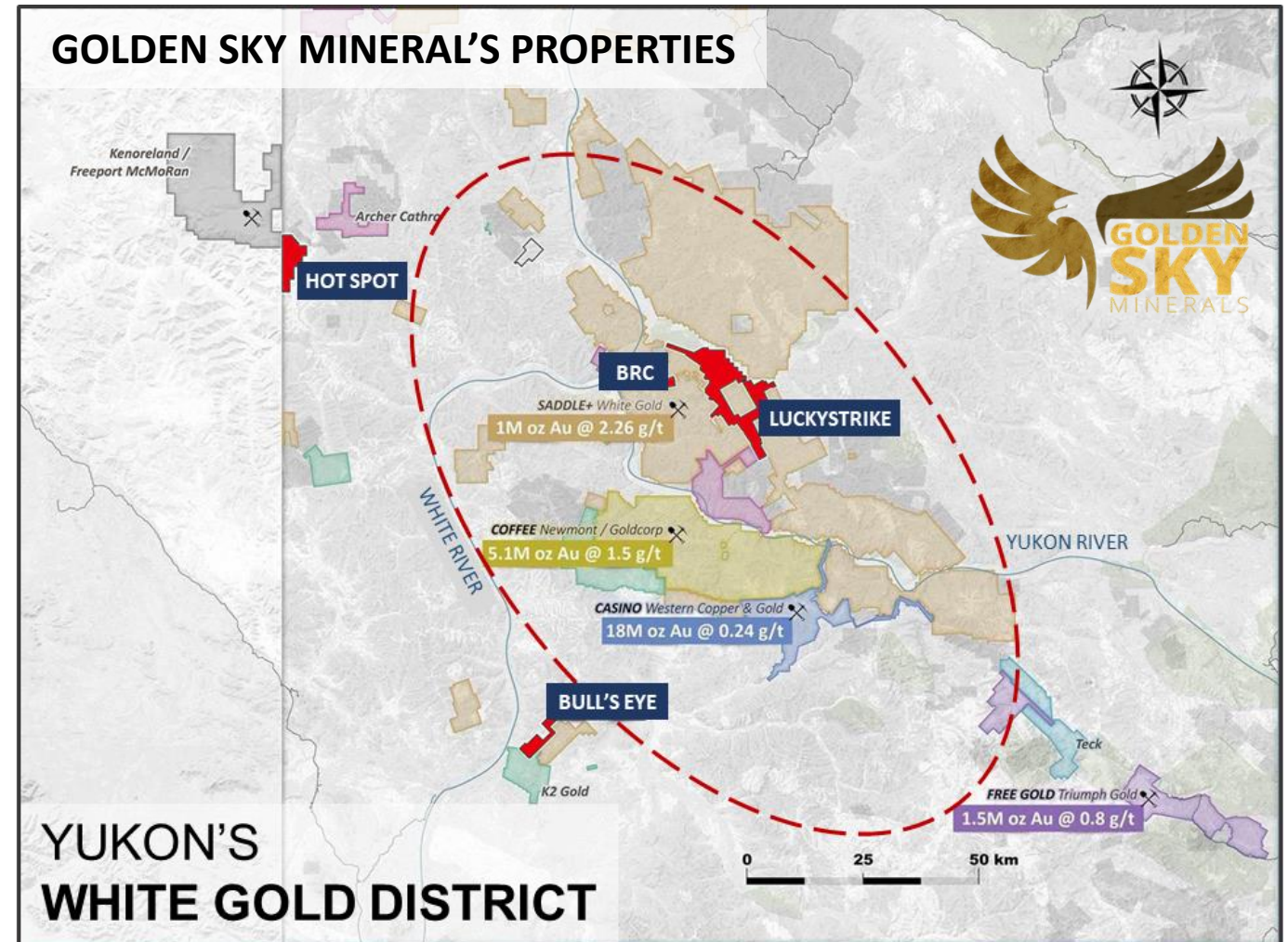


Strategic investments as a large shareholder of Golden Sky Minerals

- 3 significant gold projects in the White Gold District, Yukon Territory



- Large Shareholder of Golden Sky Minerals
 - Goldstrike Resources completed a spin-out of their White Gold District properties in 2018, forming a new public company called Golden Sky Minerals
- Golden Sky Minerals
 - Advancing their flagship, 100%-owned, 150 square km **Lucky Strike property** located in the heart of the Yukon's White Gold District
 - Additional assets include 2 new high-grade gold discoveries at their **Hot Spot** and **Bullseye properties**
 - High potential projects with strong near-term growth potential

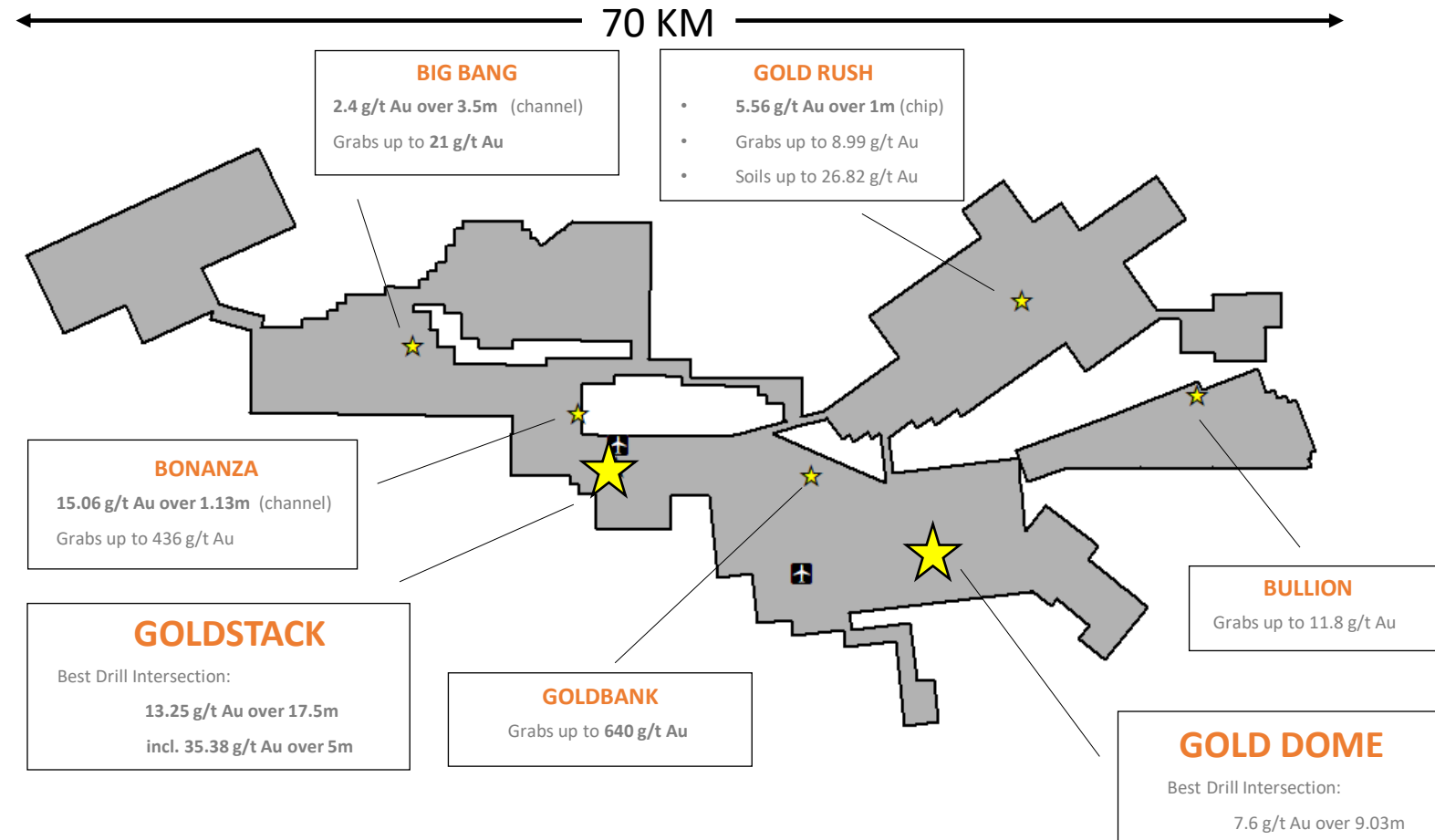
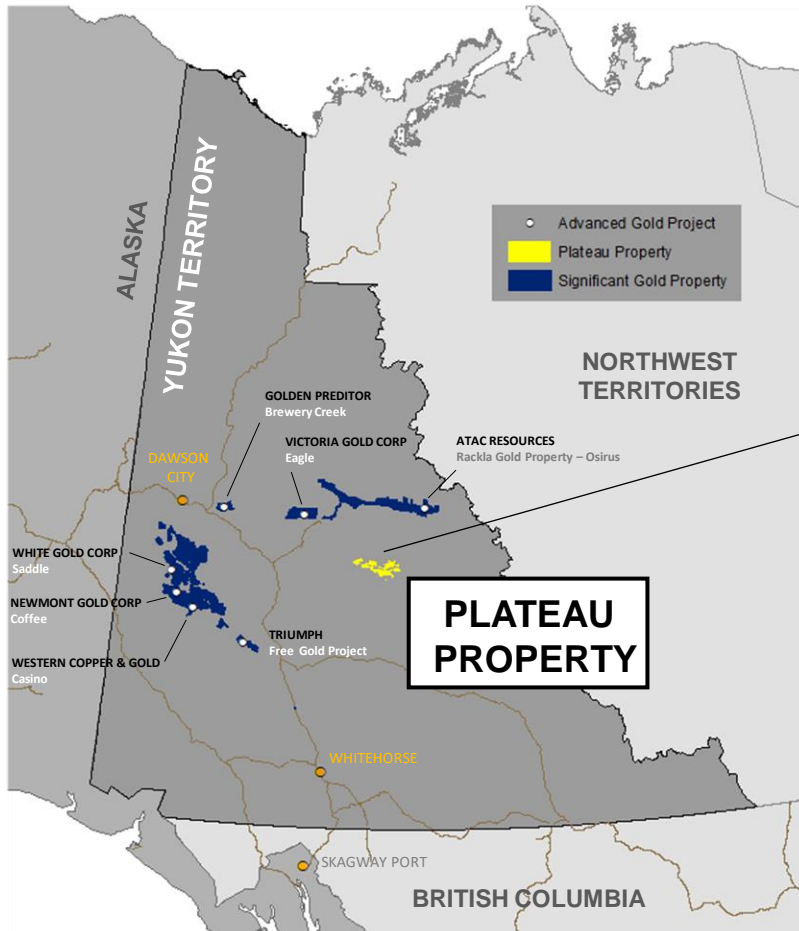




PLATEAU PROPERTY



Plateau Gold Project – A New district Scale High grade Gold System



2011

CONCEPTION TO DISCOVERY

- Target generation and claim staking
- Reconnaissance ridge and spur soil sampling and prospecting discovered anomalous gold at Gold Rush, Gold Dome and Goldstack zones

2013

DISCOVERY DRILLING

- Significant drill program (1183m)
- Goldstack - 2.28 g/t Au over 53 m incl. 10.91 g/t Au over 10m
- Gold Dome 7.60 g/t Au over 9.03m
- Construction of Spit Lake Camp (Float plane Dock)

2015

DISCOVERY DRILLING

- 2493m total
- Discovery of lower zone at Gold Dome - 12.65 g/t Au over 0.5m
- Goldstack - 13.25 g/t Au over 17.5 m (true width) incl. 35.28 g/t Au over 5.7m
- Geological mapping

2017 - 2019

NEWMONT JOINT VENTURE

- Construction of second camp at Goldstack Lake (float plane dock)
- 2973m drilled in 2017
- 7752m drilled in 2018
- Large geophysical surveys – airborne mag, SkyTEM, LiDAR
- Regional stream sediment surveys (BLEG)



2011

2020

2012

PROSPECTING

- Visible gold discovered at Gold Dome and Goldstack
- Goldbank trend discovered
- Additional staking (666 claims staked)
- Small drill program (376m)

2014

GEOPHYSICS

- 3D IP survey conducted at Gold Dome

2016

NEW ZONES

- Discovery of Bonanza, Big Bang, and Bullion gold zones extending mineralization to 50 km strike
- Additional 418 claims staked

GOLDSTACK DRILLING

- 1569m total
- 6.05 g/t Au over 45.5m

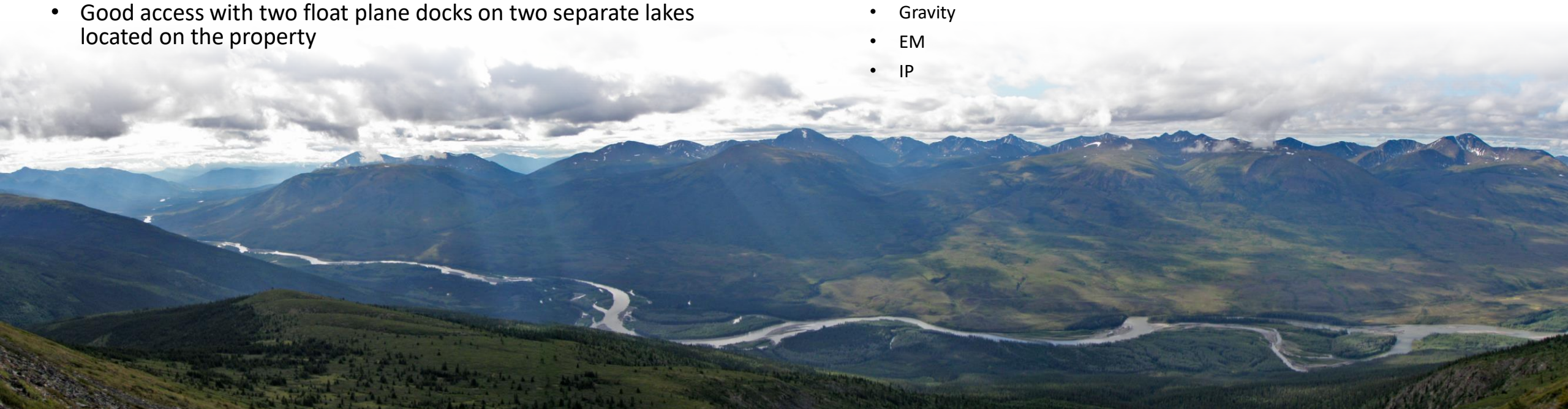
2020

RESTRUCTURING

- Appointment of new CEO, Daithi Mac Gearailt
- Share rollback to <10M shares fully diluted
- Assembly of geological team

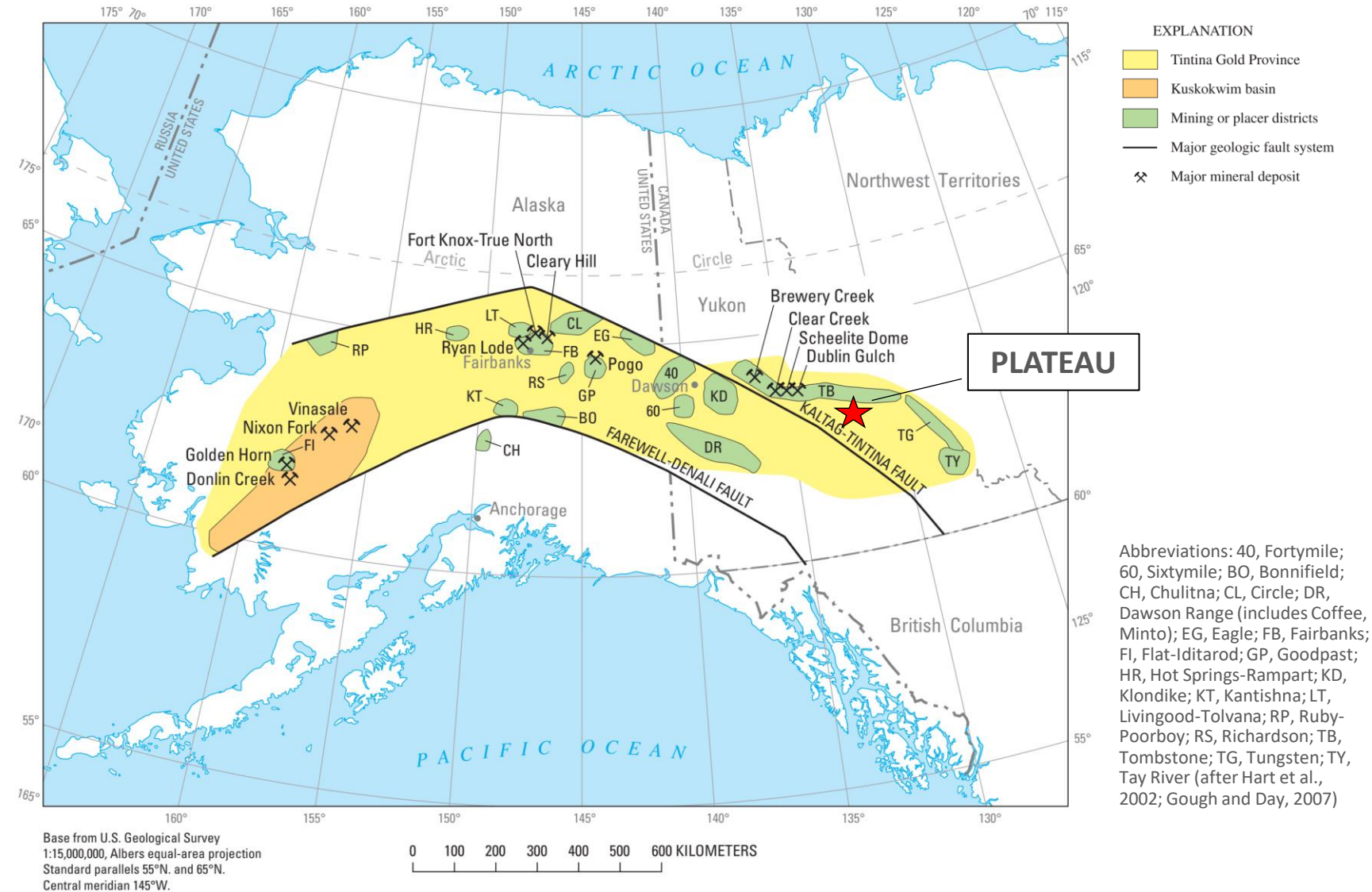
PROPERTY OVERVIEW

- Newly discovered, district-scale gold system in the Selwyn Basin, 120 km east of Mayo, YT.
- Staked in 2010 as a grassroots exploration program with no previous gold exploration recorded in the area.
- Property spans 70 km of strike covering 662 square kilometres
- Represents a 50 km trend of a high-grade gold discoveries
- 7 main zones discovered to date
- Wide spread coarse visible gold mineralization in hydrothermal quartz breccia and stockworks
- Good access with two float plane docks on two separate lakes located on the property
- Recent Joint Venture with Newmont Mining Corp (2017- 2019) resulted in a magnitude of data that is still currently being reviewed.
 - 10 726 meters of diamond drilling (49 holes)
 - Property-scale airborne geophysics surveys
 - EM (SkyTEM) survey
 - Magnetic
 - Radiometric
 - LiDAR
 - Proprietary regional stream geochemistry (BLEG)
 - Ground Geophysics at Goldbank and Goldstack
 - Gravity
 - EM
 - IP

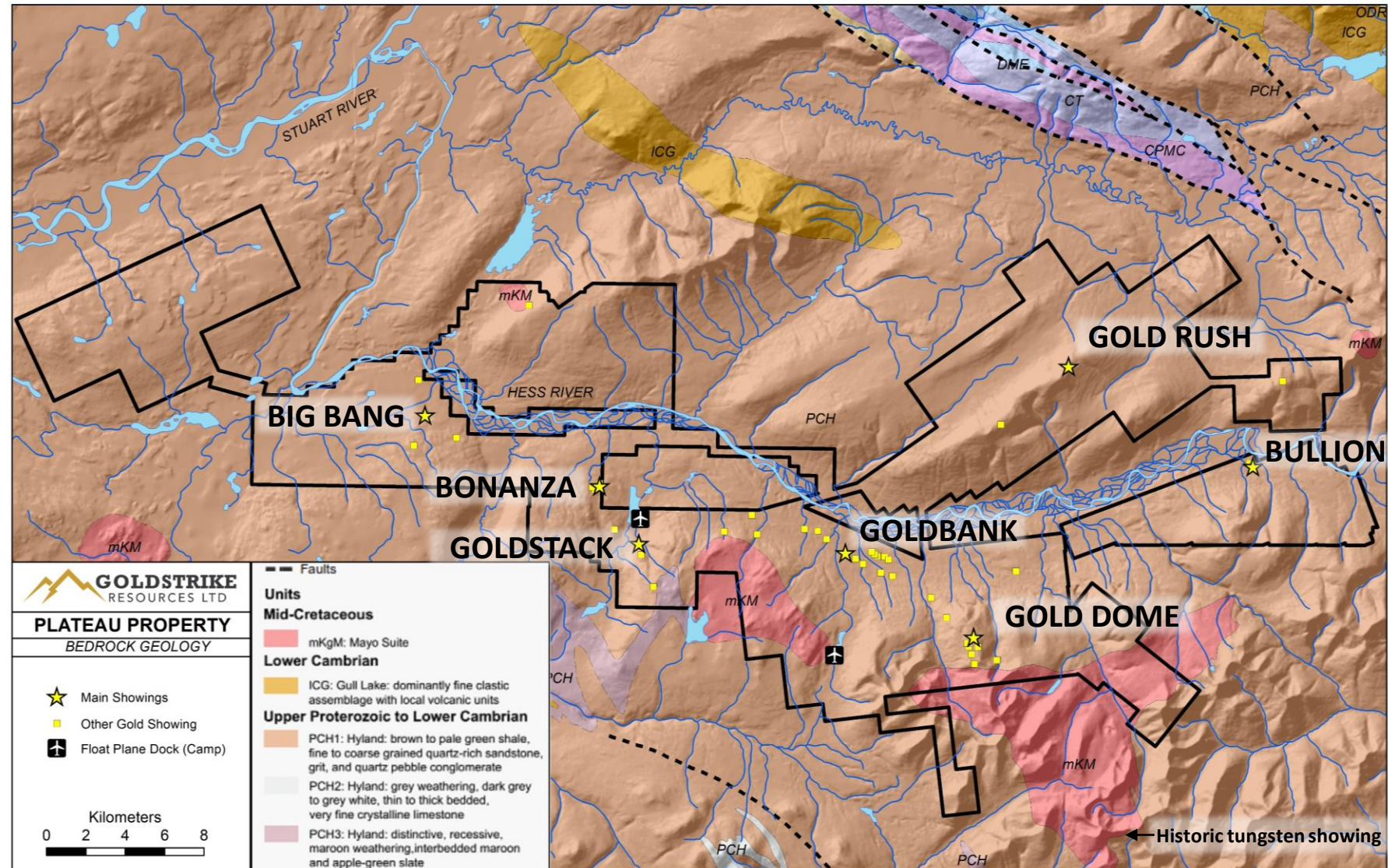


REGIONAL GEOLOGY

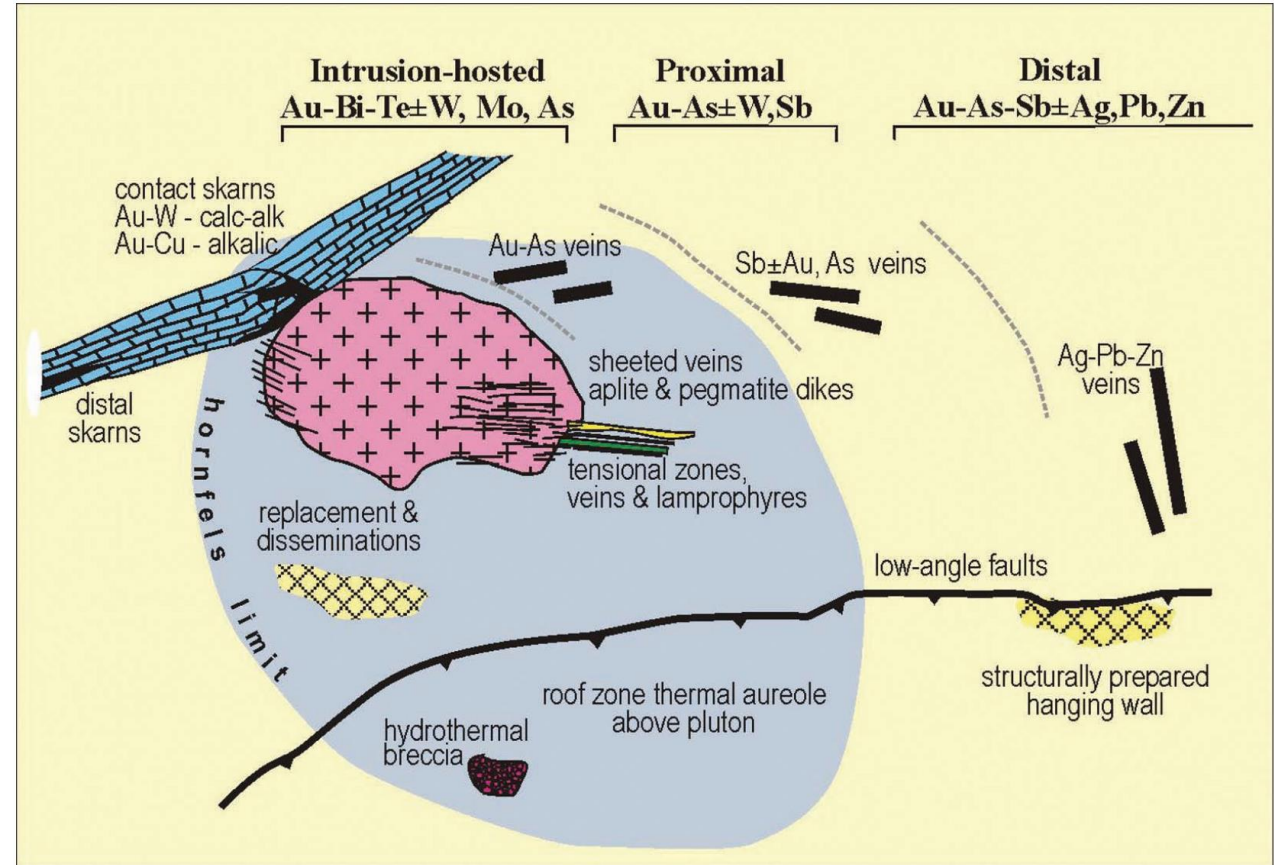
- Located in the Tintina Gold Belt which spans 2000 km across Alaska and the Yukon Territory. Over 50 million ounces of lode gold resources have been defined in the past 20 years.
- This belt includes both orogenic and intrusive-related gold deposits such as Fort Knox, Donlin Creek, Pogo, Brewery Creek, and Dublin Gulch.
- These deposits are typically hosted by both Cretaceous-aged granitic intrusions and the surrounding country rock.
- Gold mineralization at Plateau shares characteristics to both orogenic-type and intrusion-related gold systems.



- Plateau's gold mineralization occurs across 50 km of strike within extensive sequences of quartz stockwork and hydrothermal breccias
- Host rocks are Late Proterozoic sedimentary rocks of the Yusezyu Formation (580 Ma) that have been metamorphosed to greenschist facies and deformed by northeast-directed folding and thrust faulting
- Two granitic stocks of mid-Cretaceous age have intruded the Proterozoic rocks along the property's southern boundary
- Gold mineralization is associated with quartz veins developed in a late extensional environment with vein emplacement related to brittle complex fault sets associated with a northwest regional-scale fault system.
- There is a spatial and genetic relationship between the gold mineralization and the Mayo Intrusive suite



- Gold showings located near the intrusive bodies (Gold Dome & Goldstack) are associated with $\text{As} \pm \text{Sb}$ while gold showings further outward from the intrusive bodies (Bonanza & Goldbank) are typically associated with $\text{Pb-Zn} \pm \text{Sb, Te, Bi}$.
- This spatial and genetic relationship is characteristic of intrusive-related gold systems.
- Further to the model, a historic tungsten skarn showing is present on the southeastern edge of the Mount Armstrong Intrusion.



General plan model of intrusion-related gold systems in the Tintina Gold Province
(From Hart et al., 2002)



- Mineralized stockwork and hydrothermal breccia daylight at surface
- Best drill intercepts include
 - 13.25 g/t Au over 17.5 m (true width) incl.
 - 35.28 g/t Au over 5.7m

PSGS-15-01 (13.25 g/t Au over 17.5 m)

Mineralized stockwork and hydrothermal breccia with arsenopyrite and visible gold



PSGS-16-01 (6.05 g/t Au over 45.5m)

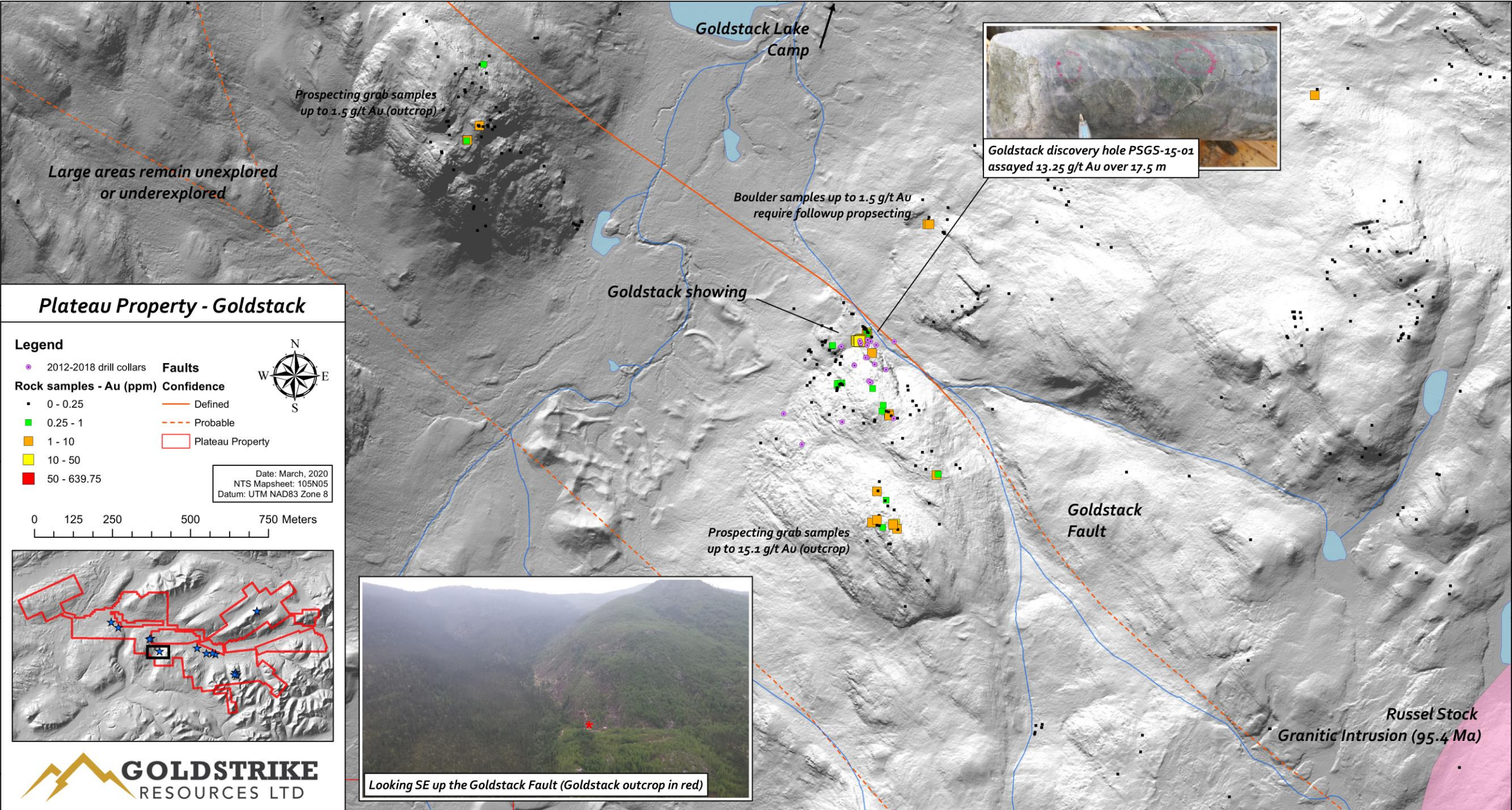
Visible gold in brecciated quartz vein



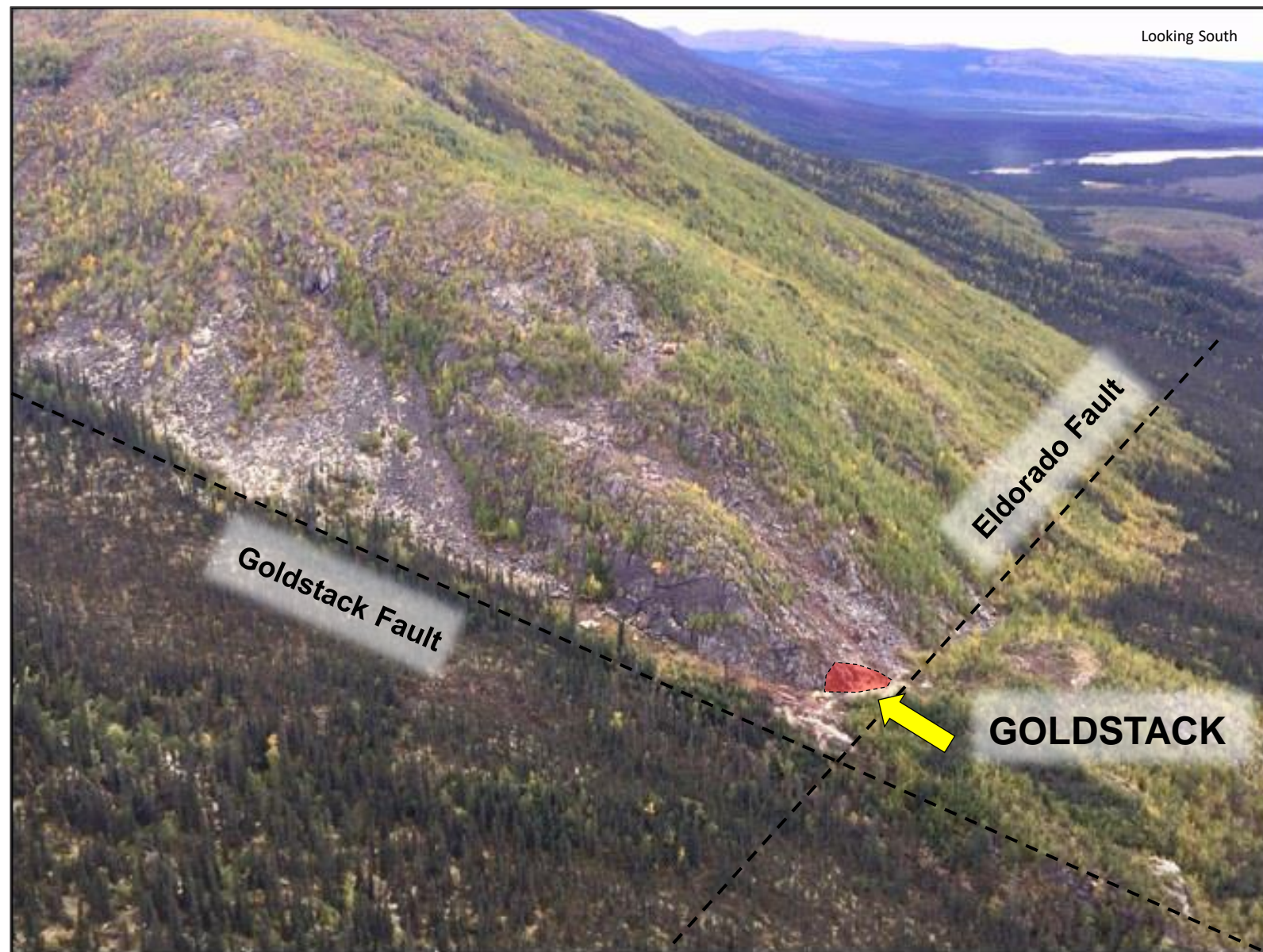
PSGS-15-02 (18.09 g/t Au over 4.0m)

Visible gold in brecciated quartz vein





- The Goldstack Zone is interpreted to be a recumbent fold at the intersection of two faults
- Gold mineralization is located within an arsenic-rich hydrothermal breccia and associated fine stockwork surrounding the breccia. This mineralization style is unique this zone.
- The zone daylights at surface (highlighted in red) in a 6m x 3m mineralized outcrop
- Drilling has defined a large, tabular mineralized body that is at least 150m long, between 4.5 – 17.5m thick, and at least 100m wide.
- A hole collared on the outcrop drilling SE down the hinge of the fold assayed 2.51 g/t Au over 66.0m
- The NW-trending Goldstack Fault represents the boundary between two structural domains. It has only been drilled once with the hole ending in the fault displaying anomalous gold mineralization
- A small IP survey conducted over Goldstack revealed the zone is strongly chargeable which present an excellent exploration tool for the area. No further IP has been done at Goldstack



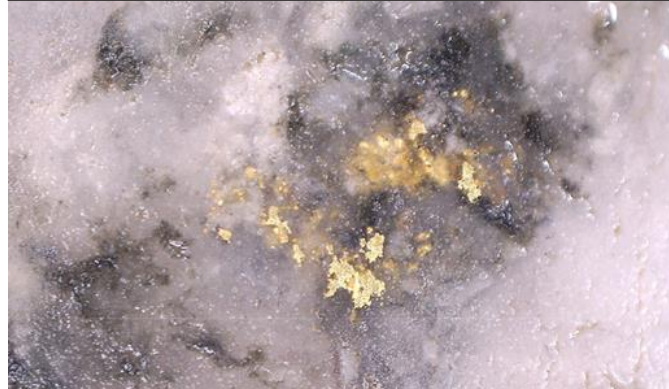


GOLD DOME

- Visible gold in felsenmeer over a 500 x 500 meter area
- 9 square kilometres of anomalous gold in soil and grabs
- Best drill intercept up to 7.6 g/t Au over 9.03m near surface
- Remains open to depth as a lower deep zone was discovered.
 - 12.65 g/t Au over 0.5m at 83.6m vertical depth
- Underexplored hornfels mineralization indicated by a large gold – arsenic soil anomaly situated near granite intrusive contact (1 km south of Gold Dome).
- Very little exploration completed within the intrusion.

PSVG-15-06 (12.65 g/t Au over 0.5m)

Visible gold intersected at 117 m at depth



PSVG-13-06

Quartz vein with arsenopyrite and visible gold



PSVG-15-08 (3.67 g/t Au over 1.0m)

18 meters of quartz stockwork with arsenopyrite and visible gold



- Gold Dome contains extensive quartz veining and stockwork throughout.
- Strong potential for additional discoveries
 - Gold mineralized outcrops have been sampled over a 1000 m vertical relief and are all hosted in the same sedimentary package

QUARTZ BOULDER FIELD

Massive quartz boulder field at Gold Dome



GOLD DOME

Ariel view looking south

Looking South



**GOLDBANK 2 kilometers,
1000m lower in elevation**



Gold Dome, looking NW towards Goldbank

Discovered in 2012, Gold Dome is 1.5 km x 1 km gold zone atop a flat-lying plateau. Multiple grab samples with visible gold lead to the discovery drill intercept of 7.6 g/t Au over 9.03m. Gold mineralization is found in quartz stockwork zones hosted by silicified sandstone and grit. Gold is closely associated with arsenopyrite, and to a lesser extent, pyrite and pyrrhotite. The main VG Zone is located 1.5 km north of the mid-Cretaceous Mount Armstrong Intrusion with a large Au-As soil anomaly located within the hornfels zone between.



VG in felsenmere grab samples
assay up to 317 g/t Au



Visible gold in PSVG-13-03
7.6 g/t Au over 9.03m (4.57 - 13.60m)



PSVG-15-06 discovered multiple deeper gold zones including visible gold at 83.6m vertical depth assaying 12.65 g/t Au over 0.5m.

Structurally-mapped area

Extent of 775 sample soil grid

VG in felsenmere grabs
assay up to 129 g/t Au

900m x 600m hornfels zone
of strongly anomalous
Au-As soil sampling

Strong potential for
hornfels mineralization

Untested Au-As soil anomaly
(up to 50 ppb Au, 232 ppm As)

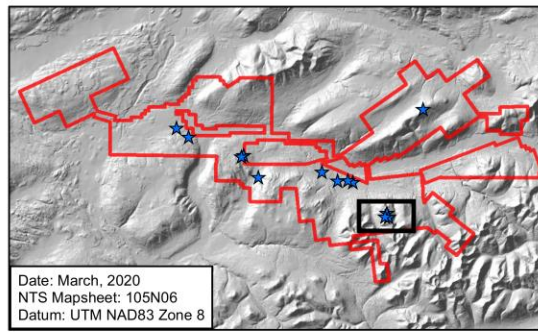
Mount Armstrong Intrusion (95.5 Ma)
Limited exploration done

Plateau Property - Gold Dome

Legend

- | | |
|-------------------------|-------------------|
| 2012-2018 drill collars | Faults |
| Rock samples - Au (ppm) | Confidence |
| 0 - 0.25 | Defined |
| 0.25 - 1 | Probable |
| 1 - 10 | Normal |
| 10 - 50 | Normal - probable |
| 50 - 639.75 | Thrust |
| Plateau Property | Thrust - probable |
| Au-As soil anomaly | |

0 0.25 0.5 1 Kilometers



Date: March, 2020
NTS Mapsheet: 105N06
Datum: UTM NAD83 Zone 8





GOLDBANK

- Mineralized vein systems spanning 11 km of strike
- Coarse arsenopyrite, galena and gold mineralization.
- Grabs grading up to 18.6 oz/t Au
- Visible gold on surface
- Limited exploratory drill holes over the trend with poor bedrock outcropping (<30%)
 - Strong potential to discover blind gold mineralization of economic concentrations

VG

51.6 g/t Au



VG

51.6 g/t Au



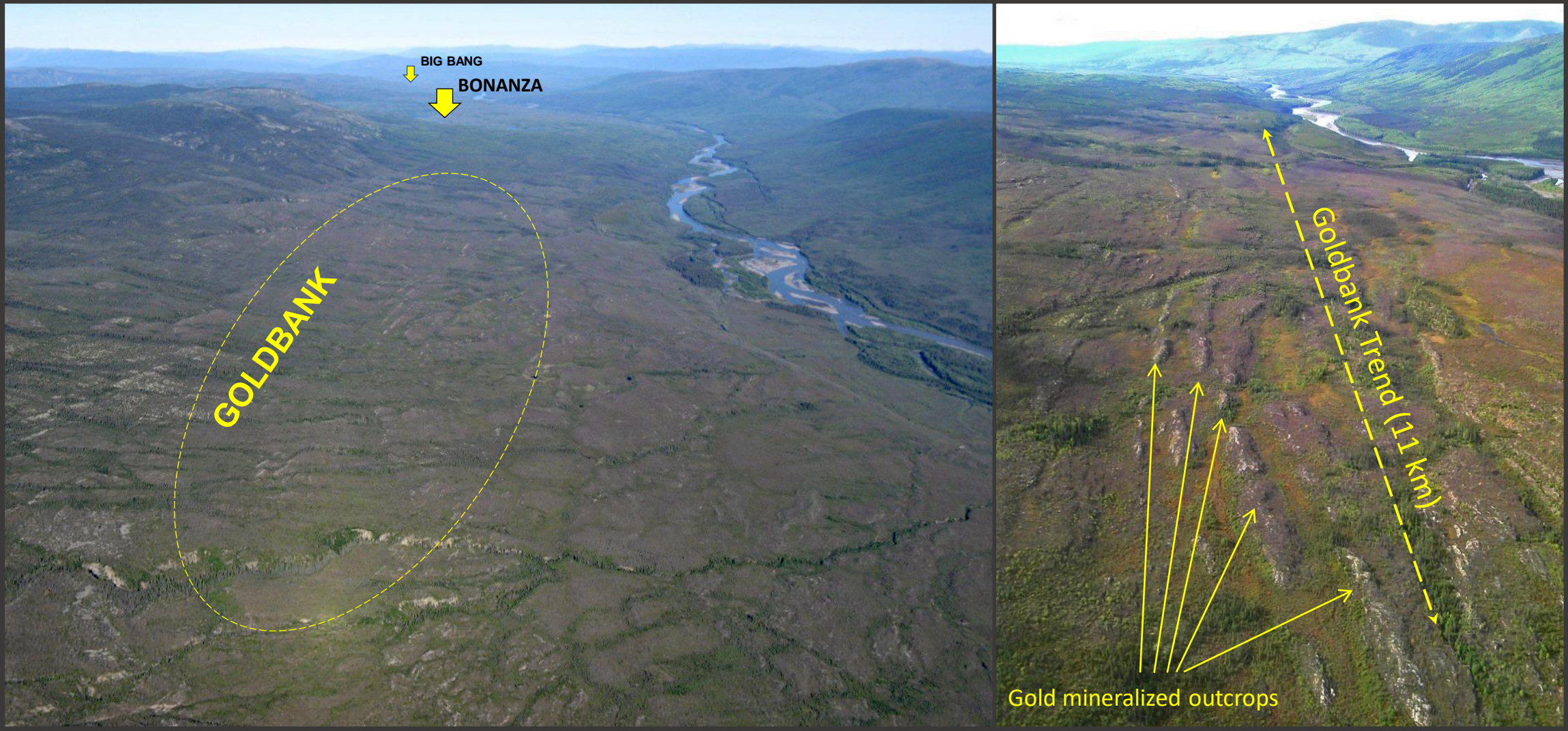
ARSENOPYRITE MINERALIZATION

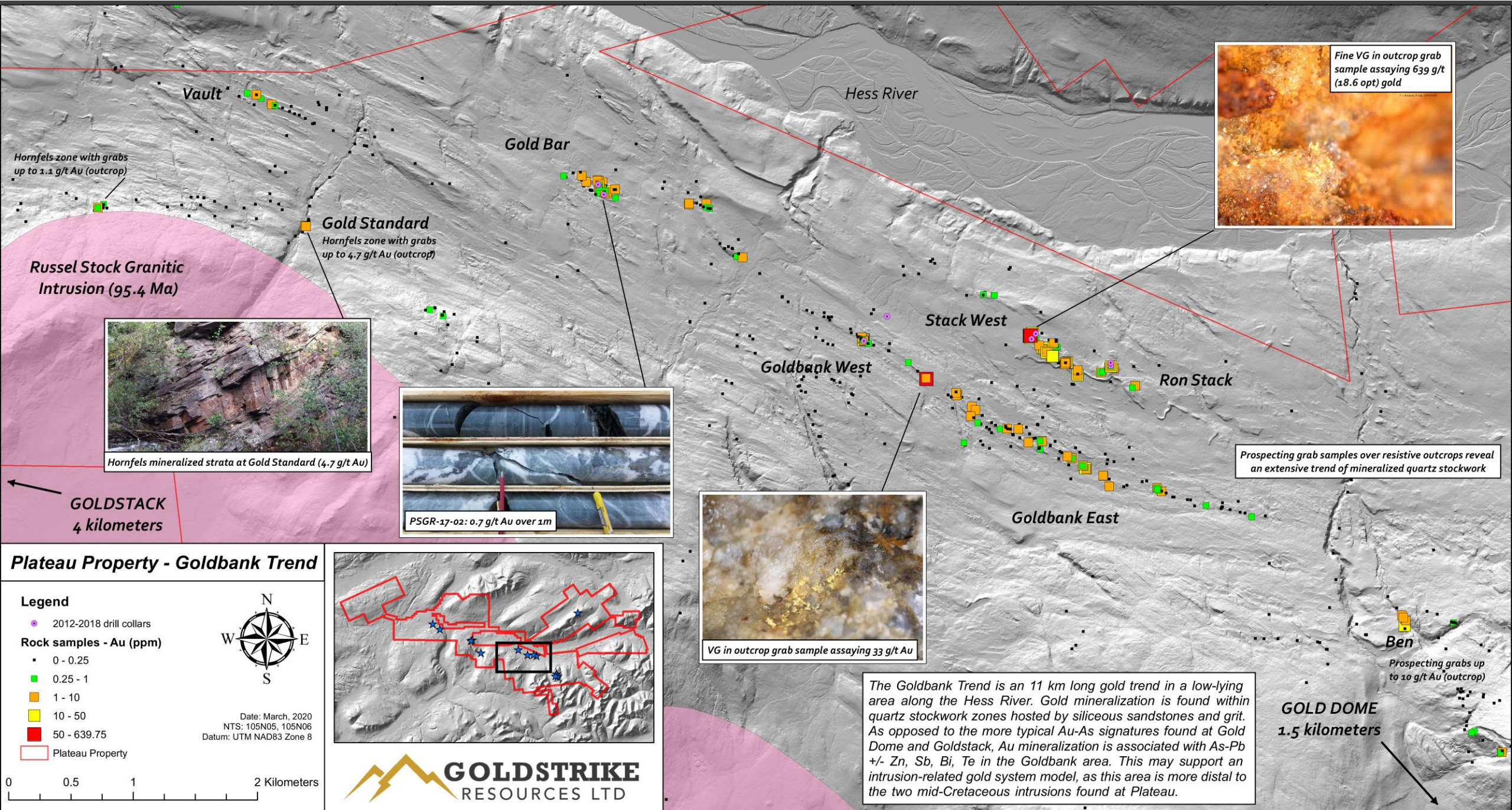
4 g/t Au



GOLDBANK TREND

11 kilometer trend of high grade gold mineralization in outcrop



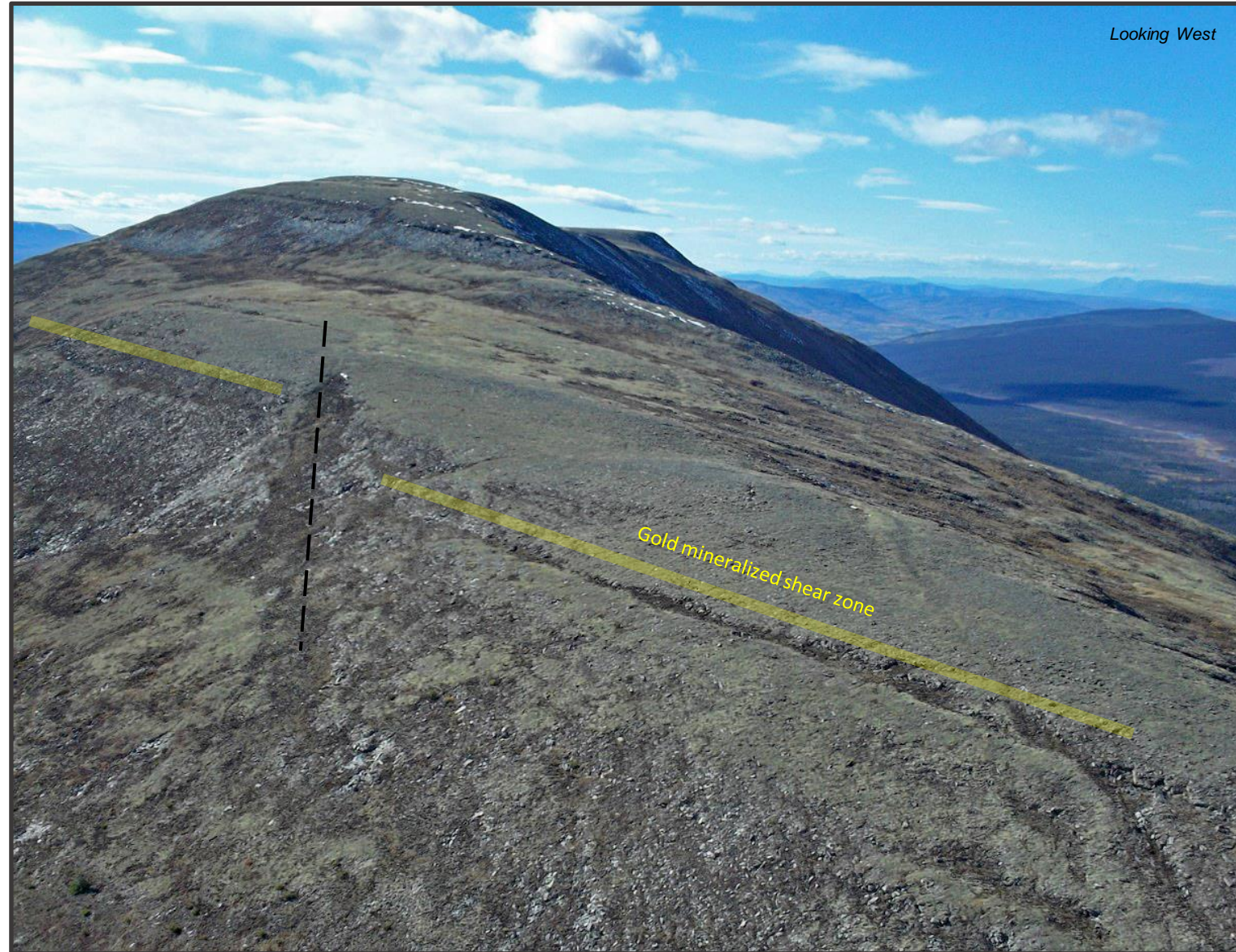




GOLD RUSH

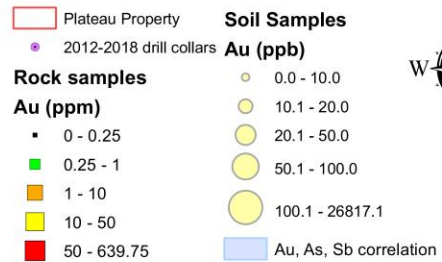
Located on the north side of the Hess River, the Gold Rush zone is unique to the rest of the Plateau property as it is lower in the Yusezyu stratigraphic sequence and within a different structural domain.

- Soil sampling more effective due to lack of glacial activity
- Multiple, large Au-As-Sb geochemical trends with values up to 26 g/t Au (in soil) that remain open to the northwest
 - Gold in soil trends along a mapped shear zone that cuts across the hillside
- Grab samples up to 9 g/t Au
- Multiple untested soil anomalies

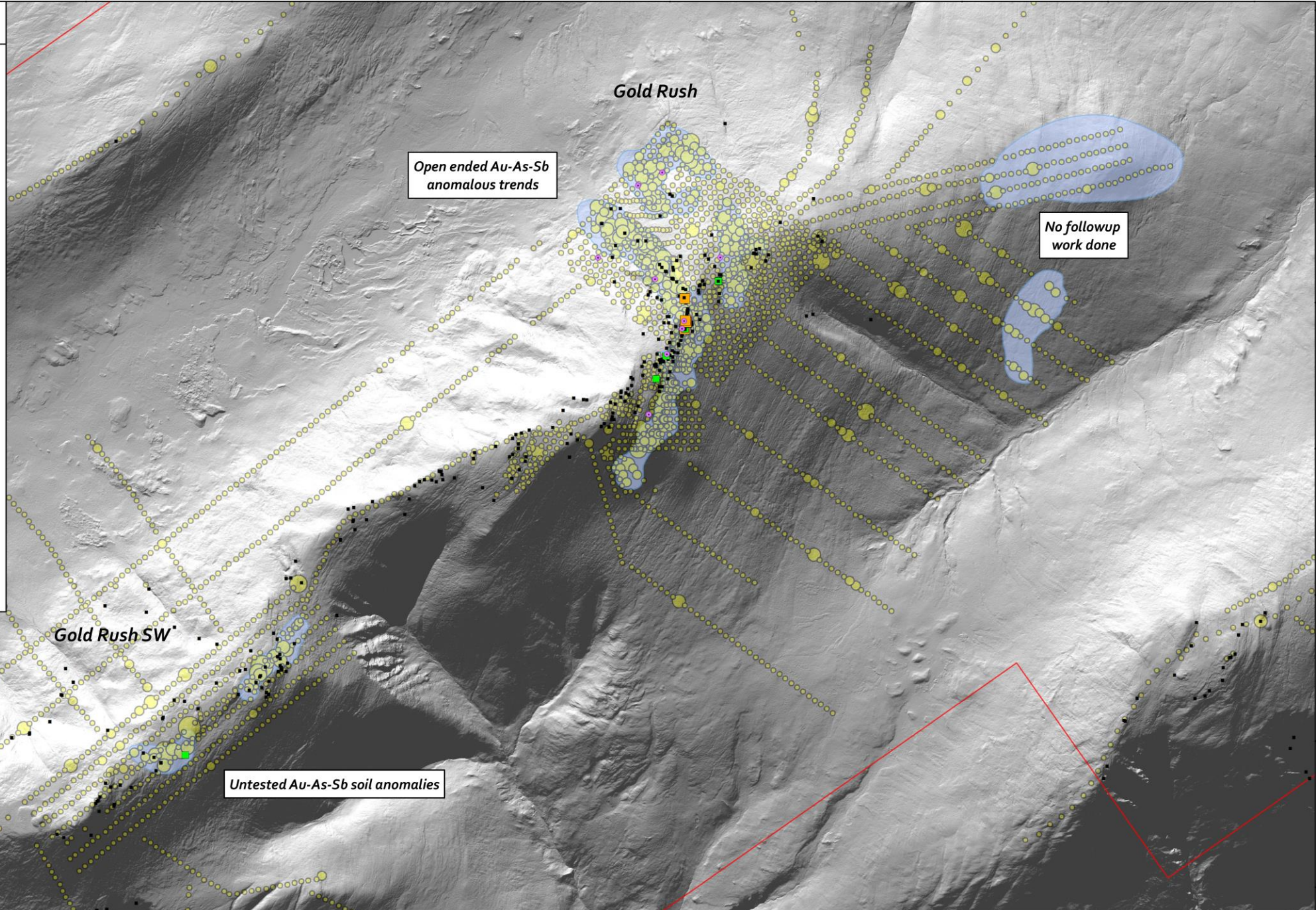
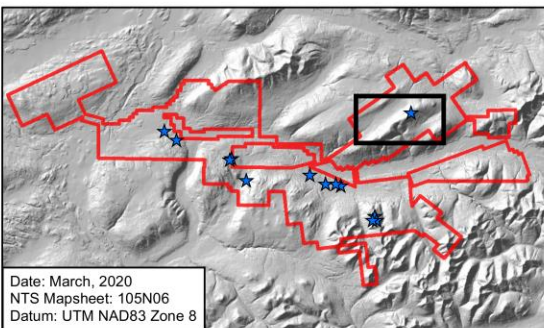


Plateau Property - Gold Rush

Legend



0 0.5 1 2 Kilometers





- Coarse Visible Gold in Bedrock
- Grabs up to 640 oz/ton Au
- Channel samples up to 15.06 g/t Au over 1.13m
- New stockwork zones found at depth in exploratory drilling (0.56 g/t Au over 2m at 87m downhole depth)
- Multiple untested soil anomalies and unfollowed up prospecting grab samples
- Strong potential for additional discoveries as outcrop is limited and masked by glacial overburden.

BONANZA SHOWING

Up to 640 Oz/ton Au



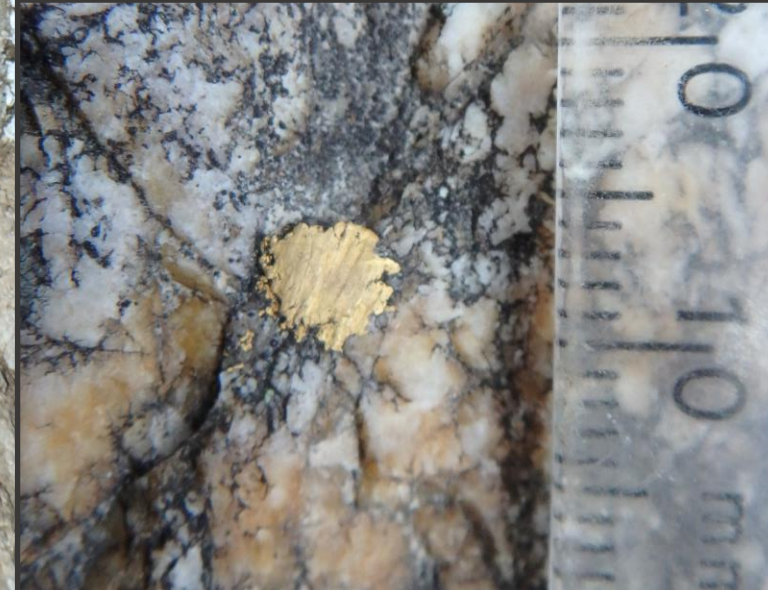
VG

Coarse visible gold



VG

Coarse visible gold scratched by glacial ice sheet





CHANEL SAMPLES
Up to 15.06 g/t Au over 1.13 m



BONANZA OUTCROP
Thick glacial overburden surrounds showing



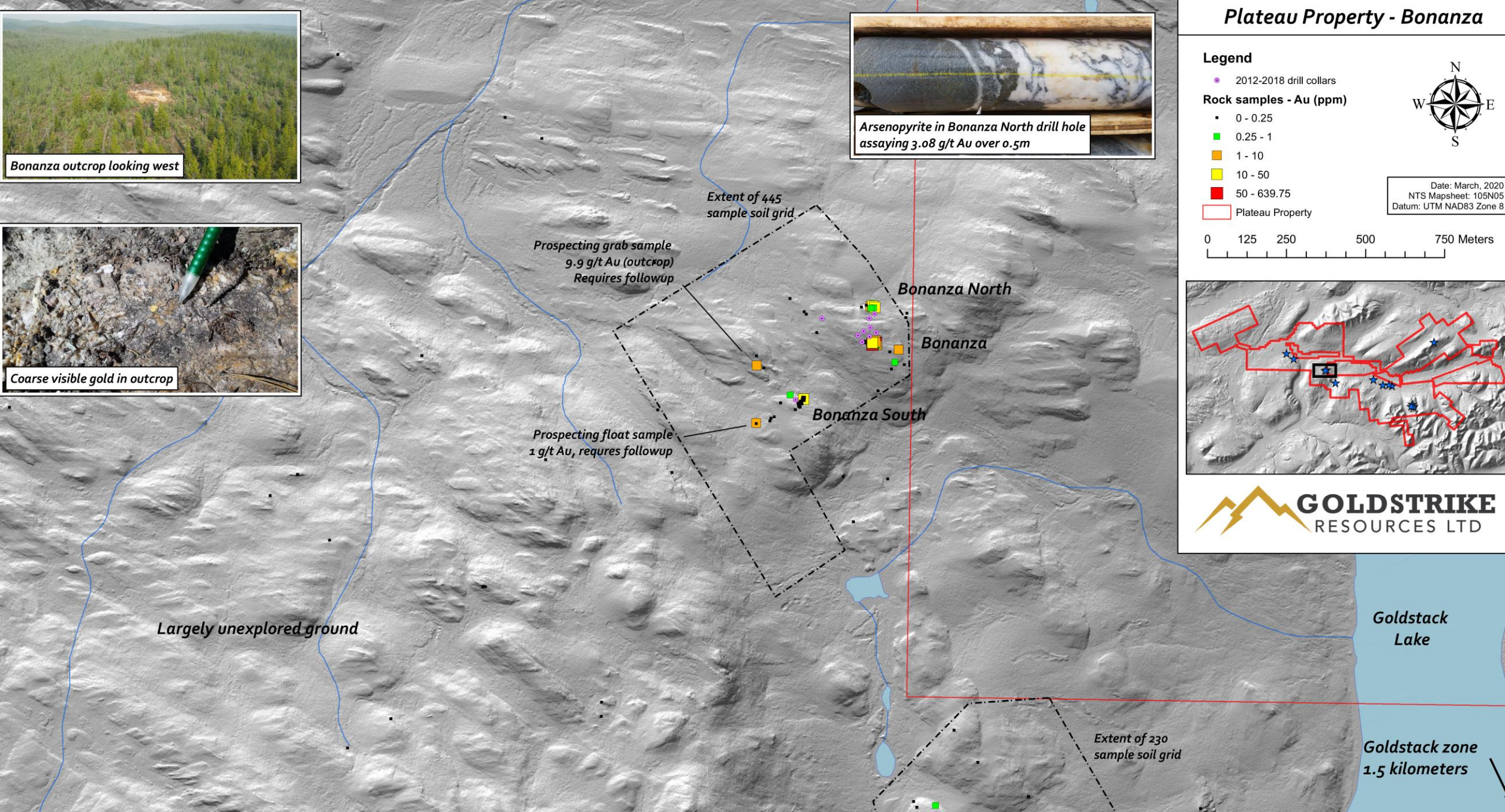
Bonanza outcrop looking west



Coarse visible gold in outcrop



Arsenopyrite in Bonanza North drill hole assaying 3.08 g/t Au over 0.5m



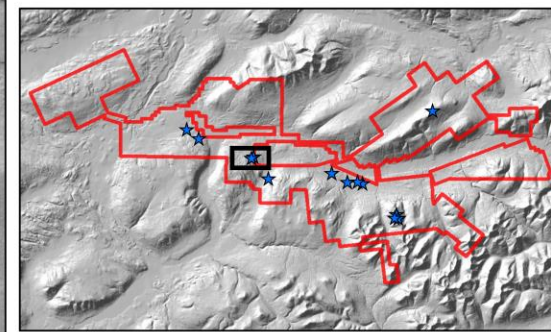
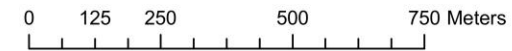
Plateau Property - Bonanza

Legend

- 2012-2018 drill collars
- Rock samples - Au (ppm)**
 - 0 - 0.25
 - 0.25 - 1
 - 1 - 10
 - 10 - 50
 - 50 - 639.75
- Plateau Property



Date: March, 2020
NTS Mapsheet: 105N05
Datum: UTM NAD83 Zone 8



- Extensive mineralized stockwork and breccia zone over an 8 square kilometer area
- Grabs up to 27.3 g/t Au
- Best channel results of 2.4 g/t Au over 3.5m
- 770 sample soil grid with multiple Au-As anomalies requiring follow-up
- Limited diamond drilling

QUARTZ VEINING

Intense silica flooding and quartz veining in outcrop



QUARTZ BRECCIA

Quartz breccia with arsenopyrite (up to 21 g/t Au)



QUARTZ STOCKWORK

Extensive quartz stockwork along face of outcrop wall



Plateau Property - Big Bang

Legend

2012-2018 drill collars

Rock samples

Au (ppm)

0 - 0.25

0.25 - 1

1 - 10

10 - 50

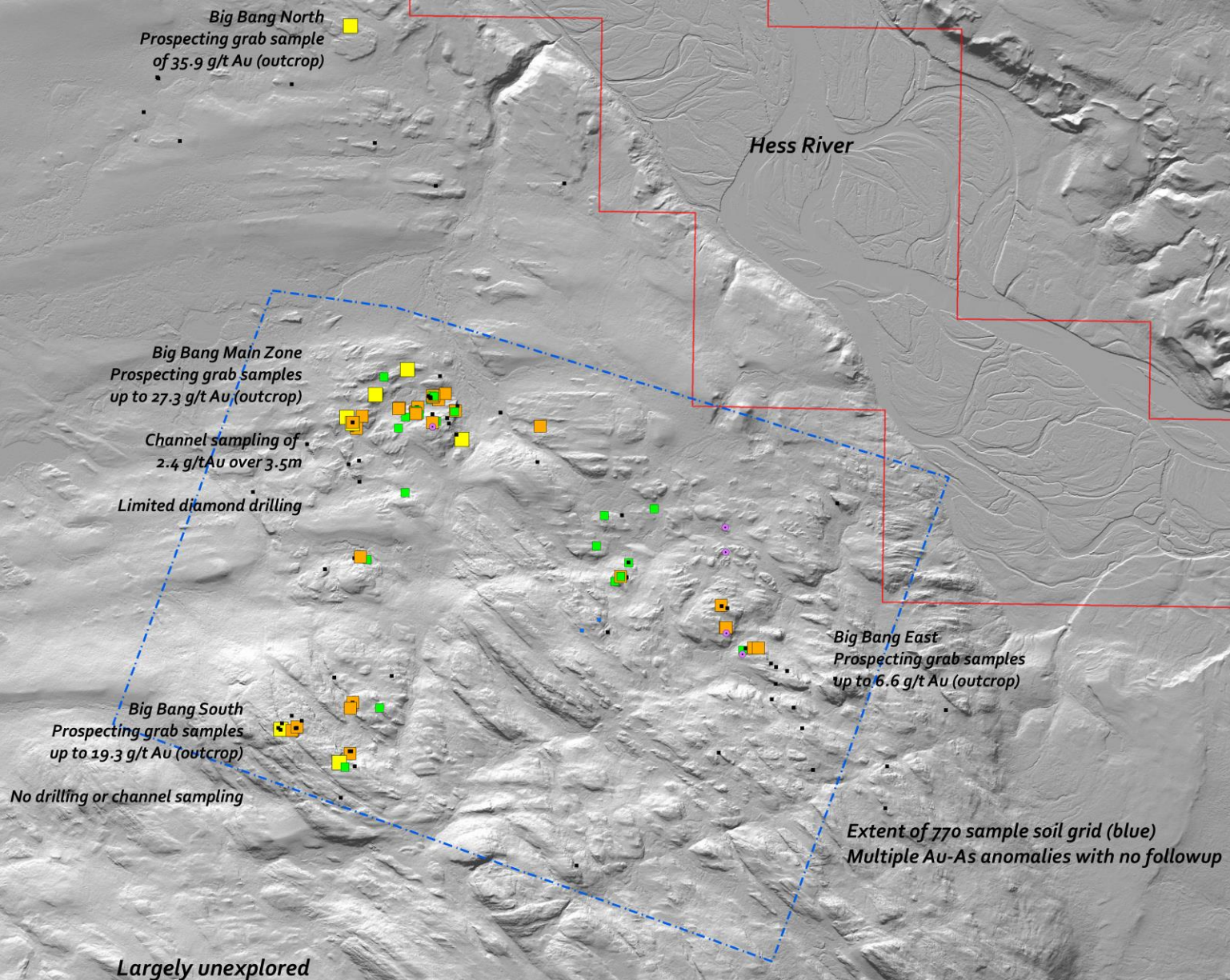
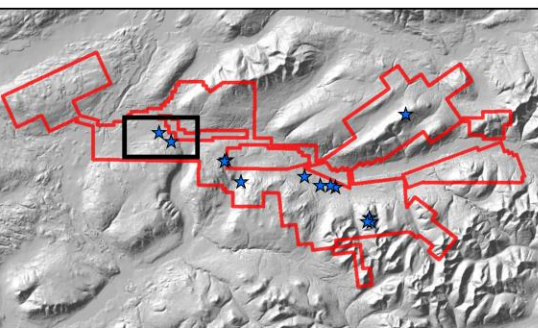
50 - 639.75

Plateau Property



Date: March, 2020
NTS Mapsheet: 105N05
Datum: UTM NAD83 Zone 8

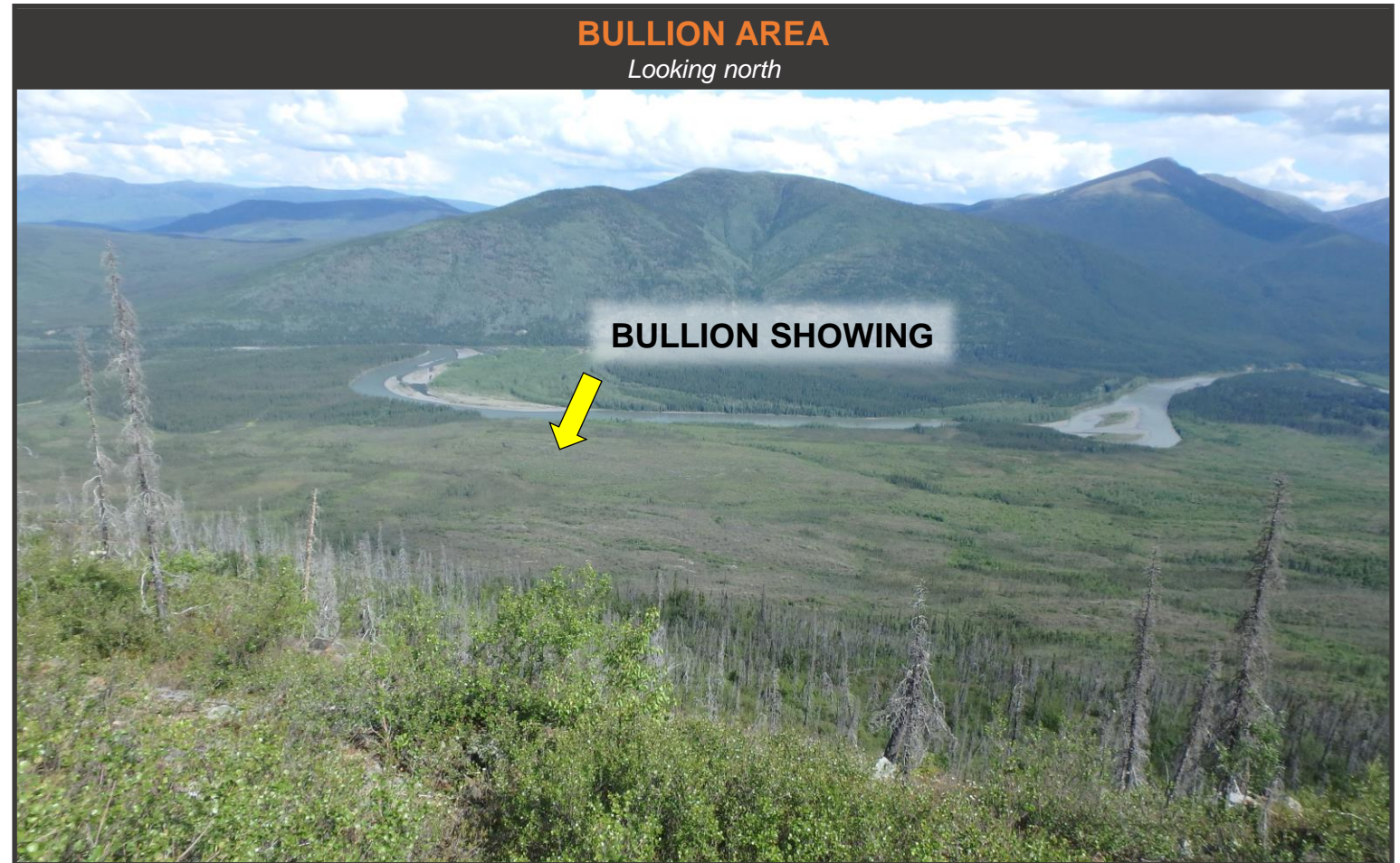
0 0.25 0.5 1 1.5 Kilometers



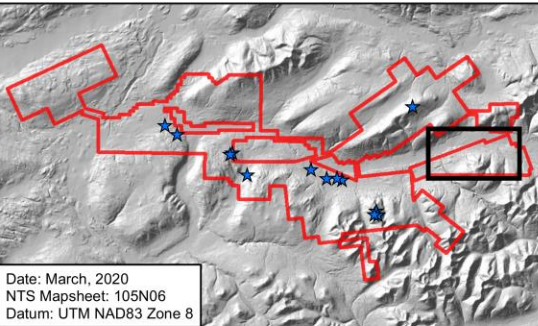
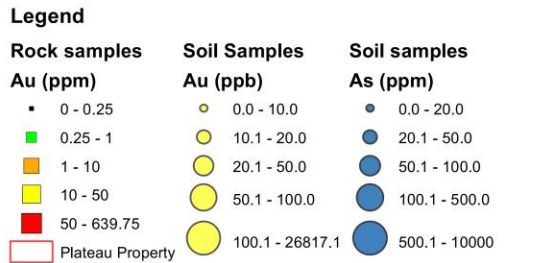
The Bullion zone represents the newest discovery on the property and demonstrates the pervasiveness of Plateau's district-scale gold system

- Prospecting grab samples up to 11.8 g/t Au
- 3 x 2 km arsenic anomaly defined by ridge and spur soil sampling
- Limited prospecting done
- No drilling or channel sampling

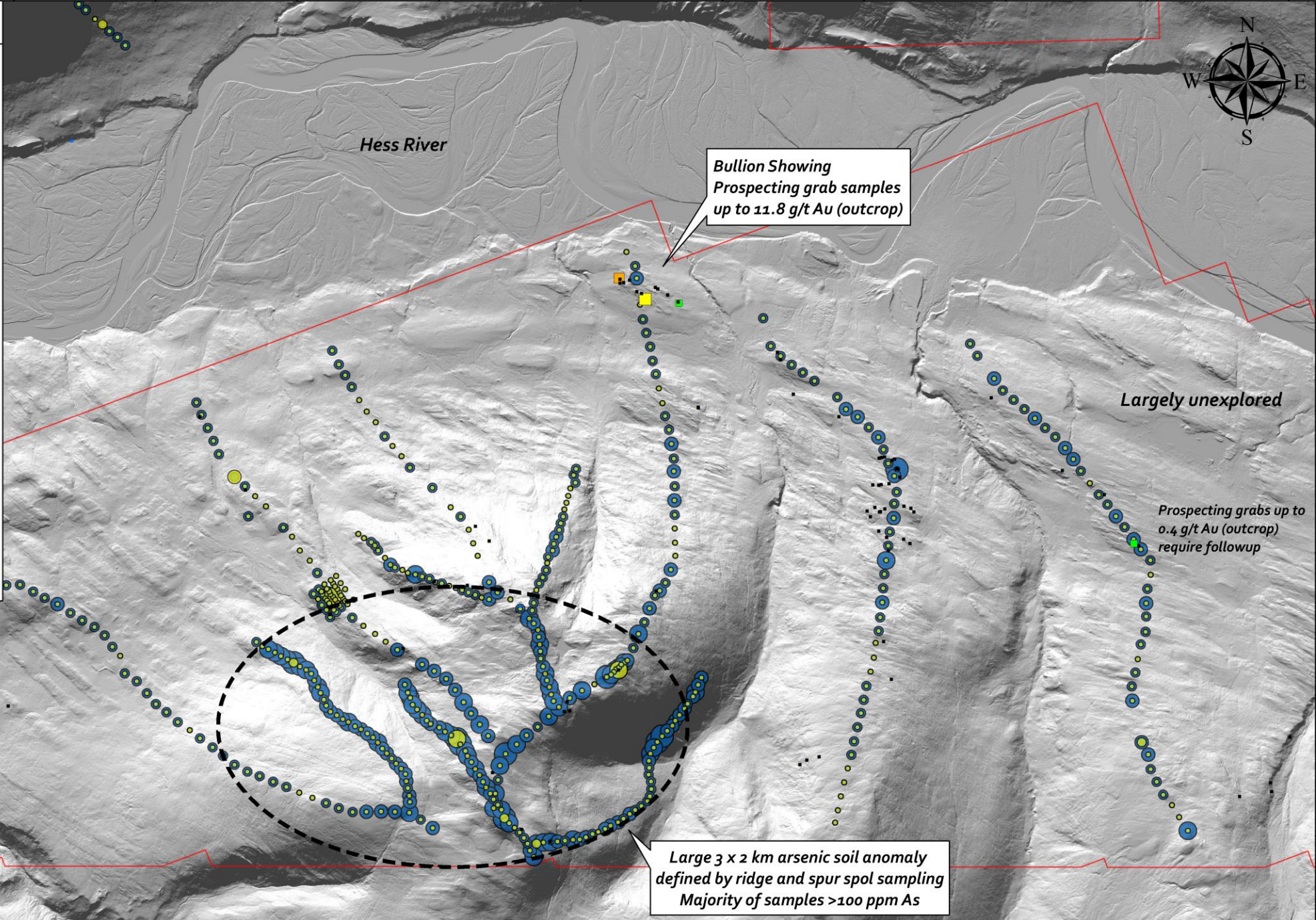
Additional exploration efforts along this newly recognized gold district will continue to return new discoveries over the years to come.



Plateau Property - Bullion



GOLDSTRIKE
RESOURCES LTD



Head Office

Goldstrike Resources Ltd.
Suite 1010-1130 West Pender St.
Vancouver, British Columbia
Canada V6E 4A4

Phone: (604) 681-1820

Email: info@goldstrikeresources.com

Website: goldstrikeresources.com

