

McMurdo

A HIGH-GRADE GOLD TARGET



GOLDSTRIKE
RESOURCES LTD



OVERVIEW

A MODERN EXPLORATION APPROACH FOR AN OLD DISCOVERY



Located in southern British Columbia, 30 km southwest of Golden, British Columbia



Road accessible via maintained active logging roads



An area with a rich history of discovery and small scale mining from the 1890's thru 1900's of high-grade gold veins and strata-bound polymetallic Pb-Zn-Ag replacement type mineralization



This is the first-time modern exploration methods have been employed to identify gold potential of the property



The 2020 property evaluation program expanded the zone of historic high-grade gold showings in an area with recent glacial retreat. Grab samples from pyritic quartz veins returned values **up to 5.13 oz/t gold (Au)**

LOCATION



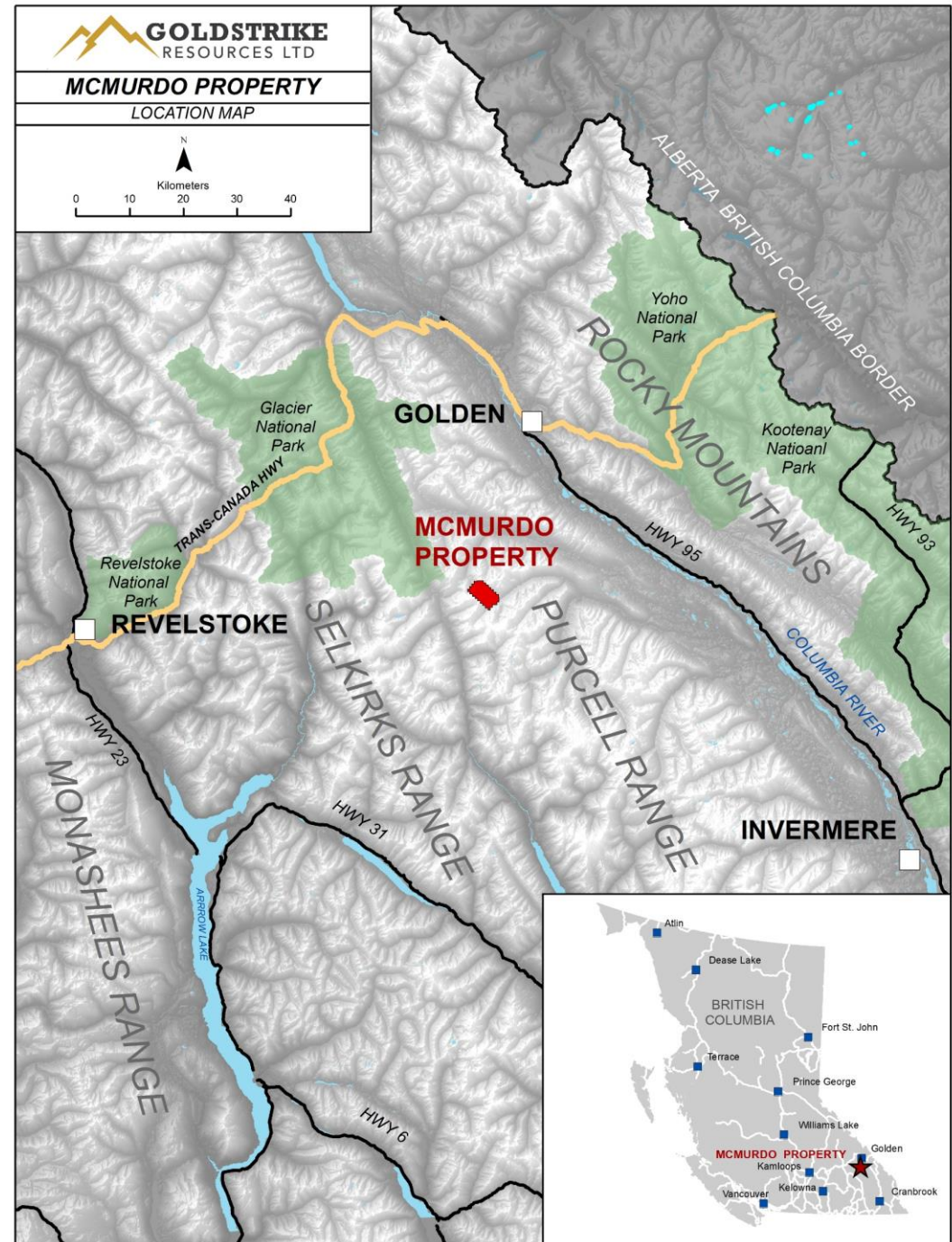
Located in the northern Purcell Mountains of southeastern British Columbia



30 km southeast of Golden, British Columbia



Great road access via active maintained logging roads



CLAIMS



The McMurdo property consists of a single mineral claim that covers 1,728 hectares and is 100%-owned by Goldstrike Resources with no underlying royalties or payments.



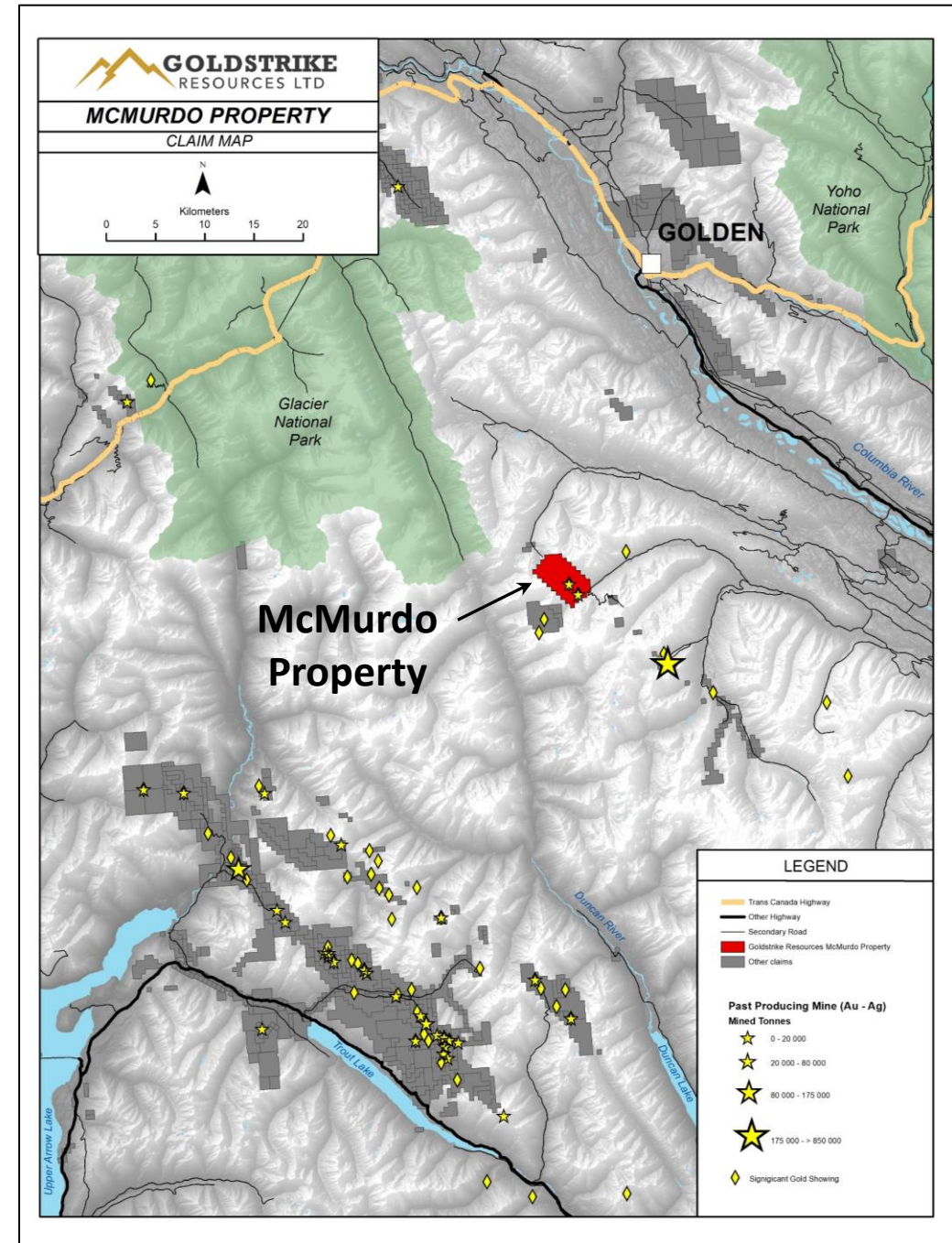
The claims cover the past producing Robert E. Burns gold mine and stamp mill that was built in 1892. Historic records show ore obtained from auriferous quartz veins averaged 25.7 grams per tonne.



The claim overlaps the Flying Dutchman mining lease that covers historic adits with quartz veins assaying up to 62 g/t Au over 0.5 m (not owned by Goldstrike Resources).



McMurdo is a regional grassroots exploration target, generated in house by Goldstrike's exploration team.



HISTORY

1890's – 1930's

EARLY PROSPECTORS

First gold discoveries were made in the early 1890's with a small stamp mill setup on Decision Creek to process gold ore obtained from quartz-sulphide veins from the Robert Burns and Dutchman mining leases. Around the same time, the Crown Point lead-zinc-silver replacement style mineralization was discovered on the property at the headwaters of McMurdo Creek. Periodic mining occurred until the 1940's with a total of 762 meters of underground workings.

1979 - 1983

FIRST NUCLEAR CORP SAMIM CANADA LTD

The area was regionally explored for lead – zinc SEDEX deposit over several years with a significant amount of geological, geochemical, geophysical surveys; followed by exploration drilling. Only a small portion of this work was completed on the McMurdo property. The limited sampling completed on the property shows anomalous gold and silver in carbonate rocks draining into Decision Creek.

2020

GOLDSTRIKE RESOURCES

Target Generation led to the staking of the McMurdo Property and the 2020 reconnaissance program that evaluated the property for its gold potential.

1890

2020

1966

WEST GATES MINES

First documented exploration program with a prospecting program designed to follow up on historical workings and confirm gold showings on the property.

1997

MOUNTAIN STAR RESOURCES

Completed a property examination for lead-zinc SEDEX deposit potential as well as its potential to host more extensive gold-quartz vein systems. Very limited field work was conducted on the property with no work being conducted on the McMurdo property.

2000 - 2019

LIMITED EXPLORATION

The ground was staked and held by various parties but no documented work was done on the McMurdo property.

DEPOSIT MODEL # 1

Gold Bearing Quartz Veins – Bulk Tonnage



High-grade gold veins have been mined on the property from the 1890's thru 1930's.



Although several prospectors and geologists have examined the numerous historical gold showings on the property; this is the first-time modern exploration methods have been used to identify the gold potential.



A low-grade bulk tonnage deposit model has not been applied to the property.



A property examination in 2020 showed that recent glacial retreat has uncovered widespread auriferous quartz veining indicating a bulk tonnage exploration target.

Looking East



Looking west



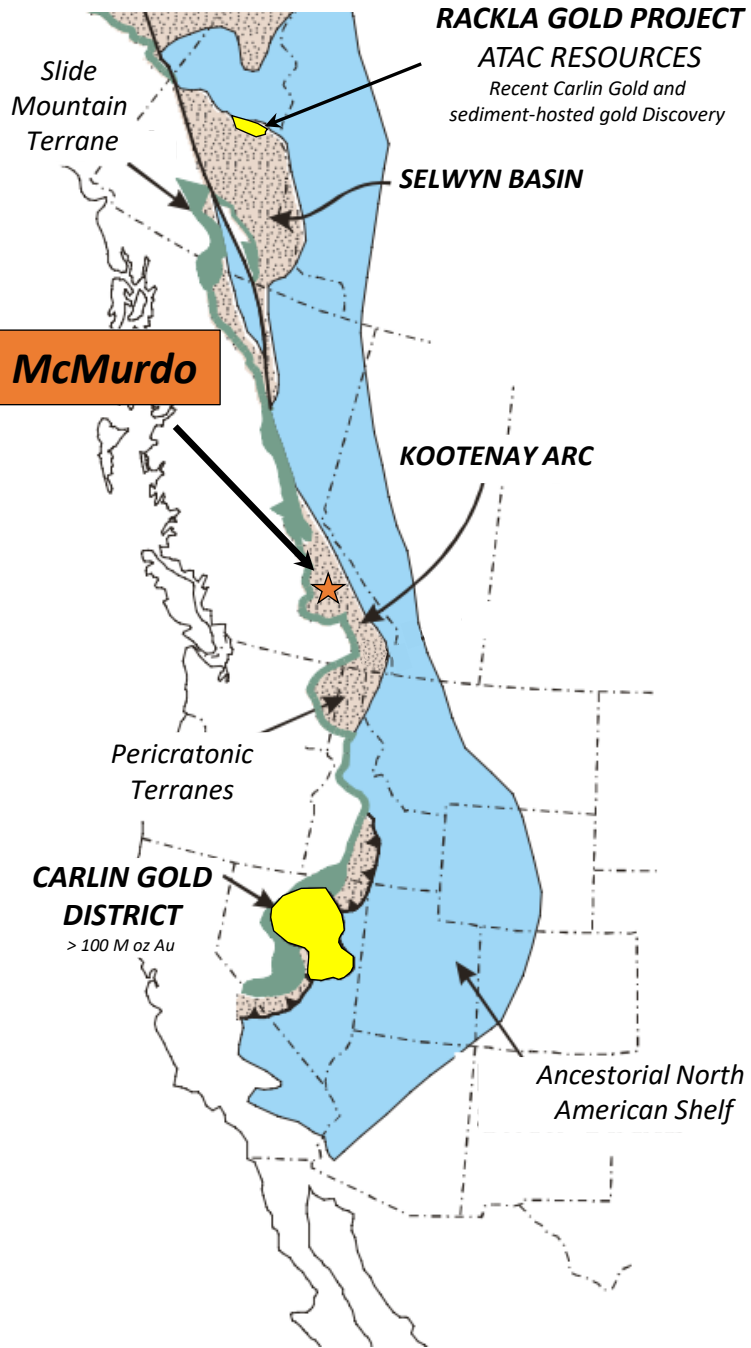
DEPOSIT MODEL # 2

SEDIMENT-HOSTED GOLD

The **McMurdo property** is located in the Kootenay arc, a sedimentary basin deposited along the Ancestral North American shelf and intruded by Mesozoic magmas. The property shares a **similar geological setting to that of other significant sediment hosted gold districts in North America** (Carlin, Nevada & Rackla, Yukon Territory).

Sampling during the early 1980's for strata-bound Pb-Zn SEDEX deposits discovered anomalous Au and Ag in carbonate units that contained no visible sulphides. These samples assayed up to 2.5 g/t Au and 1808 g/t Ag.

Gold potential was overlooked during Pb-Zn SEDEX exploration programs in the early 1980's with limited geochemical analyses being conducted for the precious metal. Sediment-hosted mineralization is often microscopic and is easily overlooked.



GEOLOGY / MINERALIZATION



Located at the continental margin of Ancestral North America and made up of the Purcell Mountain range that parallels the west side of the rocky mountain trench.



Underlain by a thick sequence of Proterozoic marine sedimentary rocks exposed in the core of the northwest trending Purcell Anticlinorium and intruded by Mesozoic intrusives at its western boundary.



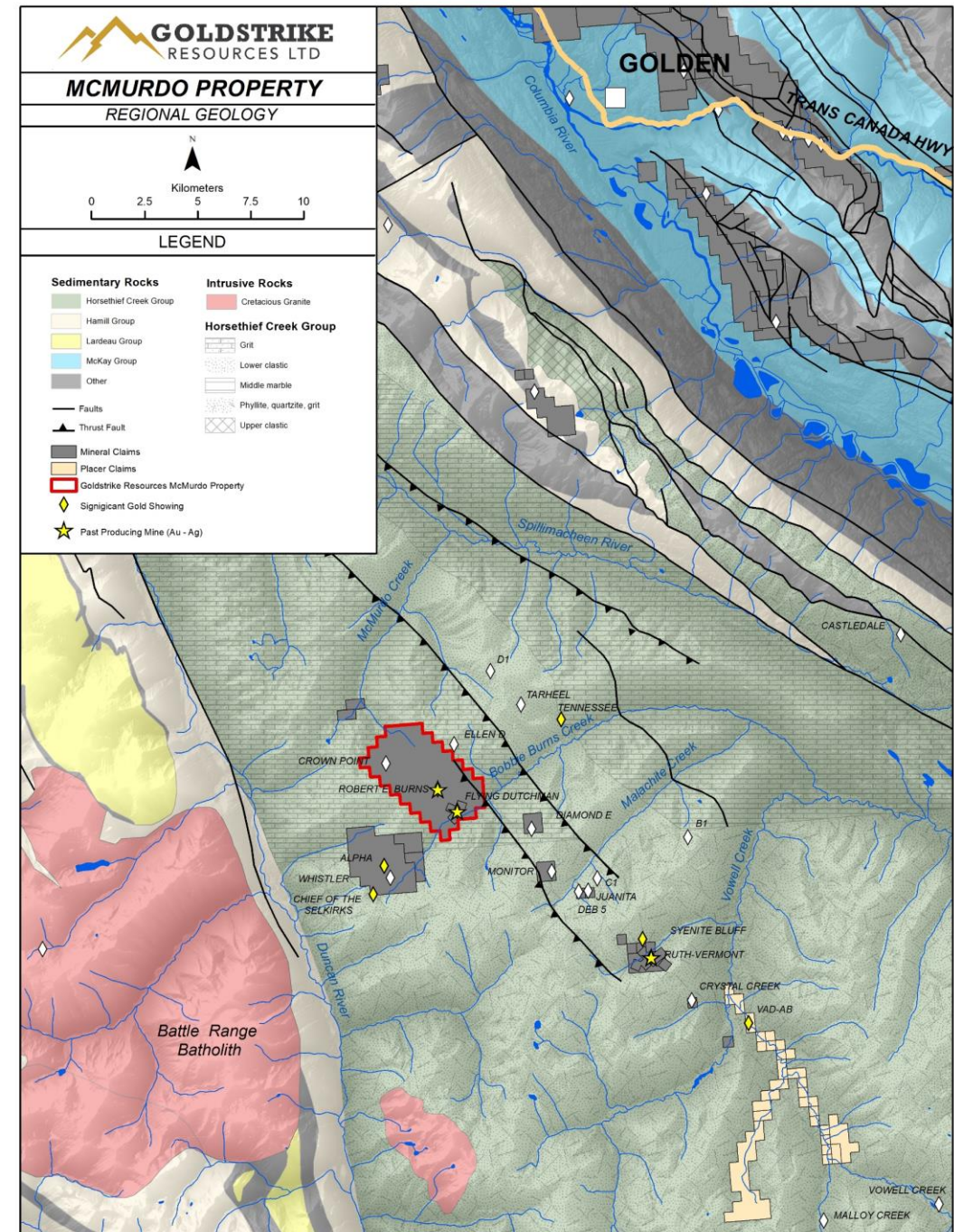
This anticline is deformed by a complex series of thrust faults and folds running parallel to the anticlinal axis (northwest-southeast).



Narrow discontinuous northwest-southeast striking quartz veins are primarily confined to the coarser textured grits and quartzites. These veins locally host gold mineralization with disseminated pyrite.



Lead-Zinc-Silver mineralization is confined to fine-grained stratigraphy; including the limestones, dolostones, and shales.



2020 PROPERTY EVALUATION



The evaluation program was designed to confirm the presence and grades of historic gold bearing quartz-sulphide veins and to evaluate the vein density for a potential bulk tonnage model.



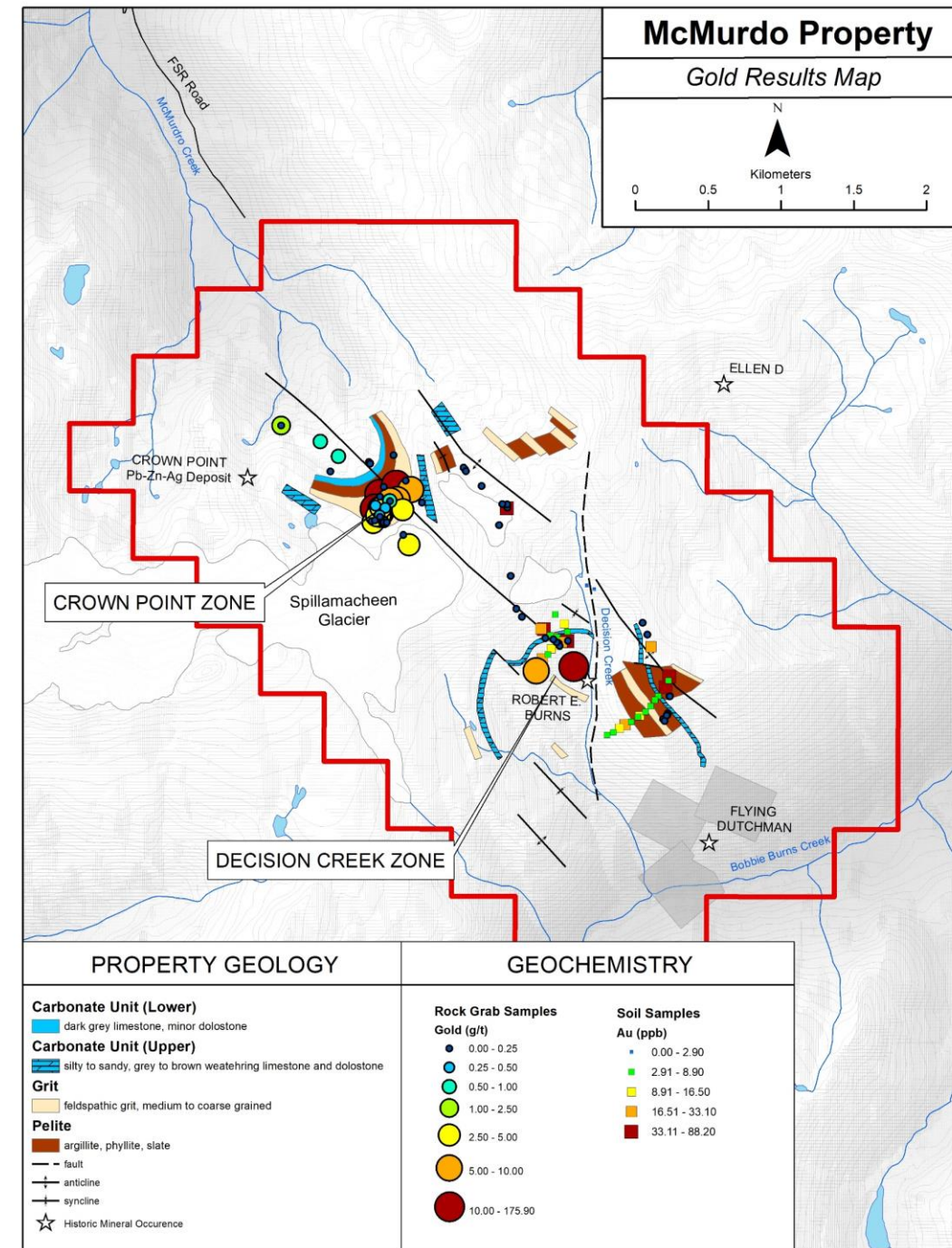
A total of 33 soil and 74 rock grab samples were acquired for geochemical analysis.



The program was successful in expanding historical gold showings 600 m further uphill in an area with recent glacial ice retreat. This new zone, coined “Crown Point” is a 400 X 300-meter area containing auriferous quartz veins hosted in a micaceous grit unit within the anticlinal hinge of a regional fold. The quartz veins range from a few centimetres to 3 m wide and contain pyrite mineralization irregularly disseminated throughout; with select grab samples from the veins running up to 175.9 g/t (5.13 oz/t) Au. The veins are steeply dipping and predominantly strike northwest, parallel to the axial plane of the anticline.



Approximately ~1.7 km southeast of the Crown Point zone is the Burns showings, where rock samples collected from historic trenches assayed up to 76 g/t (2.22 oz/ton). The Burns showings are located along the same regional-scale antiform structure as the newly discovered Crown Point zone.



Looking west

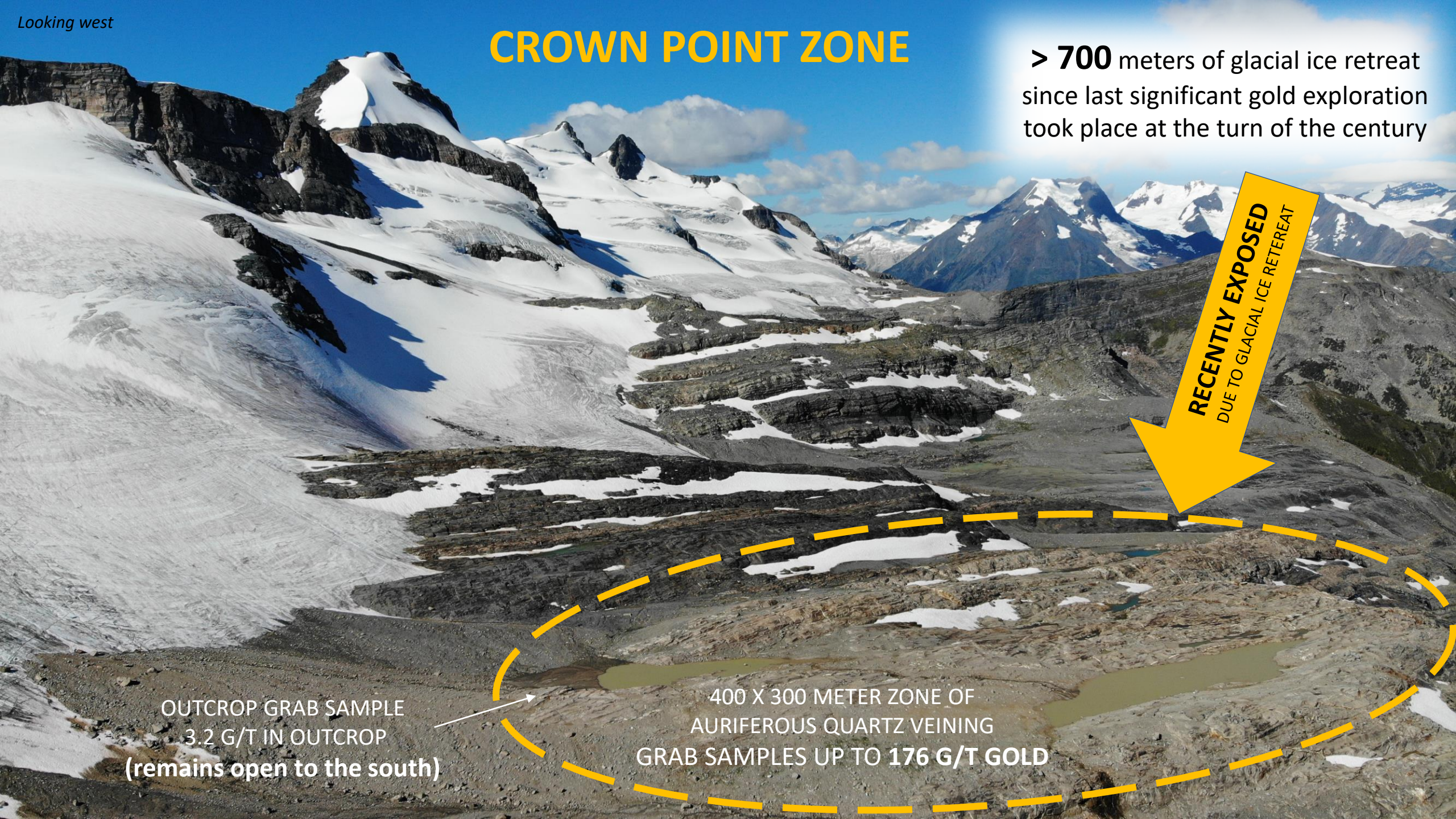
CROWN POINT ZONE

> 700 meters of glacial ice retreat since last significant gold exploration took place at the turn of the century

RECENTLY EXPOSED
DUE TO GLACIAL ICE RETREAT

OUTCROP GRAB SAMPLE
3.2 G/T IN OUTCROP
(remains open to the south)

400 X 300 METER ZONE OF
AURIFEROUS QUARTZ VEINING
GRAB SAMPLES UP TO 176 G/T GOLD



Looking South

A CENTURY OF GLACIAL ICE MELT

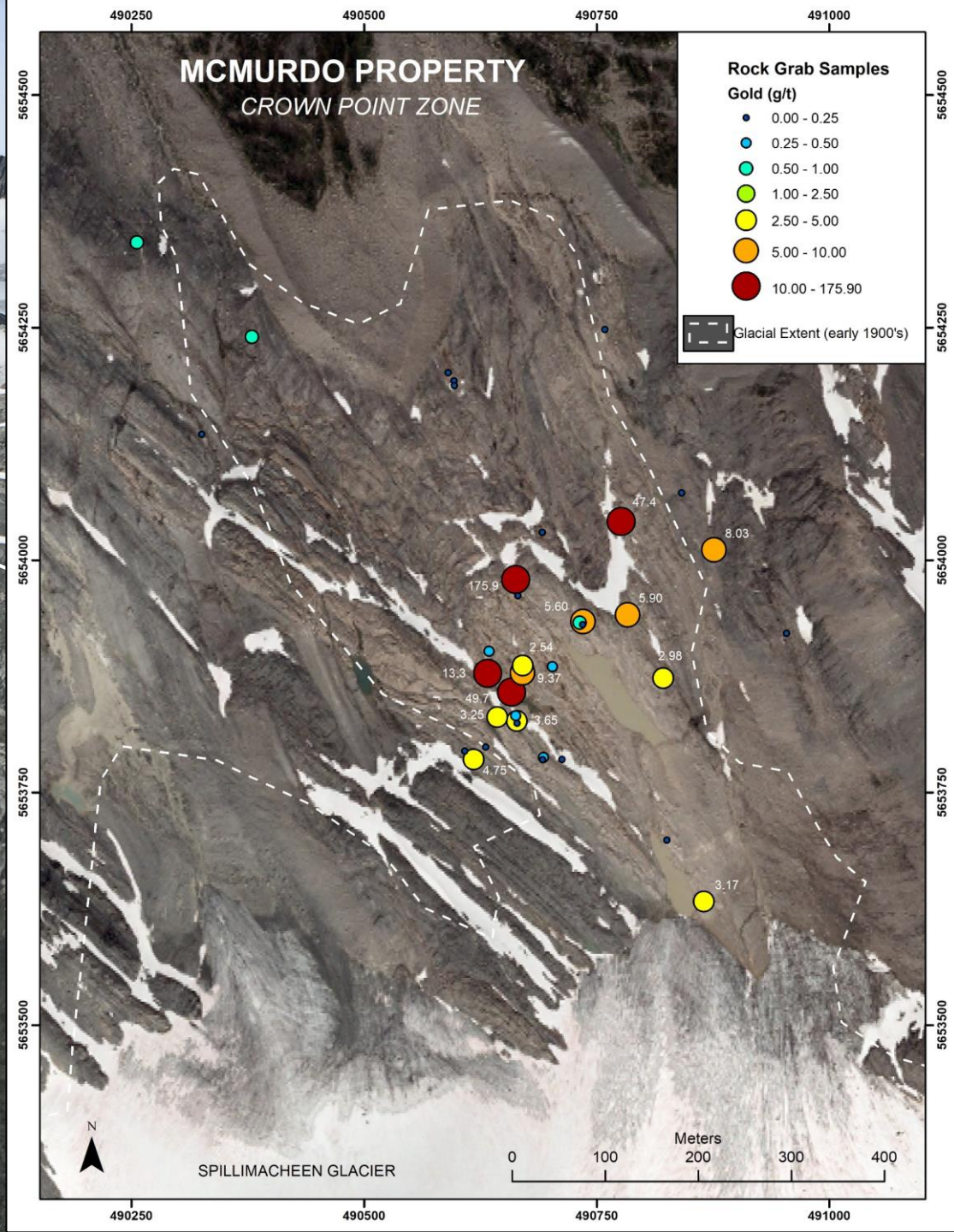
NEW SHOWINGS 2020

Spillimacheen Glacier

ICE EXTENT IN EARLY 1900'S

HISTORIC AU SHOWINGS (1930'S)

CROWN POINT ZONE



W/N POINT ZONE

Looking northwest



Lab Sample - Pyritic Quartz Vein – 176.9 g/t Au (5.13 oz/ton)

CROWN POINT ZONE

Looking northeast



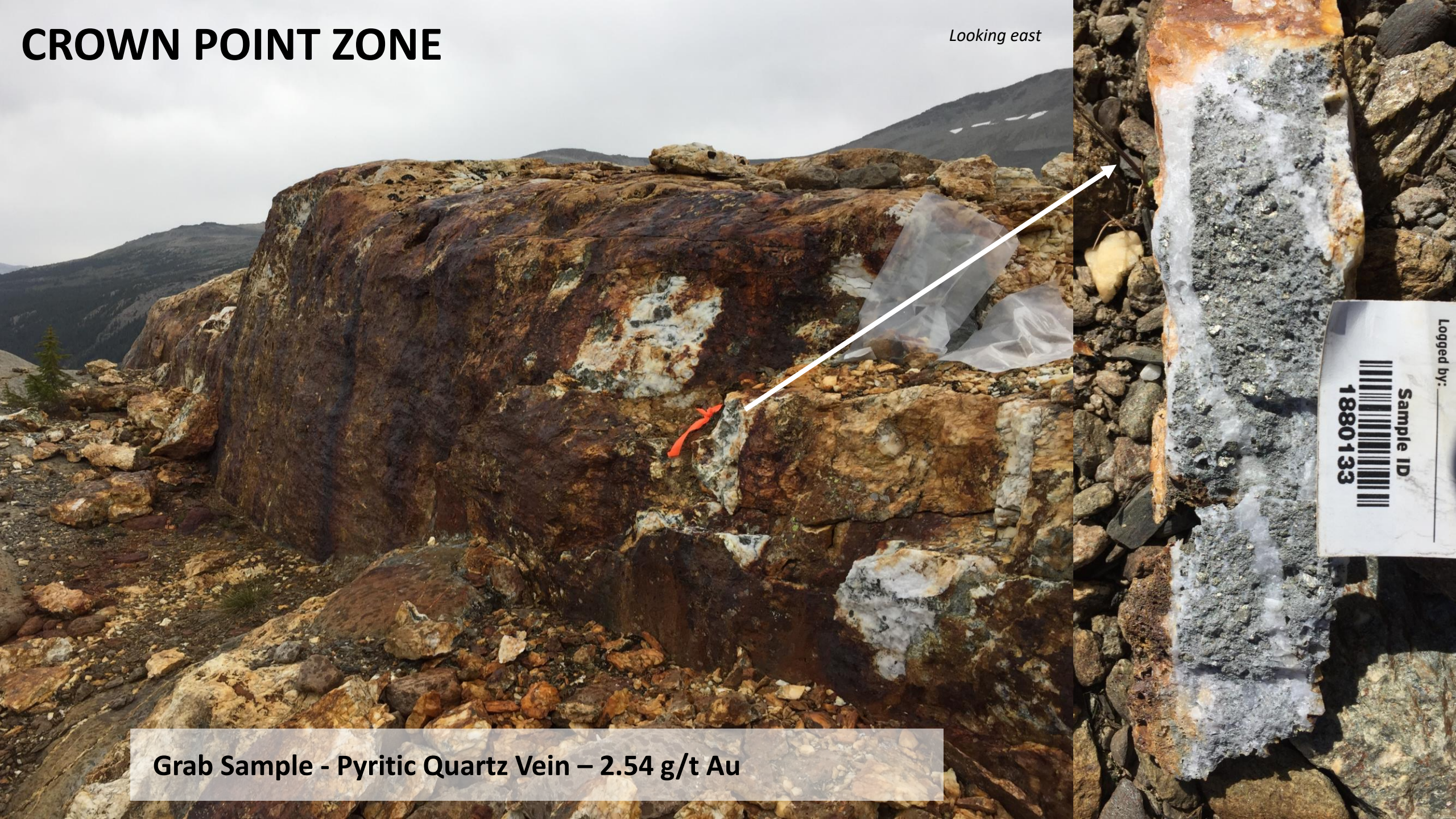
Date: _____
Logged by: _____
Sample ID
1880136



Grab Sample - Pyritic Quartz Vein – 5.6 g/t Au

CROWN POINT ZONE

Looking east



Logged by: _____
Sample ID
1880133

Grab Sample - Pyritic Quartz Vein – 2.54 g/t Au

CROWN POINT ZONE

Looking north



Grab Sample - Pyritic Quartz Vein – 8.03 g/t Au



Grab Sample - Pyritic Quartz Vein – 47.4 g/t Au

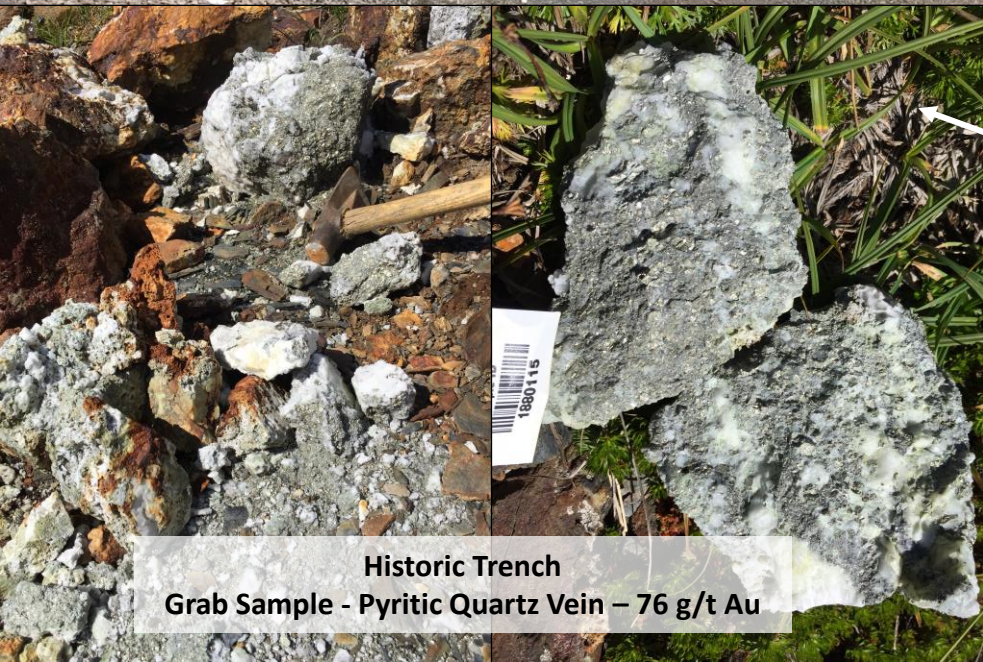


Grab Sample - Pyritic Quartz Vein – 49.7 g/t Au



BURNS ZONE

Looking South



DECISION CREEK

Historic Trench
Grab Sample - Pyritic Quartz Vein – 76 g/t Au

Head Office

Phone: (604) 681-1820

**Goldstrike Resources Ltd.
Suite 1010-1130 West Pender St.
Vancouver, British Columbia
Canada V6E 4A4**

Email: info@goldstrikeresources.com

Website: goldstrikeresources.com

