

# CORPORATE PRESENTATION

March 21<sup>st</sup>, 2023



TSX.V: TBK

A Canadian project generator with a focus on precious metal exploration in British Columbia and the Yukon Territory.

# DISCLAIMER

Forward looking statements contained in this Presentation that are not historical facts are "forward-looking information" or "forward-looking statements" (collectively, "Forward-Looking Information") within the meaning of applicable Canadian securities legislation and the United States Private Securities Litigation Reform Act of 1995. Forward-Looking Information includes, but is not limited to, disclosure regarding possible events, conditions or financial performance that is based on assumptions about future economic conditions and courses of action; expectations regarding future exploration and drilling programs; and receipt of related permitting. In certain cases, Forward-Looking Information can be identified by the use of words and phrases such as "anticipates", "expects", "understanding", "has agreed to" or variations of such words and phrases or statements that certain actions, events or results "would", "occur" or "be achieved". Although Trailbreaker has attempted to identify important factors that could affect Trailbreaker and may cause actual actions, events or results to differ materially from those described in Forward-Looking Information, there may be other factors that cause actions, events or results not to be as anticipated, estimated or intended. In making the forward-looking statements in this Presentation, if any, Trailbreaker has applied several material assumptions, including the assumption that general business and economic conditions will not change in a materially adverse manner. There can be no assurance that Forward-Looking Information will prove to be accurate, as actual results and future events could differ materially from those anticipated in such statements. Accordingly, readers should not place undue reliance on Forward-Looking Information. Except as required by law, Trailbreaker does not assume any obligation to release publicly any revisions to Forward-Looking Information contained in this Presentation to reflect events or circumstances after the date hereof or to reflect the occurrence of unanticipated events – This Presentation is not for redistribution.

# 01

## WHO WE ARE

A group of project generators and explorers with a track record of effective grassroots exploration and lasting community relations.

# 02

## WHAT WE DO

Continuous exploration, property acquisition and research, allowing us to maintain a portfolio of quality precious metal properties.

# 03

## WHERE WE EXPLORE

In mining-friendly British Columbia and Yukon Territory, Canada where we currently own interest in 7 early-stage projects.



*The company is currently advancing its newest asset, the Atsutla Gold project: a newly discovered gold prospect in northwestern British Columbia, 120 km east of Atlin, BC. We identify underexplored regions in North America that have been overlooked for gold mineralization and, with the use of the latest advanced scientific methods, explore, discover, and advance gold projects. We plan to continue adding to our portfolio and creating value for everyone.”*

**- Daithi Mac Gearailt,  
President and CEO**

# INVESTMENT OPPORTUNITY



**TRACK RECORD OF  
SUCCESSFUL PROJECT  
GENERATION**



**SEASONED TEAM OF  
PROSPECTORS & GEOLOGISTS**



**LARGE UPSIDE  
POTENTIAL ON ALL PROJECTS**



**A CANADIAN  
COMPANY FOCUSED  
ON GOLD**



**EXPLORING IN MINING  
FRIENDLY BRITISH COLUMBIA  
& YUKON**

CAPITAL STRUCTURE	AS OF March 21, 2023 - UNAUDITED
Shares Issued & Outstanding	19,967,614
Fully Diluted	32,939,714
Options (\$0.24 - \$5.95)	2,427,500
Warrants (\$0.15 - \$0.25)	10,544,600
52-Week Range	\$0.08 – \$0.34

## TIGHT SHARE STRUCTURE WITH NO DEBT

Trailbreaker Resources maintains a strategic investment in Golden Sky Minerals (TSX: AUEN)





# EXECUTIVE TEAM



**Daithi Mac Gearailt**  
**President, CEO & Director**

Mr. Mac Gearailt is a geologist who graduated with Honours from the National University of Ireland. He has worked as an exploration geologist for over 14 years in Alaska, Nevada, British Columbia and Yukon. During his career, he has been involved in several new discoveries and has worked with both junior and senior mining companies covering project generation, property evaluation, and management of multimillion-dollar exploration and drilling programs. In addition to identifying, analyzing, strategizing and negotiating acquisitions or divestments of mineral properties, Mr. Mac Gearailt has also been instrumental in raising millions of dollars toward the financing of exploration projects.



**Lucy Zhang, CPA, CGA, MBA**  
**Director & CFO**

Ms. Zhang is a member of the Chartered Professional Accountants of British Columbia. She has an Honours BA from Suzhou University, China, and an MBA (Honors) from Royal Roads University. Ms. Zhang's recent experience has included controller positions in administration, accounting, and finance with publicly traded mining and exploration companies.



**Ewan Webster, Ph.D.**  
**Geologist Director**

Mr. Webster is an exploration geologist who has worked for a number of public companies in North and South America, on a variety of different deposit types. He is currently the senior geologist for the Metal's Group of Companies and holds the position of President, CEO and Director for Thesis Gold. He holds a First-Class Honours degree in geology from the University of Glasgow, Scotland and is a registered professional geoscientist in British Columbia. His PhD research focused on unravelling aspects of the structure, stratigraphy, tectonics, and metamorphism of southeastern British Columbia.



**Frank Wheatley**  
**Director**

Mr. Wheatley is currently an Independent Director of Endeavour Mining Corporation. He has more than 35 years of experience that includes legal and executive positions with Canadian public mining companies. He has served as Chief Executive Officer and General Counsel for a number of TSX-listed companies in the mining sector and also brings experience as an Independent Director, Committee Chair, and Committee Member.



**John A. Kuehne M. Mgmt., CA, CPA**  
**Director**

Mr. Kuehne is presently the Chief Financial Officer of Highbury Energy Inc. Highbury has developed a proprietary clean technology that can decarbonize transportation fuels, natural gas, industrial heating applications, and power the Hydrogen fuel revolution. From 2010 to 2015, John was engaged with Global Energy Horizons (GEHC). From 2000 to 2009, John was President of SmallCap Corporate Partners Inc. John was the Chief Financial Officer of Doman Industries Limited, a publicly-traded Canadian forest products company. John spent 9 years with Deloitte.

# GEOLOGICAL FIELD TEAM

Led by CEO Daithi Mac Gearailt, the team has been working together for over a decade with many new gold discoveries across the Yukon Territory and British Columbia.

The team includes some of the industry's best consulting boots-on-the-ground prospectors and geologists that help turn conceptual exploration targets into discoveries.

## OUR FOCUS

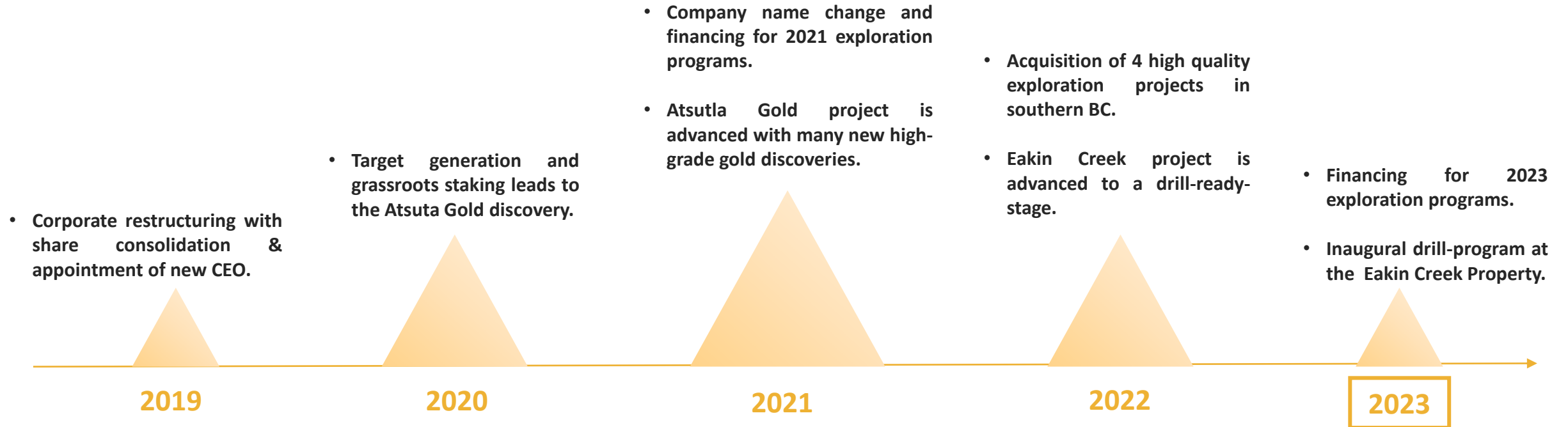
Underexplored and overlooked regions

Evaluating large tracts of land, looking for district scale discoveries

100% ownership in early-stage exploration projects in British Columbia and Yukon



# CORPORATE MILESTONES



On March 22, 2021 the company commenced trading on the TSXV under the symbol TBK.V. The name of Trailbreaker Resources represents the company's focus on developing an evolved brand of evaluating under-explored areas in safe jurisdictions.



# GOLD ASSET PORTFOLIO

01

## **ATSUTLA GOLD PROJECT, NORTHERN BC**

A brand-new (2021), district-scale, high-grade gold discovery situated 70 km south of the Yukon-BC border and 130 km northwest of Dease Lake, British Columbia. To date, 5 significant gold zones have been defined over 26 kilometers with grab samples assaying over 18 oz/ton Au.

02

## **EAKIN CREEK, SOUTHERN BC**

A newly acquired (2022) project located in an under-explored part of the Quesnel terrane which is host to many of BC's currently producing gold and copper mines.

03

## **EAGLE LAKE, SOUTHERN BC**

The property is located 55 km east of Williams Lake and covers over 18,000-ha of perspective ground that is contiguous to the Cu-Au Woodjam project. Eagle Lake represent an early-stage Cu-Au porphyry prospect with strong potential for high-grade orogenic gold mineralization that was previously overlooked.

04

## **OTHER PROPERTIES**

Trailbreaker is continually generating new projects via staking and property acquisitions, focused on under-explored regions of British Columbia and Yukon Territory, adding to our growing portfolio of high-quality gold assets. Other property assets include: **Plateau, Skelly, McMurdo, Castle Rock and Connector Gold.**

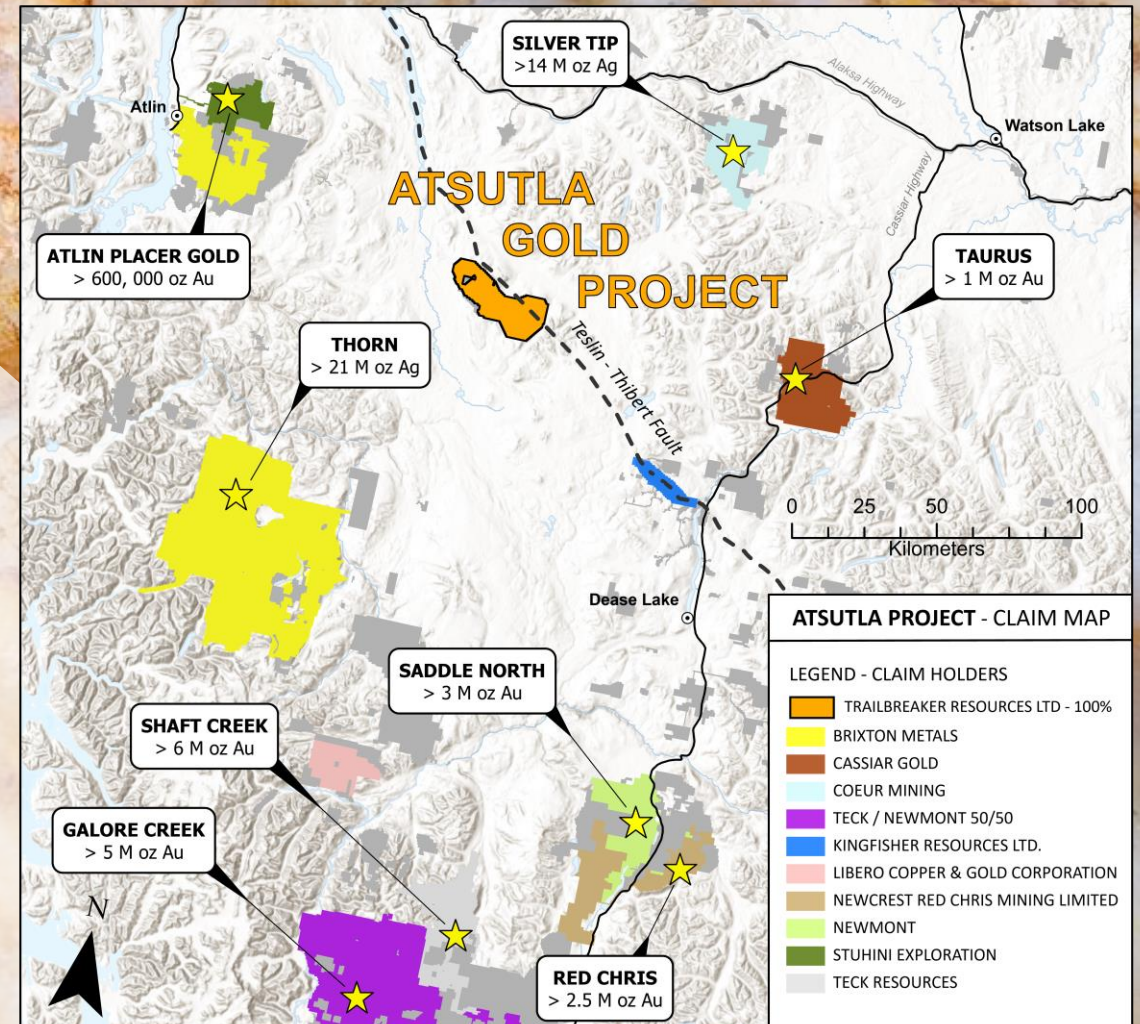




# ATSUTLA GOLD PROJECT

## KEY POINTS

- **Brand-new, high-grade gold discovery** in a part of BC with no previous gold exploration.
- Huge land package with **over 400 square km** of prospective ground.
- Majority of claim package is **100%-owned** with no underlying royalties
- **District-scale potential** with 5 significant gold zones defined over 26 kilometers in just 2 field seasons
- Widespread high-grade rock grab samples up to **18.38 oz/ton Au**
- **Visible gold** sampled over a 750 meter extent
- Majority of the property remains unexplored
- Situated in the right geological setting for porphyry Cu-Au and orogenic gold deposits.
- The Right Jurisdiction (mining-friendly British Columbia).





# 01

## ATSUTLA GOLD PROJECT

TRAILBREAKER DISCOVERS NEW SNOOK ZONE (Nov 28<sup>th</sup>, 2022, news release)

- In just 2 field seasons, **5 gold zones have been defined over 26 km** in a part of BC that was not previously recognized for gold
- **Rock sample assays exceeding 18 oz/ton with course visible gold mineralization**
- **Drill-Ready** (permit pending) - Detailed structural geological mapping/modeling has outlined several drill targets

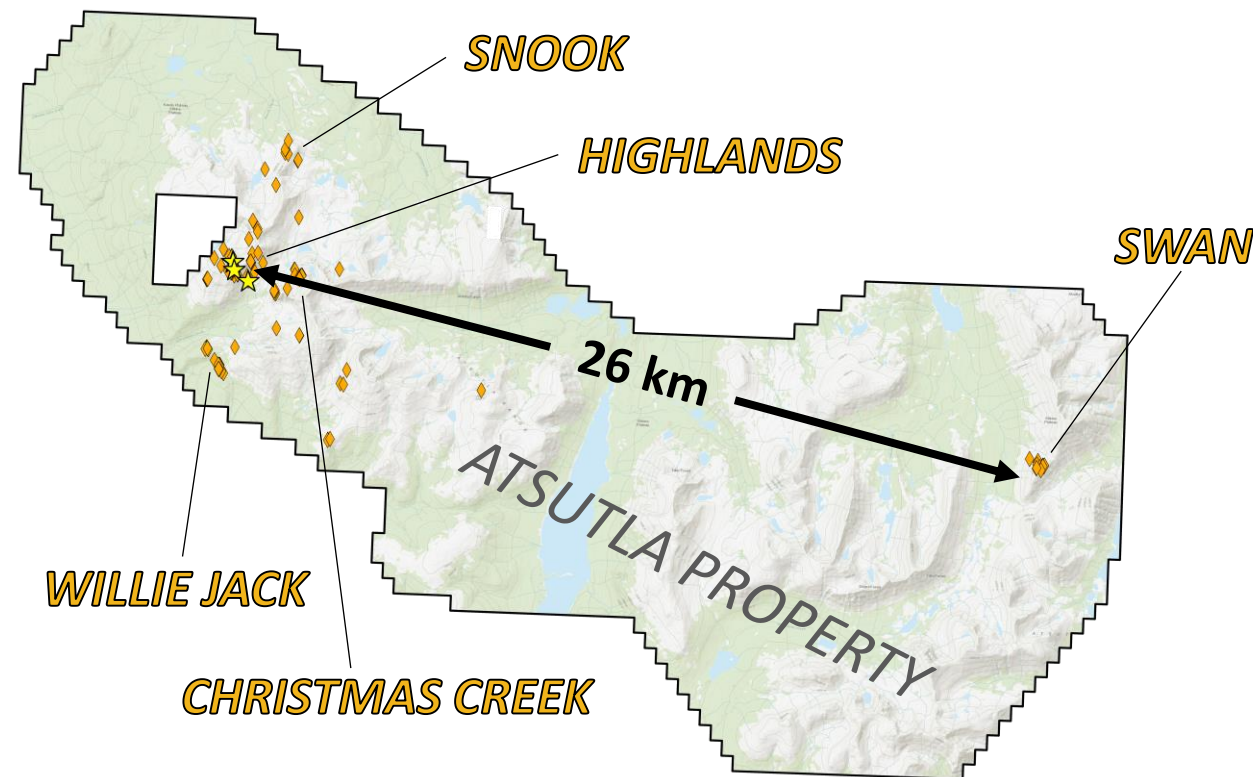
**HIGHLANDS** | Represents a 750 m x 600 m area that contains widespread high-grade gold quartz veins in outcrop, subcrop and float with grades exceeding 630 g/t Au (18 oz/ton)

**WILLIE JACK** | Defined by a 1.2 km-long gold-in-soil anomaly with soil Au values up to 3.77 g/t and rock grab samples up 9.9 g/t Au.

**SWAN** | The Swan zone represents a Cu-Au porphyry prospect, defined by a 900 m x 700 m Au-Ag-As-Sb-Cu-Mo-Pb soil anomaly, with soil samples assaying up to 406 ppb Au and 732 ppm Cu. Grab samples from bedrock, proximal float, and talus have returned grades up to 11.7 g/t Au, 212 g/t Ag and 0.81% Cu.

**CHRISTMAS CREEK** | High-grade mineralization was discovered 2.0 km east of the Highlands zone. A 30 cm-wide galena-rich quartz vein in bedrock returned assay values up to 102 g/t Au and 524 g/t Ag.

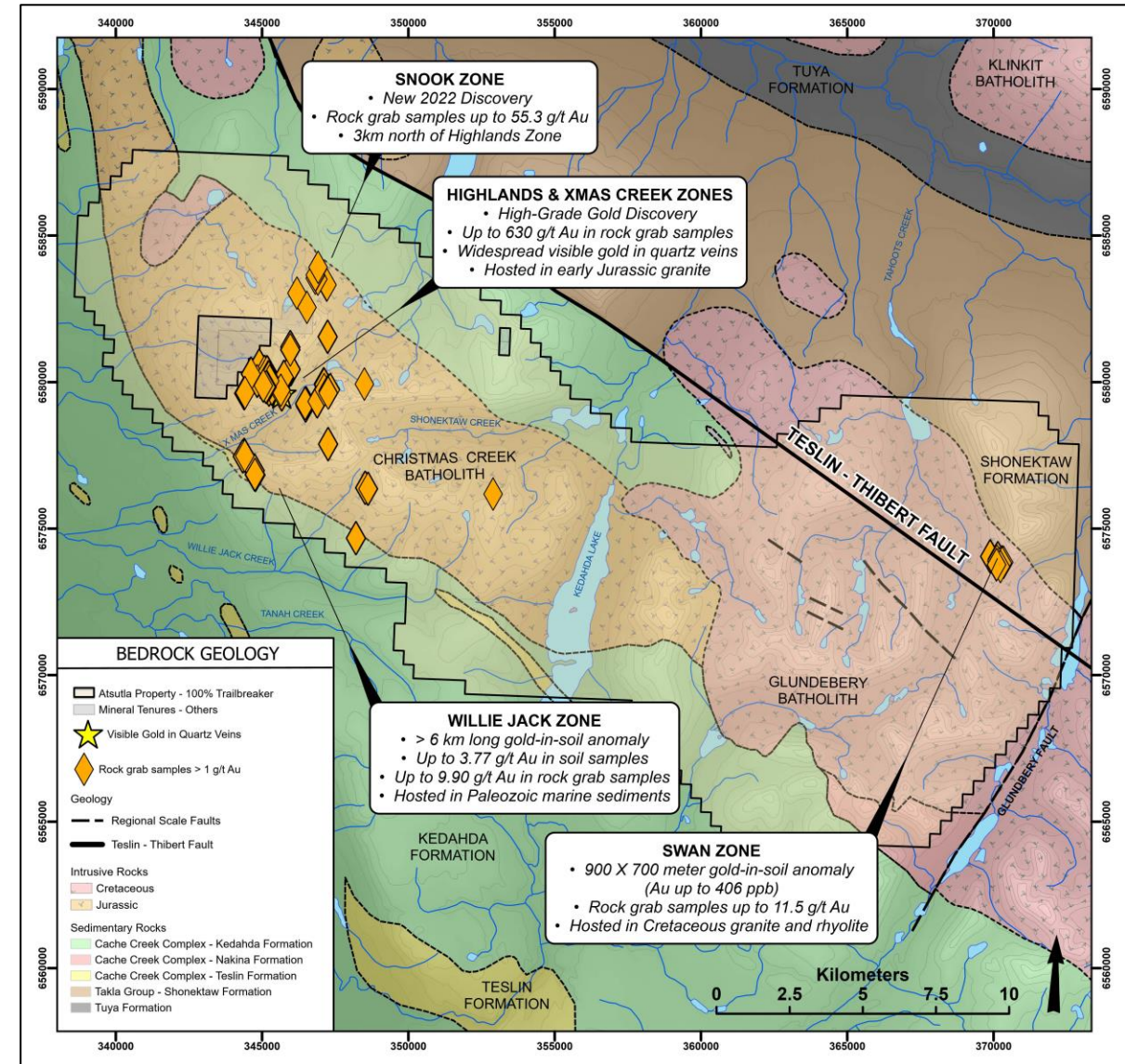
**SNOOK** | A new discovery in 2022, the Snook zone is 3.5 km north of the Highlands zone and is defined by numerous sulphide-rich quartz vein outcrop and talus showings assaying up to 55.3 g/t Au.



# 01

## ATSUTLA GOLD PROJECT GEOLOGY AND MINERALIZATION

- Potential for a wide variety of gold deposits including porphyry and orogenic vein systems.
- The project straddles the Teslin-Thibert fault system with the Cache Creek terrane juxtaposed against the Quesnel terrane.
  - Deep-seated, terrane-bounding faults are ideal structures for acting as conduits for mineralized fluids.
  - These structures often control multi-stage hydrothermal events that result in clusters of ore deposits, which are often referred to as “camps”.
- Covers Mesozoic age plutons emplaced in sediments of the Cache Creek terrane and volcanics of the Quesnel terrane.
  - The region was active during both Jurassic and Cretaceous time periods which represent the most significant Cu-Au mineralization timeframe in British Columbia.
- With the project encompassing similar stratigraphy and structures as the analogous Atlin & Cassiar gold camps (>2 Moz Au), there is excellent potential for discovering Northern BC’s next gold camp.



# 01

## ATSUTLA GOLD PROJECT TWO MAIN EXPLORATION MODELS

### OROGENIC GOLD - HIGHLANDS & WILLIE JACK ZONES

- Orogenic gold camps have produced over 10 million ounces gold in British Columbia

- Significant orogenic gold camps:

#### CARIBOO (Osisko)

- Historic Lode Production 1.2 Moz Au
- Historic Placer Production 3.0 Moz Au
- Total M&I Resource 3.20 Moz Au, Inferred Resource 2.72 Moz Au

#### BRALORNE (Talisker Resources)

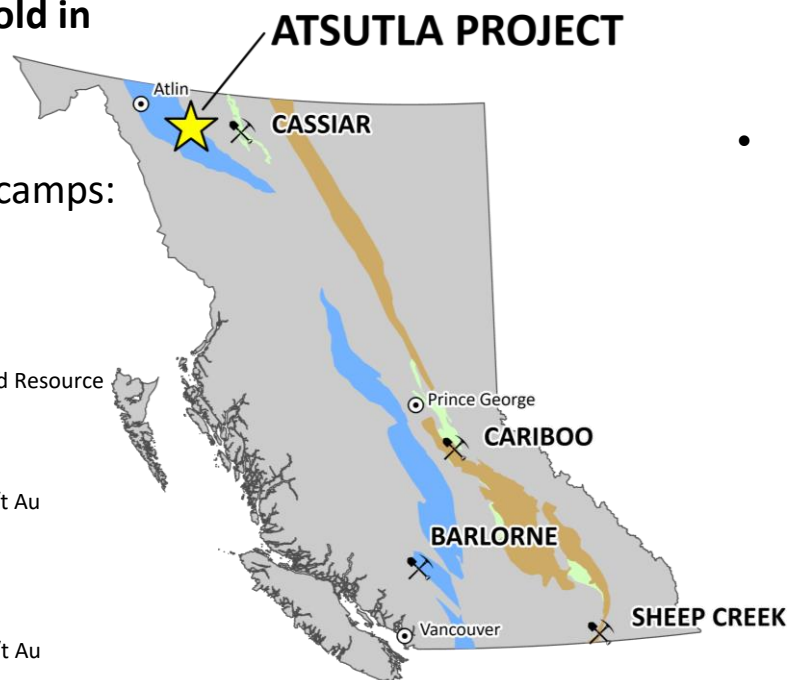
- Historic Production 4.2 Moz Au @ 17.7 g/t Au
- Mineralization to 2 km depth

#### CASSIAR (Cassiar Gold)

- Historic Production 424 Koz Au
- Inferred Resource 1.01 Moz Au @ 1.43 g/t Au

#### SHEEP CREEK (Cassiar Gold)

- Historic Production 785 Koz Au @ 14.4 g/t Au



Legend – Geological Terranes

- Oceanic Terranes (Cache Creek & Bridge River)
- Slide Mountain
- Ancestral North American - Basinal Strata

### PORPHYRY Cu-Au - Swan Zone

- Gold-enriched copper porphyry deposits situated along the Quesnel terrane have a combined production and resource of over 20 million ounces gold in BC

- Significant Au-enriched porphyry deposits hosted in the Quesnel tectonic terrane:

#### KEMESS (Centerra)

- >5 Moz Au (combined production and total resources)

#### MT. MILLIGAN (Centerra)

- >5 Moz Au (combined production and total resources)

#### MT POLLEY (Imperial Metals)

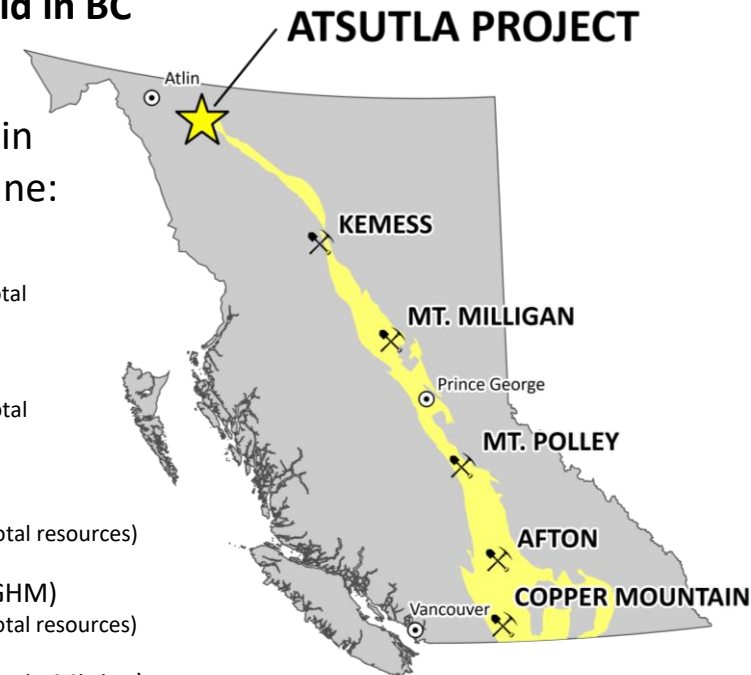
- >3 Moz Au (combined production and total resources)

#### AFTON / AJAX CAMP (New Gold, KGHM)

- >4 Moz Au (combined production and total resources)

#### COPPER MOUNTAIN (Copper Mountain Mining)

- >2 Moz Au (combined production and total resources)



Legend – Geological Terranes

- Quesnel



# 01

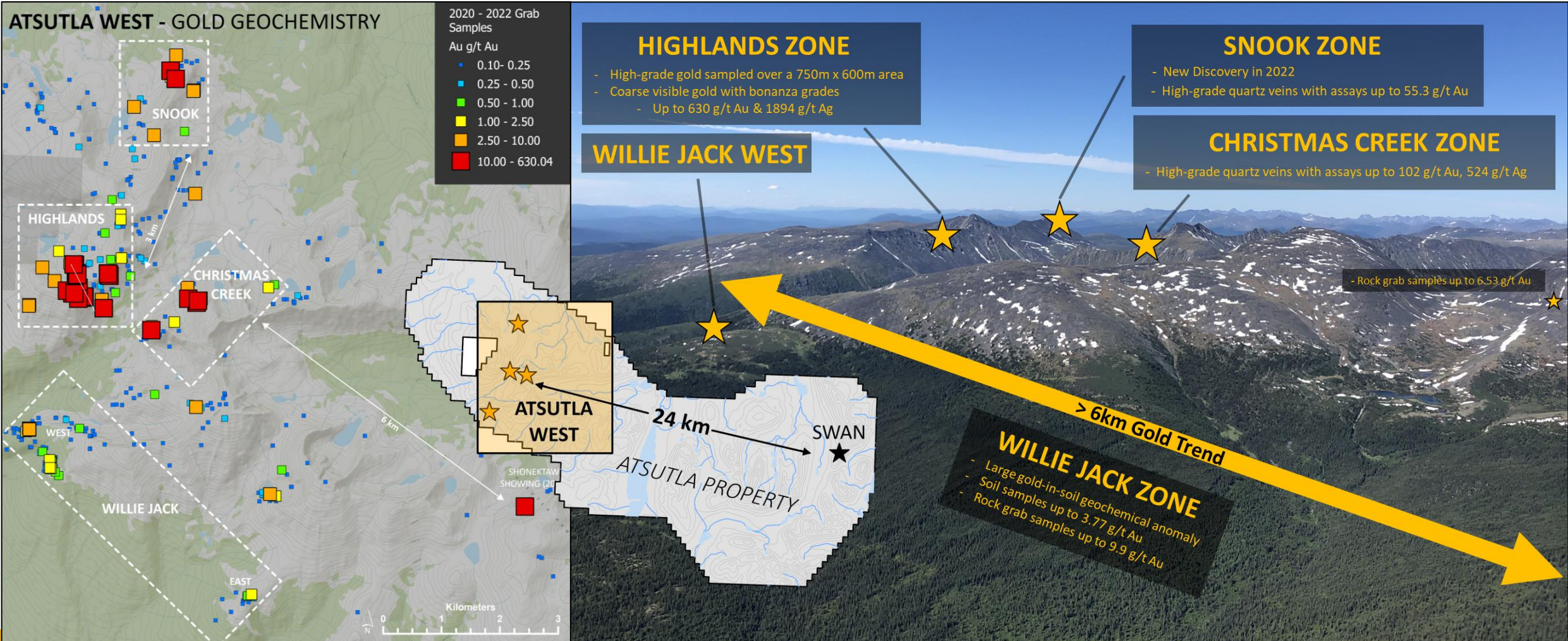
## ATSUTLA PROJECT HIGH-GRADE GOLD

ATSUTLA  
WEST

HIGHLANDS  
ZONE

WILLIE JACK  
ZONE

SWAN ZONE

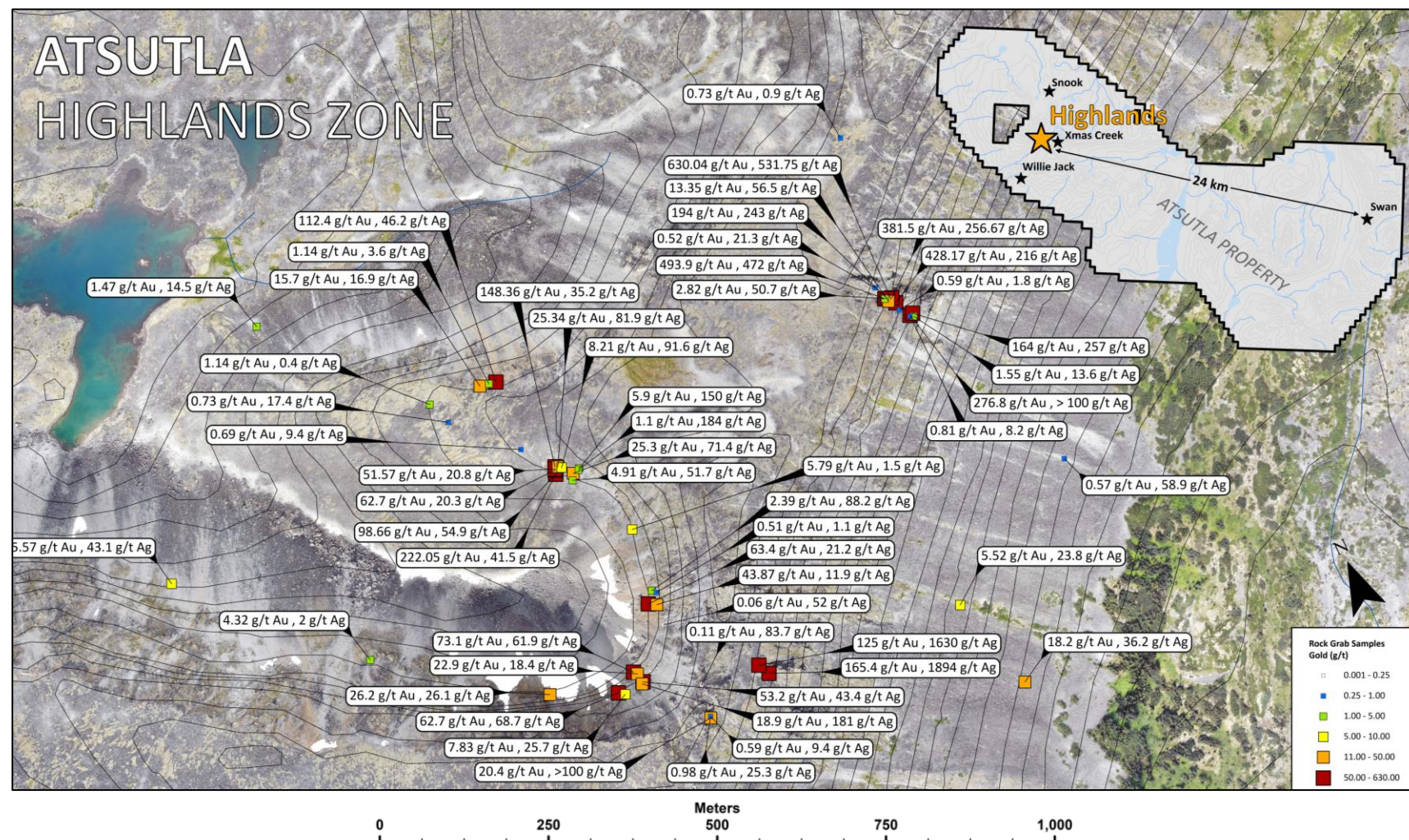




# 01

## ATSUTLA PROJECT HIGH-GRADE GOLD

- Hosted entirely within the early Jurassic age granite of the Christmas Creek batholith.
- Comprised of an extensive, high-grade (>100 g/t Au) quartz vein system occurring within a 750m x 600m area with multiple coarse visible gold showings.
- A total 45 rock grab samples grading greater than 1 g/t Au, 29 rock grab samples grading greater than 13 g/t Au and 12 rock grab samples grading more than 100 g/t Au. Several rock grab samples contained coarse visible gold.





# 01

## ATSUTLA PROJECT COARSE VISIBLE GOLD

ATSUTLA  
WEST

HIGHLANDS  
ZONE

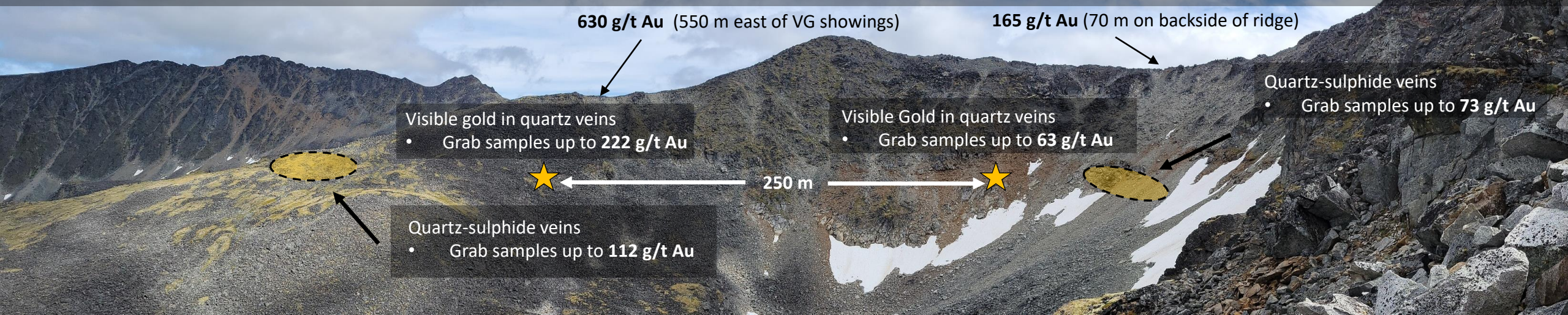
WILLIE JACK  
ZONE

SWAN ZONE



### HIGHLANDS ZONE

*High-grade gold sampled over a 750m x 600 m area*

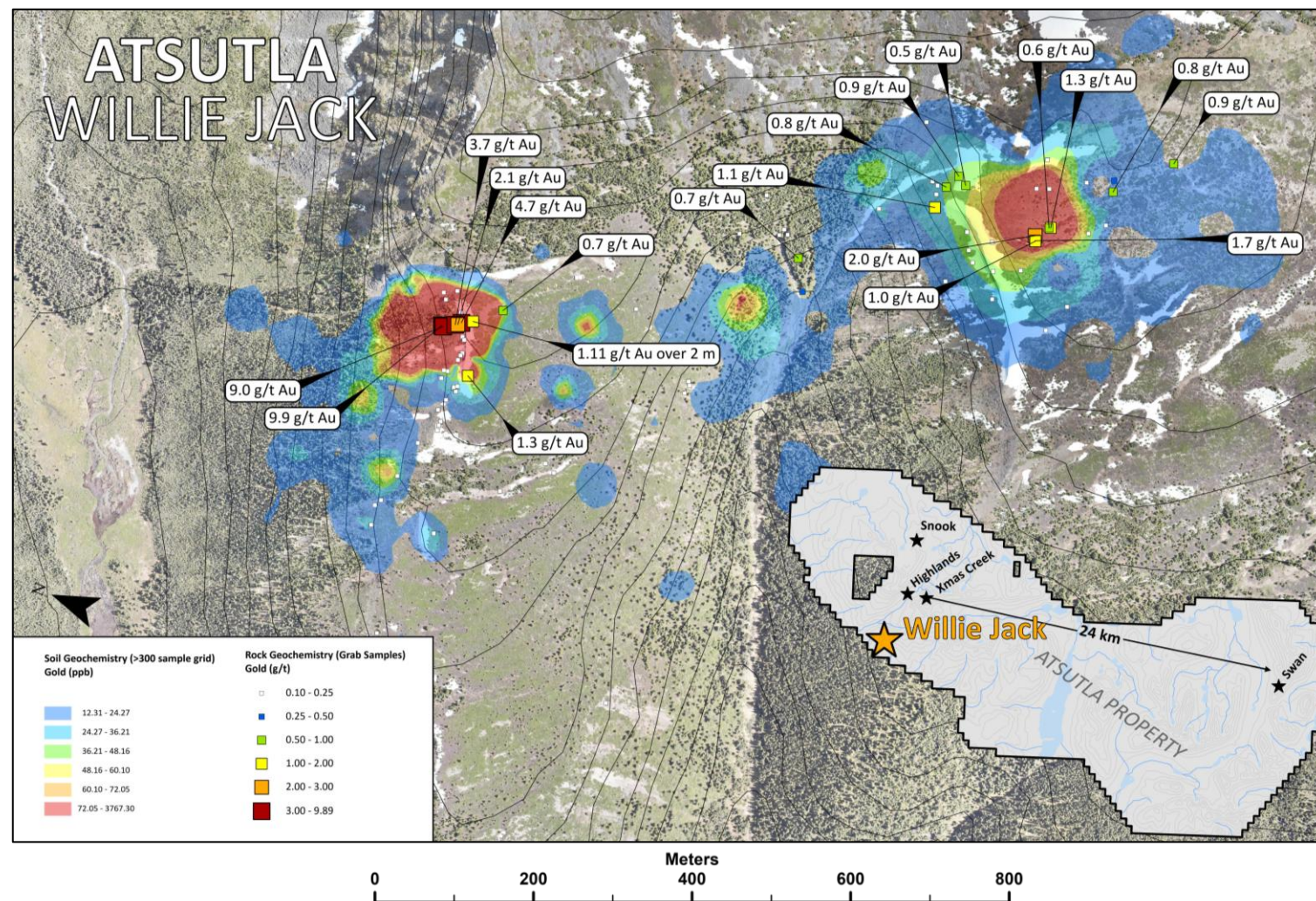




# 01

## ATSUTLA PROJECT GOLD-IN-SOIL ANOMALY

- A robust gold-in-soil anomaly with metasediment-hosted auriferous quartz veining
- Covers the southwestern margin of the early Jurassic Christmas Creek batholith, where it lies in contact with older, Permian Kedahda formation sediments.
- A 1.25-kilometer-long, Au-As-Ag-Mo-Te soil anomaly, coined the Willie Jack trend, hosts auriferous quartz veins with rock grab sample assay values up to 9.9 g/t Au.
- The Willie Jack trend falls within a broader, 6.5-kilometer-long anomalous gold trend with soil sample assays up to 3.77 g/t Au.





# 01

## ATSUTLA PROJECT Cu-Au PORPHYRY TARGET

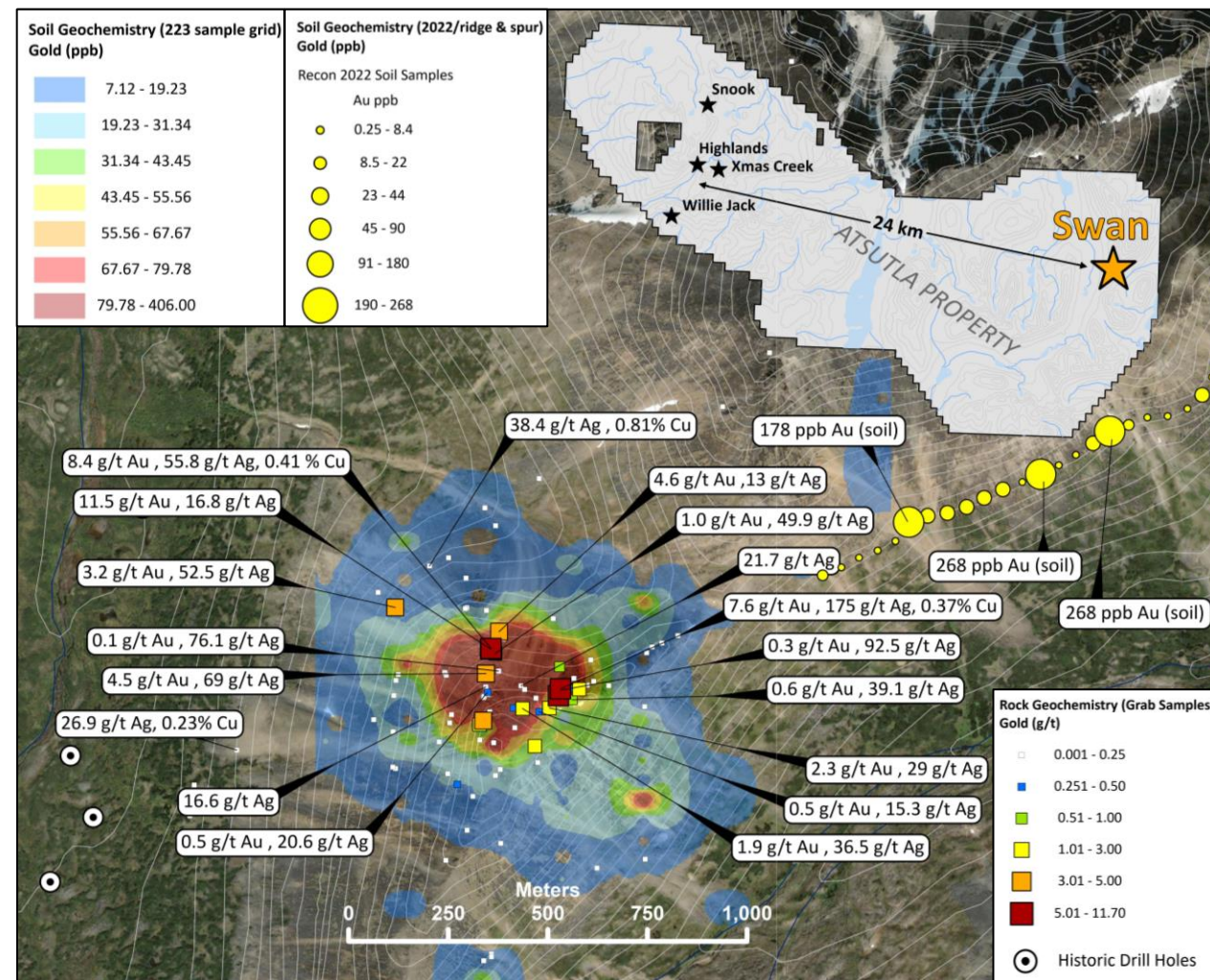
ATSUTLA  
WEST

HIGHLANDS  
ZONE

WILLIE JACK  
ZONE

SWAN ZONE

- Swan is located 26 km east of the high-grade gold discoveries at the Highlands zone and represents an early-stage Cu-Au porphyry prospect.
- Covers a historic molybdenum-copper porphyry prospect that was discovered in the late 1960s and was never tested for gold mineralization.
- The 2021 program outlined a 900m x 700m Au-As-Ag-Sb-Cu-Mo-Pb soil anomaly with soil sample values up to 0.41 g/t Au, 12.9 g/t Ag and 732 ppm Cu. The anomaly covers a gossanous mountain immediately east of historical drilling.
- Rock sampling to date has yielded assays of up to 11.7 g/t Au, 212 g/t Ag, and 0.81% Cu.
  - Gold typically occurs with arsenopyrite mineralization and epithermal quartz veining hosted in a leucogranite-porphyry unit of the Upper Cretaceous Glundebery Batholith.
  - The hydrothermal alteration pattern and unique geochemical signature observed at Swan suggest the zone may represent the upper lithocap of a Cu-Au porphyry system at depth.





# 01

## ATSUTLA PROJECT A GOLD-RICH GOSSAN

ATSUTLA  
WEST

HIGHLANDS  
ZONE

WILLIE JACK  
ZONE

SWAN ZONE



- 900m x 700m gold-silver and base metal soil anomaly
- Soil sample values up to 406 ppb Au
- Rock grab samples up to **11.7 g/t Au & 212 g/t Ag**



# 01

## ATSUTLA PROJECT

### DISTRICT-SCALE POTENTIAL

### THE RIGHT GEOLOGICAL SETTING

#### THE NEXT STEP...



Initial gold discovery in an area of British Columbia not previously known for gold mineralization (2020)



Continued surface exploration has outlined 5 high-grade gold zones over 26 km (2021 - 2022)



Detailed structural geological mapping and modeling has generated drill hole targets (2022)



**43-101 Technical Report completed for Atsutla Property (Q1 2023)**



**Seek partnership for funding the maiden drill program (Q 2 – 3 2023)**

# 02 EAKIN CREEK PROJECT

- Newly acquired in early 2022
- Located 100 km north of Kamloops, and road accessible via Highway 24 and well-maintained forestry roads
- 100%-owned by Trailbreaker Resources with no underlying payments or royalties
- Covers 1,610 hectares of prospective ground that drains into placer gold-bearing Eakin Creek
- Drill-ready stage

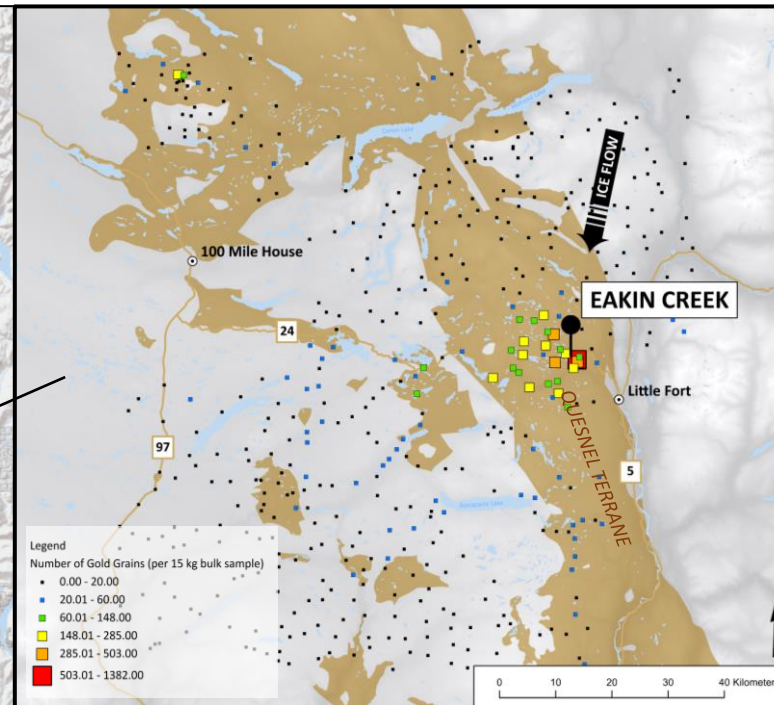




# 02

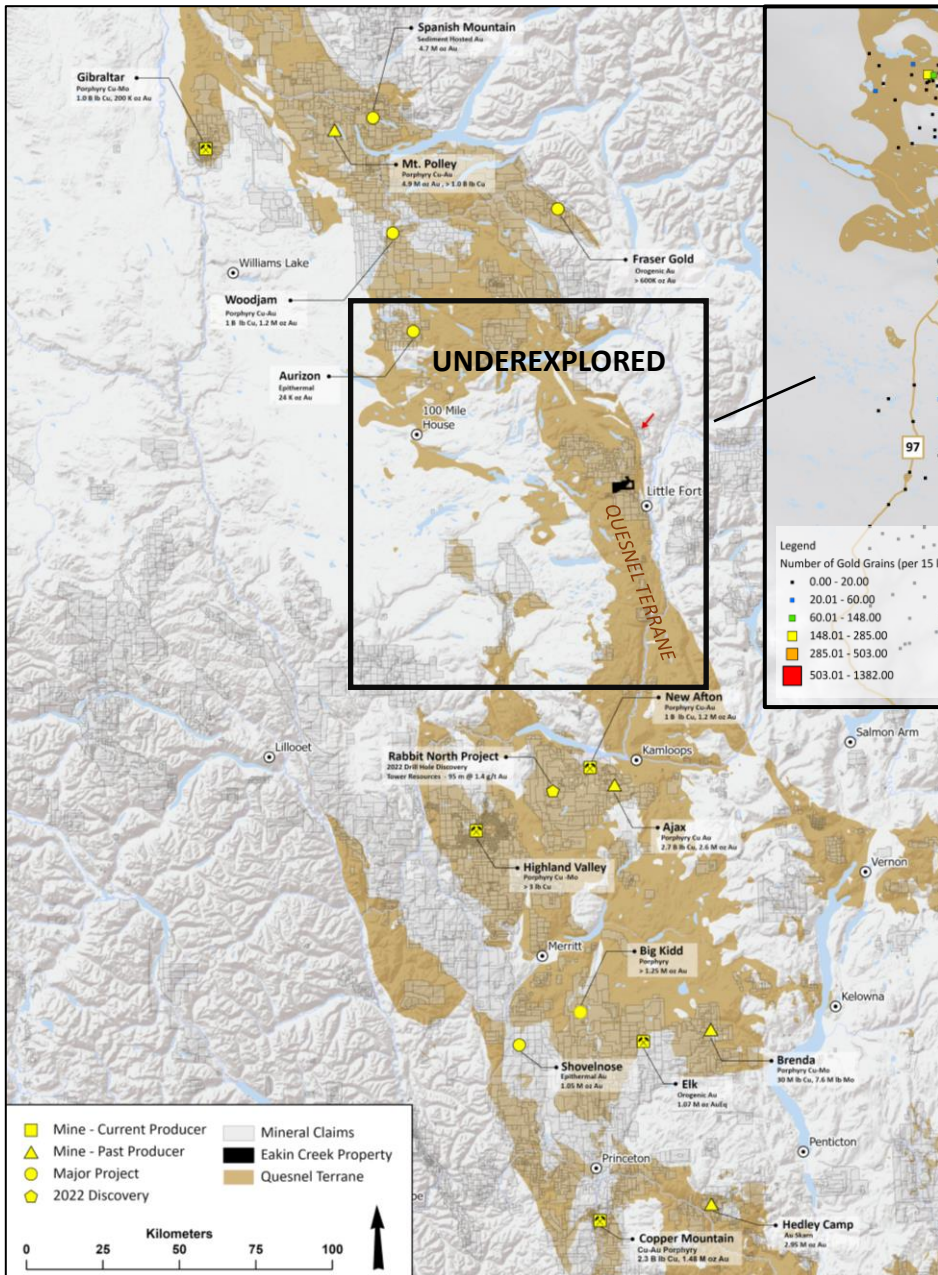
## EAKIN CREEK PROJECT UNDEREXPLORED

- Lies within an underexplored portion of the Quesnel tectonic terrane that hosts many of BC's producing copper and gold mines
- A regional-scale till sampling survey conducted by the Geological Survey of Canada has shown this area is strongly anomalous for gold and contains some of BC's highest gold grain count values.
- Strong potential for bulk tonnage intrusion-related gold system or Cu-Au porphyry system.



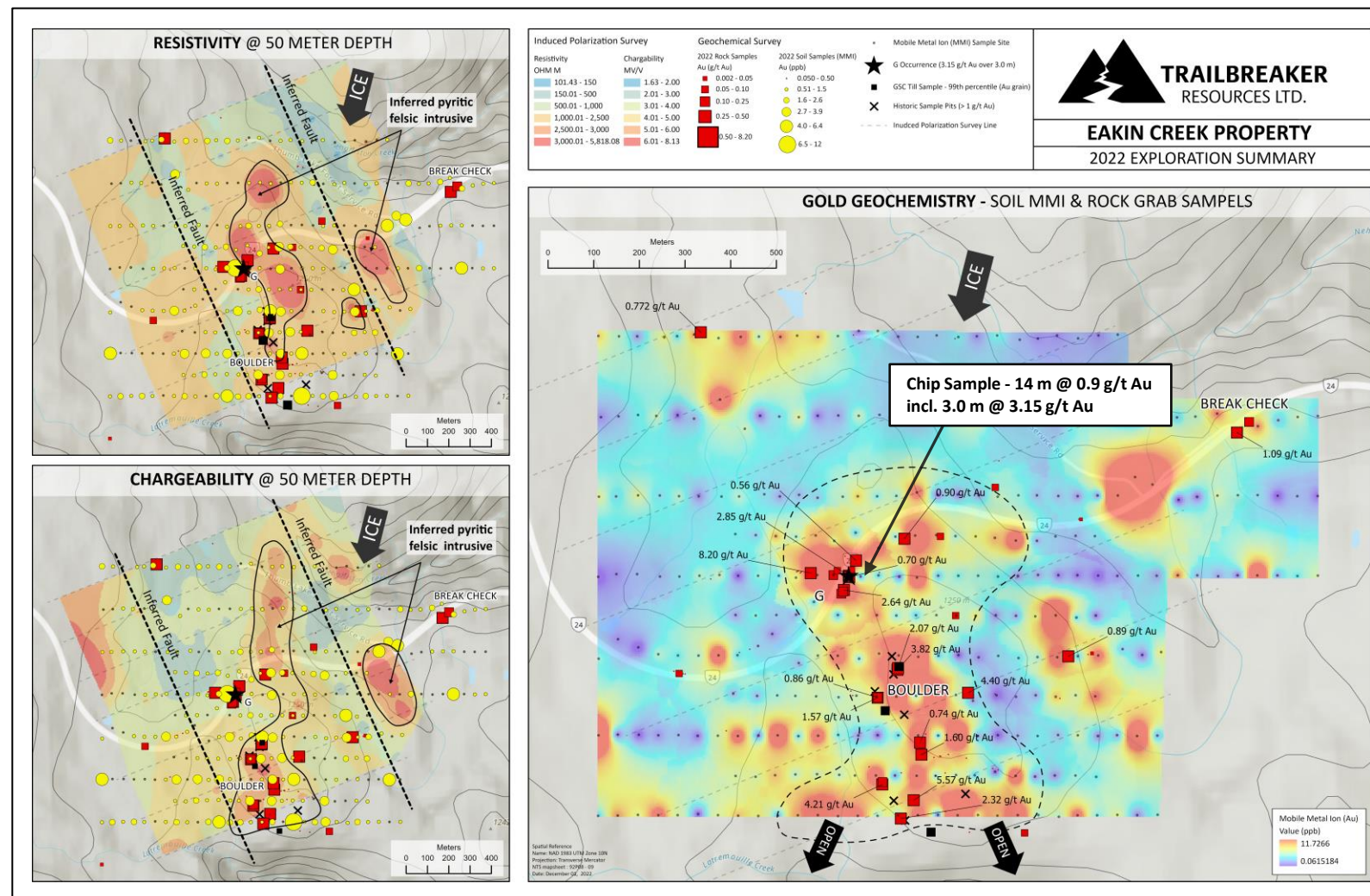
### PAST EXPLORATION

- Hosts a robust B-horizon gold-in-soil anomaly with 58 samples containing greater than 100 ppb Au and up to a maximum of 2,600 ppb (2.6 g/t Au)
- Historic high-grade rock grab samples assay up to 2.60 oz/ton (89 g/t) Au
- Limited outcrop sampling to date has returned a 3.0-metre chip sample interval grading 3.15 g/t Au, within a 14.0-metre interval grading 0.9 g/t Au
- No drilling has ever been conducted on the property





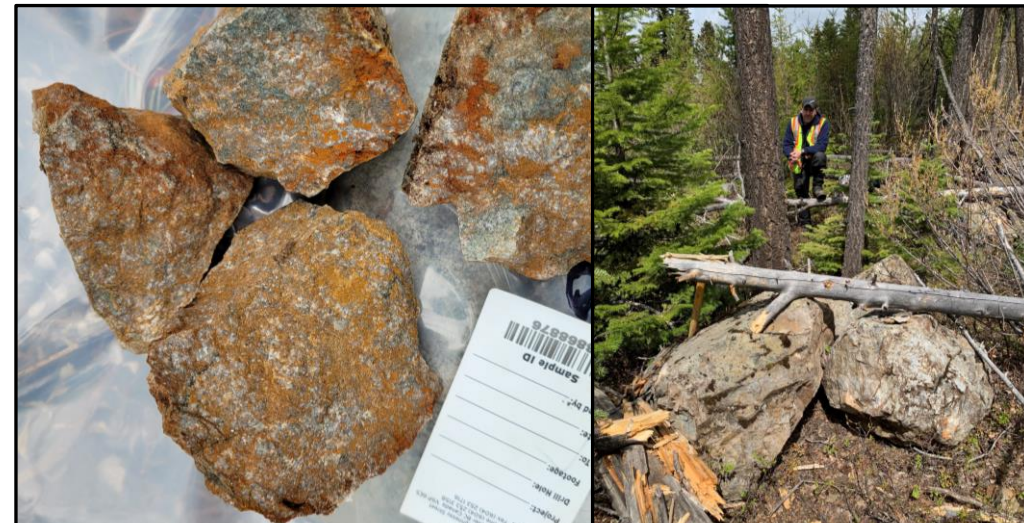
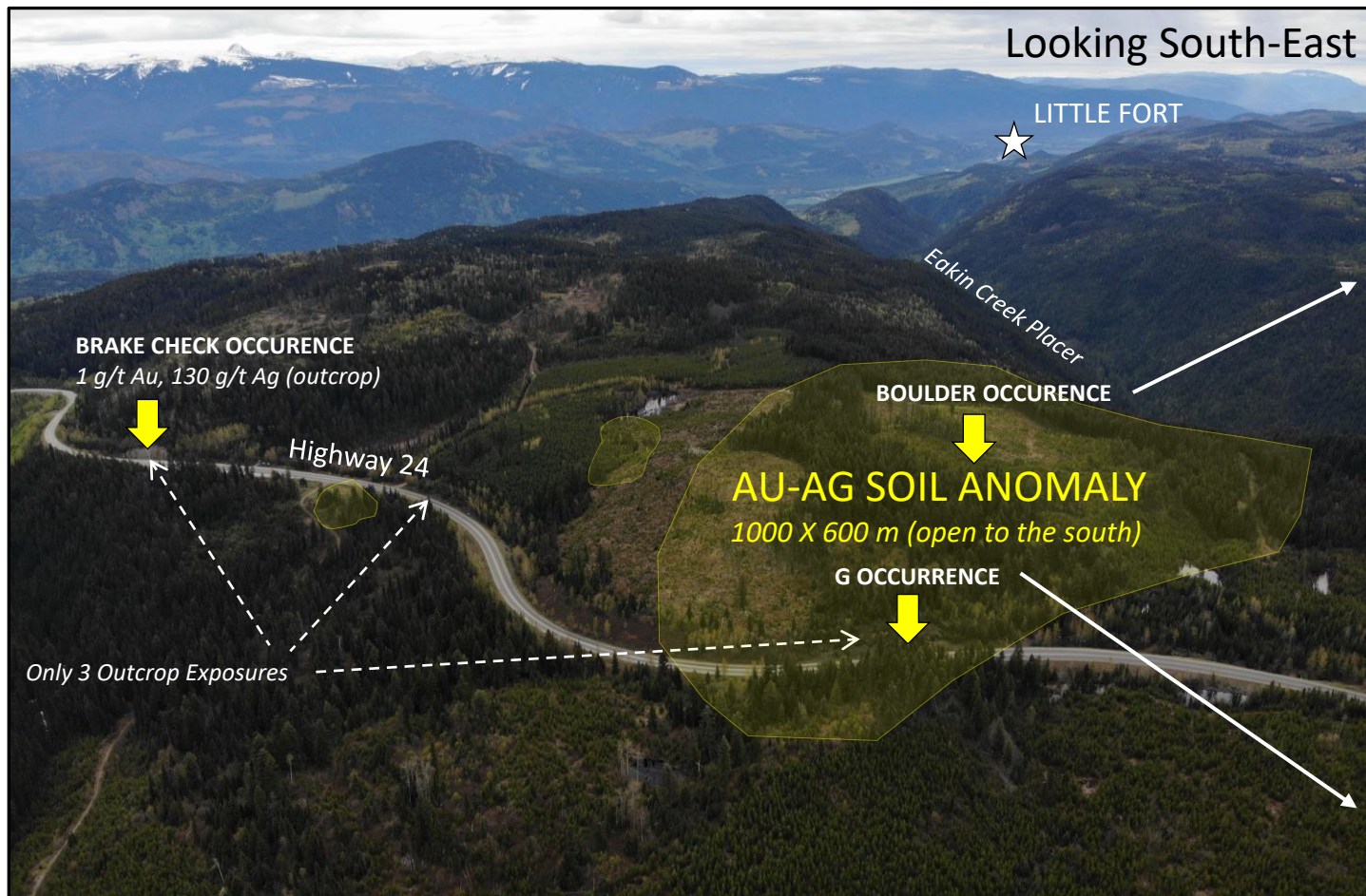
- A detailed, 302-sample Mobile Ion (MMI) soil survey has outlined a robust gold anomaly that measures 1000m by 600 m and remains open to the south
  - MMI technology was employed by Trailbreaker to more accurately define the underlying mineralization as the deep, widespread glacial tills often cause significant dispersion of elements.
- Additional prospecting confirmed the historic gold grades discovered in altered diorite bedrock along the highway ('G occurrence') and felsic intrusive float south of the highway ('Boulder occurrence').
- A 10.75 line-km detailed IP (induced polarization) survey outlined a robust resistivity and chargeability anomaly which correlates with the overlying MMI gold-in-soil anomaly and auriferous pyritic intrusive grab samples.
- The IP anomalies span over 1 km and are believed to represent the bedrock source of the auriferous felsic intrusive float sampled on surface.





# 02

## EAKIN CREEK PROJECT GREAT ACCESS AND INFRASTRUCTURE



**Boulder Occurrence** - Large boulder fields of angular, brecciated pyritic felsic intrusive, 2022 grab samples returned assays up to 5.57 g/t Au, 15.3 g/t Ag



**G Occurrence** - 3m chip sample interval grading 3.15 g/t Au within a 14 m interval containing 0.9 g/t Au.

**THE NEXT STEP...****PROPERTY ACQUISITION** (Q 1 – 3 2022)**MOBILE METAL ION (MMI) AND INDUCED POLARIZATION (IP) SURVEY COMPLETED** (Q 2 – 3 2022)

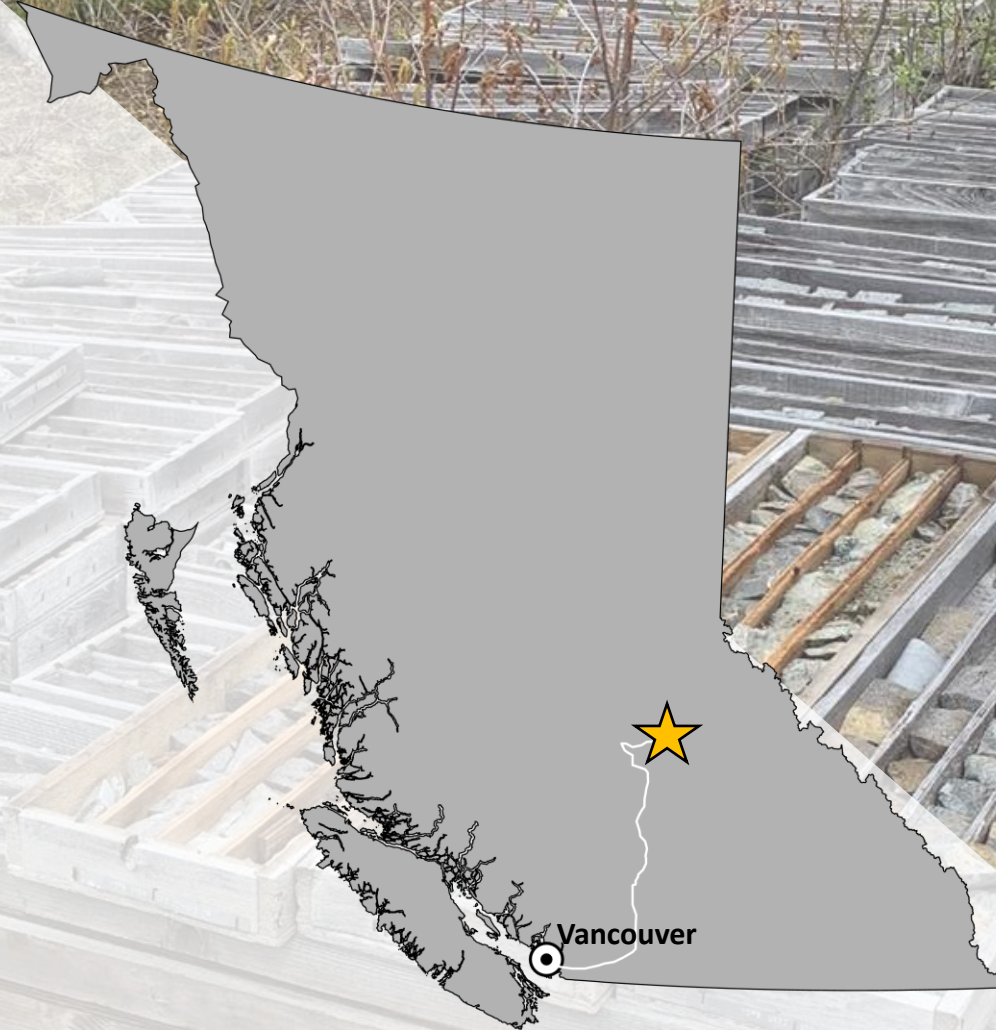
- Trailbreaker has utilized the most effective geochemical and geophysical technologies to de-risk a future drill program at Eakin Creek.
  - The MMI soil survey at Eakin Creek refined the historic soil anomaly further south of the highway which coincides with the auriferous rock grab float samples.
  - The IP survey has outlined large anomalies from surface down to a 200 meter depth that are believed to represent the bedrock source of the auriferous angular float boulders sampled within the gold-in-soil anomaly.

**DRILL PERMIT APPLICATION** (Q 4 2022)**2000 METER INAUGURAL REVERSE CIRCULATION (RC) DRILL CAMPAIGN** (Q 2 – 3 2023, PENDING FINANCING)



# 03 EAGLE LAKE PROJECT

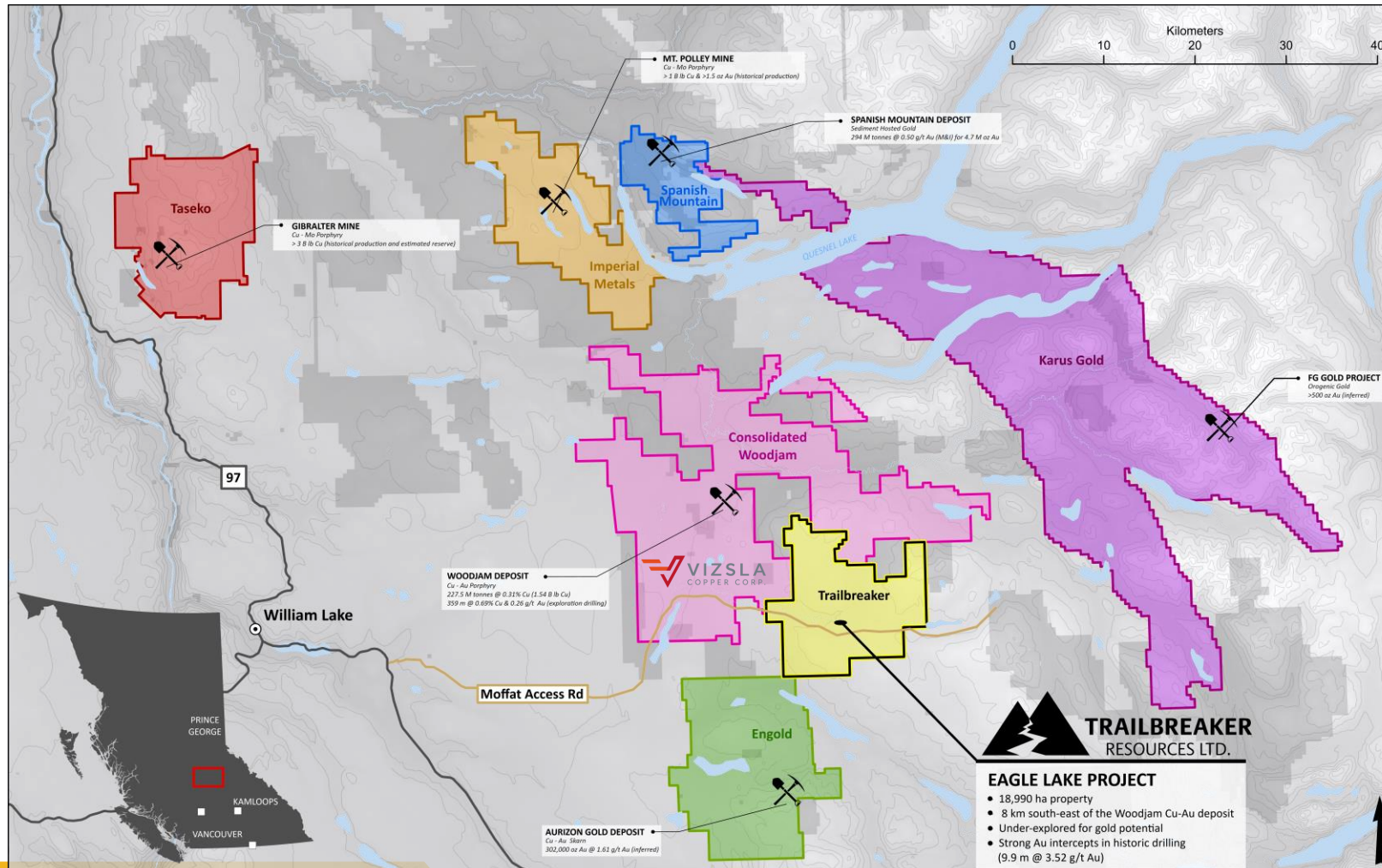
- Newly acquired in 2022
- An early-stage Cu-Au & orogenic gold project
- Located in the Cariboo Mining District, approximately 55 km east of Williams Lake
- 18,990-ha of prospective ground adjacent to the advanced-stage Woodjam Cu-Au project that hosts an inferred mineral resource of 1.5 B lb Cu and 968 Koz Au.





# 03

## EAGLE LAKE PROJECT CARIBOO MINING DISTRICT



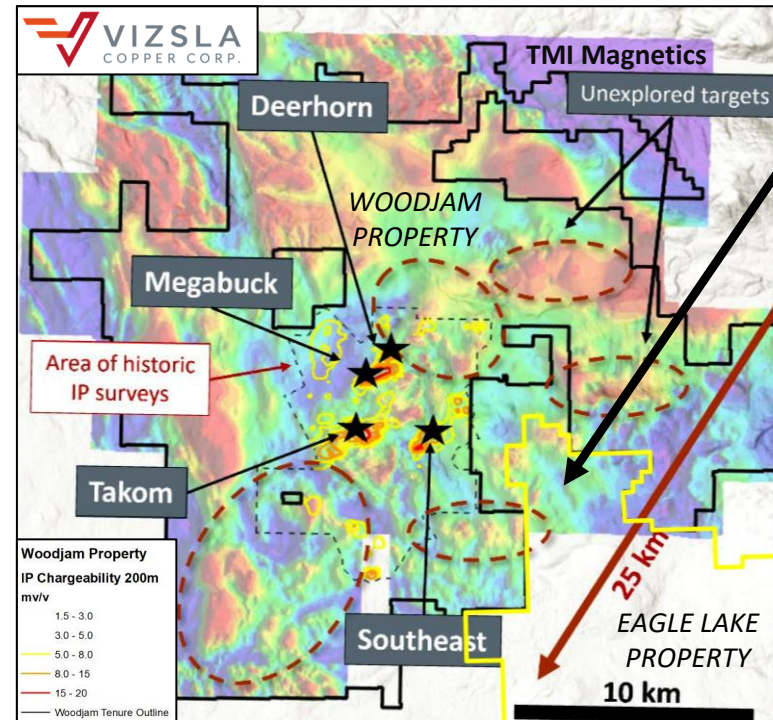
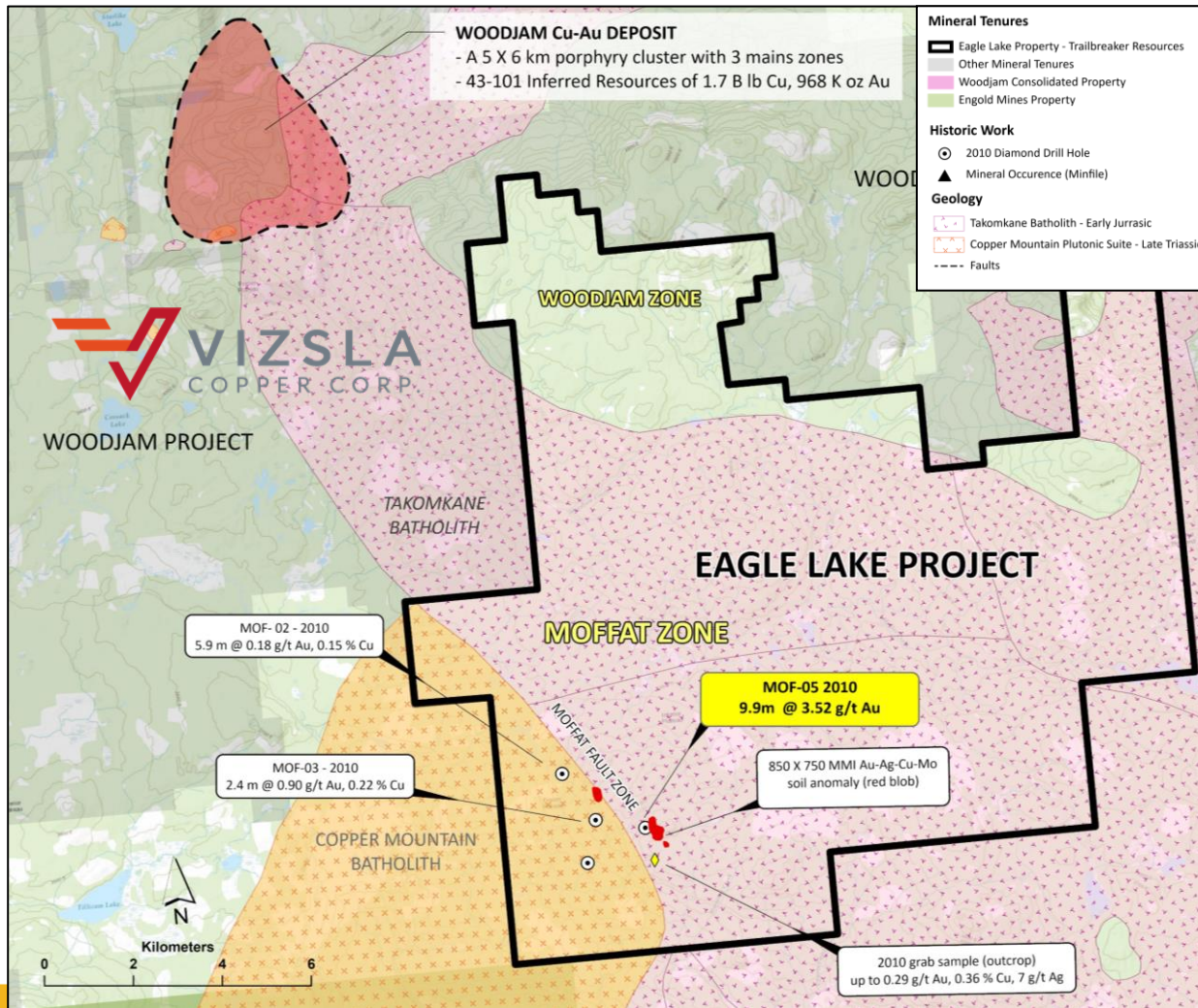
- Situated in the heart of the Cariboo Mining District within the Quesnel tectonic terrane that is host to some of BC's largest historic and currently producing mines and many advanced-stage copper and gold projects.
- Located 55 km east of Williams Lake and easily accessible via an extensive network of well-maintained forest service roads.
- 100%-owned by Trailbreaker Resources with a portion of the claim block subject to 1% NSR to Teck Resources.
- Covers over 180 square kilometers of prospective ground adjacent to the 1.5 B lb Cu & 968 Koz Au Woodjam Cu-Au porphyry project that was recently acquired by Vizsla Copper Corp (Dec 13, 2022).
- Good Cu-Au porphyry and mesothermal gold potential



# 03

## EAGLE LAKE PROJECT THE RIGHT GEOLOGICAL SETTING

- Shares a similar geological setting to the Woodjam Cu-Au porphyry deposit that Vizsla Copper Corp recently purchased and is aggressively exploring in 2023.
- Underlain by Late Triassic to Early Jurassic intrusive rocks of the Takomkane Batholith with minor late Triassic volcanic rocks of the Nicola Group.
- The northwestern block at Eagle Lake covers a similar magnetic signature to the Woodjam deposit and remains underexplored; no IP survey has been conducted in the area.
- Overlooked for its gold potential in the past with most exploration efforts focused on porphyry mineralization. The first and only drilling in 2010 encountered significant gold-only mineralization with a deep intercept of 3.52 g/t Au over 9.9m (commencing at 252m), hosted in quartz stockworks and breccias. This drill hole was never followed-up on and has been coined the Moffat zone .



**High-priority target that remains untested by an IP survey**

Modified from Vizsla Copper Corporate Presentation (January 2023)



# 03

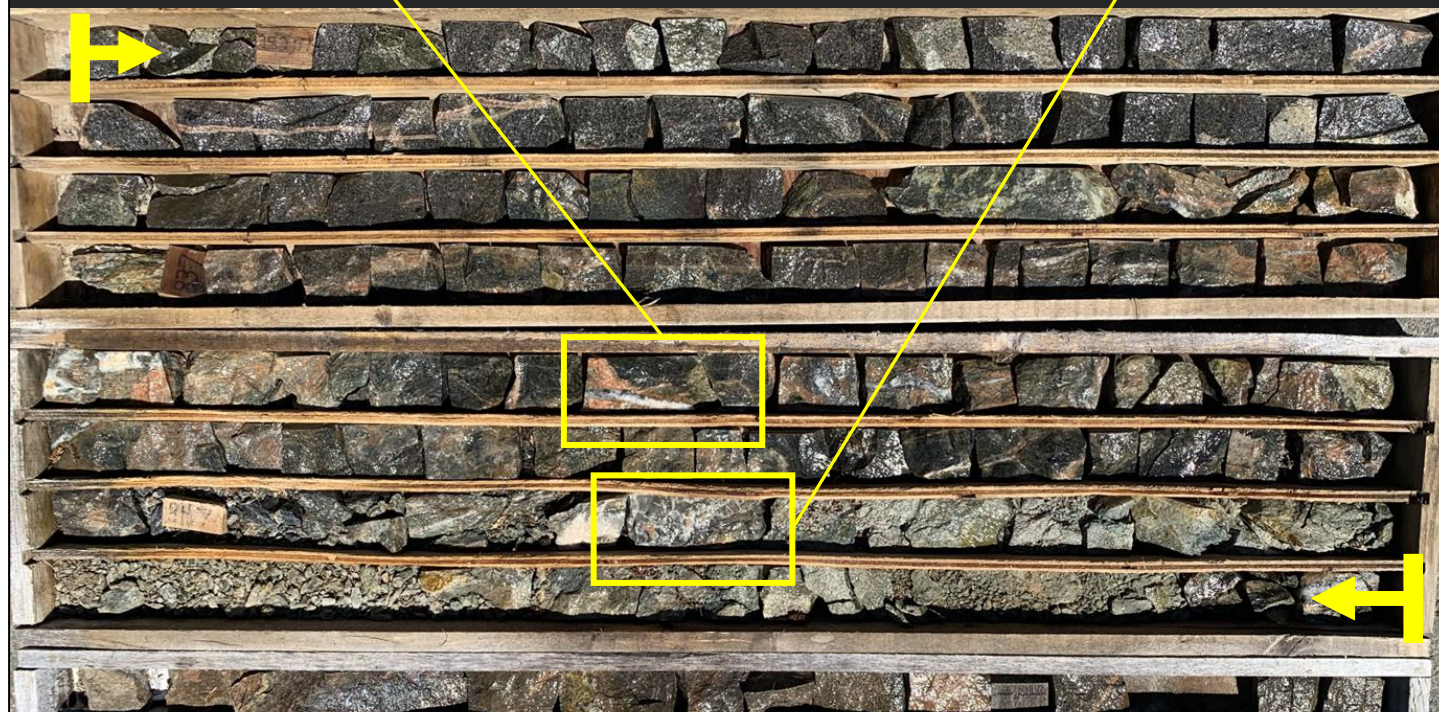
## EAGLE LAKE PROJECT HISTORICAL DRILLING



**MOF2 - 5.9m @ 0.18 g/t Au & 0.15% Cu**  
Monzonite porphyry with fracture-fill and disseminated chalcopyrite and pyrite



**MOF5 (252 m – 261.90 m)**  
3.52 g/t Au over 9.9 meters Incl. 7.04 g/t Au over 3.7 meters

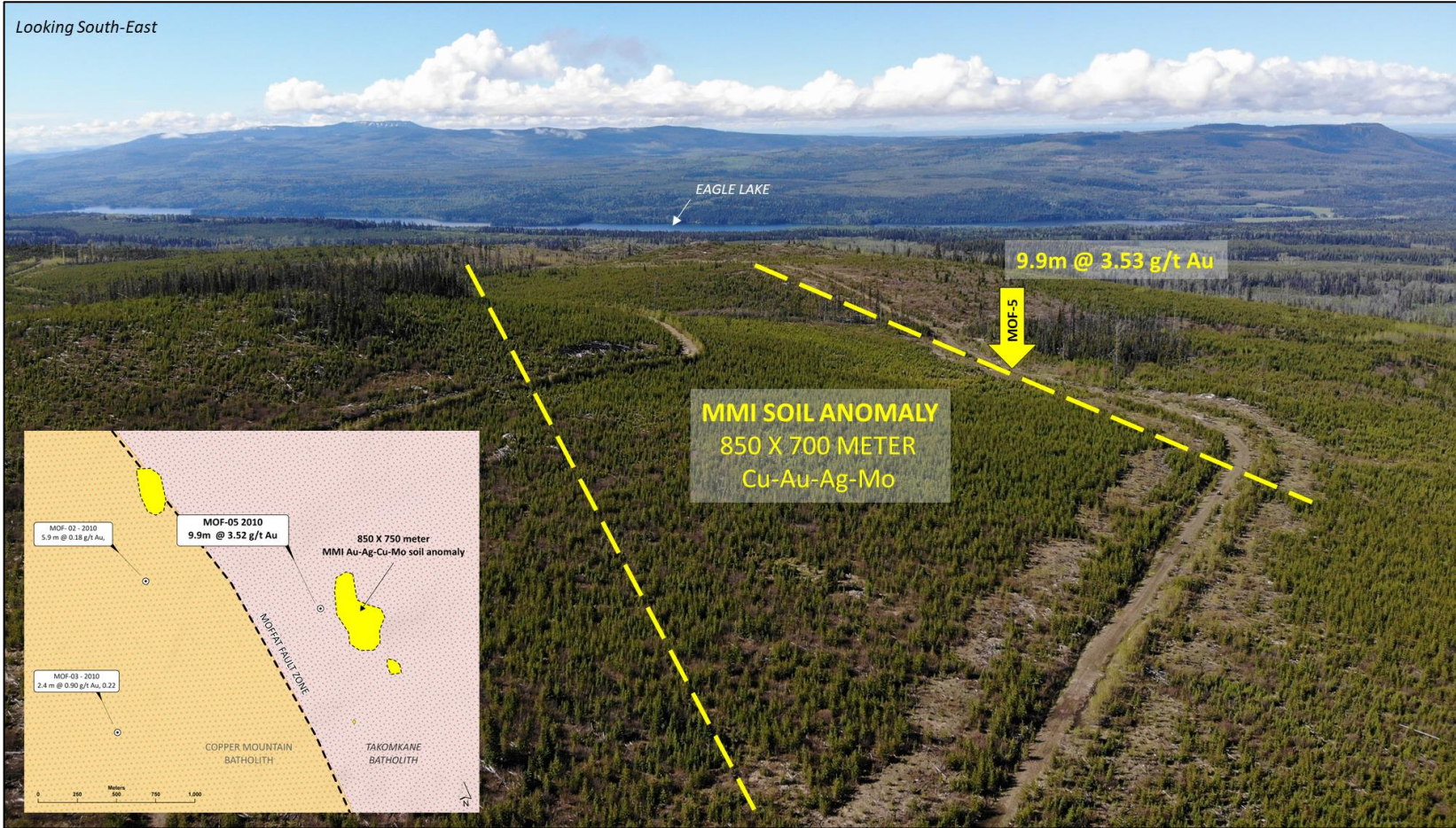


**MOF5 - 9.9m @ 3.52 g/t Au**  
Strongly altered diorite with quartz stockwork, breccia, and disseminated pyrite, hosted in fault zone



# 03

## EAGLE LAKE PROJECT MOFFAT ZONE

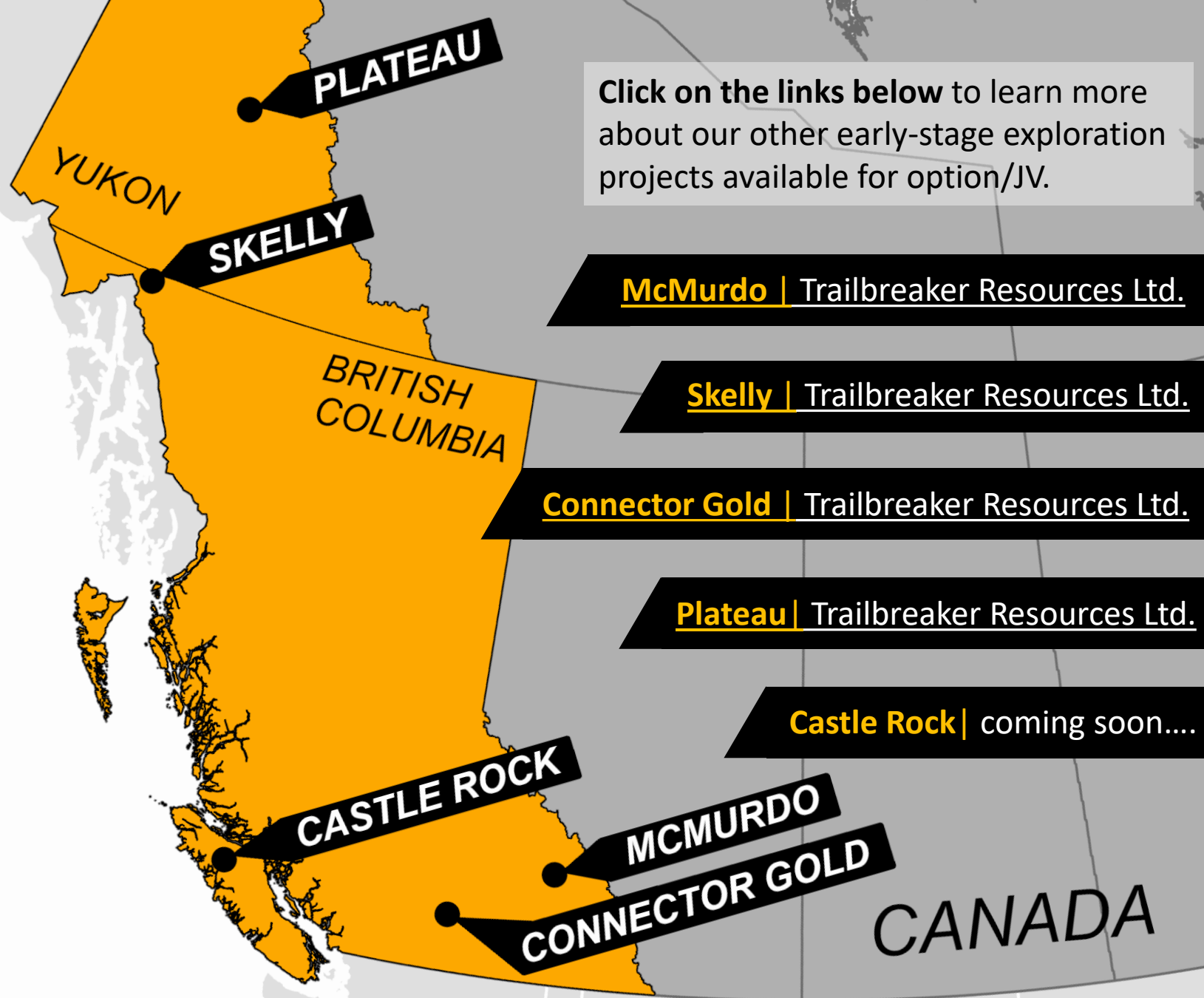


- A 432-sample Mobile Metal Ion (MMI) soil geochemical survey covering a 3 x 3.5-kilometer area identified an **850 x 700 meter Au-Cu-Ag-Mo anomaly** which occurs over MOF-5 and extends east into an area where there is no documented historic drilling.
- This MMI anomaly is believed to represent the surficial expression of the auriferous fault zone associated with the historic drill intersection of 3.52 g/t Au over 9.9 meters commencing at 252 meters depth (2011 drill hole MOF-5).
- Re-logging of the historical core samples revealed abundant hydrothermal breccia, quartz-carbonate-potassium feldspar veining, and fault gouge all associated with the gold-bearing interval of MOF-5. This gold-bearing interval is believed to be hosted in a regional-scale fault structure that parallels the northwest-trending geological contact between the late Triassic Copper Mountain Plutonic Suite and the early Jurassic Takomkane Batholith.



# 04 Other Projects

- We are continually generating new projects via staking and property acquisitions , adding to our portfolio of high quality, early-stage exploration projects.
- Focused on underexplored regions of British Columbia and the Yukon Territory.
- Majority of the projects are 100%-owned properties with no underlying royalties.
- All projects are available for option or joint venture deals.



Click on the links below to learn more about our other early-stage exploration projects available for option/JV.

[McMurdo](#) | [Trailbreaker Resources Ltd.](#)

[Skelly](#) | [Trailbreaker Resources Ltd.](#)

[Connector Gold](#) | [Trailbreaker Resources Ltd.](#)

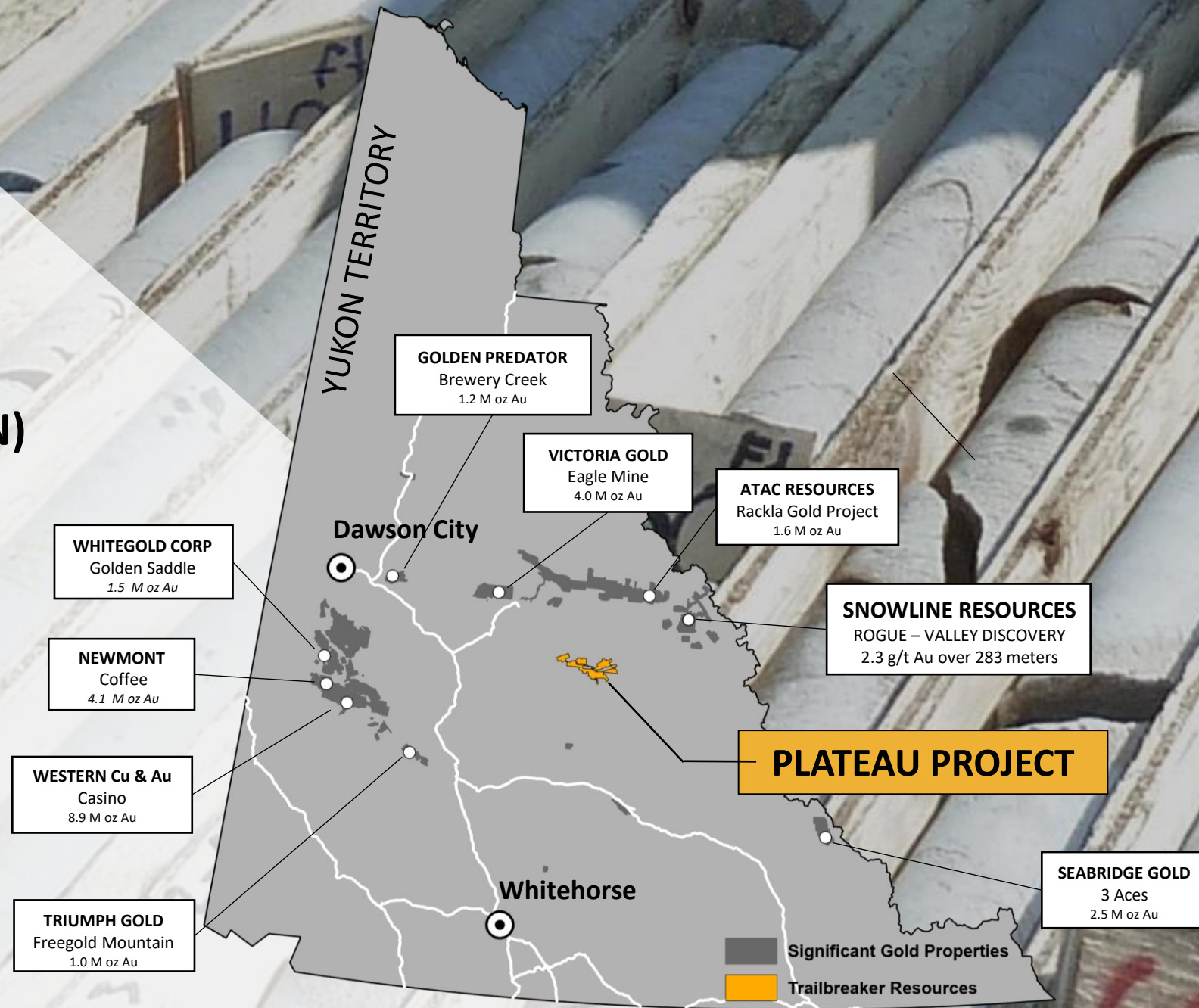
[Plateau](#) | [Trailbreaker Resources Ltd.](#)

[Castle Rock](#) | coming soon...



# 04 PLATEAU PROJECT (YUKON)

Discovered in 2010, the Plateau project represents a district-scale gold system in the Selwyn Basin, 120 km east of Mayo, YT. The property covers 66,200 hectares of prospective ground. Gold mineralization occurs across 50 km of strike within extensive sequences of quartz stockwork and hydrothermal breccias.

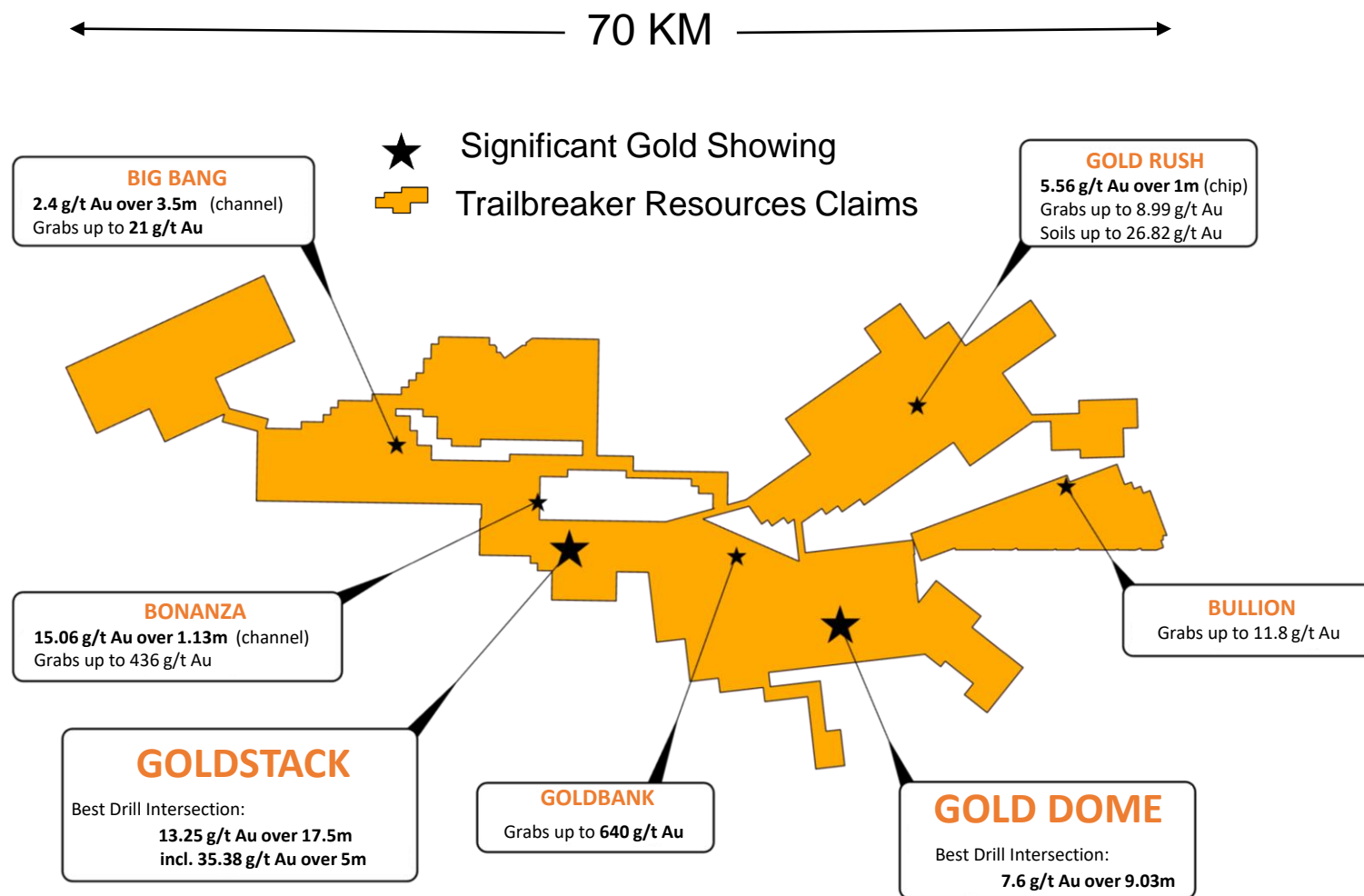




# 04

## PLATEAU PROJECT SUMMARY

- 100%-owned with no underlying royalties or payments.
- Property spans 70 km covering 662 square kilometers.
- Hosts a 50 km trend of high-grade gold discoveries.
- 7 main gold zones discovered to date.
- Widespread coarse visible gold mineralization in hydrothermal quartz breccias and stockwork.
- Significant drill results include **13.25 g/t Au over 17.5m** at the Goldstack Zone and **7.6 g/t Au over 9.03m** at the Gold Dome Zone (18km away).
- Good access with two float plane docks on two separate lakes located on the property.
- Since the discovery in 2010, the property has seen relatively little exploration. From 2012 to 2017 Trailbreaker drilled 68 diamond drill holes totaling 7026 meters. In 2017, an option agreement was reached with Newmont Mining. Under Newmont, an additional 26 holes were drilled in 2018 totaling 7752 meters.





# INVESTMENT SUMMARY

## TRAILBREAKER RESOURCES LTD

### WHY INVEST

- TRACK RECORD OF SUCCESSFUL PROJECT GENERATION
- SEASONED TEAM OF GEOLOGISTS AND PROSPECTORS
- NEW DISCOVERY WITH DISTRICT-SCALE POTENTIAL (**ATSUTLA GOLD**)
- DRILL-READY QUALITY PROJECTS (**EAKIN CREEK**)
- TIGHT SHARE STRUCTURE WITH AN UNDERVALUED MARKET CAP (<\$1.2M)
- WELL POSITIONED FOR GROWTH
- MINING-FRIENDLY BRITISH COLUMBIA AND YUKON TERRITORY
- PRECIOUS METAL FOCUSED

### FUTURE OUTLOOK

- CONTINUE TO ADVANCE THE ATSUTLA GOLD PROJECT
  - COMPLETE A 43-101 TECHNICAL REPORT
  - FIND JV PARTNERSHIP TO COMMENCE THE INAGURAL DRILL CAMPAIGN
- COMMENCE INAGURAL DRILLING AT EAKIN CREEK (PENDING FINANCING)
  - 2000 METER REVERSE CIRCULATION DRILLING (Q2 2023)
- CONTINUE TO GENERATE, MAINTAIN AND SELL HIGH QUALITY, EARLY STAGE EXPLORATION PROJECTS



# FINDING GOLD IN BRITISH COLUMBIA'S LAST FRONTIER

Please contact us for more information:

Daithi Mac Gearailt, *President and CEO*

Tel: (604) 681-1820

[info@trailbreakerresources.com](mailto:info@trailbreakerresources.com)



[www.trailbreakerresources.com](http://www.trailbreakerresources.com)

