

ATSUTLA GOLD PROJECT

*A brand-new, high-grade gold discovery
in British Columbia's northern frontier*

ATSUTLA

WHITEHORSE

B C C A N A D A
VANCOUVER

PROJECT OVERVIEW

- ▲ Located 120 km east of Atlin, BC in an area of BC that has had no previous documented gold exploration
- ▲ Large land package (>40,000 ha) with district-scale potential
- ▲ 100% ownership (no underlying royalties or NSR) on majority of the claim package
- ▲ Situated in a proven and profitable mining district
- ▲ Widespread coarse visible gold in quartz veins with rock grab samples assaying up to 18.38 oz/ton (630 g/t) Au
- ▲ Potential for multiple deposit styles including porphyry Cu-Au, orogenic, epithermal, and intrusion-related

FIVE SIGNIFICANT GOLD ZONES

HIGHLANDS ZONE

OROGENIC / INTRUSION-RELATED / EPITHERMAL

- Widespread coarse visible gold sampled over a 750m x 600m area
- Quartz vein grab samples up to 630 g/t Au and 1,894 g/t Ag
- Hosted in a Jurassic age granite

WILLIE JACK ZONE

OROGENIC / SKARN

- 1.25 km-long gold-in-soil anomaly with values up to 3.77 g/t Au
- Rock grab samples up to 9.9 g/t Au
- Mineralization hosted in quartz veins associated with shear zones in Paleozoic metasediments

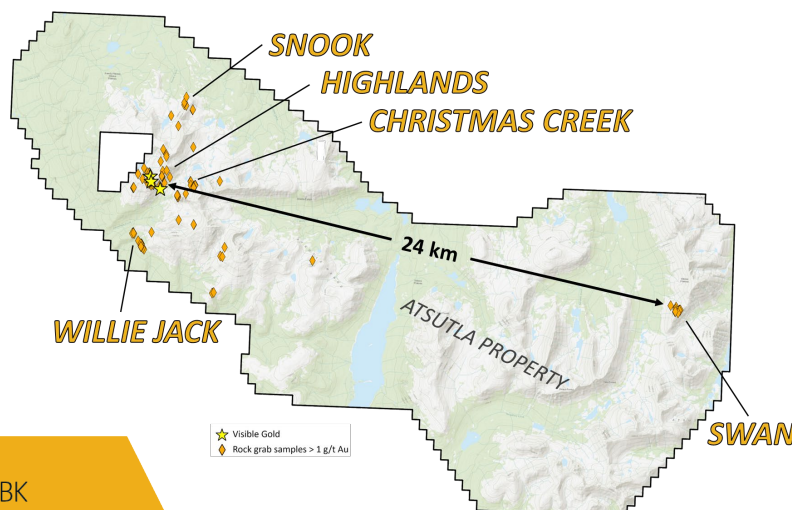
SWAN ZONE

AU-CU-MO PORPHYRY / EPITHERMAL

- 900m x 700m Au-Ag-Cu-Mo-As geochemical soil anomaly with values up to 0.4 g/t Au
- Rock grab samples up to 11.7 g/t Au & 212 g/t Ag
- Hosted in a mid-Cretaceous age granite

DISTRICT SCALE POTENTIAL

- The project is centred over the crustal-scale Teslin – Thibert fault system that marks the division between the Quesnel and Cache Creek tectonic terranes
- Gold mineralization on the property is closely related to the Mesozoic intrusive batholiths that comprise the Atsutla mountain range
- Over 36 kilometers of along-strike prospective geology recently staked and dominantly unexplored



ABOUT TRAILBREAKER RESOURCES TSX.V: TBK

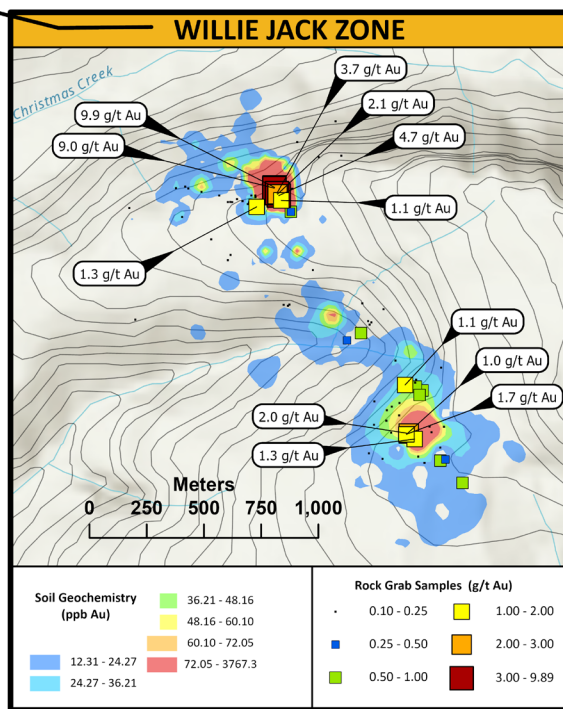
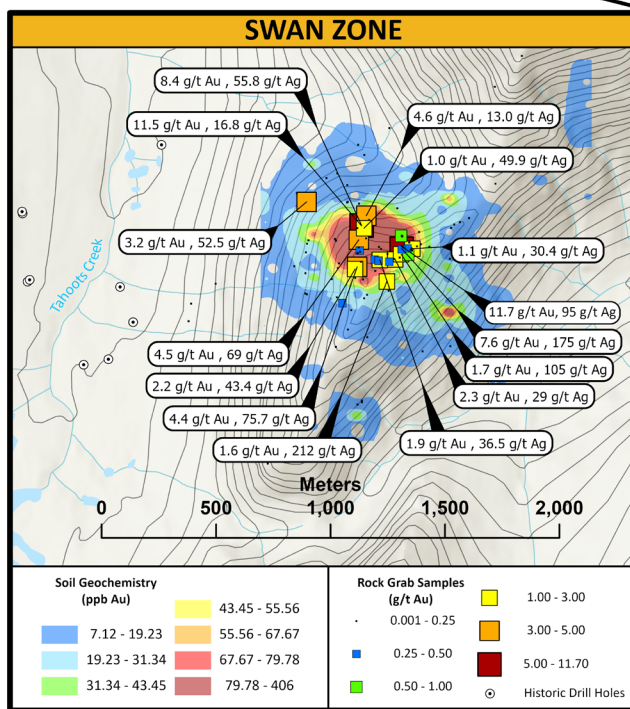
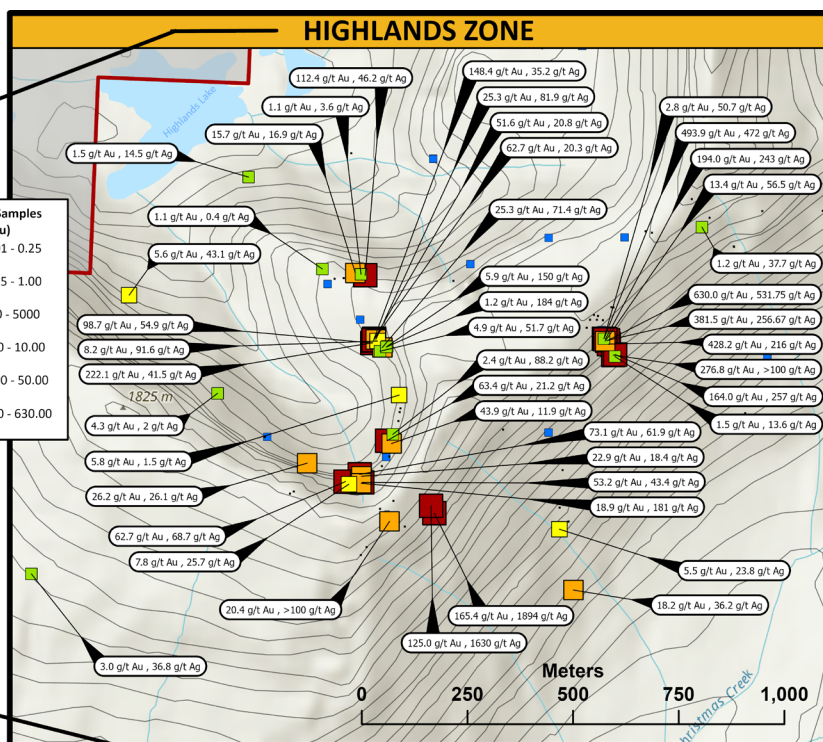
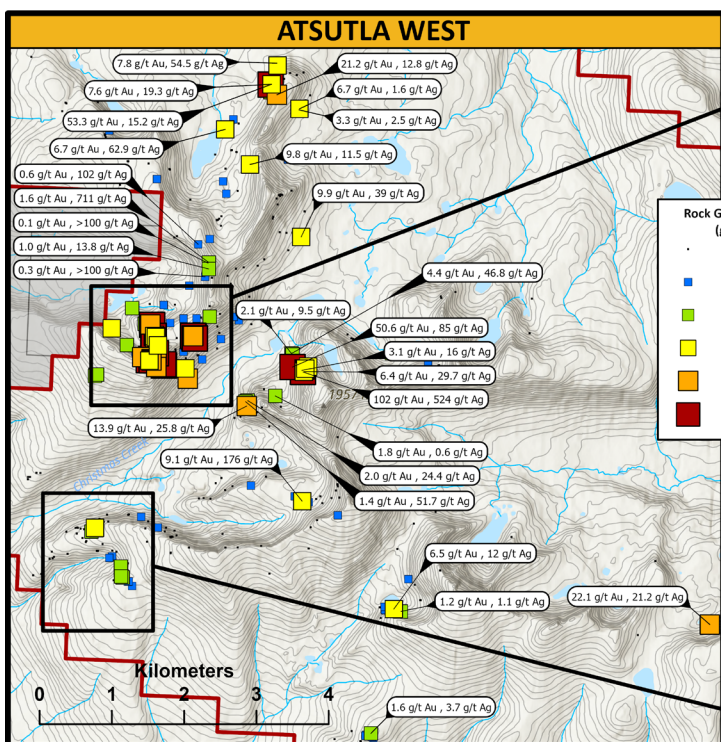
Trailbreaker Resources Ltd. is a Canadian project generator with 100%-ownership on staked properties, focused primarily on mining-friendly British Columbia and Yukon Territory. Visit TrailbreakerResources.com for more information.



info@trailbreakerresources.com



- A **brand-new gold discovery in BC** where no known gold exploration occurred prior to 2020, with the nearest hardrock historical gold occurrence located >50 km away
- In only 2 exploration seasons, widespread high-grade gold has been sampled over 26 km in the Atsutla mountain range with **5 significant gold zones defined**
- Coarse visible gold with **bonanza grades exceeding 18 oz/ton Au**
- Majority of the >40,000 ha, 36 km-long property remains unexplored with untapped potential for a district-scale discovery



JANUARY 2023