



TRAILBREAKER RESOURCES LTD.

Exploring BC's last frontier

CORPORATE PRESENTATION - November 2021

TSX-V: **TBK**

NASDAQ: **APRAF**

FRA: **KCG2**



TRAILBREAKER RESOURCES LTD.

Disclaimer

Forward looking statements contained in this Presentation that are not historical facts are "forward-looking information" or "forward-looking statements" (collectively, "Forward-Looking Information") within the meaning of applicable Canadian securities legislation and the United States Private Securities Litigation Reform Act of 1995. Forward-Looking Information includes, but is not limited to, disclosure regarding possible events, conditions or financial performance that is based on assumptions about future economic conditions and courses of action; expectations regarding future exploration and drilling programs; and receipt of related permitting. In certain cases, Forward-Looking Information can be identified by the use of words and phrases such as "anticipates", "expects", "understanding", "has agreed to" or variations of such words and phrases or statements that certain actions, events or results "would", "occur" or "be achieved". Although Trailbreaker has attempted to identify important factors that could affect Trailbreaker and may cause actual actions, events or results to differ materially from those described in Forward-Looking Information, there may be other factors that cause actions, events or results not to be as anticipated, estimated or intended. In making the forward-looking statements in this Presentation, if any, Trailbreaker has applied several material assumptions, including the assumption that general business and economic conditions will not change in a materially adverse manner. There can be no assurance that Forward-Looking Information will prove to be accurate, as actual results and future events could differ materially from those anticipated in such statements. Accordingly, readers should not place undue reliance on Forward-Looking Information. Except as required by law, Trailbreaker does not assume any obligation to release publicly any revisions to Forward-Looking Information contained in this Presentation to reflect events or circumstances after the date hereof or to reflect the occurrence of unanticipated events – This Presentation is not for redistribution.

Trailbreaker Resources Ltd.

is a project generator and explorer focused primarily in mining-friendly British Columbia and Yukon Territory, Canada. We are committed to continuous exploration and research, allowing us to maintain a portfolio of quality mineral properties which in turn provides value for our shareholders.

Our objective is to identify underexplored regions in North America that have been overlooked for gold mineralization and, with the use of the latest advanced scientific methods, explore, discover, and advance gold projects.

We currently have interest in 7 properties throughout the Yukon Territory and British Columbia, Canada.

The company is currently advancing it's newest asset, the Atsutla Gold project; a newly discovered gold prospect in northwestern British Columbia, 120 km east of Atlin BC.

Management has a track record of successful project generation, effective grassroots exploration, and lasting community relations. We plan to continue adding to our portfolio and creating value for everyone.



ABOUT US



Daithi Mac Gearailt | President, CEO and Director

Lucy Zhang | CFO and Director

Ewan Webster | Director

John A. Kuehne | Director

Frank Wheatley | Director

EXPERIENCED TEAM

Led by CEO Daithi Mac Gearailt, the team has been working together for over a decade with many new gold discoveries across the Yukon Territory and British Columbia. The team includes some of the industry's best consulting boots-on-the-ground prospectors and geologists that help turn conceptual exploration targets into discoveries

CAPITAL STRUCTURE

*As of September 1st
2021- Unaudited*

Shares Issued & Outstanding	12,741,750
Fully Diluted	17,728,850
Options (\$0.24 – \$2.01)	1,762,500
Warrants ((\$0.39 – \$0.49)	3,224,600
52-Week Range	\$0.20 – \$0.45

Tight share structure with **no debt**

Trailbreaker Resources maintains a **strategic investment** in Golden Sky Minerals (TSX: AUEN)



TRAILBREAKER
RESOURCES LTD.

TRAILBREAKER TIMELINE

Q4 2019

Corporate restructuring with share consolidation & appointment of new CEO, Daithi Mac Gearailt

Q3 2020

2020 first-pass exploration program commenced with high-grade gold discovered at the Willie Jack, Skelly, and McMurdo properties

Q1 2021

Company name change and financing for 2021 exploration programs

Q2 2020

Project generation leads to staking of 3 properties in BC: Willie Jack, Skelly, and McMurdo

Q4 2020

Atsutla Gold Project is expanded and becomes the companies flagship property

Q3 2021

Continued surface exploration at the Atsutla Gold Project leads to additional high-grade gold discoveries

OUR PROJECTS

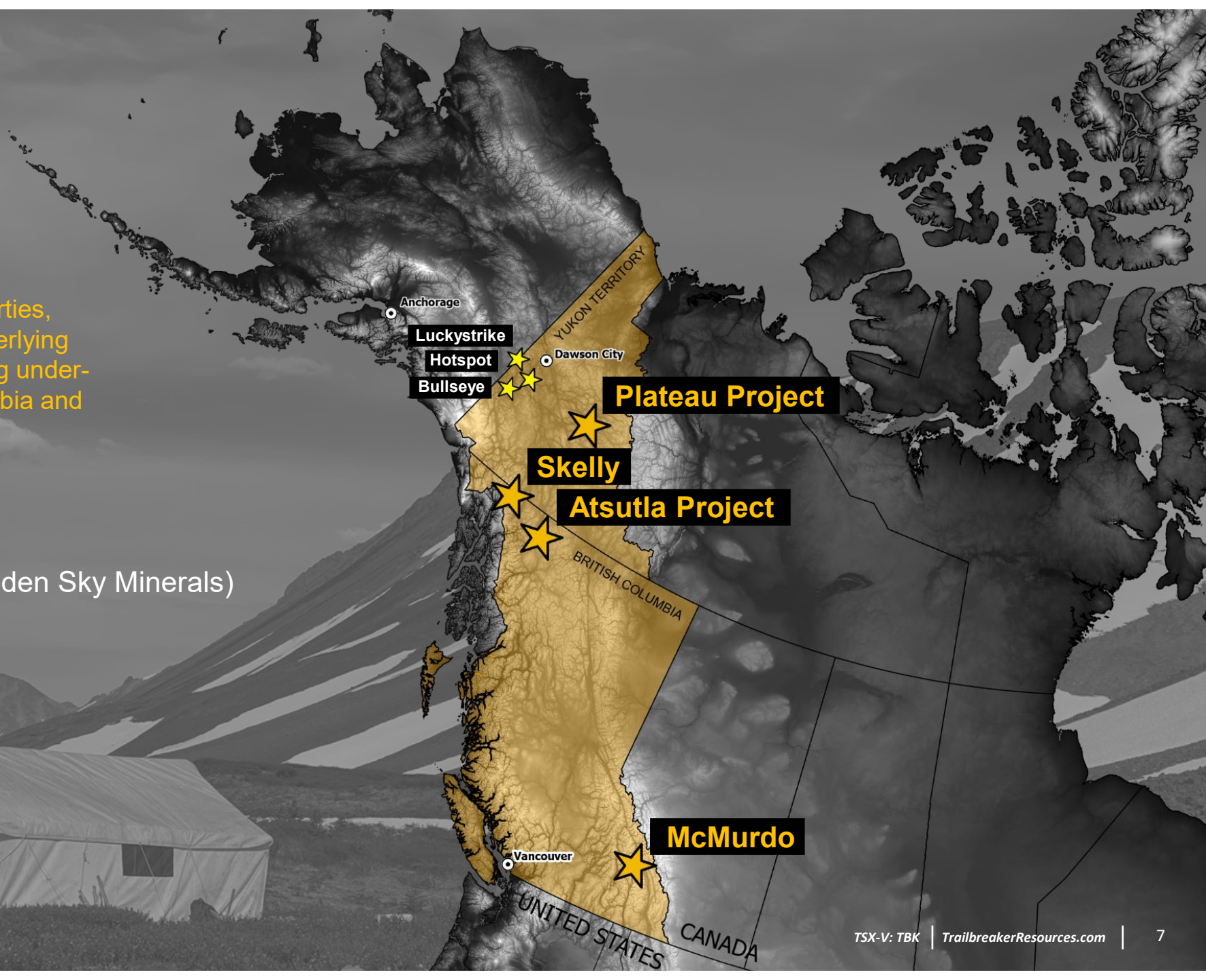
We generate and stake our own properties, maintaining 100% interest with no underlying royalties. We are focused on evaluating under-explored tracts of land in British Columbia and the Yukon Territory.



100% Interest



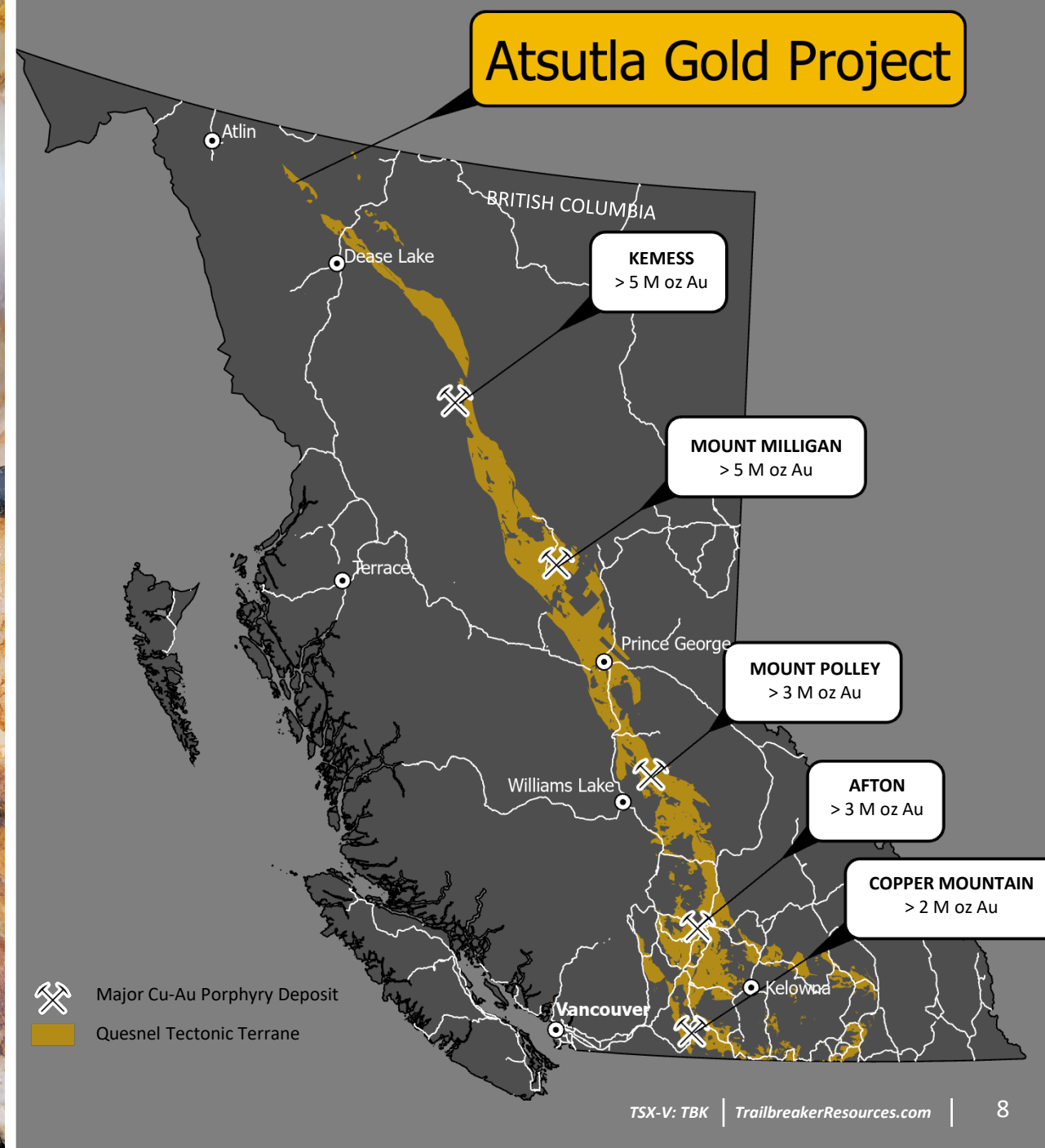
Strategic Investment (Golden Sky Minerals)



ATSUTLA GOLD PROJECT

A brand-new high-grade gold discovery in British Columbia's last frontier

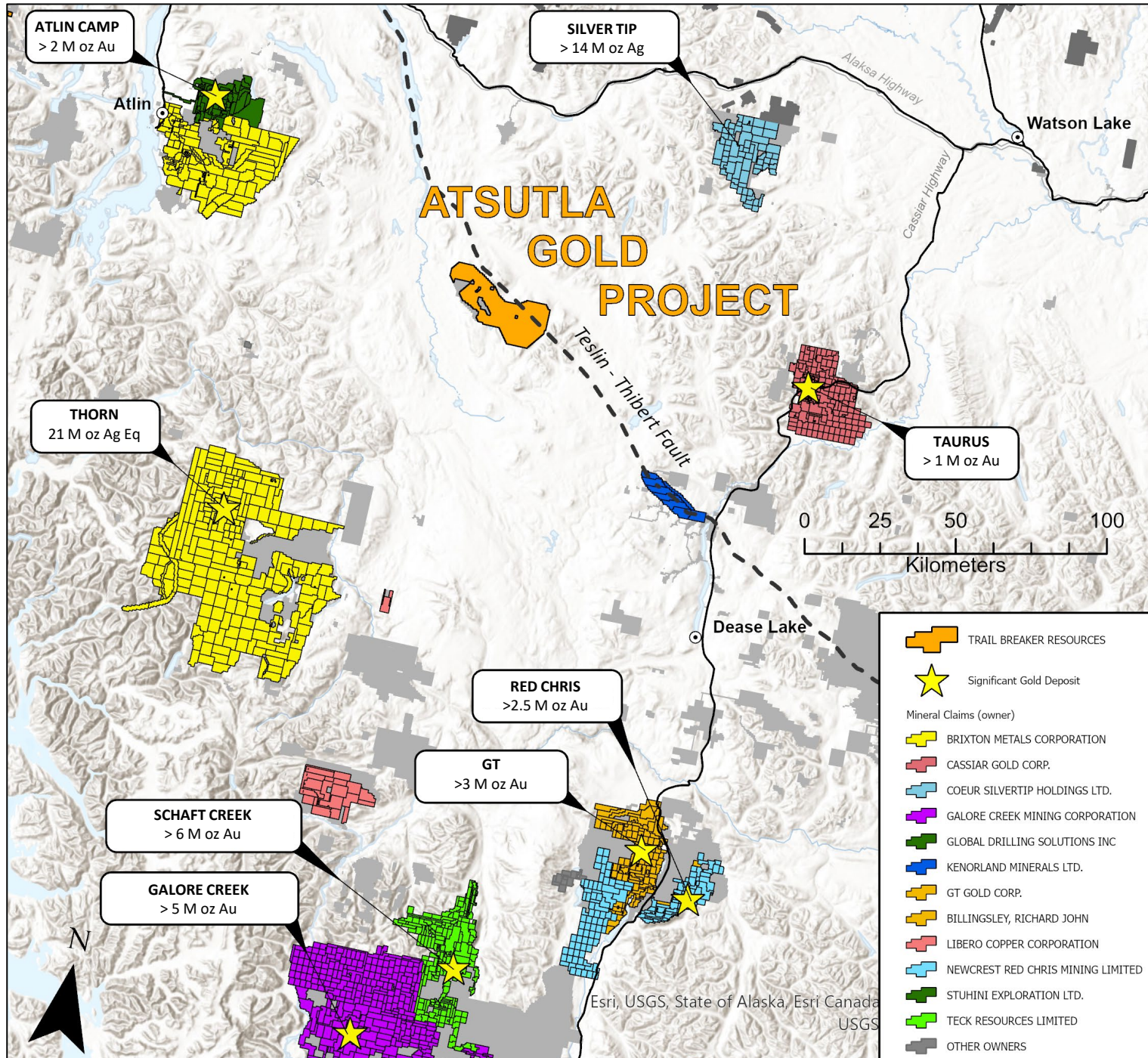
- 120 km east of Atlin, BC
- 37,727 ha (> 377 square kilometers)
- 100% ownership (no underlying royalties or NSR)
- Covers a remote underexplored region of BC that has seen no modern day exploration for gold mineralization
- Briefly explored for Cu-Mo mineralization in the early 1970s but no geochemical analysis for gold
- Exploration Model: Cu-Au Porphyry / Orogenic Gold Vein / Intrusion Related
- The Atsutla project is a brand new greenfields project where proof of concept has returned samples assaying up to **18.38 oz/ton Au** and **55.25 oz/ton Ag** in an area with no previously known gold mineralization



Ideally Situated

An underexplored region in BC with district-scale potential

- In 2021, Trailbreaker began its first-pass evaluation program on its newly staked Atsutla property; as well as follow up on initial high-grade quartz vein float sampled in 2020
- Four significant gold zones have now been delineated over 26 kilometers with widespread high-grade gold in quartz vein float, subcrop and outcrop
- The Project straddles the Teslin-Thibert Fault system with Cache Creek Terrane juxtaposed against the Quesnel Terrane
 - Deep seated terrane-bounding faults are ideal structures for acting as conduits for mineralized fluids
 - These structures often control multi-stage hydrothermal events that result in clusters of ore deposits, which are often referred to as “camps”
- With the Project encompassing similar stratigraphy and structures as the analogous Atlin Gold Camp (>2 M oz Au), there is excellent potential for discovering Northern BC's next Gold Camp
- Potential for a wide variety of gold deposits including **porphyry and orogenic vein systems**



KEY POINTS

ATSUTLA GOLD PROJECT

A brand-new gold **discovery** in an underexplored region of BC

High-Grade Gold

- Widespread high-grade rock grab samples up to **18.38 oz/ton Au**
- **Visible Gold** sampled over a 750 meter extent

District Scale Potential

- Large land package covering ~ 36km of along-strike prospective geology (> 37,000 ha or 377 square kilometers)
- **4 significant gold zones** have been defined over 26 kilometers in just 1 field season
 - **Highlands - Christmas Creek - Willie Jack - Swan**
- Potential for multiple deposit styles (porphyry, orogenic and intrusion-related)

Excellent Exploration Upside

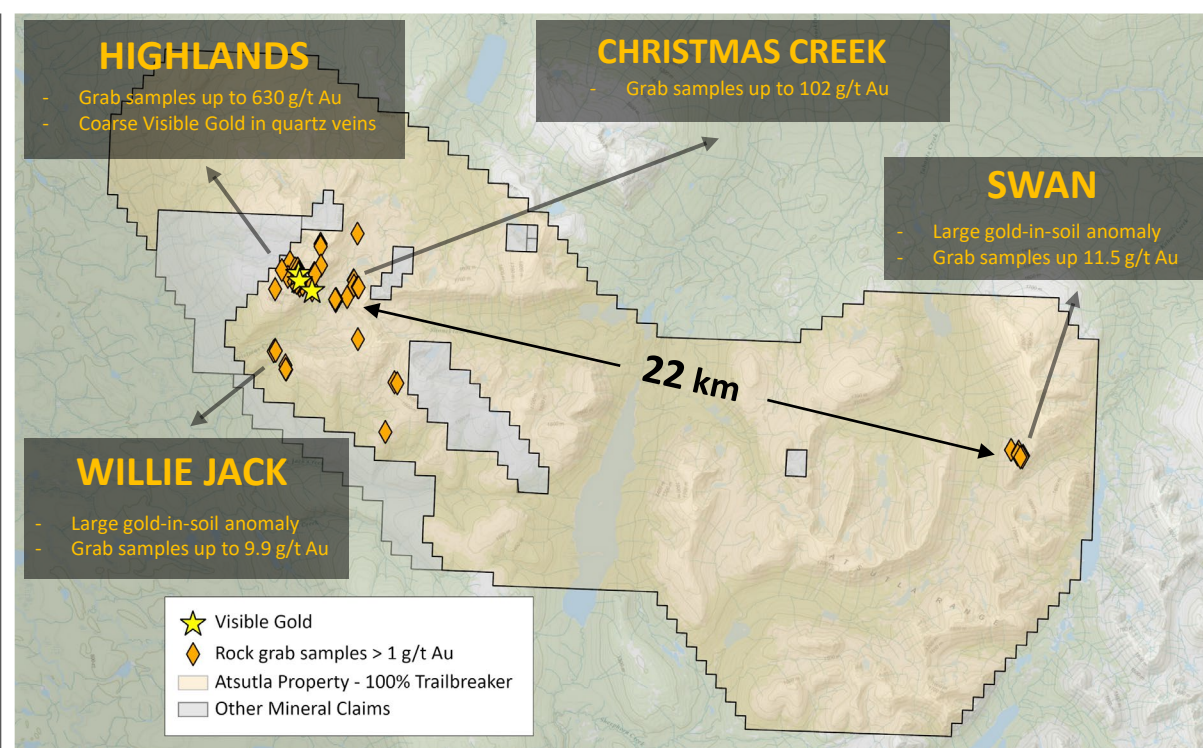
- Majority of the property remains unexplored or never before explored for gold mineralization

The Right Geological Setting

- Located along a crustal-scale fault system in a region endowed with placer gold and hosting multiple phases of Mesozoic intrusive rocks
- Several porphyry Cu-Au prospects

The Right Jurisdiction

- British Columbia is a proven and profitable mining jurisdiction



ATSUTLA GOLD PROJECT

A widespread high-grade gold discovery

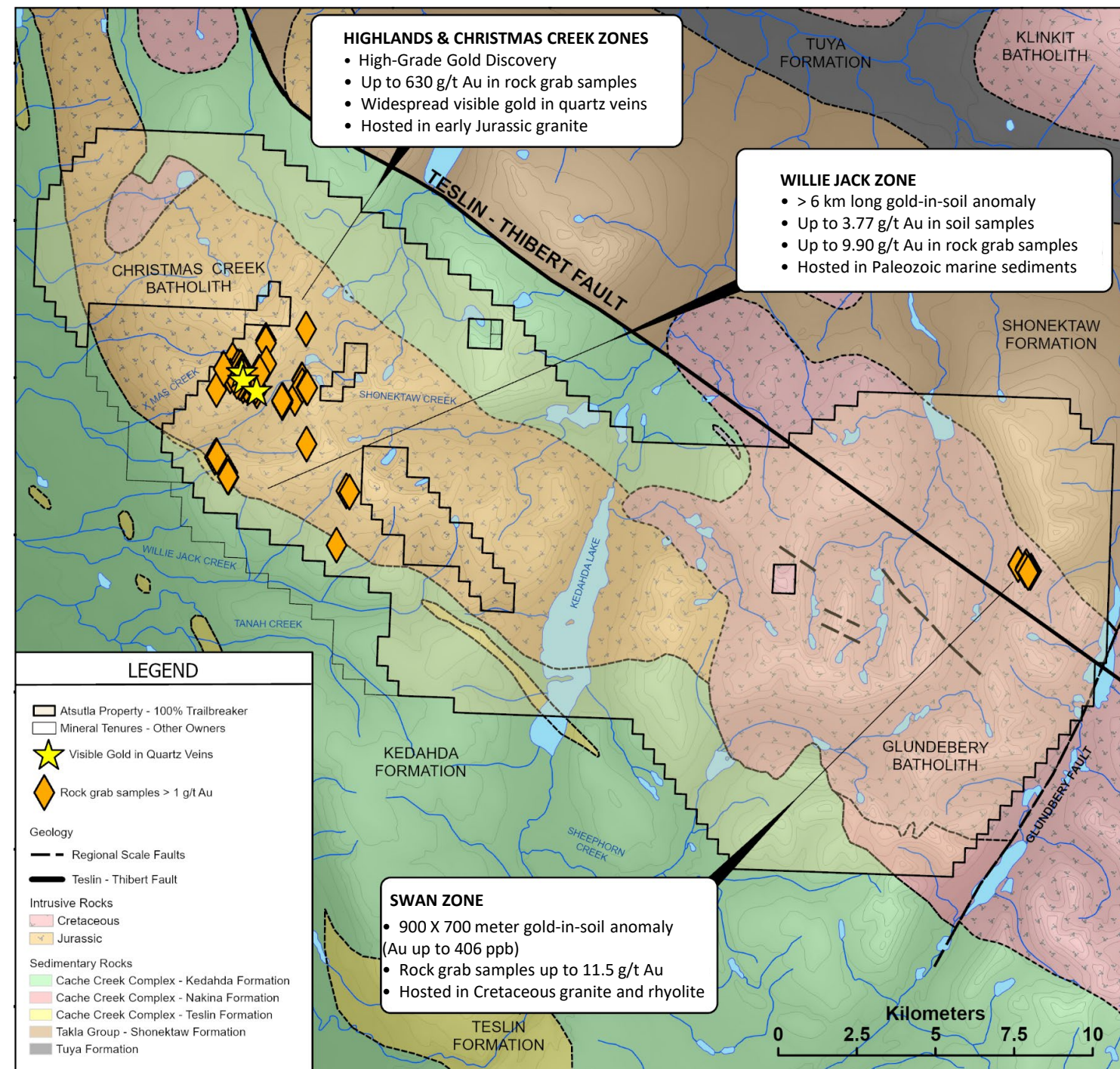


ATSUTLA GOLD PROJECT

Excellent Exploration Potential

A highly prospective geological setting

- Situated along the regional crustal scale, northwest trending Teslin – Thibert strike-slip fault system that juxtaposes and divides the Cache Creek and Quesnel terranes
- Covers Mesozoic age plutons emplaced in sediments of the Cache Creek terrane and volcanics of the Quesnel terrane
- The intrusive suites are strongly magnetic and associated with elevated concentrations of Au, Sb, As, Cu and Mo in stream sediments with placer gold-bearing creeks
- 4 significant gold zones have been defined over a 26 km area within the Atsutla Mountain Range, with assays up to 18.38 oz/ton. The majority of the property remains unexplored



The Geological Model

Orogenic Gold Veins and Gold-Copper Porphyry

- Host Rocks
 - Mid-Jurassic Christmas Creek Stock and the Late Cretaceous Glundebery Batholith suggests a long-lived hydrothermal system
 - Veining and mineralization typically forms within the intrusive rocks
 - Potential source and/or host rocks for gold-bearing hydrothermal fluids
- Structure & Mineralization Style
 - Flexure in crustal-scale Teslin-Thibert fault likely acted as a principal control for the emplacement of mineralized intrusions
 - High-grade Au hosted in quartz veins
 - Mineralization occurs in stockworks, massive quartz veins, and in breccia zones
 - Mineral correlations of Au-Sb-As (Au-bearing quartz veins) and Cu-As-Mo (Mo-bearing quartz veins and disseminated mineralization) suggest mineralization may be intrusion-related
- Alteration
 - Mineralized quartz veins are hosted in a propylitic altered (chlorite and epidote) granite – granodiorite which may suggest an underlying porphyry deposit deeper within the hydrothermal system

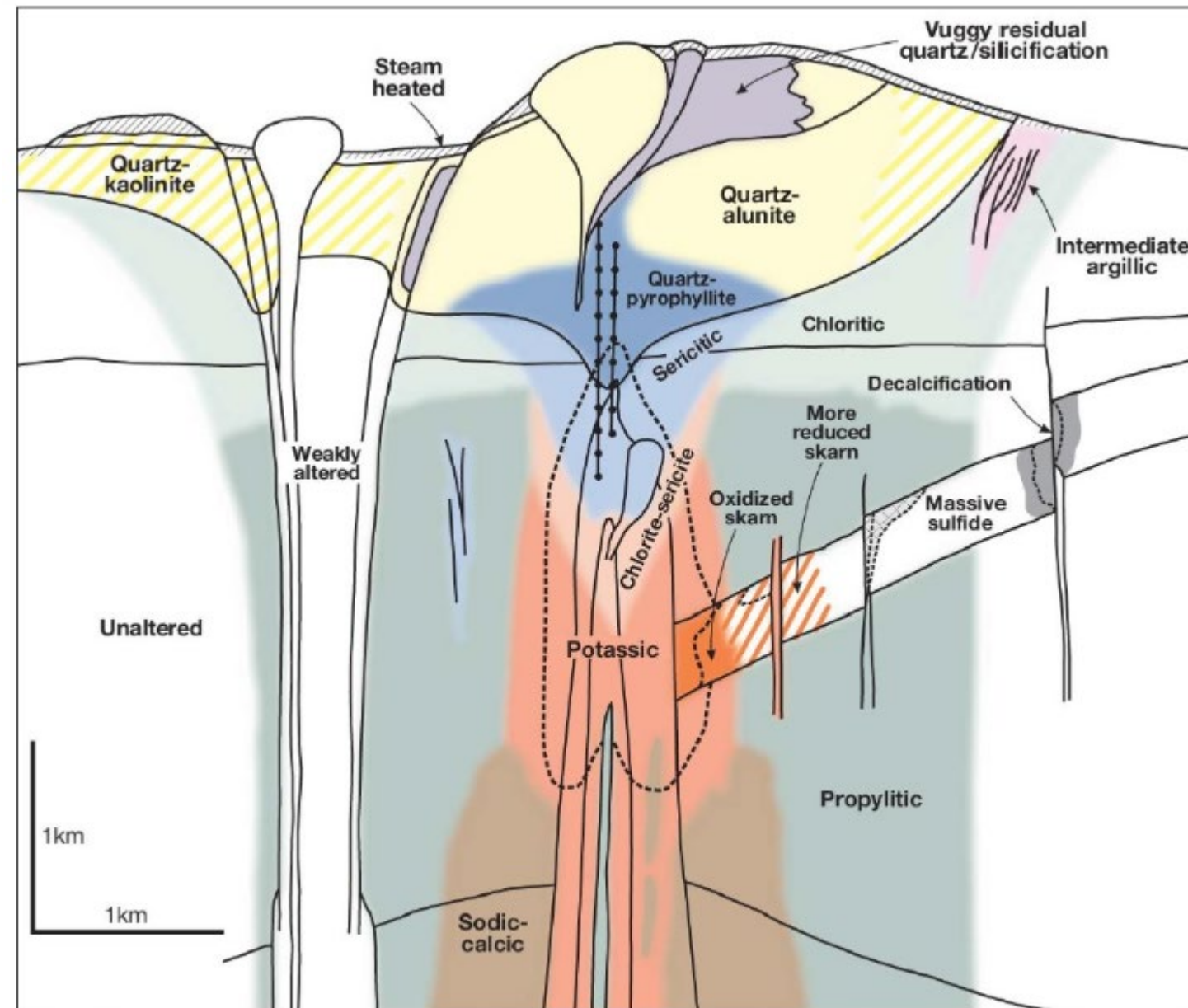
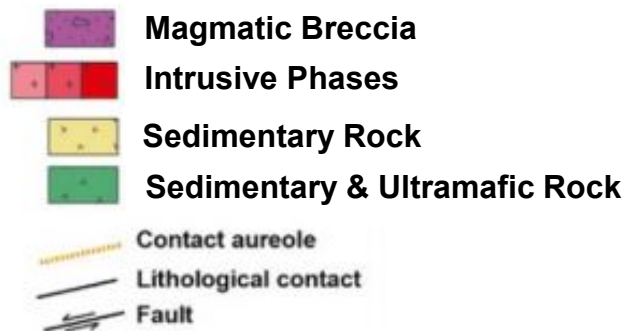
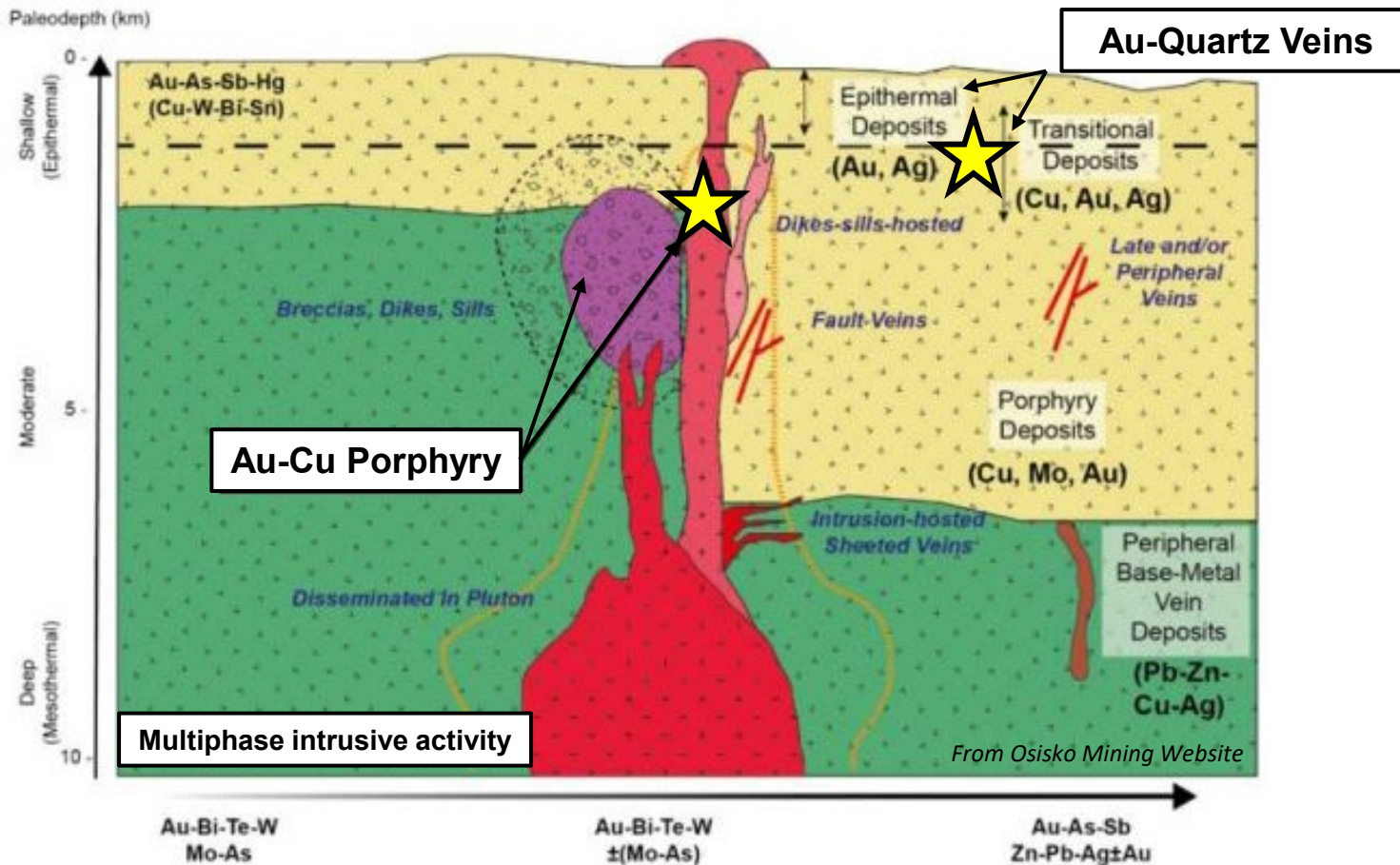
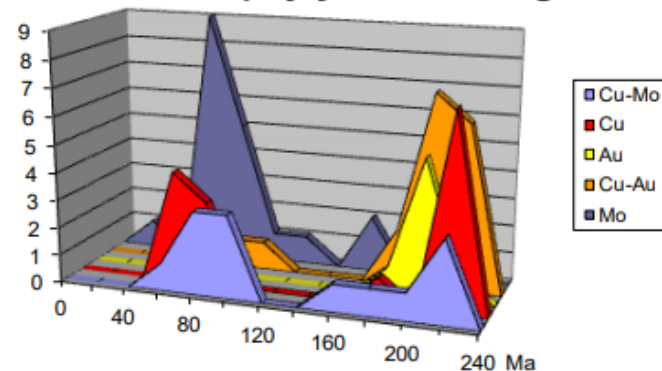


Figure 8-1: Generalized alteration-mineralization zoning pattern for porphyry copper deposit (Holiday and Cooke, 2007) after Sillitoe and Thompson (2006)



BC Porphyry Mineralizing Events



From BC Ministry of Energy and Mines

The Geological Model

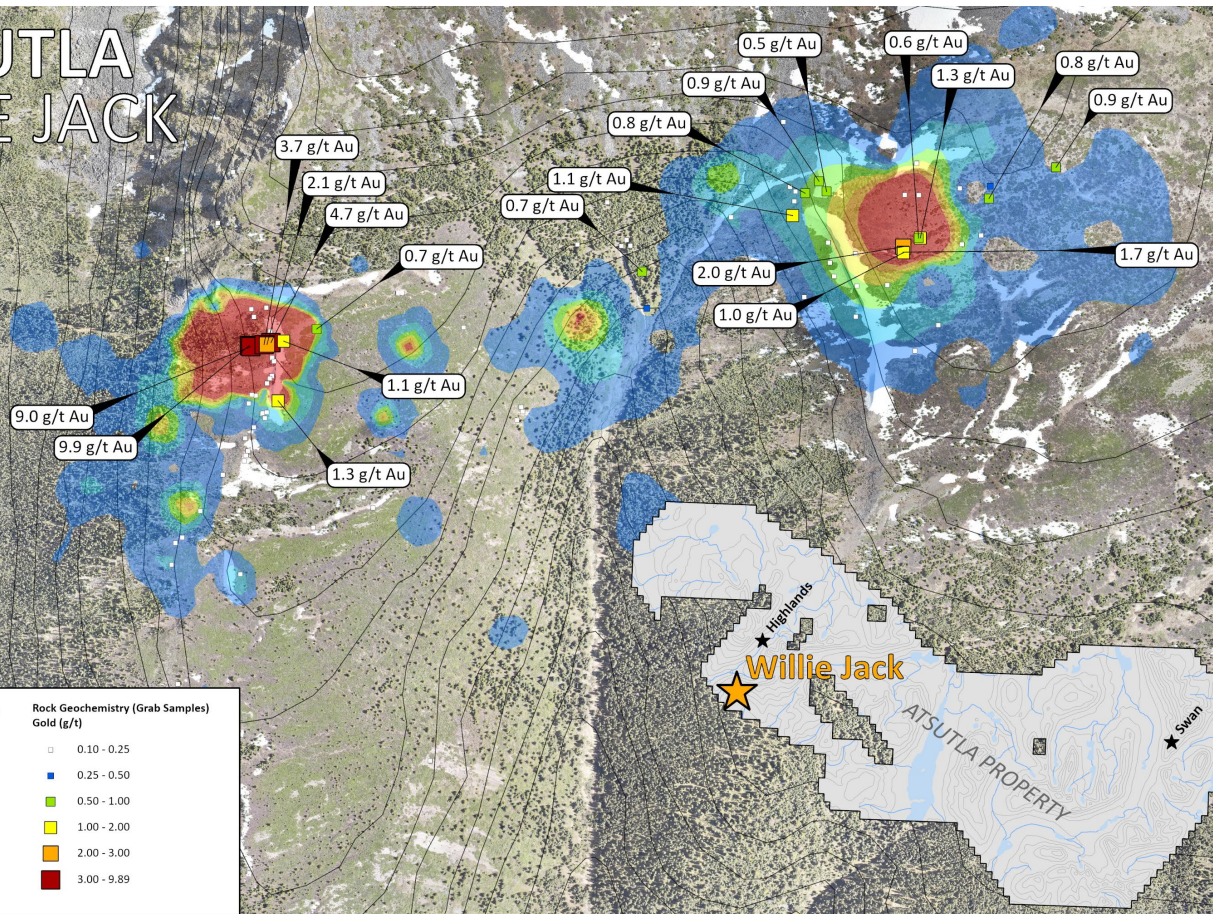
Orogenic Gold Veins and Gold-Copper Porphyry

- Important Time Constraints
 - 2 main episodes of BC porphyry formation; Late Triassic-Early Jurassic and Late Cretaceous to Eocene
 - The Atsutla Project encompasses a region that was active during both episodes and may be the upper levels of a Au-Cu porphyry system
- Late Triassic-Mid Jurassic Porphyry Deposits in BC
 - Copper Mountain (>5 M oz Au)
 - Afton (>3 M oz Au)
 - Mount Polley (>3 M oz Au)
 - Mount Milligan (>5 M oz Au)
 - Kemess (>5 M oz Au)
- Orogenic Vein Deposits in BC (potential Late Cretaceous-Eocene pluton sources)
 - Bralorne Gold Camp (>4.2 M oz Au)
 - Atlin Gold Camp (>2 M oz Au)
- Late Cretaceous-Eocene Porphyry Deposits in BC
 - Huckleberry (88.9 Mt @ 0.46% Cu & 0.02 g/t Au)
 - Prosperity (831 Mt @ 0.23% Cu & 0.41 g/t Au)
 - Morrison (224.2 Mt @ 0.6% Cu & 0.16 g/t Au)
 - Bell Copper (77.1 Mt @ 0.39% Cu & 0.16 g/t Au)

ATSUTLA GOLD PROJECT

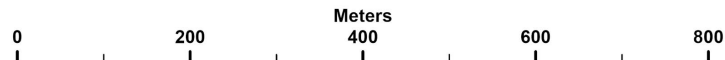
EXPLORATION HIGHLIGHTS

ATSUTLA WILLIE JACK



TRAILBREAKER
RESOURCES LTD.

Scale: 1:5,000



ATSUTLA GOLD PROJECT



TRAILBREAKER
RESOURCES LTD.

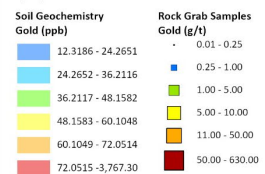
HIGHLANDS

Highlands

Willie Jack

CHRISTMAS CREEK

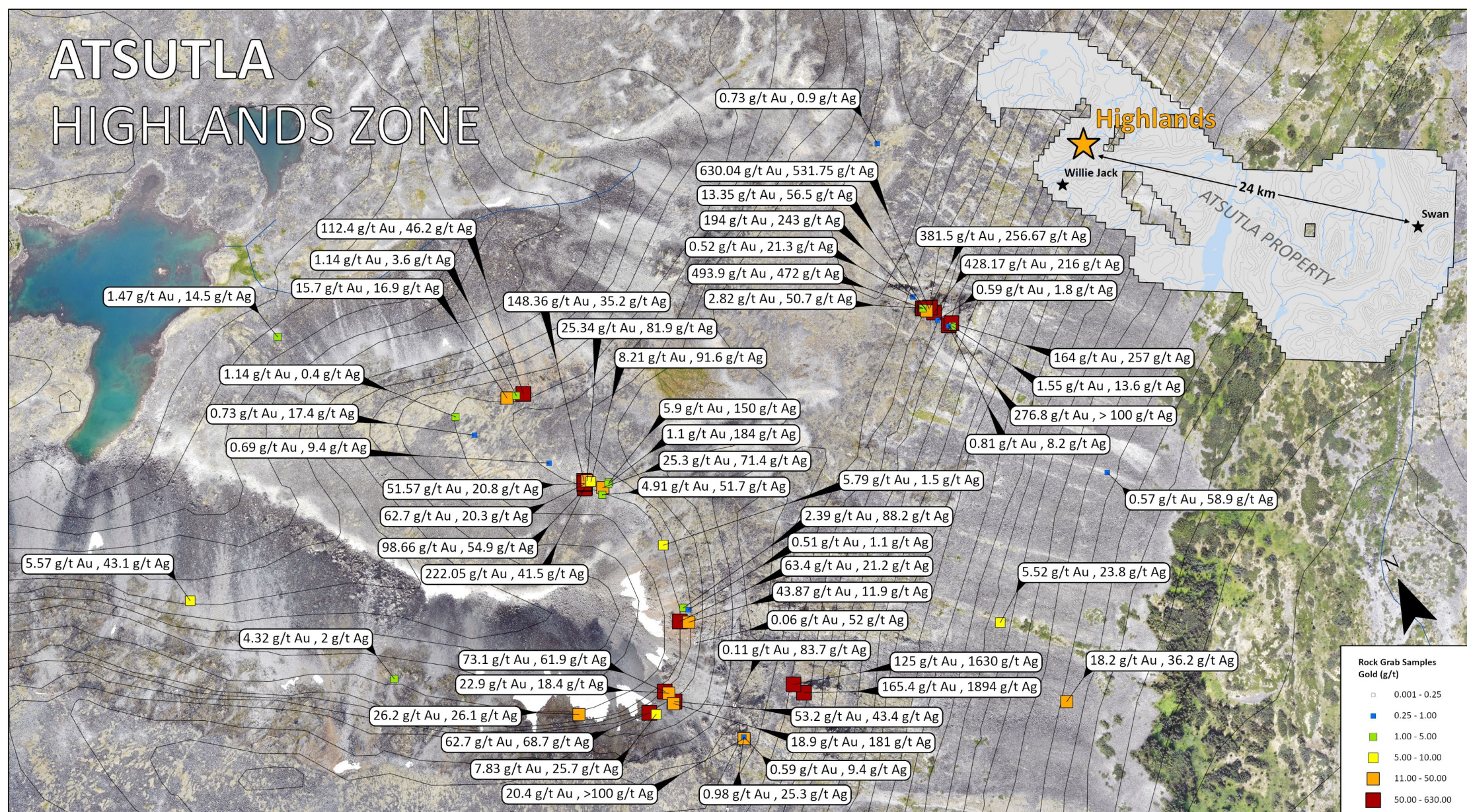
WILLIE JACK



Kilometers



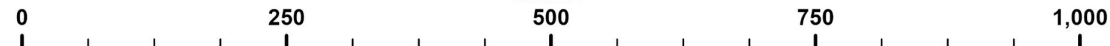
ATSUTLA HIGHLANDS ZONE



TRAILBREAKER
RESOURCES LTD.

Scale: 1:5,000

Meters



HIGHLANDS ZONE

COARSE
VISIBLE
GOLD

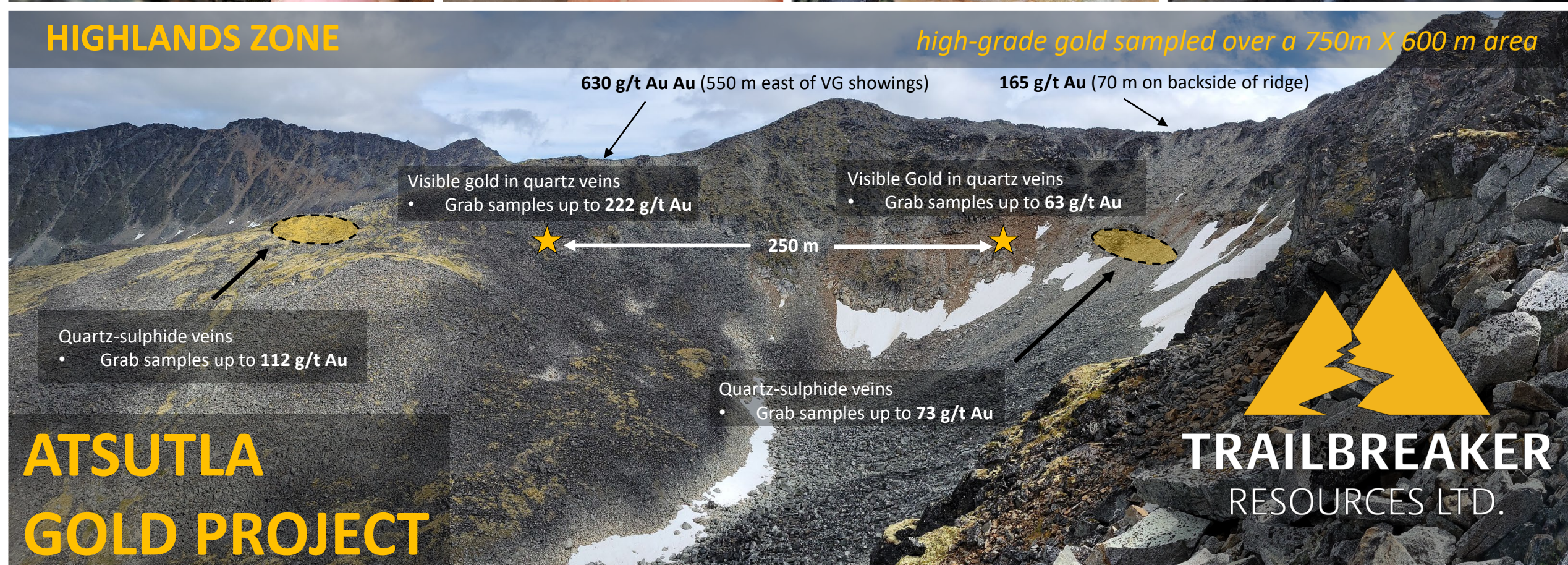
TRAILBREAKER
RESOURCES LTD.

Visible gold-bearing quartz veins in talus
• Grab samples up to **222 g/t Au**



HIGHLANDS ZONE

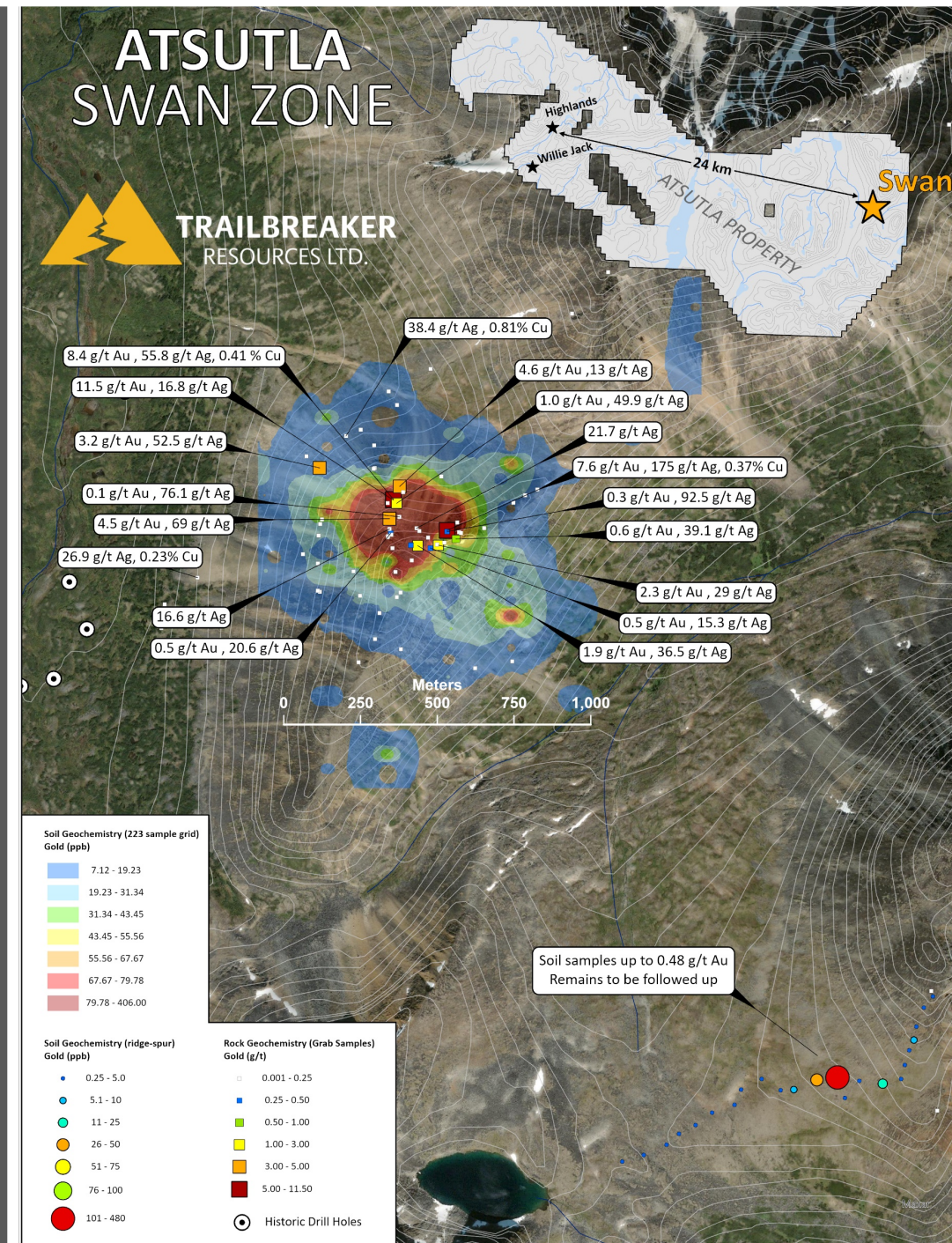
high-grade gold sampled over a 750m X 600 m area



Swan Zone

Au-Cu-Mo porphyry / Epithermal Gold target

- Located 26 km east of the high-grade gold discoveries at the Highlands zone
- Covers a historical porphyry molybdenum-copper prospect that was discovered in the late 1960s and **was never tested for gold mineralization**
- The 2021 program outlined a **900m x 700m Au-As-Ag-Sb-Cu-Mo-Pb soil anomaly** with soil sample values up to **0.41 g/t Au** and **12.9 g/t Ag**. The anomaly covers a gossanous mountain immediately east of historical drilling
- Limited rock sampling to date has yielded **assays of up to 11.5 g/t Au & 175 g/t Ag**.
 - Gold typically occurs with arsenopyrite mineralization and epithermal quartz veining hosted in a leucogranite-porphyry unit of the Upper Cretaceous Glundebery Batholith
- Reconnaissance ridge-and-spur soil sampling has outline a second soil anomaly **2 km** to the southeast with soil values up to **0.48 g/t Au**. This anomaly has not been followed up to date



ATSUTLA GOLD PROJECT

- 900m X 700m gold – silver soil anomaly
- Soil sample values up to 406 ppb Au
- Rock grab samples up to 11.5 g/t Au & 175 g/t Ag

SWAN ZONE

A Precious Metal Rich Gossan

TRAILBREAKER
RESOURCES LTD.

McMurdo Project

Target Commodities	Gold
Exploration Model	Lode gold
Property Size	1,728 ha
Ownership	100%
Location	30 km southwest of Golden, BC
Access	Gravel roads / Helicopter
Highlights	<ul style="list-style-type: none">• Small-scale past production in 1890s with 70 tons of ore grading 0.752 oz/t Au• Grab samples up to 5.13 oz/t Au obtained from the 2020 evaluation program

A modern exploration approach for an old discovery

Vancouver



McMurdo

The property has a rich history of discovery and small-scale mining from the 1890s through the early 1900s of high-grade gold veins but.....

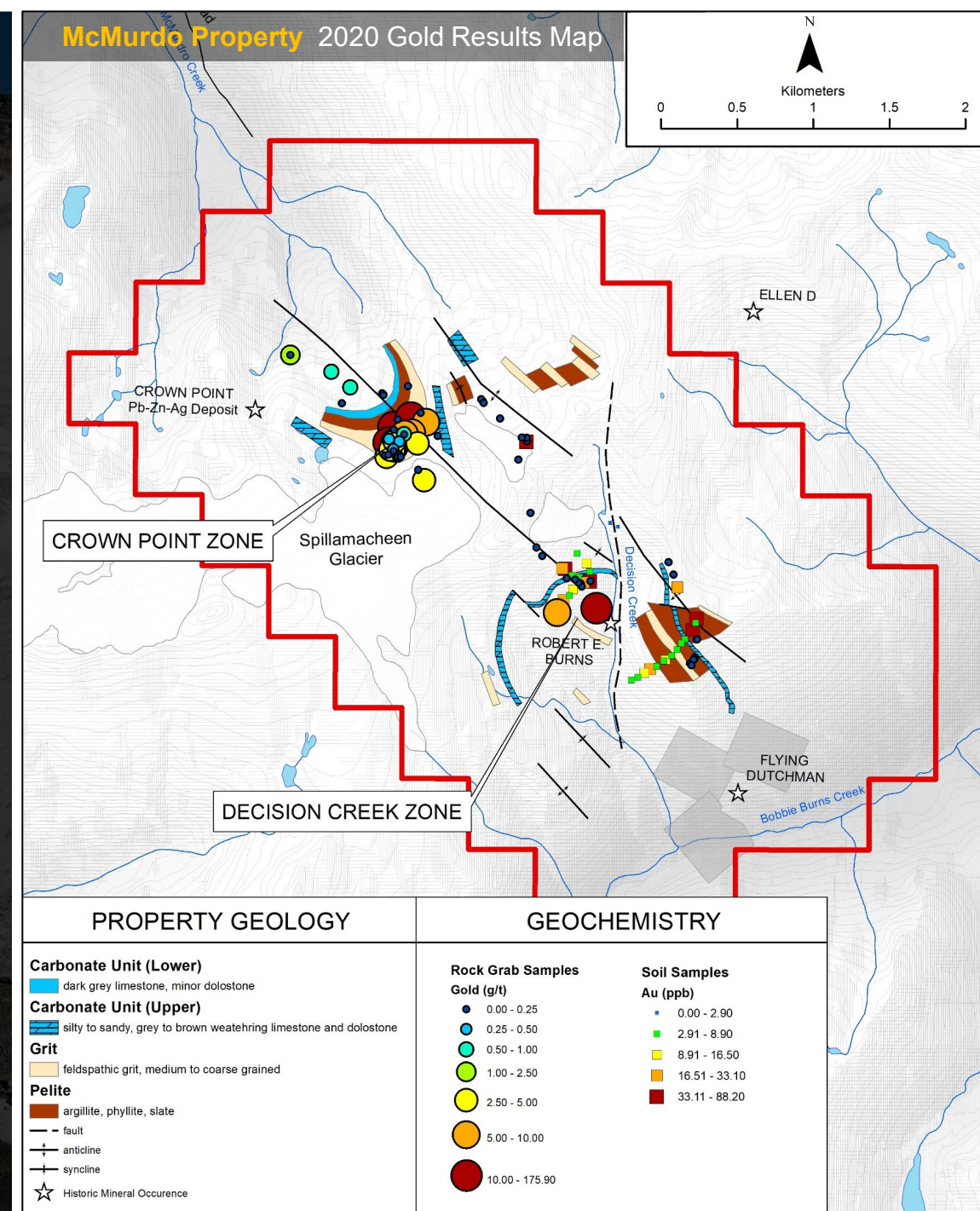
No modern-day exploration methods have ever been employed to evaluate the gold potential on the property

Crown Point Zone

- High-grade gold veins revealed by recent glacial recession were discovered in 2020
- 400 x 300-meter area containing auriferous quartz veins hosted in a micaceous grit unit within the crest of an anticline fold hinge. Select grab samples from the veins assay up to 175.9 g/t Au (5.13 oz/ton)

Decision Creek Zone

- Old workings (Burns Mine) approx. 1.7 km southeast of the Crown Point zone were sampled with rock grab samples obtained from historic trenches assaying up to 76 g/t (2.22 oz/ton) gold
- These Burns showings are located along the same regional-scale anticline structure as the newly discovered Crown Point zone.



Looking South

> 700 meters of glacial ice retreat since last significant gold exploration took place at the turn of the century

NEW SHOWINGS 2020

SPILLIMACHEEN GLACIER

ICE EXTENET
IN EARLY 1900s

HISTORIC GOLD
SHOWINGS (1930s)

McMurdo Crown Point Zone

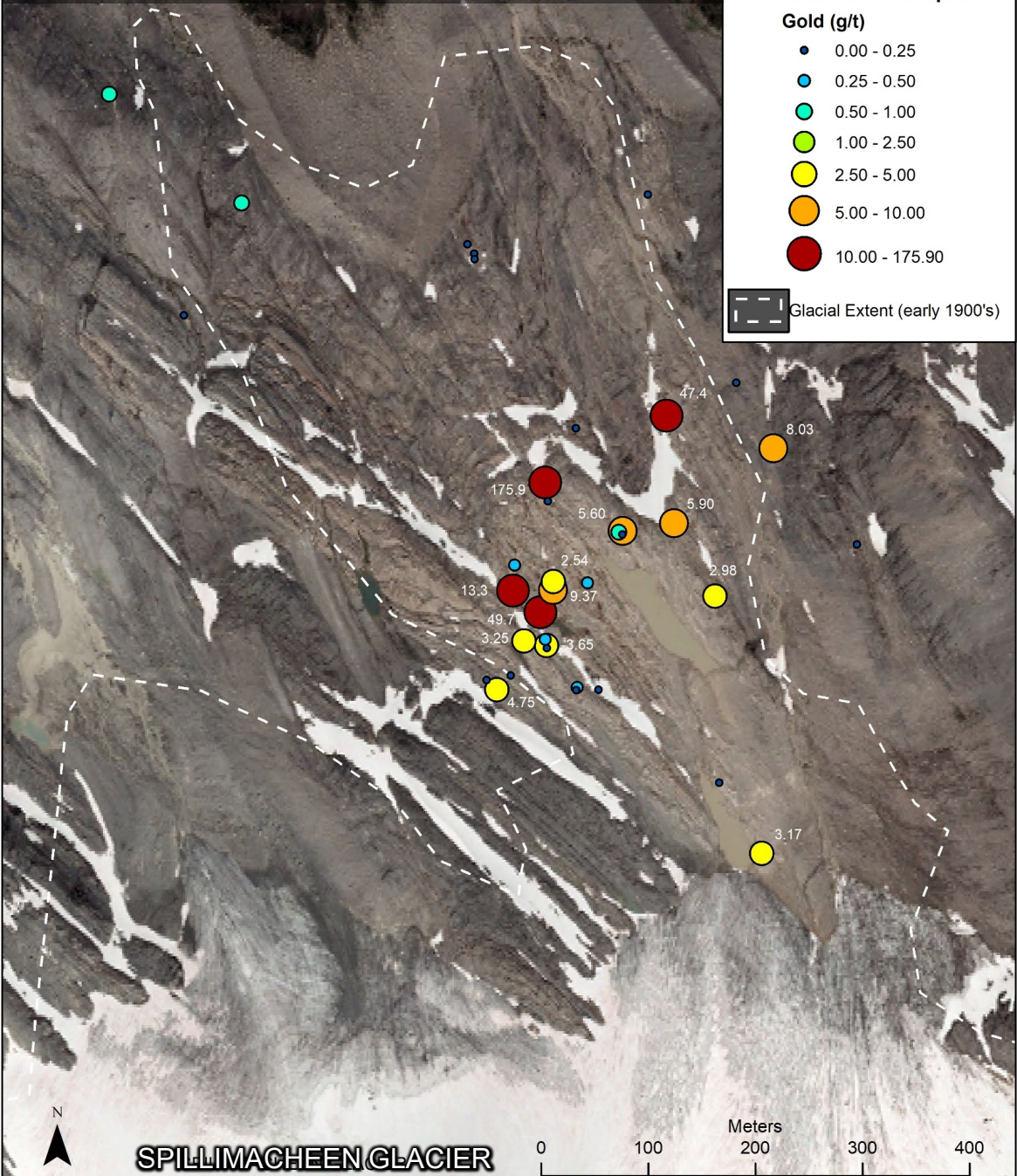
Crown Point Zone 2020 Grab Sample Map

Rock Grab Samples

Gold (g/t)

- 0.00 - 0.25
- 0.25 - 0.50
- 0.50 - 1.00
- 1.00 - 2.50
- 2.50 - 5.00
- 5.00 - 10.00
- 10.00 - 175.90

Glacial Extent (early 1900's)



Looking north



Grab Sample - 5.13 oz/ton Au



Pyritic Quartz Vein

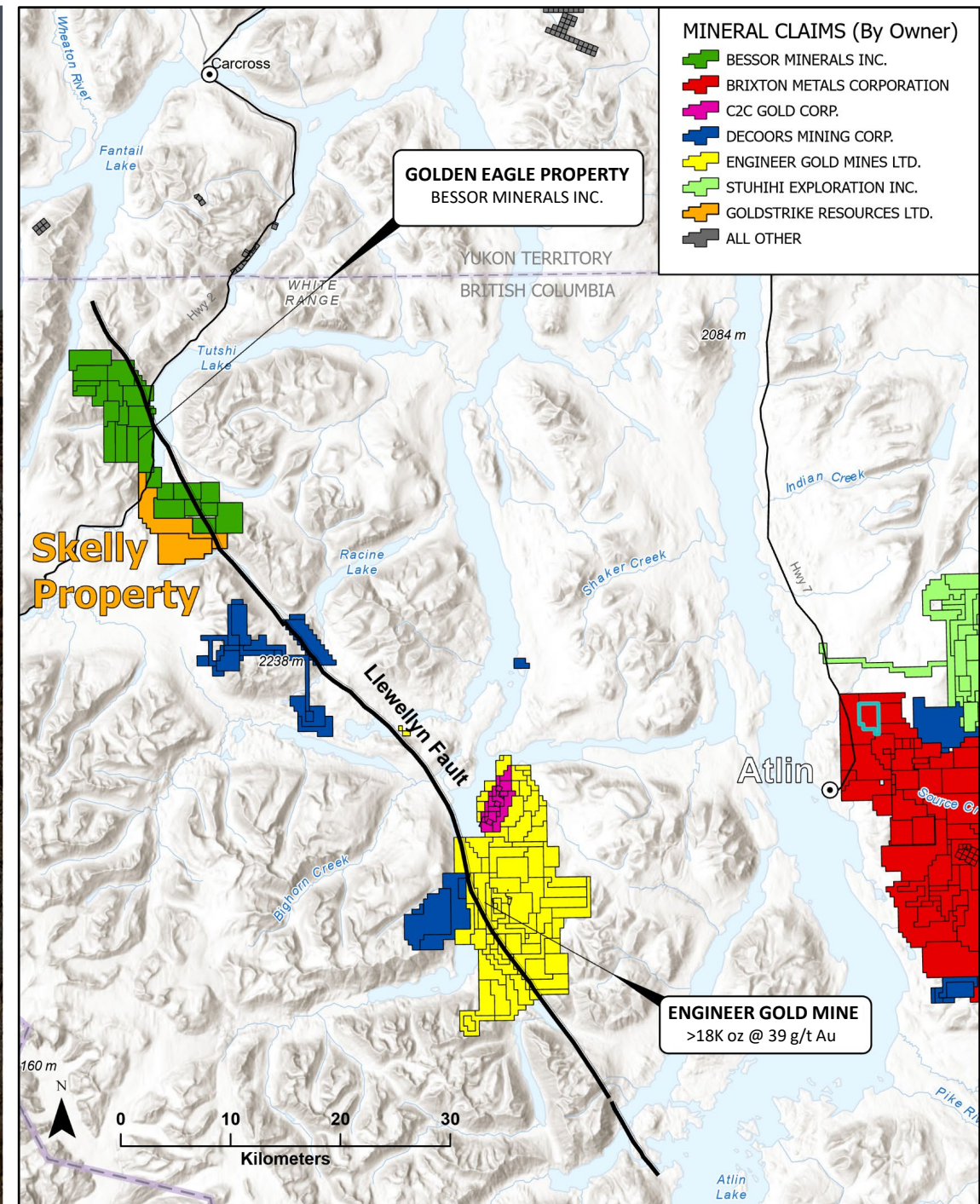
McMurdo Crown Point Zone

Skelly Project

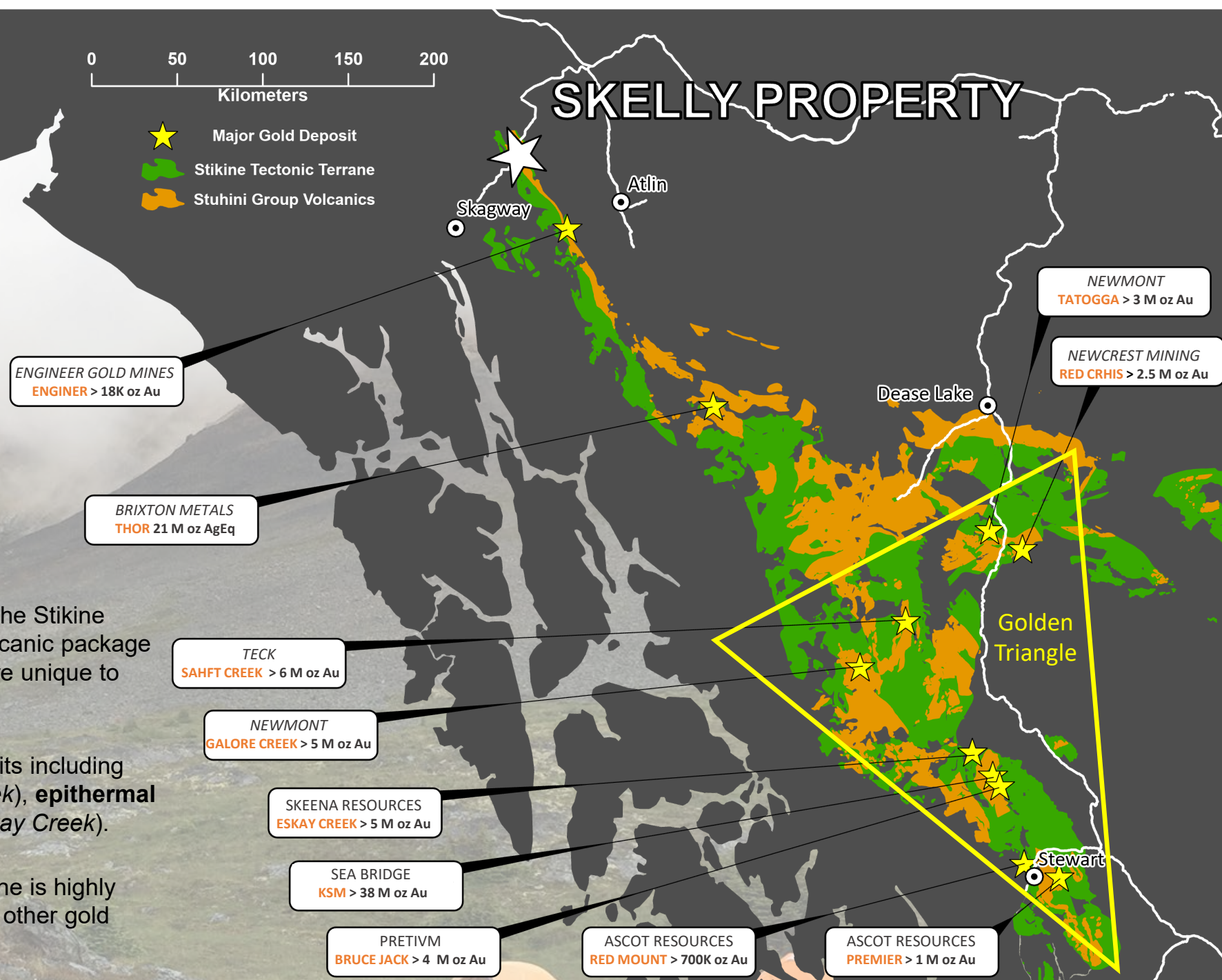
Target Commodities	Gold, Silver
Exploration Model	Lode gold
Property Size	2,526 ha
Ownership	100%
Location	100 km southwest of Whitehorse, YT
Access	Road accessible / Helicopter
Highlights	<ul style="list-style-type: none">Rock grab samples assaying up to 1.03 oz/ton Au and 14.24 oz/ton Ag



An underexplored area in
the right geological setting



- Located within the northern-most end of the Stikine Terrane that contains both the Stuhini volcanic package and a strong Au-As geochemical signature unique to the Golden Triangle mining district
- Potential for a wide variety of gold deposits including **porphyry** (*KSM, Red Chris, Galore Creek*), **epithermal veins** (*GT & Bruce Jack*), and **VMS** (*Eskay Creek*).
- This northern portion of the Stikine Terrane is highly prospective yet much less explored than other gold districts in BC.

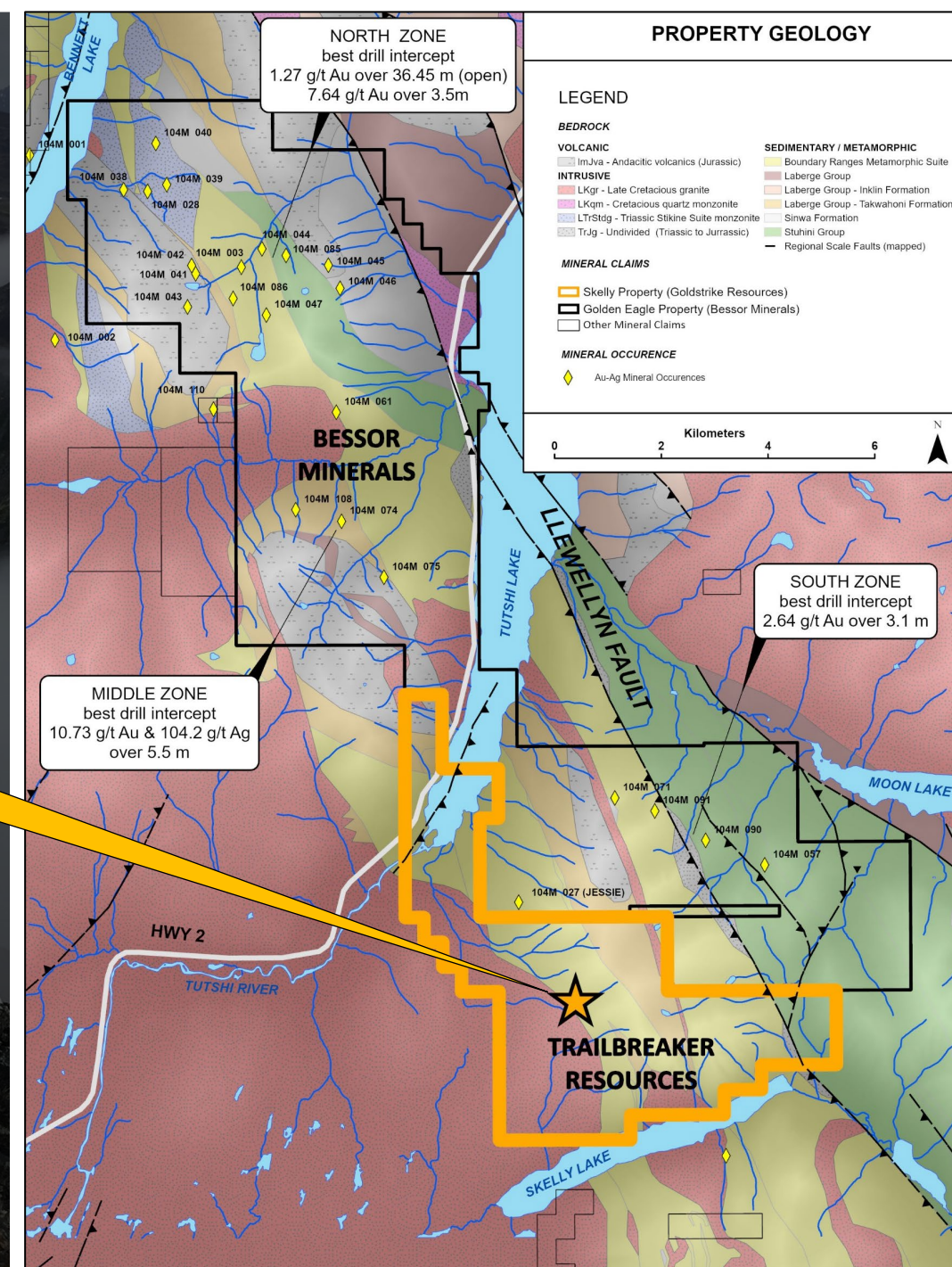


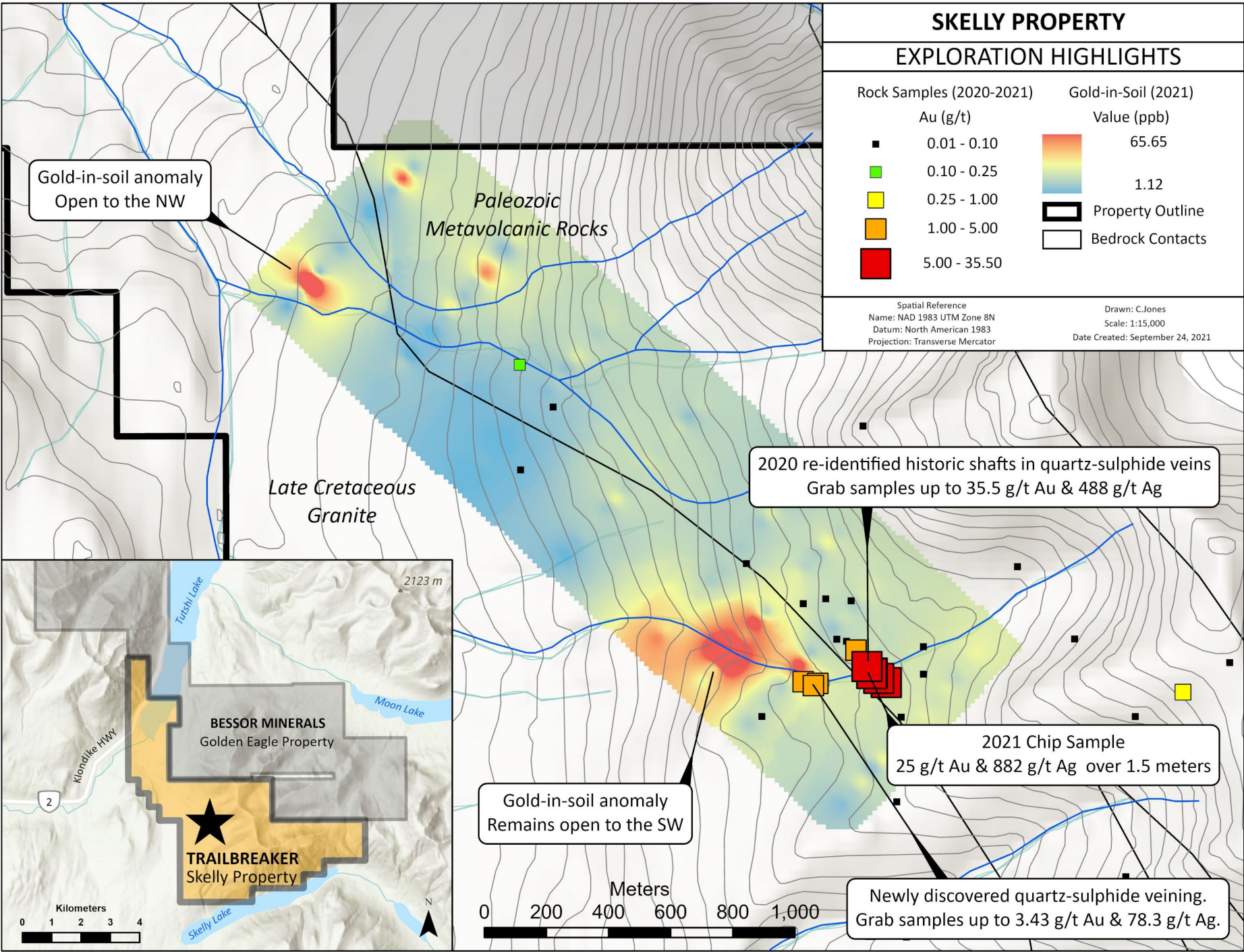
Skelly Project

An underexplored gold district with potential for big discoveries

- The Skelly property is contiguous to Bessor Minerals 8,178 hectare **Golden Eagle property** that contains significant drilled gold intercepts with the dominant mineralization consisting of high grade, gold-bearing quartz-sulphide veins.
- The 2020 first pass exploration program discovered a previously undocumented historic exploration shaft containing quartz – sulphide veins with grab samples up to **35.5 g/t Au and 488 g/t Ag**.
- Auriferous quartz veins were sampled over a 100-meter northwest-trending shear zone that parallels the granite contact and remains open along strike

SKELLY
Grabs samples up to
35.5 g/t Au & 488 g/t Ag





Skelly

Gold-bearing quartz veins

LOOKING SE

Highway 2

2.04 g/t Au

33.3 g/t Au

5.45 g/t Au

4.25 g/t Au

> 100 m trend of gold-bearing quartz veining – remains open



Historic Exploration Shaft
Grab samples up to 35.5 g/t gold & 275 g/t silver



SKELLY PROPERTY

Grab Sample
22.4 g/t Au & 1147 g/t Ag

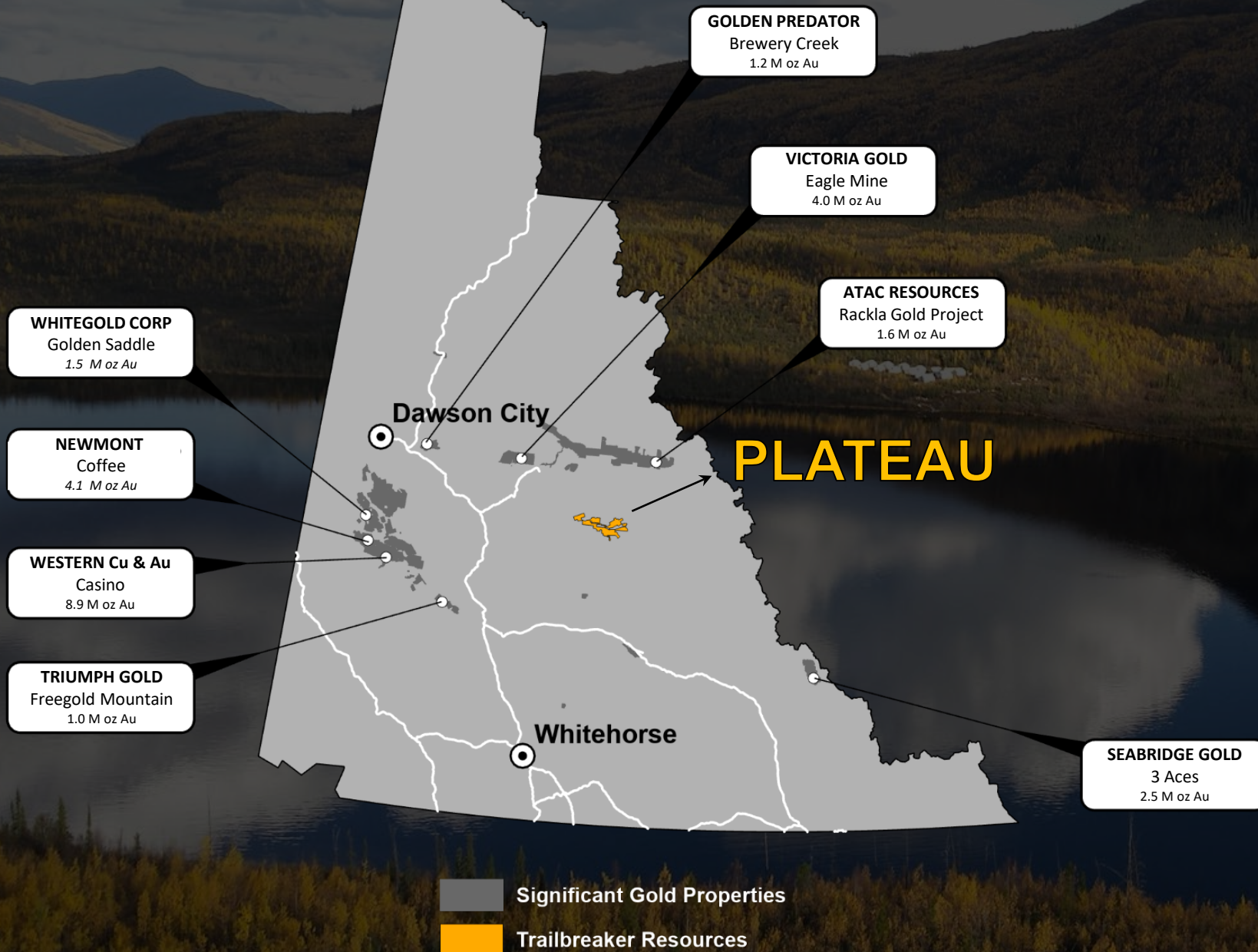
Chip Sample
25.4 g/t Au & 882 g/t Ag over 1.5 m



TRAILBREAKER
RESOURCES LTD.

Plateau Project

A newly discovered, district-scale gold system in the Selwyn Basin, 120 km east of Mayo, YT. The property covers 66,200 hectares. Gold mineralization occurs across 50 km of strike within extensive sequences of quartz stockwork and hydrothermal breccias.



Plateau Project

- Staked in 2010 as a grassroots exploration program with no previous gold exploration recorded in the area.
- Property spans 70 km covering 662 square kilometres
- Represents a 50 km trend of high-grade gold discoveries
- 7 main gold zones discovered to date
- Widespread coarse visible gold mineralization in hydrothermal quartz breccia and stockworks
- Good access with two float plane docks on two separate lakes located on the property





TRAILBREAKER RESOURCES LTD.

TRAILBREAKERRESOURCES.COM



650 West Georgia St
Suite #2110
Vancouver, British Columbia
Canada V6B 4N9

Daithi Mac Gearailt
CEO, President & Director
info@TrailbreakerResources.com
1-604-681-1820

TSX-V: **TBK**
NASDAQ: **APRAF**
FRA: **KCG2**

CONTACT US

