

CORPORATE PRESENTATION

November 27, 2023



TRAILBREAKER
RESOURCES LTD.

TSX.V: TBK

trailbreakerresources.com

A Canadian project generator with a focus on precious metal exploration in British Columbia and the Yukon Territory.

DISCLAIMER

Forward looking statements contained in this Presentation that are not historical facts are "forward-looking information" or "forward-looking statements" (collectively, "Forward-Looking Information") within the meaning of applicable Canadian securities legislation and the United States Private Securities Litigation Reform Act of 1995. Forward-Looking Information includes, but is not limited to, disclosure regarding possible events, conditions or financial performance that is based on assumptions about future economic conditions and courses of action; expectations regarding future exploration and drilling programs; and receipt of related permitting. In certain cases, Forward-Looking Information can be identified by the use of words and phrases such as "anticipates", "expects", "understanding", "has agreed to" or variations of such words and phrases or statements that certain actions, events or results "would", "occur" or "be achieved". Although Trailbreaker has attempted to identify important factors that could affect Trailbreaker and may cause actual actions, events or results to differ materially from those described in Forward-Looking Information, there may be other factors that cause actions, events or results not to be as anticipated, estimated or intended. In making the forward-looking statements in this Presentation, if any, Trailbreaker has applied several material assumptions, including the assumption that general business and economic conditions will not change in a materially adverse manner. There can be no assurance that Forward-Looking Information will prove to be accurate, as actual results and future events could differ materially from those anticipated in such statements. Accordingly, readers should not place undue reliance on Forward-Looking Information. Except as required by law, Trailbreaker does not assume any obligation to release publicly any revisions to Forward-Looking Information contained in this Presentation to reflect events or circumstances after the date hereof or to reflect the occurrence of unanticipated events – This Presentation is not for redistribution.

01

WHO WE ARE

A group of project generators and explorers with a track record of effective grassroots exploration and lasting community relations.

02

WHAT WE DO

Continuous exploration, property acquisition and research, allowing us to maintain a portfolio of quality precious metal properties.

03

WHERE WE EXPLORE

In mining-friendly British Columbia and Yukon Territory, Canada where we currently own ten early-stage projects.



The company is currently advancing numerous exciting projects across BC and Yukon. We continue to identify underexplored targets that have been overlooked for precious metal and copper mineralization and, with the use of the tried and trued exploration methods, explore, discover, and advance our projects. We plan to continue adding to our portfolio and creating value for everyone."

**- Daithi Mac Gearailt,
President and CEO**

INVESTMENT OPPORTUNITY



**TRACK RECORD OF
SUCCESSFUL PROJECT
GENERATION**



**SEASONED TEAM OF
PROSPECTORS & GEOLOGISTS**



**LARGE UPSIDE
POTENTIAL ON ALL PROJECTS**



**A CANADIAN
COMPANY FOCUSED
ON PRECIOUS METALS &
COPPER**



**EXPLORING IN MINING
FRIENDLY BRITISH COLUMBIA
& YUKON**

CAPITAL STRUCTURE	AS OF SEPTEMBER 12, 2023 - UNAUDITED
Shares Issued & Outstanding	33,257,134
Fully Diluted	45,379,234
Options (\$0.24 - \$5.95)	2,397,500
Warrants (\$0.15 - \$0.25)	9,724,600
52-Week Range	\$0.08 – \$0.32

Trailbreaker Resources Ltd



EXECUTIVE TEAM



Daithi Mac Gearailt
President, CEO & Director

Mr. Mac Gearailt is a geologist who graduated with Honours from the National University of Ireland. He has worked as an exploration geologist for over 14 years in Alaska, Nevada, British Columbia and Yukon. During his career, he has been involved in several new discoveries and has worked with both junior and senior mining companies covering project generation, property evaluation, and management of multimillion-dollar exploration and drilling programs. In addition to identifying, analyzing, strategizing and negotiating acquisitions or divestments of mineral properties, Mr. Mac Gearailt has also been instrumental in raising millions of dollars toward the financing of exploration projects.



Lucy Zhang, CPA, CGA, MBA
Director & CFO

Ms. Zhang is a member of the Chartered Professional Accountants of British Columbia. She has an Honours BA from Suzhou University, China, and an MBA (Honors) from Royal Roads University. Ms. Zhang's recent experience has included controller positions in administration, accounting, and finance with publicly traded mining and exploration companies.



Dillon Hume, M.Sc., P.Geo.
VP of Exploration

Mr. Hume completed both his B.Sc. degree in geology and M.Sc. degree in economic geology at SFU and is a registered professional geoscientist in BC. His M.Sc. thesis focused on understanding the structural and mineralogical controls of gold mineralization at the Tajitos orogenic gold deposit in Sonora, Mexico. Mr. Hume has more than ten years of work experience in the mineral exploration sector, with a wide breadth of experience in managing complex exploration projects. During his career as an exploration geologist, he has been an important part of the team to make significant discoveries including the East Ridge Zone at the Red Chris Cu-Au porphyry mine and the Krakatoa Zone at the Kudz Ze Kayah VHMS deposit.



Ewan Webster, Ph.D.
Geologist Director

Mr. Webster is an exploration geologist who has worked for a number of public companies in North and South America, on a variety of different deposit types. He is currently the senior geologist for the Metal's Group of Companies and holds the position of President, CEO and Director for Thesis Gold. He holds a First-Class Honours degree in geology from the University of Glasgow, Scotland and is a registered professional geoscientist in British Columbia. His PhD research focused on unravelling aspects of the structure, stratigraphy, tectonics, and metamorphism of southeastern British Columbia.



Frank Wheatley
Director

Mr. Wheatley is currently an Independent Director of Endeavour Mining Corporation. He has more than 35 years of experience that includes legal and executive positions with Canadian public mining companies. He has served as Chief Executive Officer and General Counsel for a number of TSX-listed companies in the mining sector and also brings experience as an Independent Director, Committee Chair, and Committee Member.



John A. Kuehne M. Mgmt., CA, CPA
Director

Mr. Kuehne is presently the Chief Financial Officer of Highbury Energy Inc. Highbury has developed a proprietary clean technology that can decarbonize transportation fuels, natural gas, industrial heating applications, and power the Hydrogen fuel revolution. From 2010 to 2015, John was engaged with Global Energy Horizons (GEHC). From 2000 to 2009, John was President of SmallCap Corporate Partners Inc. John was the Chief Financial Officer of Doman Industries Limited, a publicly-traded Canadian forest products. John spent 9 years with Deloitte.

GEOLOGICAL FIELD TEAM

Led by CEO Daithi Mac Gearailt, the team has been working together for over a decade with many new gold discoveries across the Yukon Territory and British Columbia.

The team includes some of the industry's best consulting boots-on-the-ground prospectors and geologists that help turn conceptual exploration targets into discoveries.

OUR FOCUS

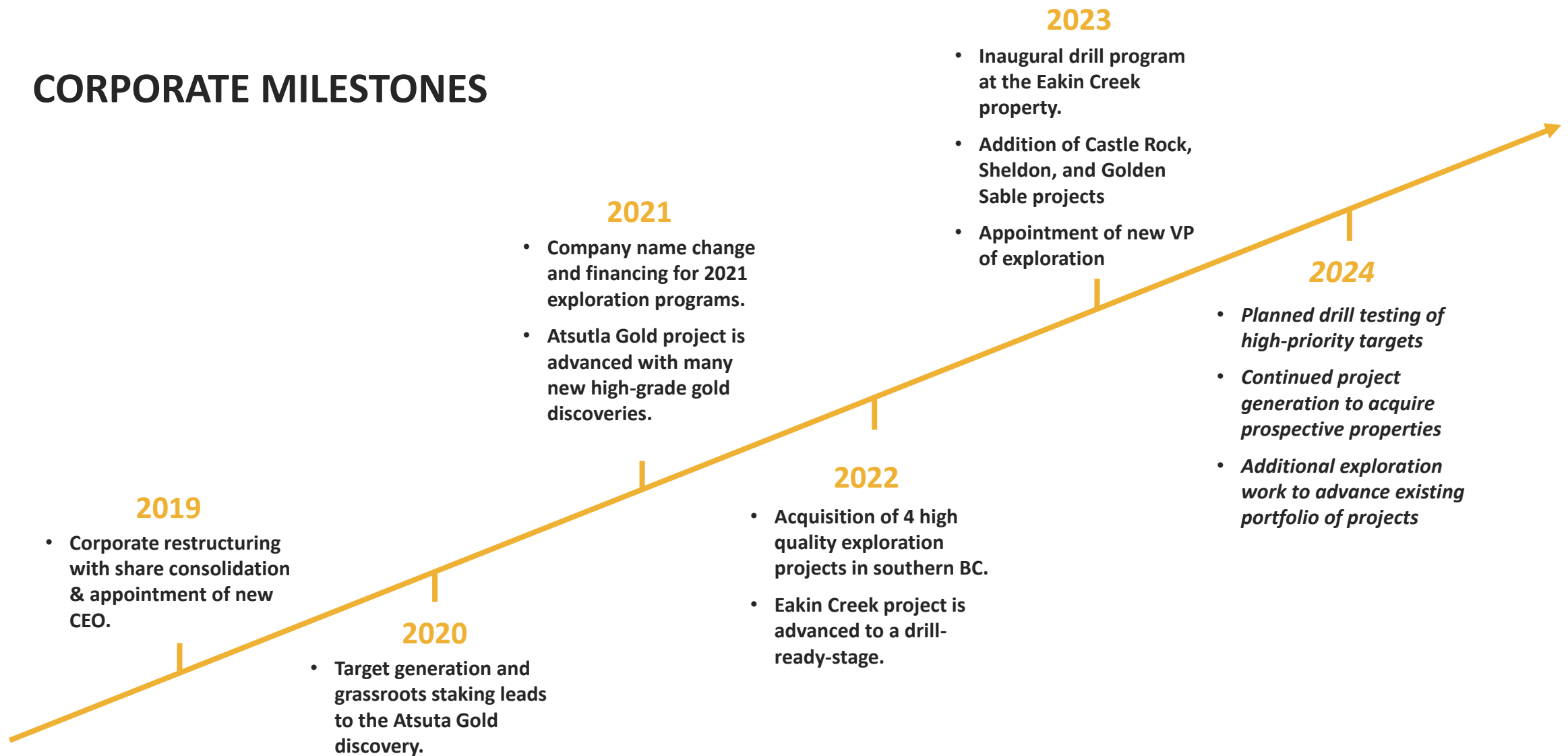
Underexplored and overlooked regions

Evaluating large tracts of land, looking for district scale discoveries

100% ownership in early-stage exploration projects in British Columbia and Yukon



CORPORATE MILESTONES



On March 22, 2021, the company commenced trading on the TSXV under the symbol TBK.V. The name of Trailbreaker Resources represents the company's focus on developing an evolved brand of evaluating under-explored areas in safe jurisdictions.

GOLD ASSET PORTFOLIO

01

ATSUTLA GOLD PROJECT, NORTHERN BC

A brand-new (2021), district-scale, high-grade gold discovery situated 70 km south of the Yukon-BC border and 130 km northwest of Dease Lake, British Columbia. To date, 5 significant gold zones have been defined over 26 kilometers with grab samples assaying over 18 oz/ton Au.

02

CASTLE ROCK, VANCOUVER ISLAND, BC

An underexplored gold-copper porphyry prospect with newly defined 3 km anomalous geochemical trend and numerous prospective targets that have not yet been explored.

03

SHELDON, YUKON

A reduced-intrusion related gold system in central Yukon, within the Tombstone Gold Belt.

04

OTHER PROPERTIES

Trailbreaker is continually generating new projects via staking and property acquisitions, focused on under-explored regions of British Columbia and Yukon Territory, adding to our growing portfolio of high-quality gold assets. Other property assets include: **Golden Sable, Plateau, Eakin Creek, McMurdo, Eagle Lake and Connector Gold.**



ATSUTLA PROJECT

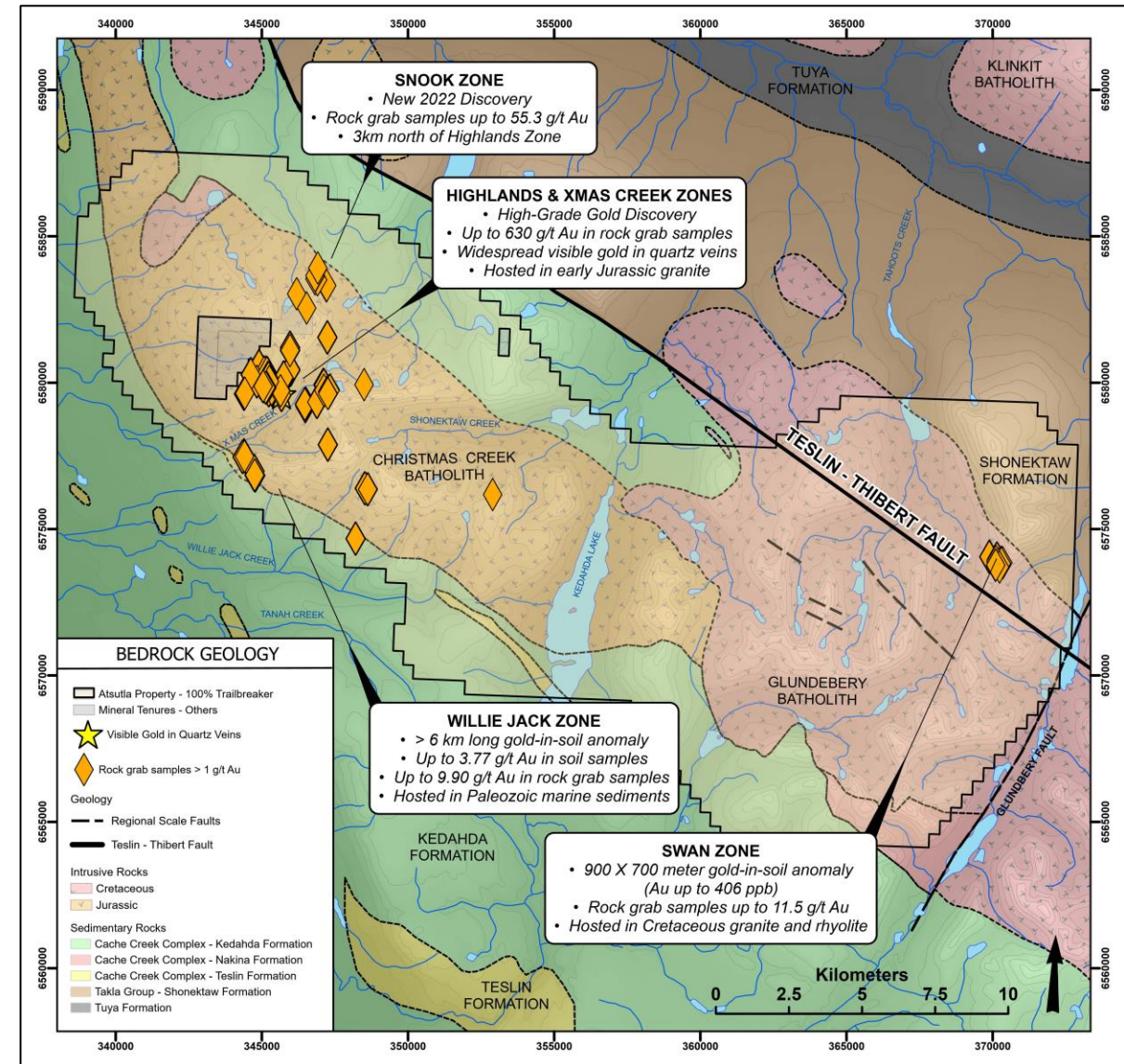
- **New, high-grade gold discovery** in a part of BC with no previous gold exploration.
- Huge land package with **over 400 square km** of prospective ground.
- Majority of claim package is **100%-owned** with no underlying royalties
- **District-scale potential** with 5 significant gold zones (to date) defined over 26 kilometers in just 2 field seasons
- Widespread high-grade rock grab samples up to **18.38 oz/ton Au**
- **Visible gold** sampled over a 750 meter extent
- Majority of the property remains unexplored
- Situated in the right geological setting for porphyry Cu-Au and orogenic gold deposits.
- The Right Jurisdiction (mining-friendly British Columbia).



01

ATSUTLA PROJECT GEOLOGY AND MINERALIZATION

- Potential for a wide variety of gold deposits including porphyry (Swan) and orogenic vein systems (Highlands).
- The project straddles the Teslin-Thibert fault system with the Cache Creek terrane juxtaposed against the Quesnel terrane.
 - Deep-seated, terrane-bounding faults are ideal structures for acting as conduits for mineralized fluids.
 - These structures often control multi-stage hydrothermal events that result in clusters of ore deposits, which are often referred to as “camps”.
- Covers Mesozoic age plutons emplaced in sedimentary rocks of the Cache Creek terrane and volcanic rocks of the Quesnel terrane.
 - The region was active during both Jurassic and Cretaceous time periods which represent the most significant Cu-Au mineralization timeframe in British Columbia.
- With the project encompassing similar stratigraphy and structures as the analogous Atlin & Cassiar gold camps (>2 Moz Au), there is excellent potential for discovering Northern BC’s next gold camp.

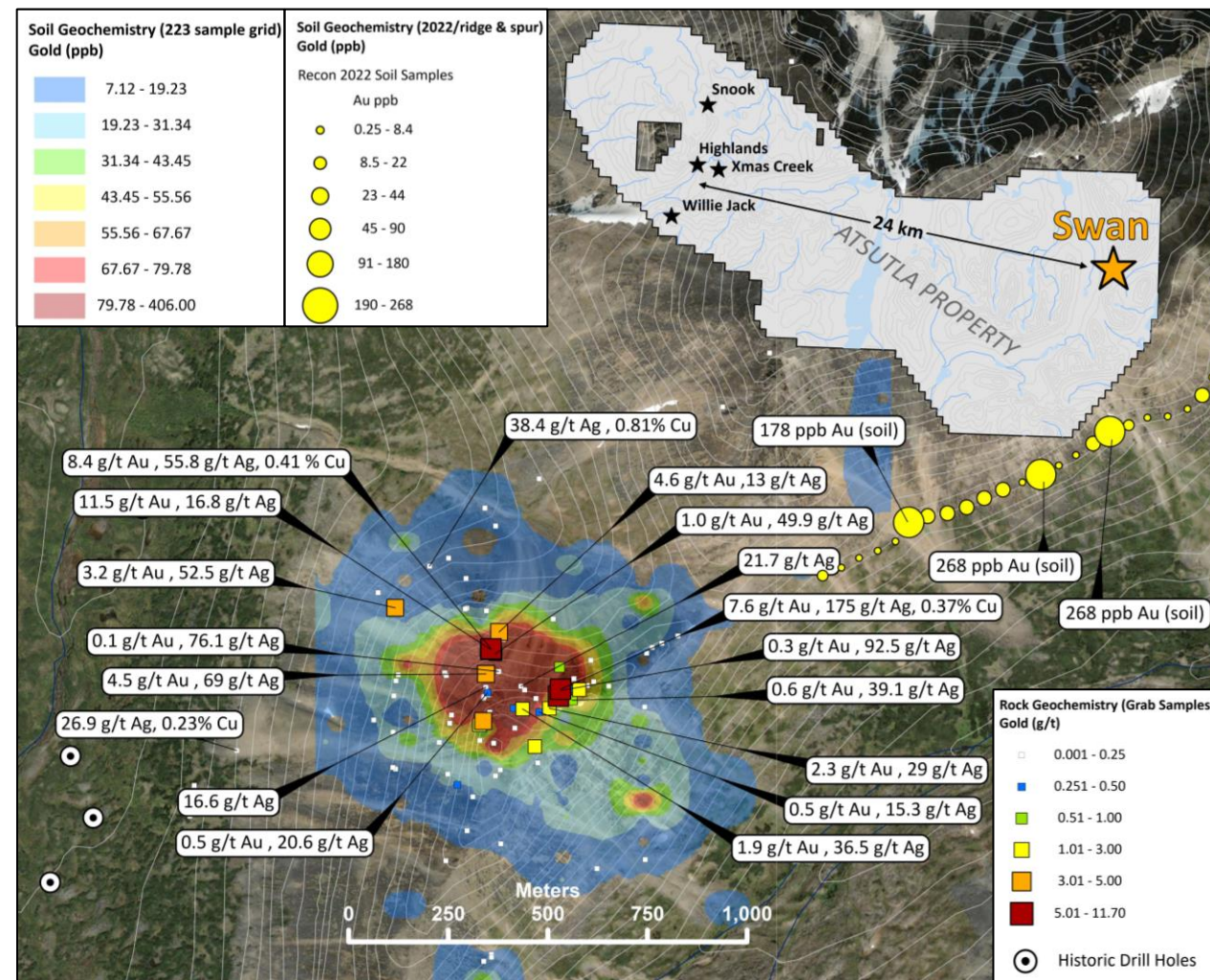


01

ATSUTLA PROJECT Cu-Au PORPHYRY TARGET

- Swan is located 26 km east of the high-grade gold discoveries at the Highlands zone and represents an early-stage Cu-Au porphyry prospect.
- Covers a historic molybdenum-copper porphyry prospect that was discovered in the late 1960s and was never tested for gold mineralization.
- The 2021 program outlined a **900m x 700m Au-As-Ag-Sb-Cu-Mo-Pb soil anomaly** with soil sample values up to 0.41 g/t Au, 12.9 g/t Ag and 732 ppm Cu. The anomaly covers a gossanous mountain immediately east of historical drilling.
- Rock sampling to date has yielded assays of up to **11.7 g/t Au, 212 g/t Ag, and 0.81% Cu**.
 - Gold typically occurs with arsenopyrite mineralization and epithermal quartz veining hosted in a leucogranite-porphyry unit of the Upper Cretaceous Glundebery Batholith.
 - The hydrothermal alteration pattern and unique geochemical signature observed at Swan suggest the zone may represent the upper lithocap of a Cu-Au porphyry system at depth.

SWAN ZONE



01

ATSUTLA PROJECT A GOLD-RICH GOSSAN

SWAN ZONE



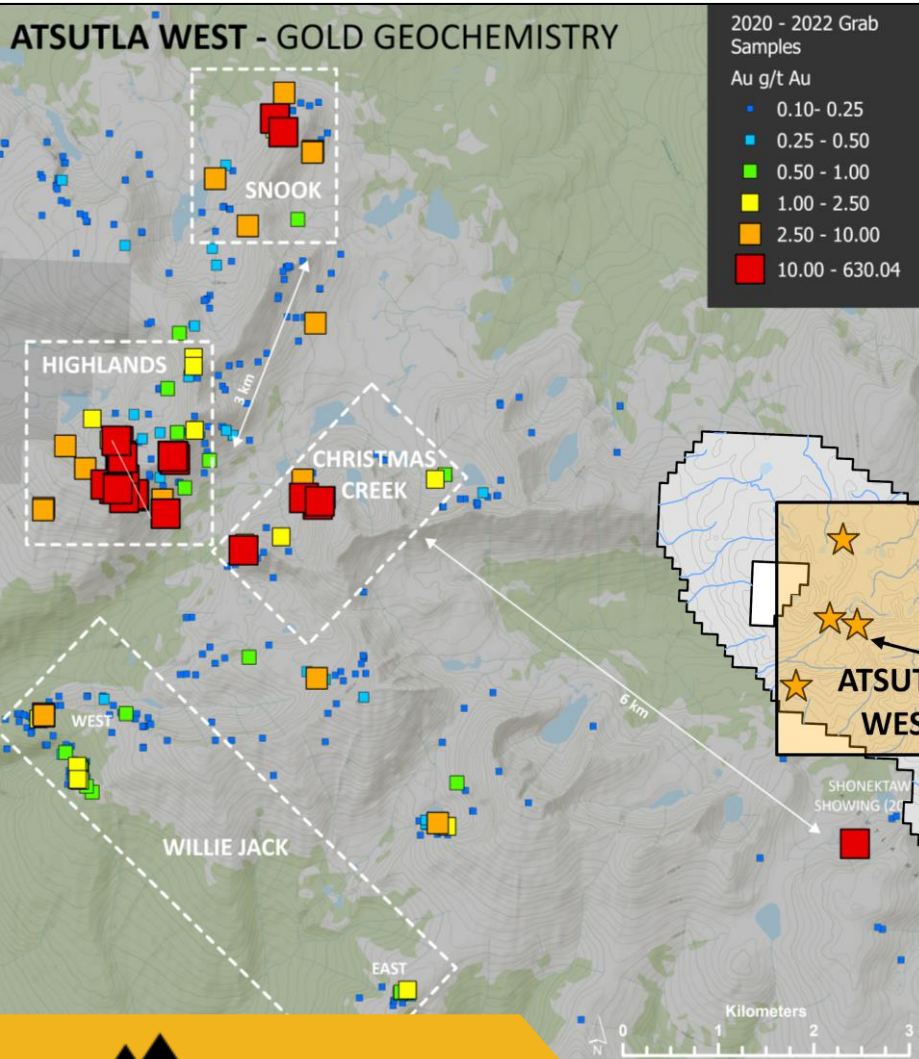
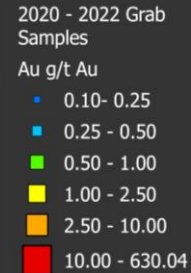
- 900m x 700m gold-silver and base metal soil anomaly
- Soil sample values up to 406 ppb Au
- Rock grab samples up to **11.7 g/t Au & 212 g/t Ag**

01

ATSUTLA PROJECT HIGH-GRADE GOLD

HIGHLANDS

ATSUTLA WEST - GOLD GEOCHEMISTRY



HIGHLANDS ZONE

- High-grade gold sampled over a 750m x 600m area
- Coarse visible gold with bonanza grades
 - Up to 630 g/t Au & 1894 g/t Ag

WILLIE JACK WEST

SNOOK ZONE

- New Discovery in 2022
- High-grade quartz veins with assays up to 55.3 g/t Au

CHRISTMAS CREEK ZONE

- High-grade quartz veins with assays up to 102 g/t Au, 524 g/t Ag

- Rock grab samples up to 6.53 g/t Au



24 km
SWAN
ATSUTLA PROPERTY

WILLIE JACK ZONE

- Large gold-in-soil geochemical anomaly
- Soil samples up to 3.77 g/t Au
- Rock grab samples up to 9.9 g/t Au

> 6km Gold Trend

01

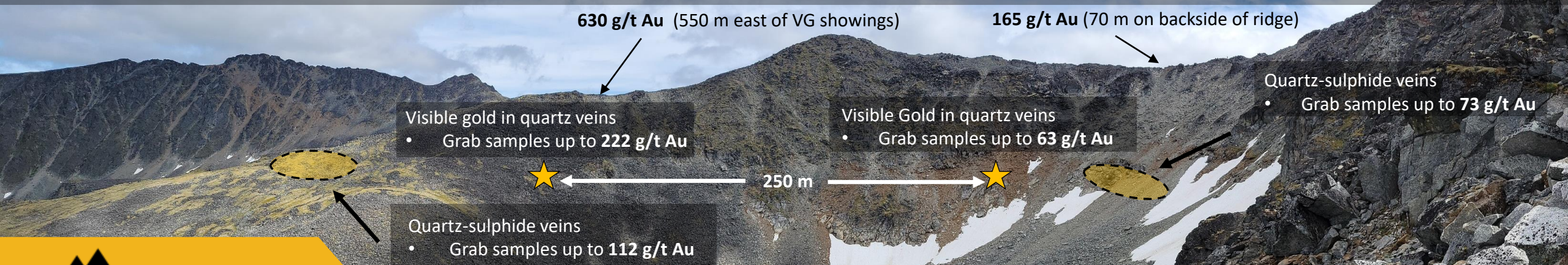
ATSUTLA PROJECT COARSE VISIBLE GOLD

HIGHLANDS



HIGHLANDS ZONE

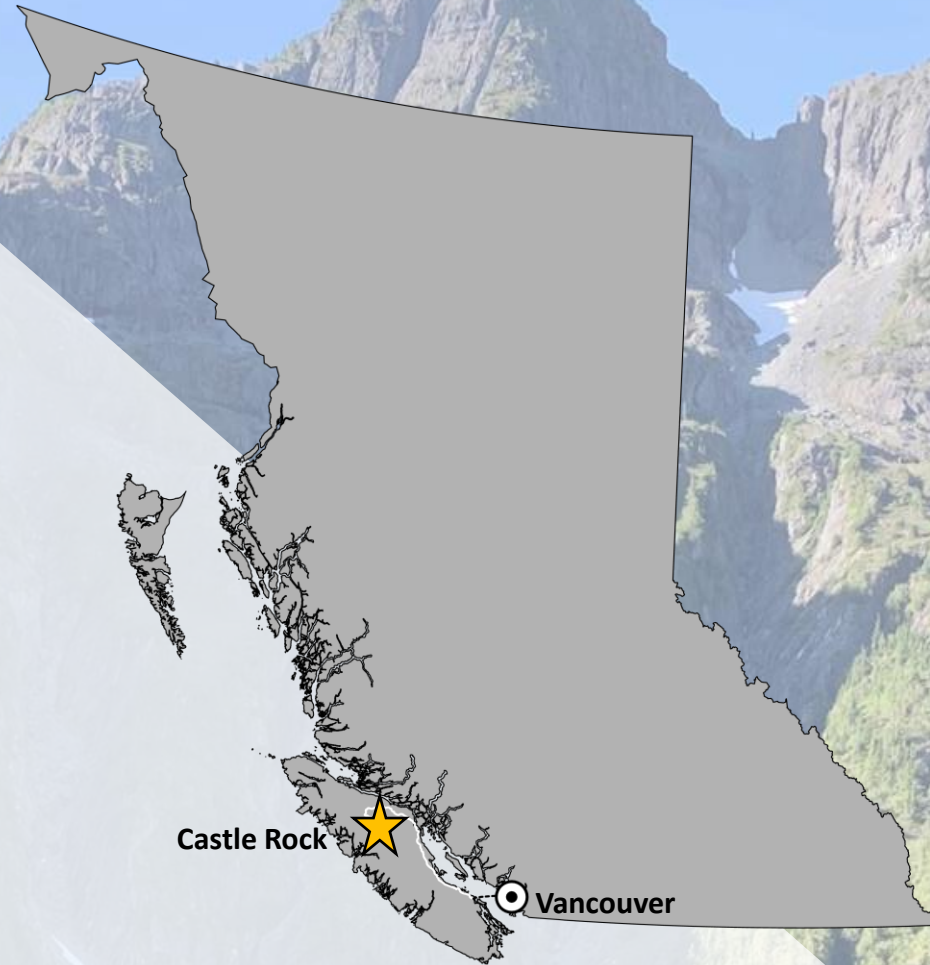
High-grade gold sampled over a 750m x 600 m area



02

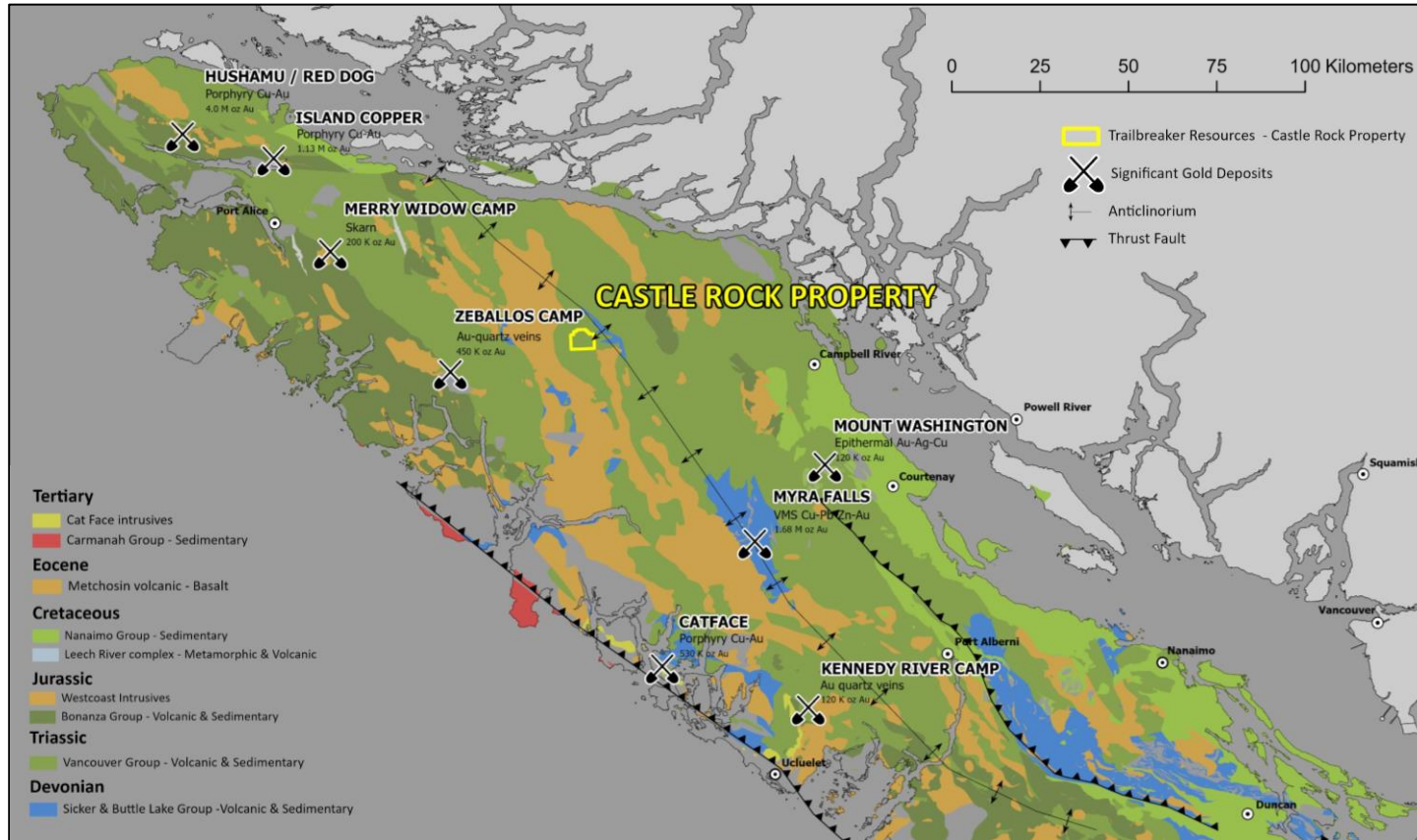
CASTLE ROCK

- Early-stage **gold-copper porphyry prospect** located in northern Vancouver Island
- **Good infrastructure** with road access, nearby major transmission line, and deep-water seaport
- Within a **region of known porphyry deposits** including Hushamu (4.0 Moz AuEq) and Island Copper deposits (past production >2.7B lb Cu and >1.0 Moz Au)
- Castle Rock is a **new gold-copper discovery** in an underexplored area
- **The Heart zone was discovered in 2011** with chip sampling from a gossanous outcrop returning **2.08 g/t Au over 30 m**
- **Never drill tested**



03

CASTLE ROCK REGIONAL SETTING

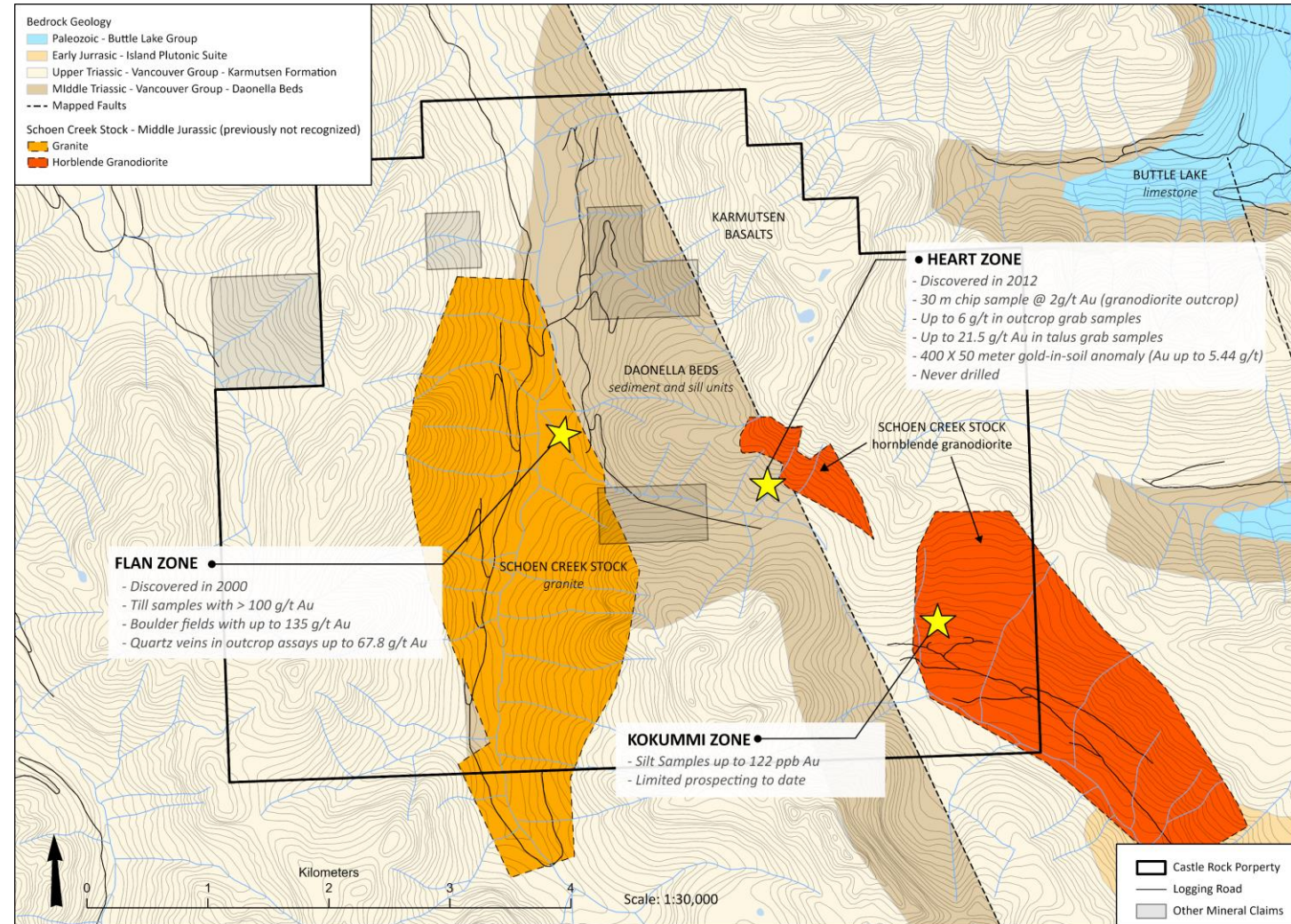


- Northern Vancouver Island is host to several large Cu-Au porphyry deposits including Northisle's Hushamu deposit (4.0M oz AuEq) and BHP Billiton's past-producing Island Copper deposits (produced >2.7B lb Cu and >1.0M oz Au)
- The Heart zone showing hosts consistent gold values within a hydrothermal altered and brecciated granodiorite dyke. This may represent the upper limits of a gold-enriched porphyry system with potential for higher copper values at depth.
- The Schoen Creek drainage was not previously known for gold mineralization or widespread intrusive magmas prior to 2010. Recent logging cut blocks and roads have provided access, allowing for these new discoveries.

03

CASTLE ROCK PROPERTY GEOLOGY AND MINERALIZATION

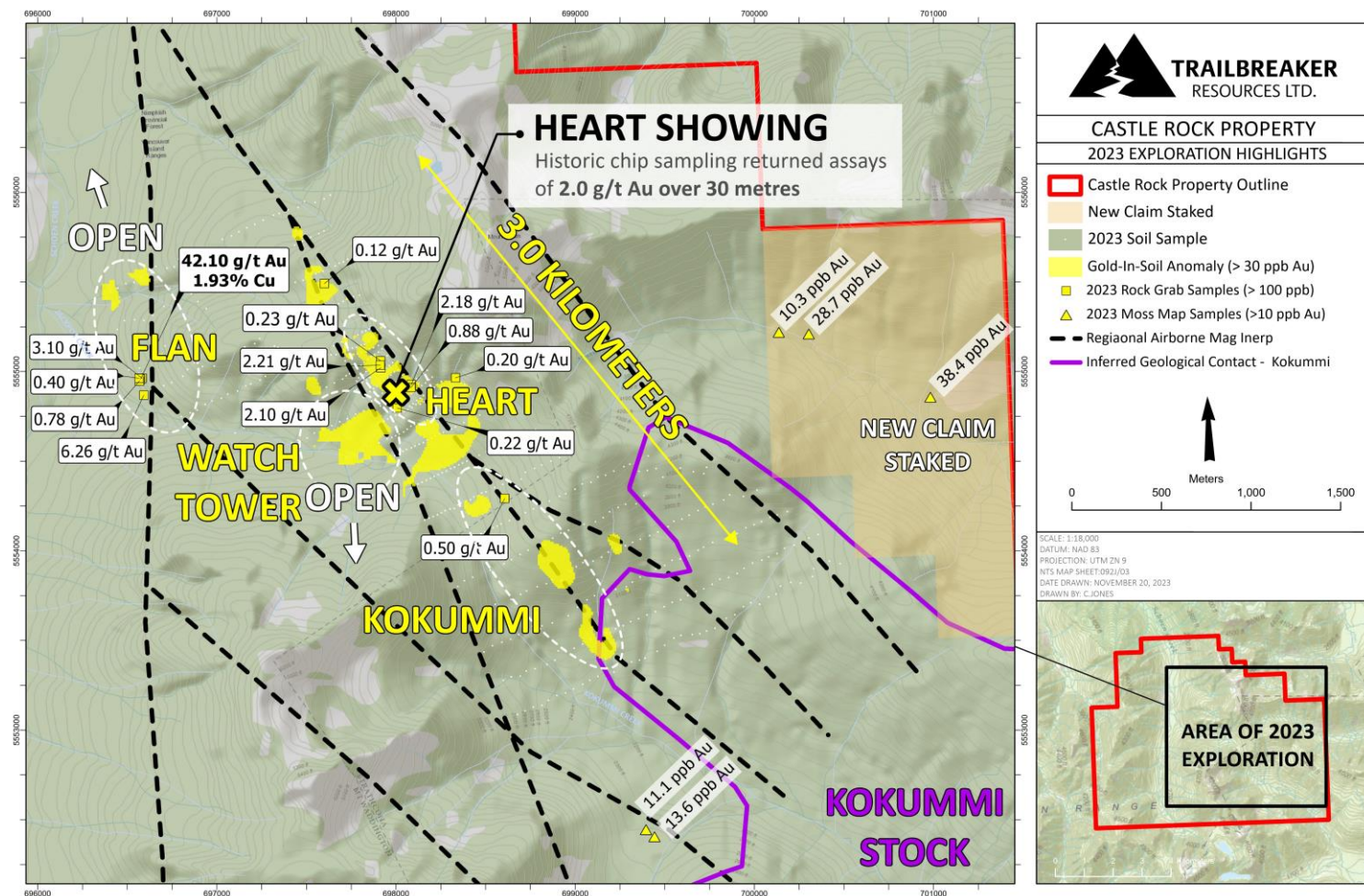
- The property covers middle Triassic sedimentary rocks which are overlain by the upper Triassic Karmutsen basalts
- Intrusive rocks include Triassic gabbro sills and later Jurassic granodiorite plutons to the northwest and to the southeast. Smaller dykes and plutons of Jurassic age intrusive are observed throughout the property with the Heart zone being comprised of this unit.
- A north-trending, regional-scale fault zone cuts through the center of the property, dividing the metasediments and Karmutsen basalts. Dykes and small plutons of granodiorite tend to intrude along this fault zone. The Heart zone straddles this fault zone and is comprised of Jurassic age dykes that have been emplaced in the fault structure.



03

CASTLE ROCK EXPLORATION TARGETING

- **3-KM TREND** with multiple gold-in-soil anomalies and occurrences of outcropping mineralization
 - **HEART ZONE:** Northwest-trending Au-Cu-As soil anomaly of ~1150 x 200 m, centered on outcropping gossanous granite with pyritic stringers and quartz-carbonate stockworks in basalt (the Heart showing). Channel sampling from the granite returned 13.11 m of 0.68 g/t Au
 - **KOKUMMI ZONE:** Gold-in-soil anomaly along an inferred fault, near the contact of the Kokummi granodiorite stock. The soil anomaly is currently defined over ~800 x 150 m and is open to the southeast.
 - **WATCHTOWER ZONE:** Gold-in-soil anomaly, southwest of the Heart zone. The soil anomaly currently remains open to the south and west.
- **FLAN ZONE:** Initially discovered as large boulders that returned grades of up to 135 g/t Au. Nearby outcrops display gossanous basalt with pyrrhotite, pyrite, and chalcopyrite. The zone is also defined by a weak soil anomaly, which is open to the north and west. This zone occurs at an intersection of magnetic lineament.
- Moss-mat sampling has also returned anomalous results in unexplored portions of the property, which have potential for additional zones of mineralization.



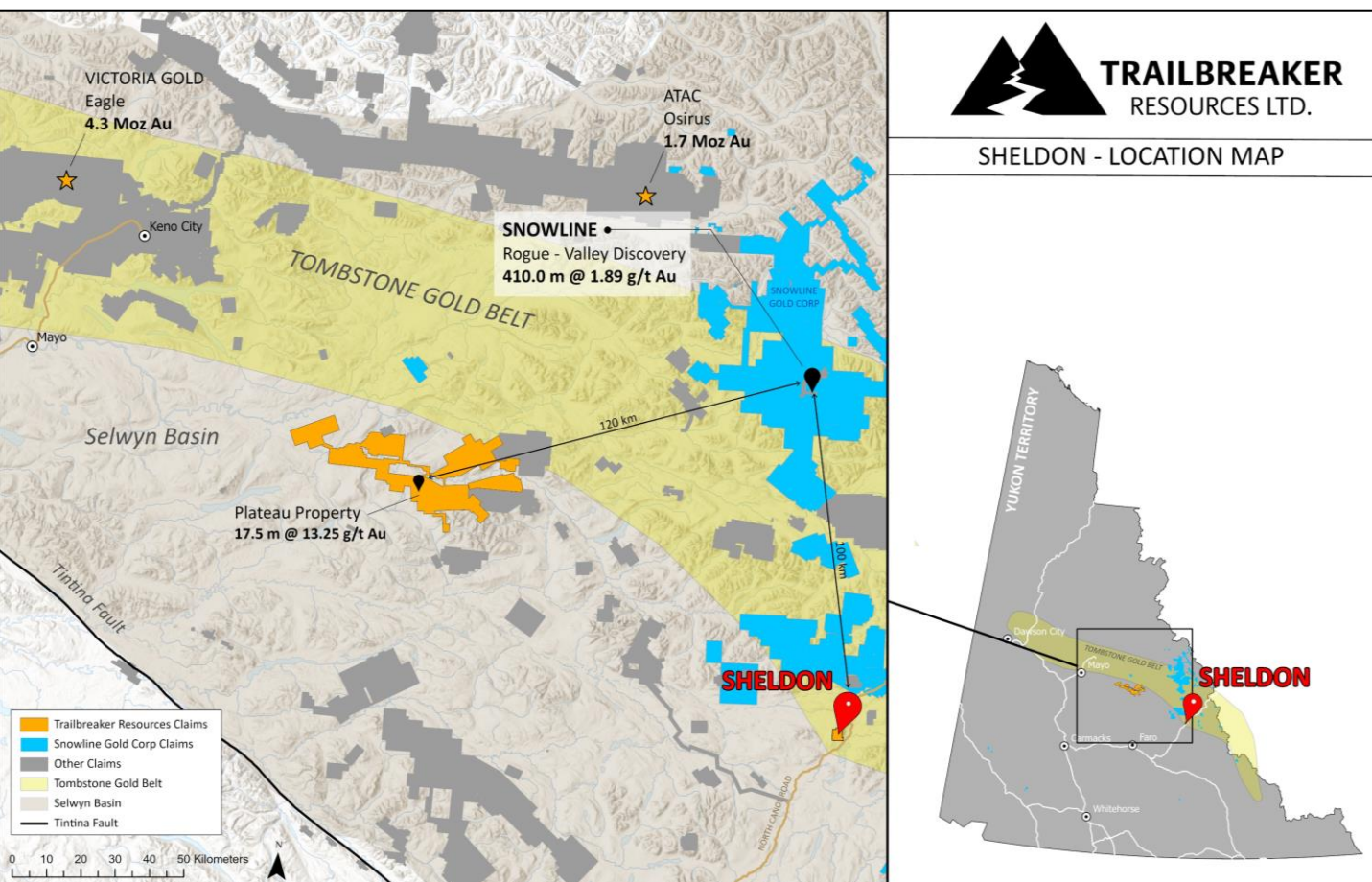
03 SHELDON

- An early-stage **reduced intrusion-related gold system** (RIRGS) analogous to Snowline Gold's Rogue Project, Kinross' Fort Knox Mine, and Victoria Gold's Eagle Mine
- Located in the central Yukon Territory, approximately 110 km NE of Ross River
- 919 ha claim package, **100%-owned by TBK** with no underlying royalties
- **Road access** to within 1 km of property via North Canol Road



03

SHELDON TOMBSTONE GOLD BELT



- RIRGS deposits are characterized by widespread arrays of sheeted auriferous quartz veins, typically forming in brittle carapace at the top of small plutons. These deposits form bulk-tonnage, low-grade Au deposits. They are characterized by Au-Bi-Te-W metal assemblage. Mineralization may also occur as skarns, replacements, and veins in the surrounding hornfelsed sedimentary rocks (Hart, 2007).
- Within Yukon Territory and Alaska, a belt of RIRGS are recognized, referred to as the Tombstone Gold Belt within the larger Selwyn Basin. The Tombstone Gold Belt is host to significant RIRGS mines including Fort Knox (11 Moz Au) and Eagle (3.8 Moz Au), as well as significant new discoveries such as Snowline Gold's Valley discovery (318.8 m @ 2.55 g/t Au). Mineralization within these deposits is hosted in mid-Cretaceous Tombstone granitic intrusions as sheeted vein arrays.
- Similar characteristics have been observed associated the mid-Cretaceous granitic Sheldon stock.

03

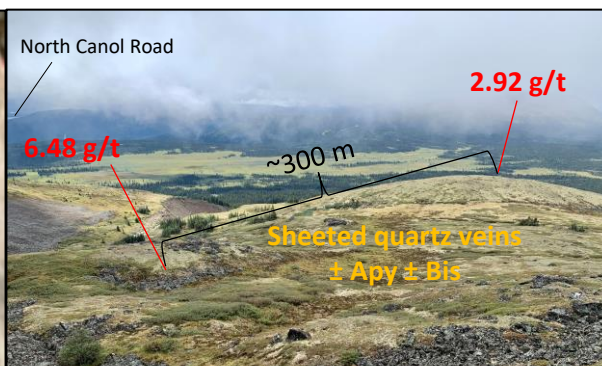
SHELDON

REDUCED INTRUSION-RELATED GOLD (RIRGS)

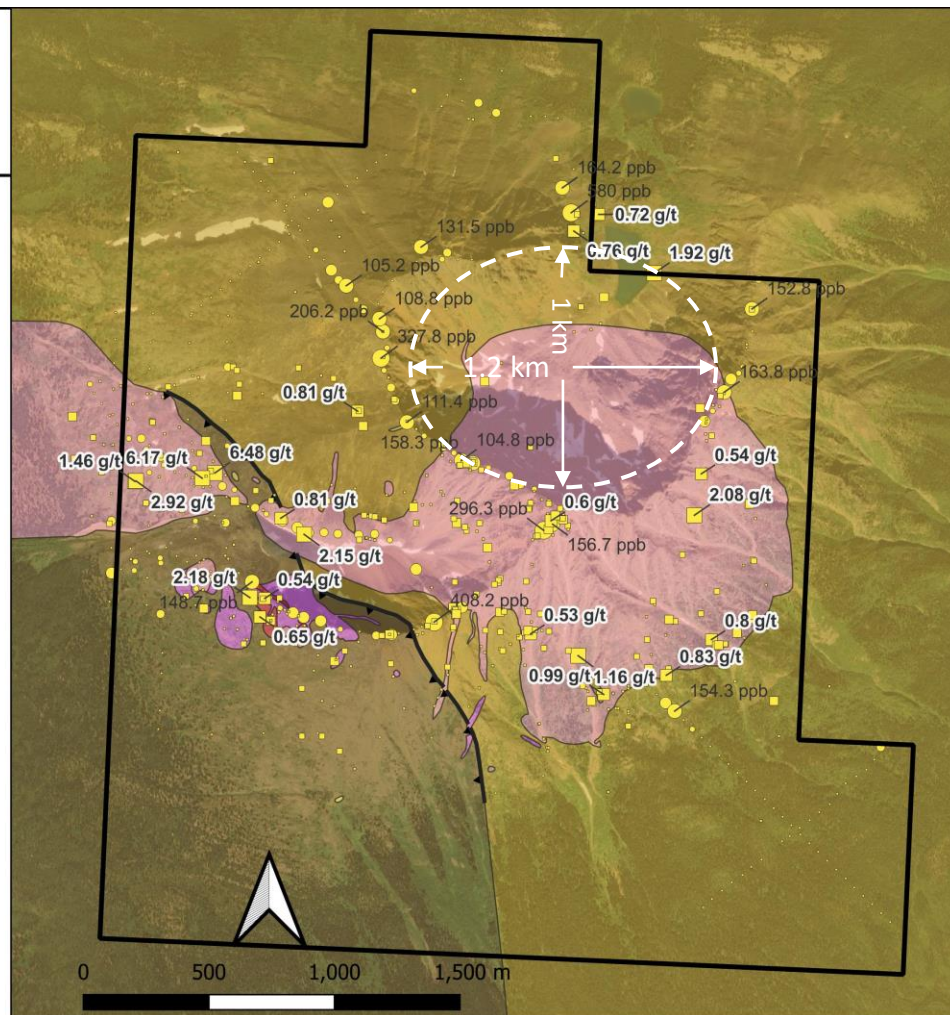
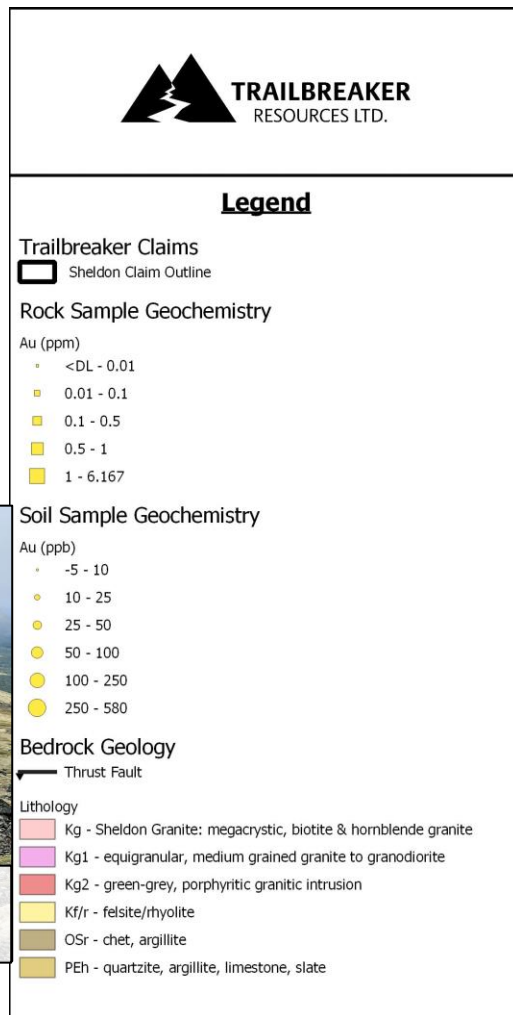
- Areas of potential bulk-tonnage style mineralization
- Mid-Cretaceous granitic stock associated with Tombstone Plutonic Suite
- Gold mineralization is associated with quartz and arsenopyrite veining within the Sheldon stock as well as in surrounding hornfelsed sedimentary rocks.
- Strong Au, Ag, As, Bi, Cu, Sb, Te and W chemical association
- Rock samples up to **6.48 g/t Au**



INTRUSION RELATED MINERALIZATION
Bismuthinite mineralization in quartz-vein hosted within the Sheldon Stock



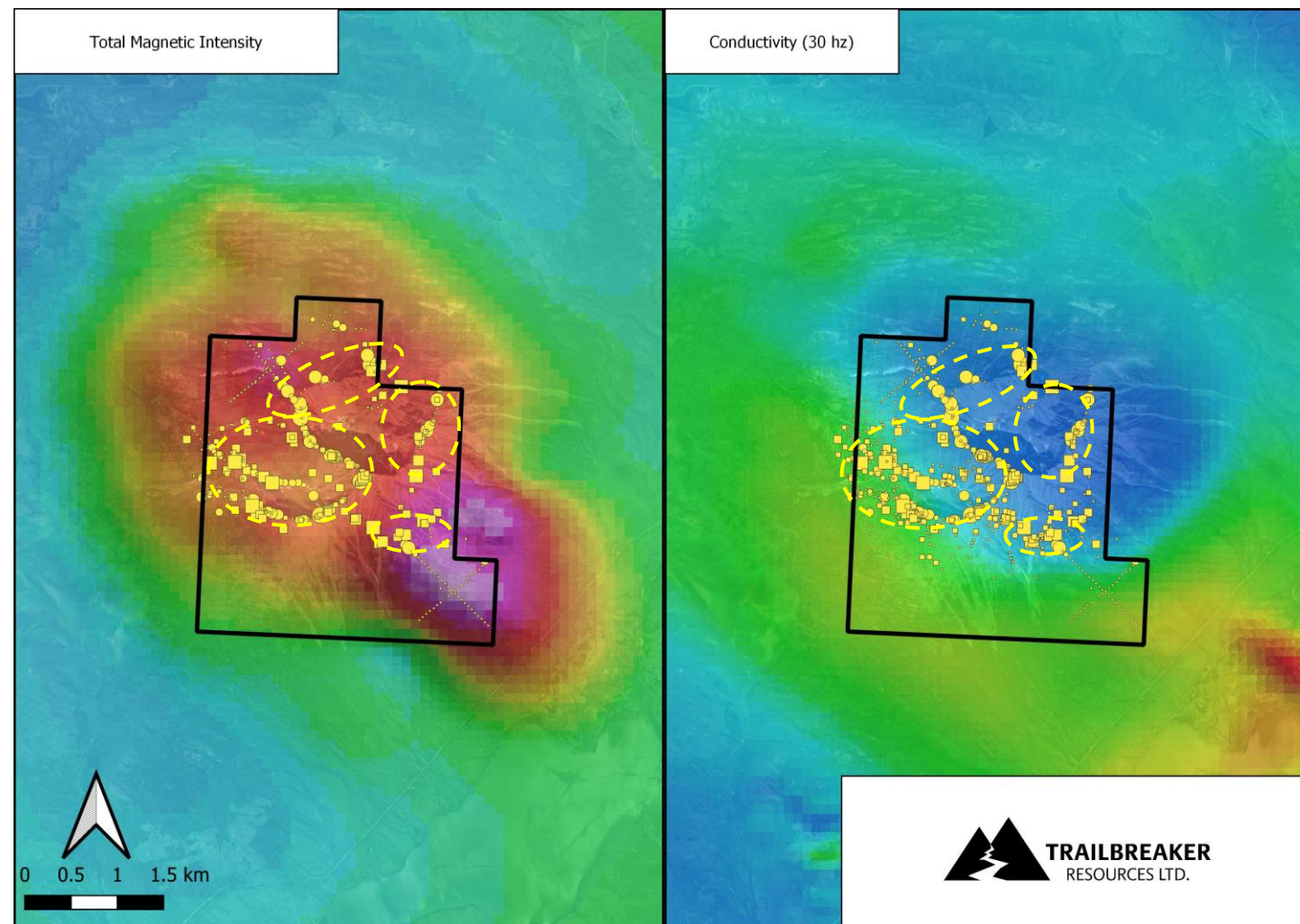
HIGH-GRADE MINERALIZATION
Mellow topography in the area with abundant sheeted quartz veining containing Bismuthinite and gold



03

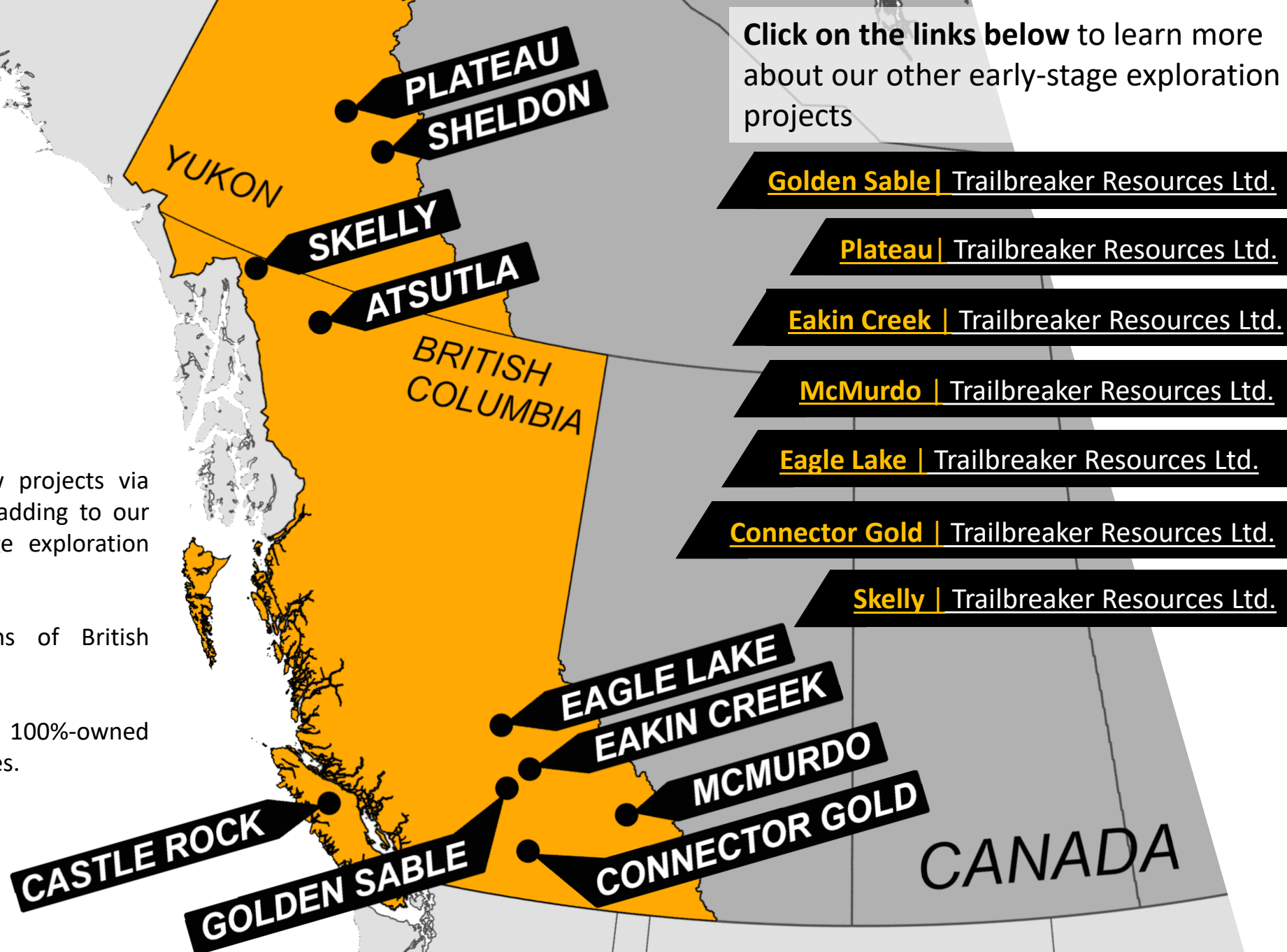
SHELDON EXPLORATION TARGETS

- Underexplored project with only short campaigns of surface work and no drilling
- Au in rock and soil coincident with favourable geophysical features and sheeted quartz veining within the Sheldon Stock
- Potential for both exposed and buried RIRGS centers on the property
- Next recommended phase of work to include detailed magnetic survey, geological mapping, and drill testing highest priority targets



04 Other Projects

- We are continually generating new projects via staking and property acquisitions , adding to our portfolio of high quality, early-stage exploration projects.
- Focused on underexplored regions of British Columbia and the Yukon Territory.
- Majority of the projects are 100%-owned properties with no underlying royalties.



04

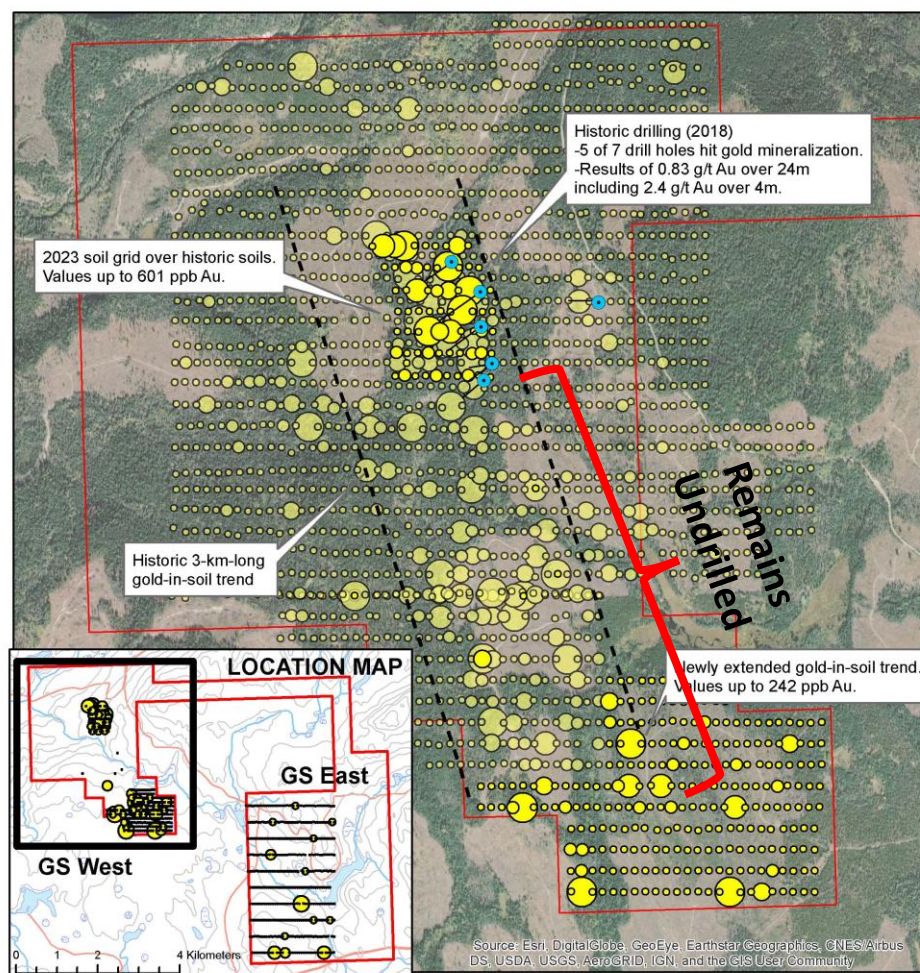
GOLDEN SABLE PROJECT

- An early-stage **intrusion-related gold project**
- Located in the Kamloops Mining District, approximately 75 km northwest of Kamloops.
- 2,568 ha of prospective ground hosting a **4-kilometer-long gold-in-soil anomaly** and significant first-pass historical drill intercepts (0.83 g/t Au over 24 meters).

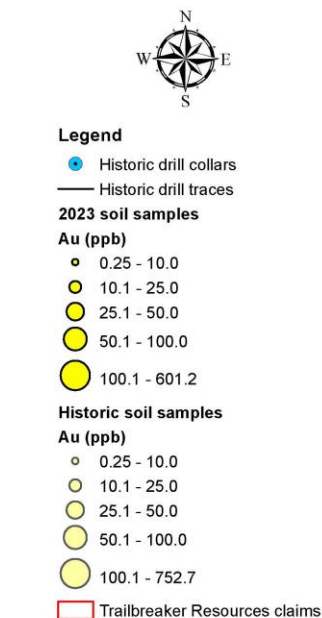


04

GOLDEN SABLE PROJECT SUMMARY



Golden Sable Property 2023 Exploration Results at GS West



Date: September 6, 2023
Datum: UTM NAD83, Zone 10
NTS Mapsheets: 092p02, 092p07

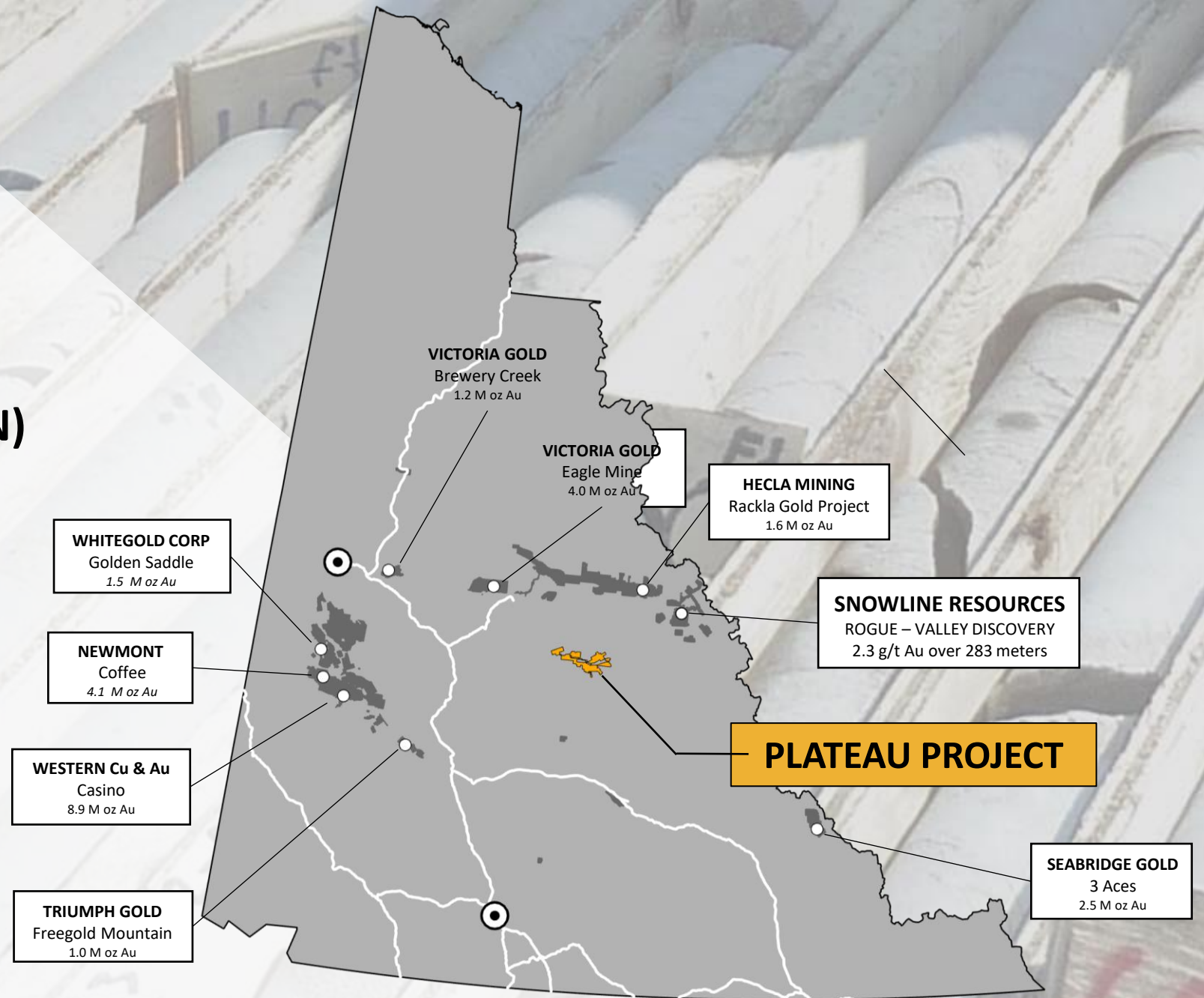
0 0.25 0.5 1 Kilometers



- Situated in the Quesnel tectonic terrane that is host to some of BC's largest historic and currently producing mines and many advanced-stage copper and gold projects.
- Middle to Upper Triassic volcanics and sedimentary rocks of the Nicola Group underlie the claim blocks. The property straddles the margins of a large early Jurassic hornblende-biotite granodiorite pluton with prevalent younger mafic and andesite dikes.
- Hosts a 4-km long gold-in-soil anomaly that is largely un-drilled
- An inaugural, 1,339-metre drill program conducted by Sable Resources during 2018 encountered gold mineralization in 5 of 7 blind drill holes testing the soil anomaly. Results include an intersection of **0.83 g/t gold over 24m including 2.4 g/t gold over 4m.**
 - Gold mineralization was found to be associated with mafic and intermediate dike swarms trending northwest – southeast along the granitic contacts
- No follow-up drilling has been conducted to date and the majority of the 4-kilometre-long gold-in-soil anomaly remains untested.

05 PLATEAU PROJECT (YUKON)

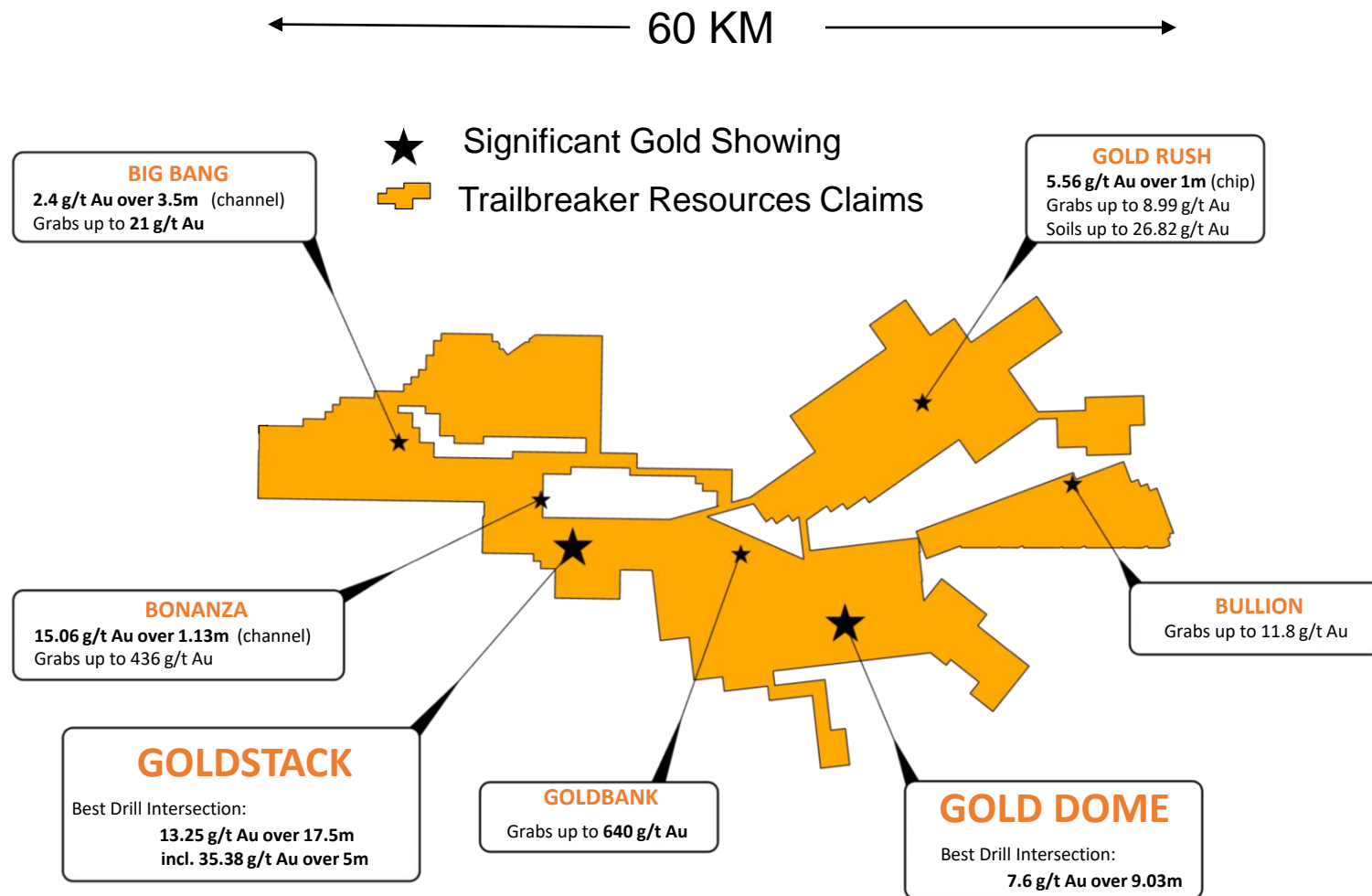
Discovered in 2010, the Plateau project represents a district-scale gold system in the Selwyn Basin, 120 km east of Mayo, YT. The property covers 59,219 hectares of prospective ground. Gold mineralization occurs across 50 km of strike within extensive sequences of quartz stockwork and hydrothermal breccias.



05

PLATEAU PROJECT SUMMARY

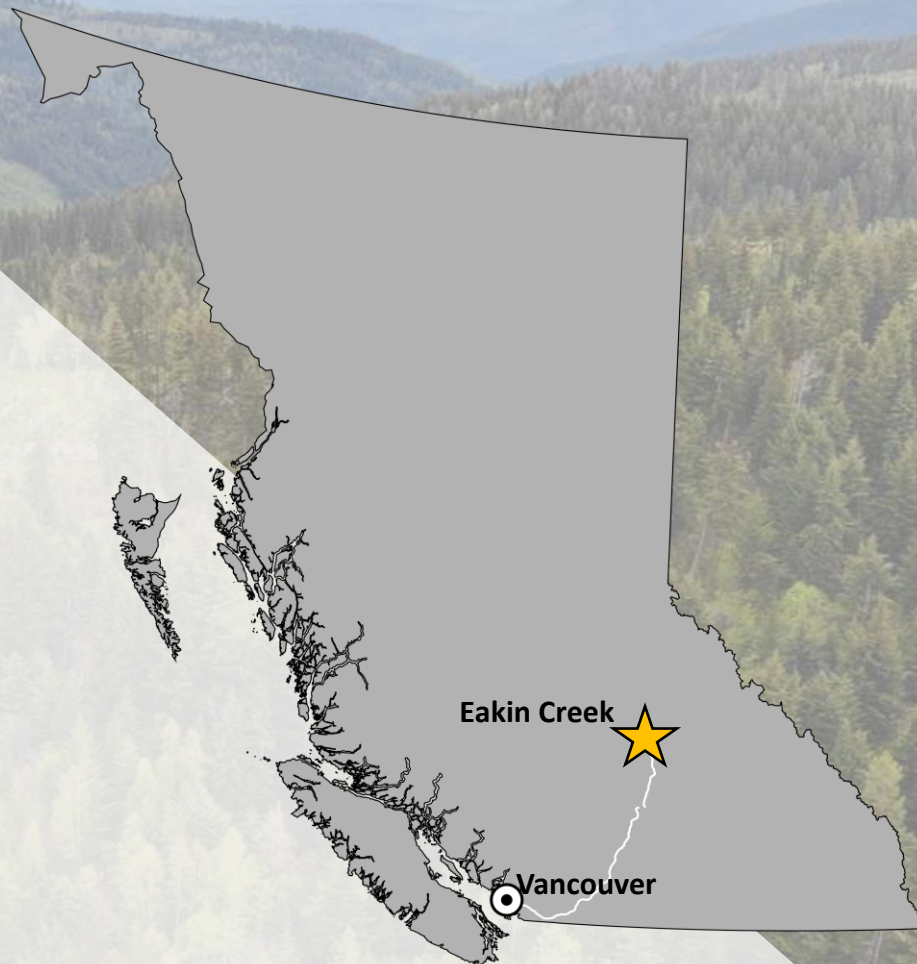
- Property spans 60 km covering 592 square kilometers.
- Hosts a 50 km trend of high-grade gold discoveries.
- 7 main gold zones discovered to date.
- Widespread coarse visible gold mineralization in hydrothermal quartz breccias and stockwork.
- Significant drill results include **13.25 g/t Au over 17.5m** at the Goldstack Zone and **7.6 g/t Au over 9.03m** at the Gold Dome Zone (18km away).
- Good access with two float plane docks on two separate lakes located on the property.
- Since the discovery in 2010, the property has seen relatively little exploration. From 2012 to 2017 Trailbreaker drilled 68 diamond drill holes totaling 7026 meters. In 2017, an option agreement was reached with Newmont Mining. Under Newmont, an additional 26 holes were drilled in 2018 totaling 7752 meters.



06

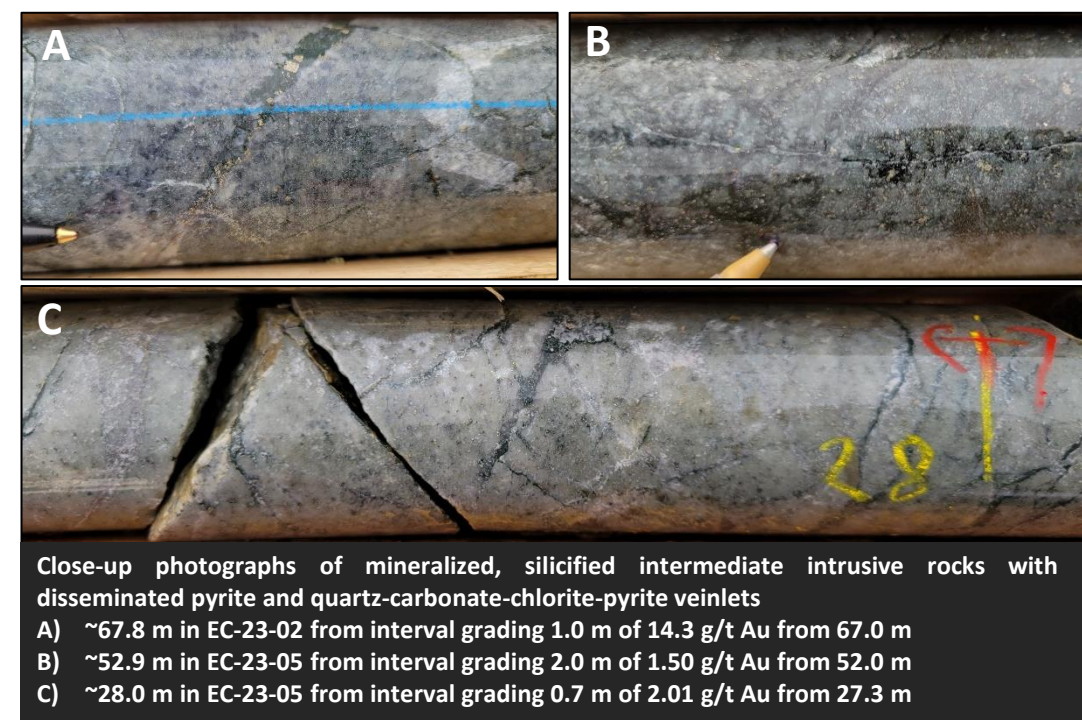
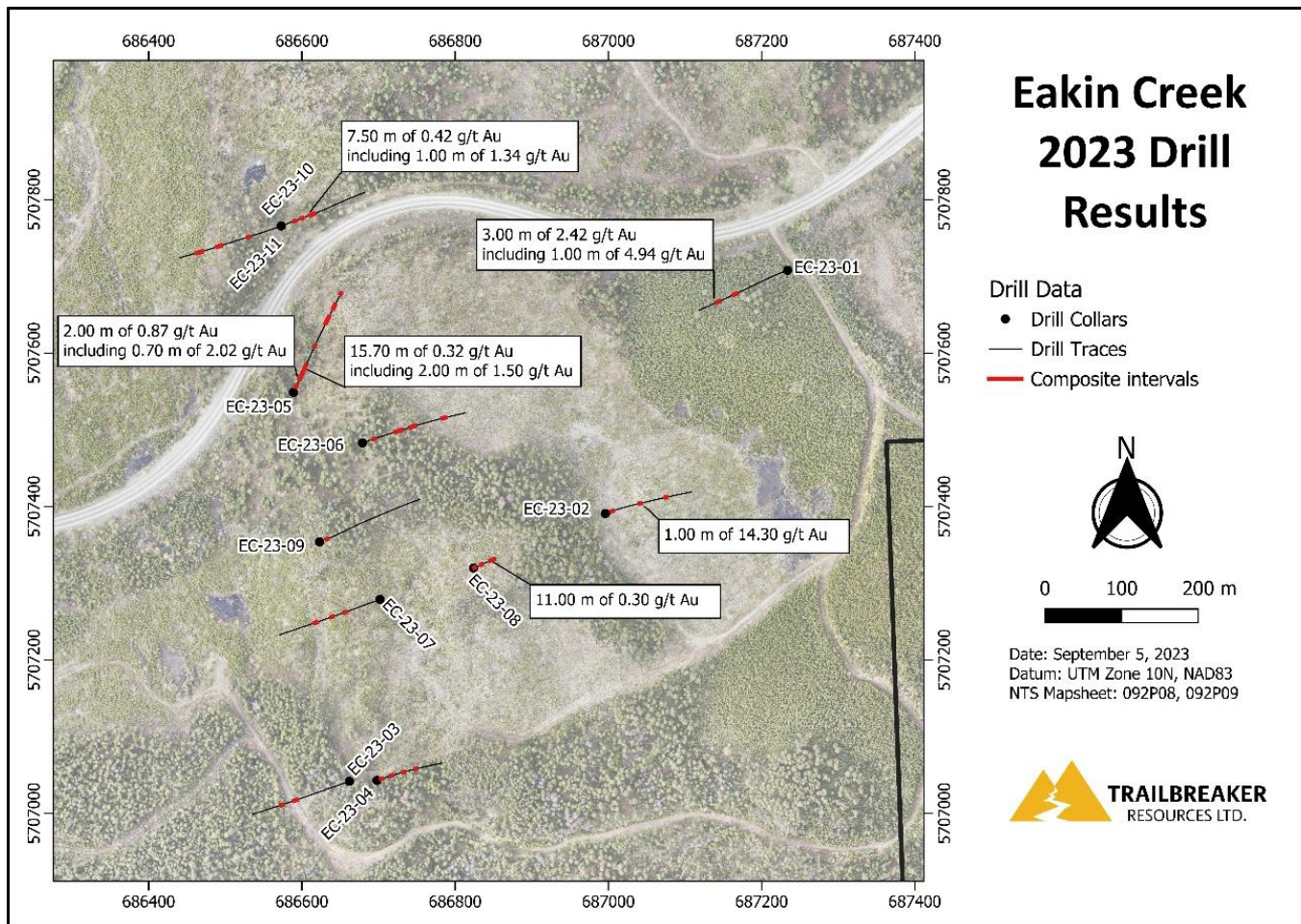
EAKIN CREEK PROJECT

- Located 100 km north of Kamloops, and road accessible via Highway 24 and well-maintained forestry roads
- 100%-owned by Trailbreaker Resources with no underlying payments or royalties
- Covers 1,610 hectares of prospective ground that drains into placer gold-bearing Eakin Creek
- Coincident MMI gold-in-soil and resistivity and chargeability anomalies define surficial expression of mineralization
- First-pass drill testing confirmed mineralization in bedrock in all eleven holes



06

EAKIN CREEK PROJECT MAIDEN DRILL PROGRAM RESULTS



HOLE ID	FROM (m)	TO (m)	INTERVAL (m)	Au (g/t)
EC-23-01	145.00	148.00	3.00	2.42
<i>Including</i>	<i>147.00</i>	<i>148.00</i>	<i>1.00</i>	<i>4.94</i>
EC-23-02	67.00	68.00	1.00	14.30
EC-23-05	27.30	29.30	2.00	0.87
<i>Including</i>	<i>27.30</i>	<i>28.00</i>	<i>0.70</i>	<i>2.02</i>
EC-23-05	38.30	54.00	15.70	0.32
<i>Including</i>	<i>52.00</i>	<i>54.00</i>	<i>2.00</i>	<i>1.50</i>
EC-23-08	156.90	167.90	11.00	0.30
EC-23-11	57.50	65.00	7.50	0.42
<i>Including</i>	<i>61.00</i>	<i>62.00</i>	<i>1.00</i>	<i>1.34</i>

07 MCMURDO PROJECT

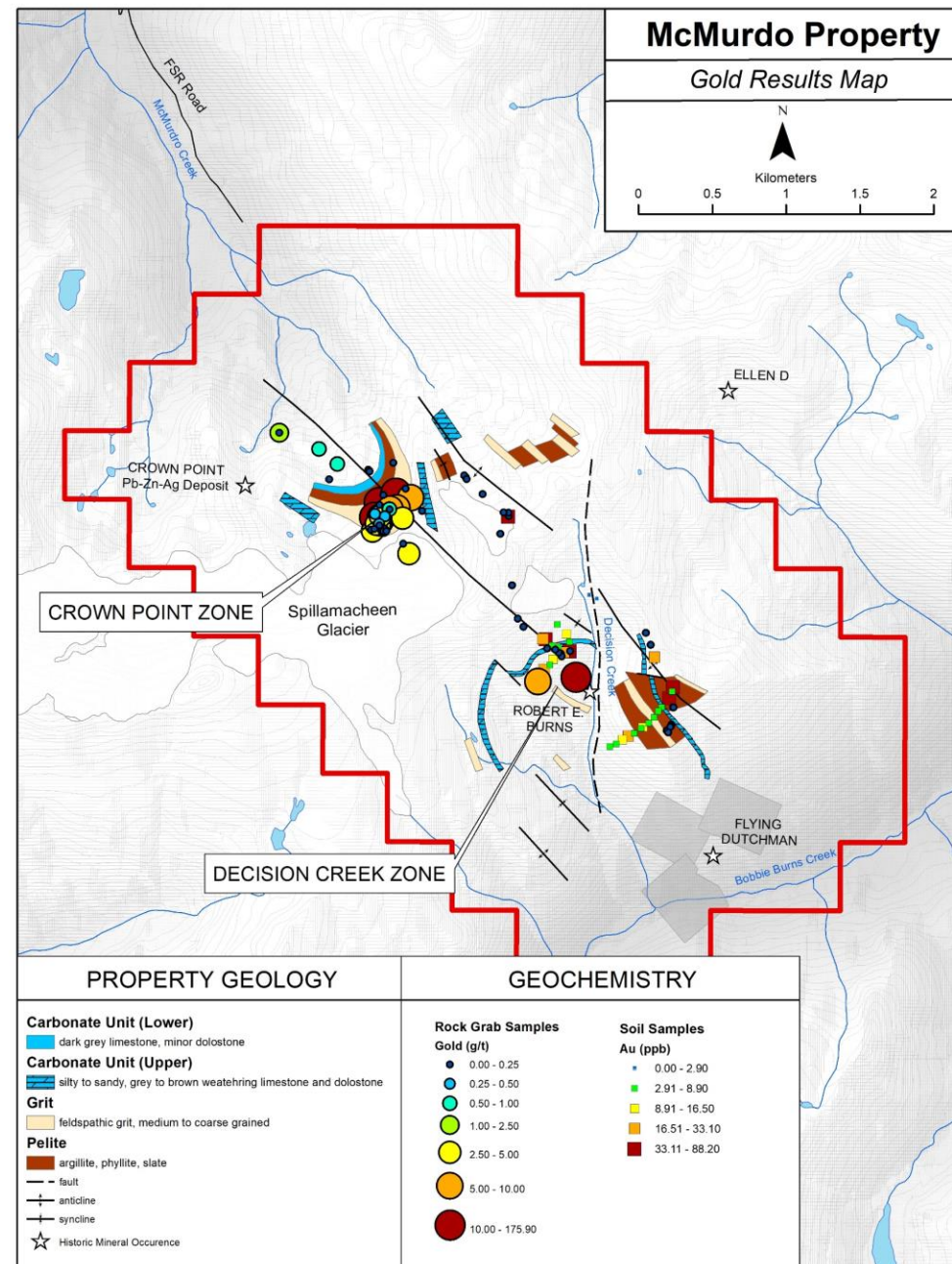
- Located in the northern Purcell Mountains of southeastern BC, 30 km southwest of Golden, BC
- Road accessible via maintained active logging roads
- 100%-owned by Trailbreaker with no underlying royalties
- Rich mining history with the discovery of high-grade gold veins and strata-bound polymetallic Pb-Zn-Ag replacement-style mineralization in the early 1890s with a couple small scale mines operating intermittently in the early 1900s.
- 2020 property evaluation program extended the footprint of historic high-grade gold showings in an area with recent glacial retreat. Grab samples from pyritic quartz veins returned values **up to 5.13 oz/ton Au (gold)**.



07

MCMURDO PROJECT SUMMARY

- The claims cover the past producing Roberts E. Burns gold mine and stamp mill, which operated between the 1890s and 1930s. Historic records show that ore obtained from auriferous quartz veins averaged 25.7 g/t Au.
- Potential for bulk-tonnage target with widespread auriferous quartz veining
- The property is composed of a thick sequence of Proterozoic marine sedimentary rocks exposed in the core of the northwest-trending Purcell Anticlinorium and intruded by Mesozoic intrusions at the western boundary
- Narrow, discontinuous, north-south striking quartz veining is primarily confined to the coarser textured grits and quartzites. These veins locally host gold mineralization with disseminated pyrite.
- Work completed by Trailbreaker has successfully expanded historical showings approximately 600 m further uphill in an area with recent glacial retreat. This new zone, coined “Crown Point” is a 400 X 300-meter area containing auriferous quartz veins hosted in a micaceous grit unit within the crest of an anticline fold hinge.
 - Select grab samples from the veins assay **up to 175.9 g/t (5.13 oz/ton) Au**.
- Sampling from historic trenches at the Decision Creek Zone produced rock samples assaying **up to 76 g/t (2.22 oz/ton) Au**. These samples are located along the same regional scale anticline structure as the newly discovered Crown Point zone.



08 EAGLE LAKE PROJECT

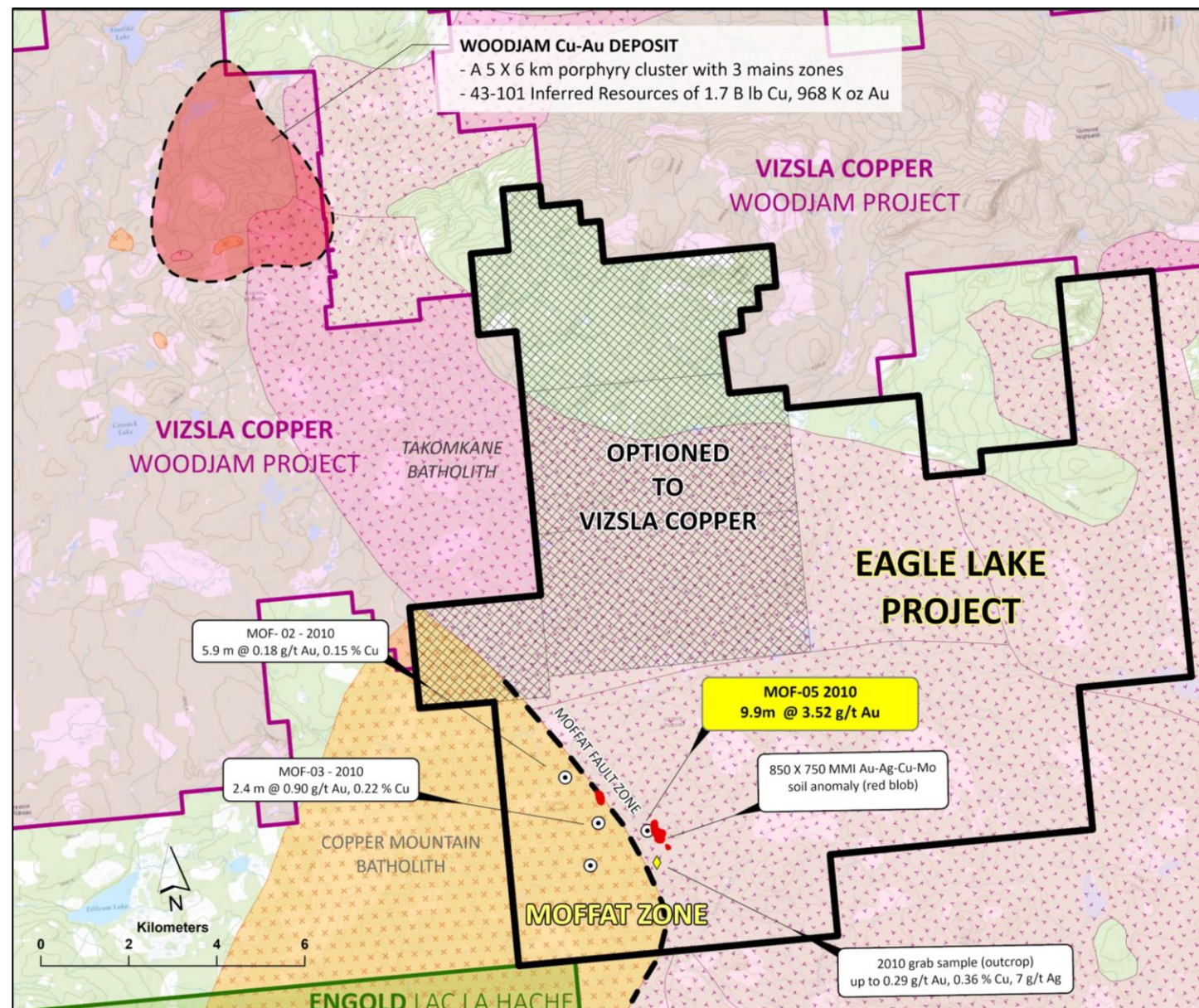
- Located in central BC, ~55 km east of Williams Lake, with access via a network of logging roads
- Contiguous to Vizsla Copper's advanced stage Woodjam Cu-Au porphyry project (1.7B lb Cu, 968k oz Au)
- Optioned the northwestern portion (6,482 ha) of the property to Vizsla Copper, while retaining the remainder, including the Moffat zone
- Previous drilling at the Moffat zone intersected **9.9 m of 3.52 g/t Au**
- A 2022 MMI survey delineated an **850 x 700 m Au-Cu-Ag-Mo** anomaly east of historic drilling



08

EAGLE LAKE PROJECT SUMMARY

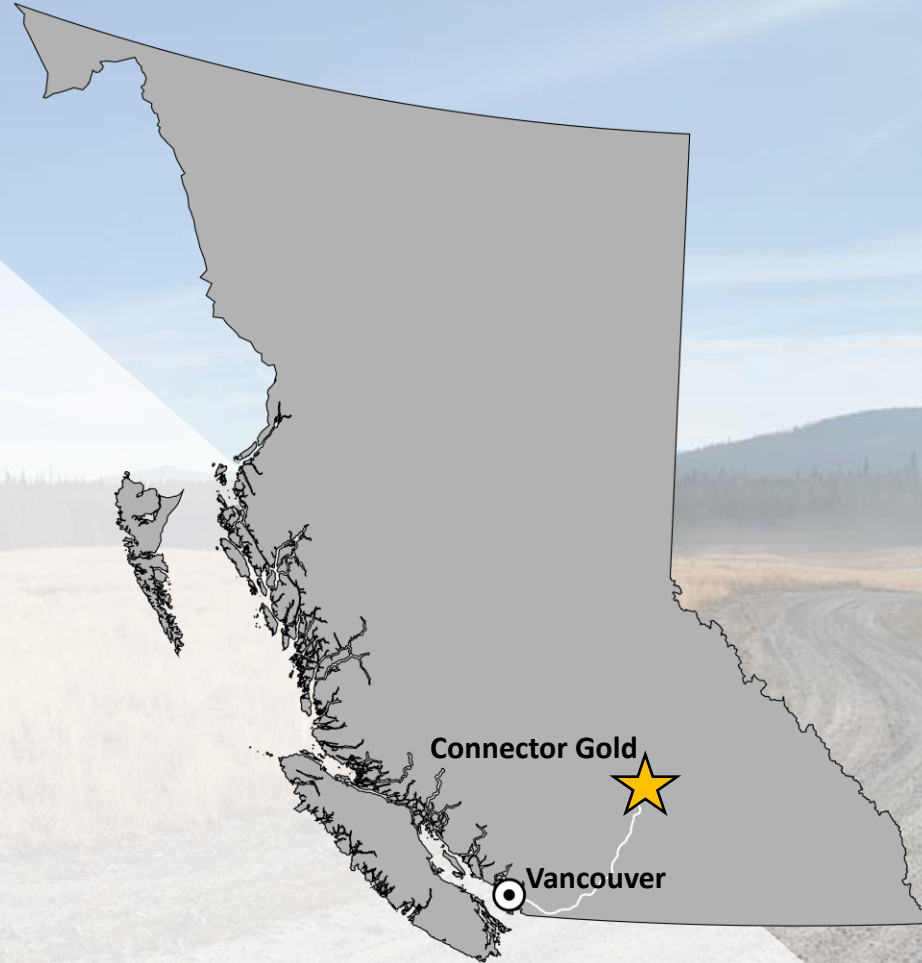
- Within Quesnel tectonic terrane that is host to some of BC's largest mines
- Underlain by late Triassic to early Jurassic intrusive rocks of the Takomkane Batholith with minor late Triassic volcanic rocks of the Nicola Group
- Drilling in 2010 encountered significant Au mineralization with intersections up to **3.52 g/t Au over 9.9 m**
- The Moffat zone is defined by Cu-mineralization in outcrop with coincident broad chargeability and Cu-Mo soil anomalies and minor Au and Cu results from drilling
- Mineralization is associated with a porphyritic monzonite
- An MMI soil survey in 2022 defined an additional 850 x 700 m Au-Ag-Cu-Mo anomaly to the east of the highest historic drill results
- It is believed this soil anomaly may represent a surficial expression of the drill results and represents a strong target to follow up with additional drilling



09

CONNECTOR GOLD PROJECT

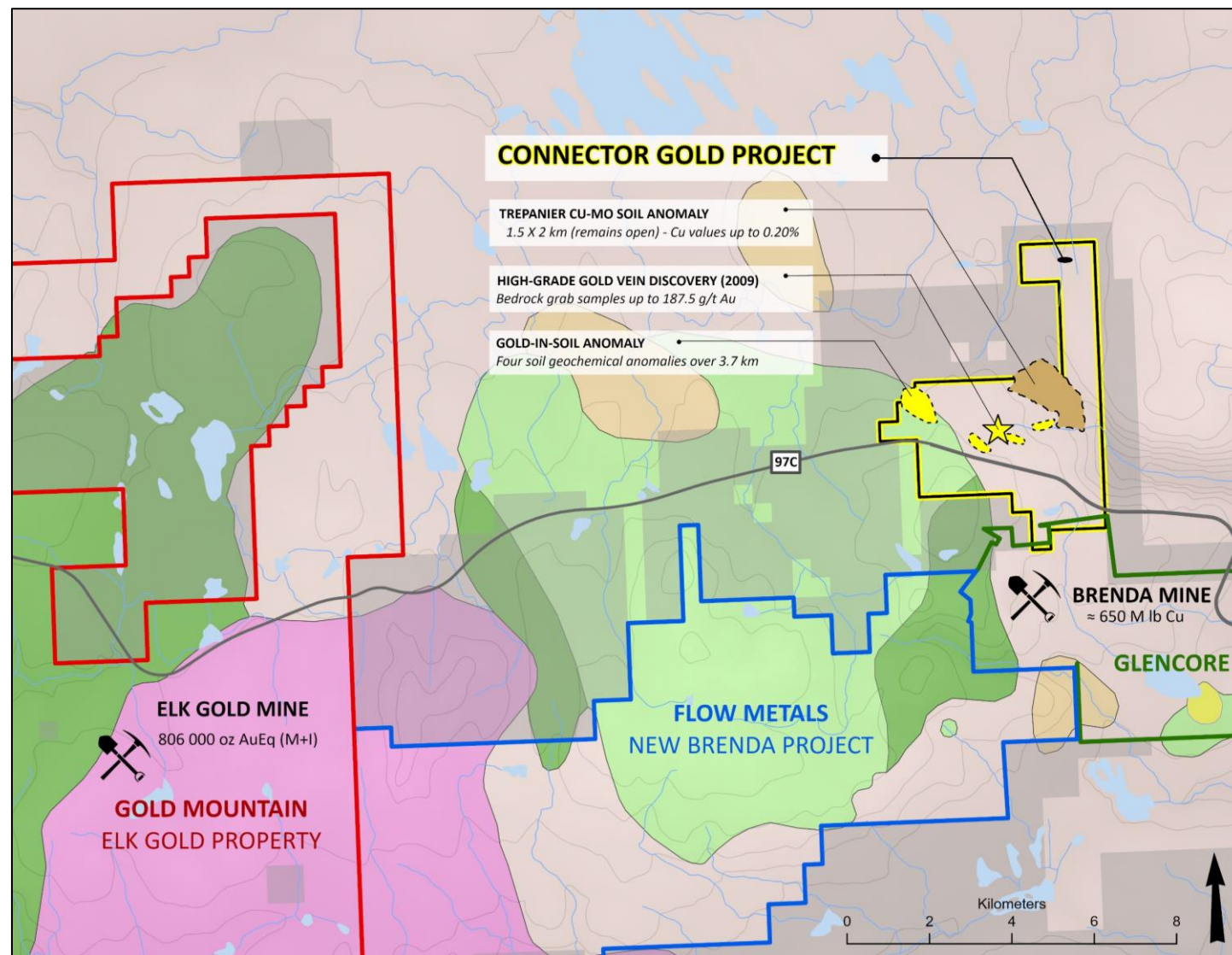
- Located in southern BC, 40 km west of Kelowna, with road access via highway 97C and a series of logging roads
- 1,894 ha claim package that is 100%-owned by Trailbreaker with no underlying royalties
- Adjacent to historic Brenda Mine, a Cu-Mo porphyry deposit, as well as proximal to the 1 Moz Au currently producing Elk gold mine, which is 15 km southwest of Connector Gold
- Cu-Mo mineralization has been encountered on the Connector Gold property, as well as high-grade gold-bearing vein system
- Gold-bearing shear zones and quartz veins encountered in trenches over a 900-meter area returned rock samples assaying up to **187.5 g/t Au and 71.8 g/t Ag**



09

CONNECTOR GOLD PROJECT SUMMARY

- Located in the southern Quesnel terrane, which is host to many of BC's active and past-producing copper and gold mines
- Past exploration had primarily focussed on Cu-Mo porphyry mineralization, until soil sampling and trenching in 2009 discovered a high-grade gold-bearing vein system assaying **up to 187.5 g/t Au and 71.8 g/t Ag**
- Gold-in-soil anomalies correspond with the high-grade gold veins, suggesting that there may be up to 1000 m of strike length to the system
- Additionally, two Cu-Mo soil anomalies are present on the property. The first is in the southeastern portion of the property adjacent to the Brenda Mine. The second is the "Trepanier" zone which is an ~1.5 x 2.0 km Cu-Mo soil anomaly.
- Limited drilling in the 1960s-1980s encountered notable Cu-Mo intersections including **24 m of 0.34% Cu and 0.05% Mo**



10 SKELLY PROJECT

- Located in NW BC, 100 km southwest of Whitehorse, and road accessible via South Klondike Highway (2)
- Same geological setting and geochemical signature to the Golden Triangle
- First-pass prospecting discovered previously undocumented historic exploration shafts in quartz-sulphide veins with grab samples assaying up to **35.5 g/t Au** and **488 g/t Ag**



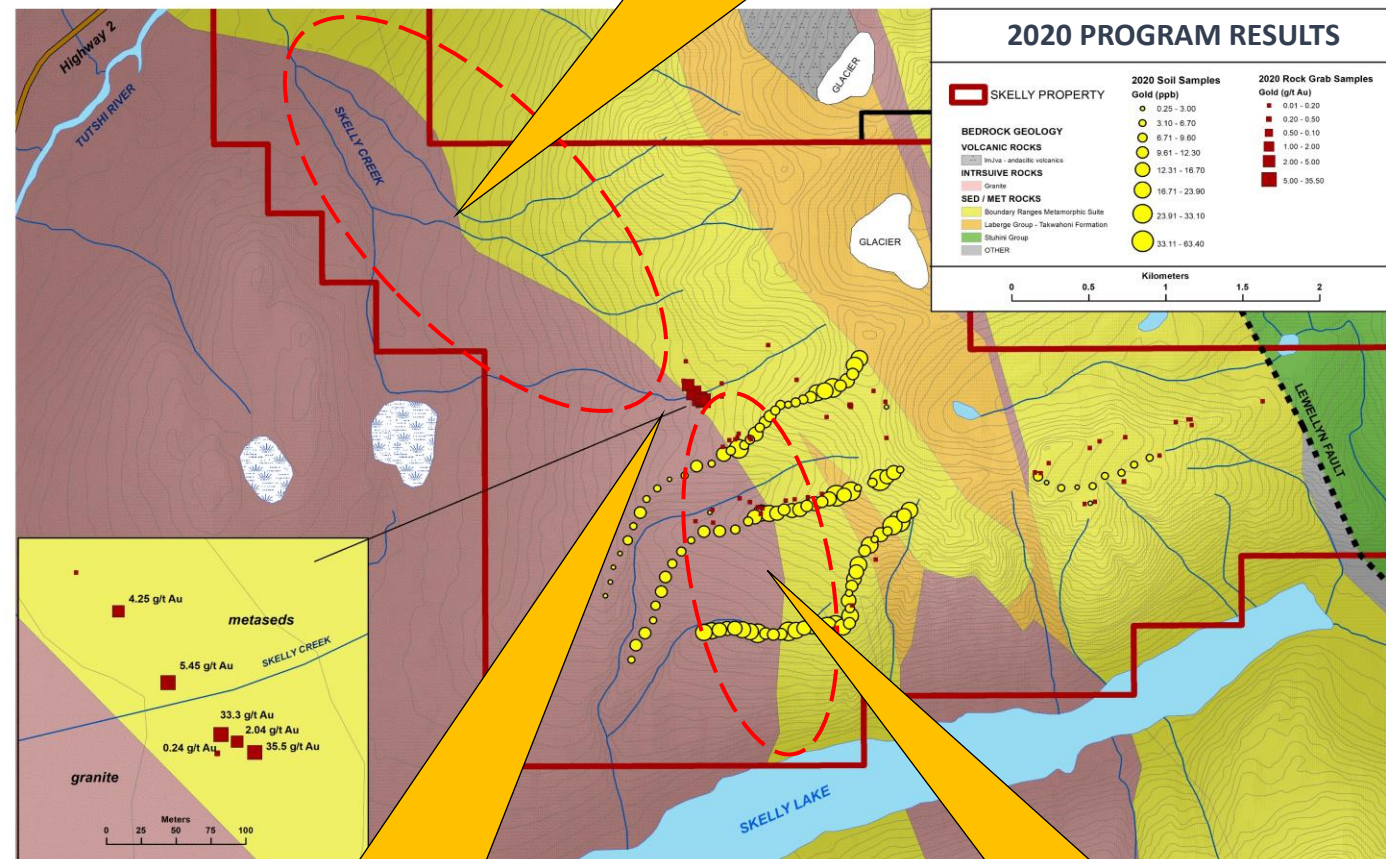
10

SKELLY PROJECT SUMMARY

- South Klondike Highway runs through the northwest portion of the property providing **excellent road access from the port city of Skagway, USA and Whitehorse, Yukon Territory, Canada.**
- Hosted along the 100 km-long **Llewellyn thrust fault** that is closely associated with the historic **high-grade Engineer gold mine**
- In the northern-most end of the Stikine Terrane that contains both the Stuhini volcanic package and a strong Au-As geochemical signature
- Mineralization includes: gold–silver quartz sulphide veins hosted in both intrusive and metasedimentary rocks, disseminated pyrite hosted in metasedimentary rocks, and lastly disseminated arsenopyrite hosted in intrusive dikes.
- Auriferous quartz veins were sampled over a 100m northwest-trending shear zone that parallel the granite contact and remains open along strike

HIGH PRIORITY TARGET

Future exploration efforts will focus along the northwest-trending granite contact with strong potential of expanding the strike length of the known quartz veins and ideally find new vein systems altogether.



>100m trend of gold-bearing veins

Grab samples up to
35.5 g/t Au in quartz veins

HIGH PRIORITY TARGET

Future exploration efforts will follow up on arsenopyrite sampled in granite dikes and elevated gold values in soil samples

INVESTMENT SUMMARY

TRAILBREAKER RESOURCES LTD

WHY INVEST

- TRACK RECORD OF SUCCESSFUL PROJECT GENERATION
- SEASONED TEAM OF GEOLOGISTS AND PROSPECTORS
- NEW DISCOVERIES WITH DISTRICT-SCALE POTENTIAL
- NUMEROUS DRILL-READY QUALITY PROJECTS
- TIGHT SHARE STRUCTURE
- WELL POSITIONED FOR GROWTH
- MINING-FRIENDLY BRITISH COLUMBIA AND YUKON TERRITORY
- PRECIOUS METAL FOCUSED

FUTURE OUTLOOK

- CONDUCT FIRST-PASS DRILL TESTING OF HIGH-PRIORITY TARGETS
- CONTINUE TO ADVANCE OUR ENTIRE PROJECT PORTFOLIO THROUGH SYSTEMATIC EXPLORATION
- CONTINUE TO GENERATE AND MAINTAIN HIGH QUALITY, EARLY-STAGE EXPLORATION PROJECTS WITH A FOCUS ON PRECIOUS METALS

FORGING THE PATH TOWARD DISCOVERY

Please contact us for more information:

Daithi Mac Gearailt, *President and CEO*

Tel: (604) 681-1820

info@trailbreakerresources.com



www.trailbreakerresources.com

