

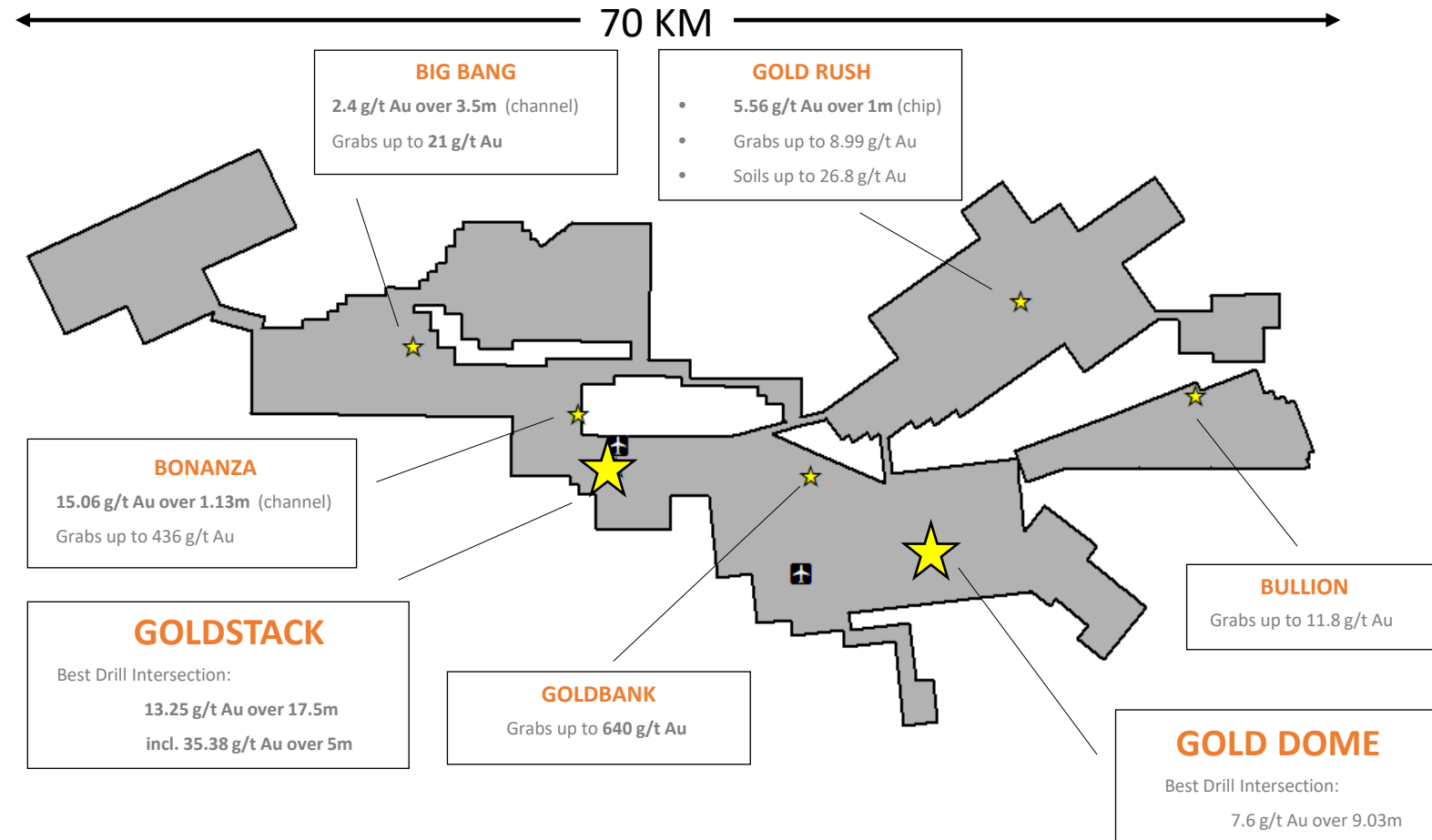
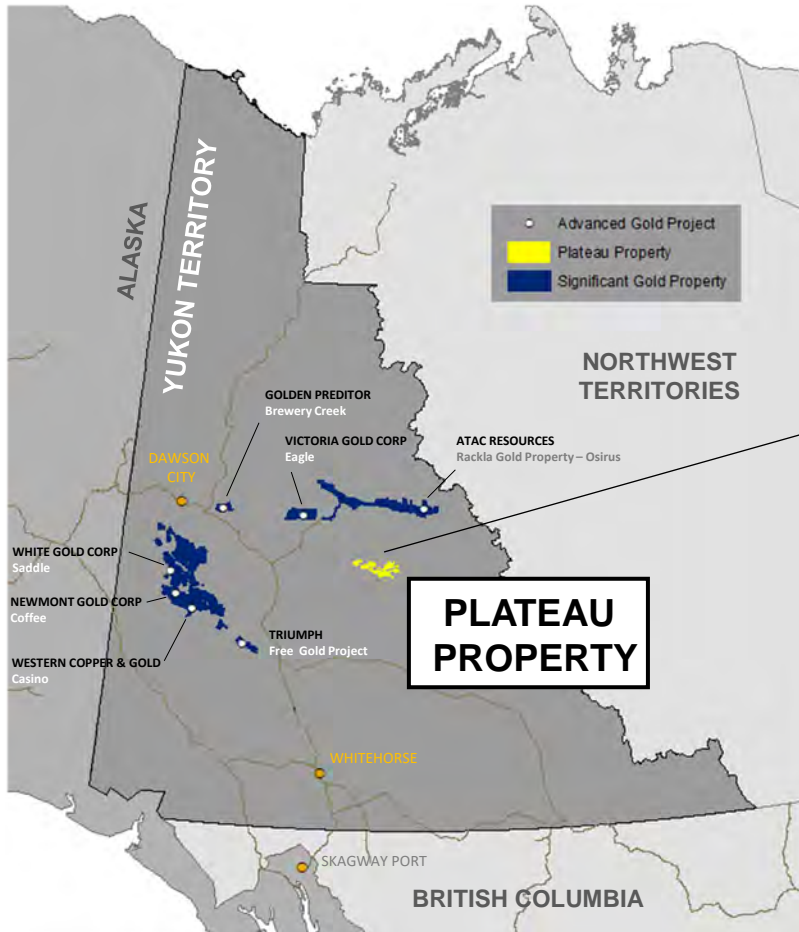
**TRAILBREAKER**  
RESOURCES LTD.



**PLATEAU PROPERTY**



## Plateau Gold Project – A New, District Scale, High Grade Gold System





# PROJECT TIMELINE

**2011**

## CONCEPTION TO DISCOVERY

- Target generation and claim staking
- Reconnaissance ridge-and-spur soil sampling and prospecting discovered anomalous gold at Gold Rush, Gold Dome and Goldstack zones

**2013**

## DISCOVERY DRILLING

- Significant drill program (1183m)
- Goldstack - 2.28 g/t Au over 53m incl. 10.91 g/t Au over 10m
- Gold Dome - 7.60 g/t Au over 9.03m
- Construction of Spit Lake Camp and float plane dock)

**2015**

## DISCOVERY DRILLING

- 2493m drilled
- Discovery of lower zone at Gold Dome - 12.65 g/t Au over 0.5m
- Goldstack - 13.25 g/t Au over 17.5m (true width) incl. 35.28 g/t Au over 5.7m
- Geological mapping

**2017 - 2019**

## NEWMONT JOINT VENTURE

- Construction of second camp and float plane dock at Goldstack Lake
- 2973m drilled in 2017
- 7752m drilled in 2018
- Large geophysical surveys – airborne mag, SkyTEM, LiDAR
- Regional stream sediment surveys (BLEG)



2011

2020

**2012**

## PROSPECTING

- Visible gold discovered at Gold Dome and Goldstack
- Goldbank trend discovered
- Additional staking (666 claims staked)
- Small drill program (376m)

**2014**

## GEOPHYSICS

- 3D IP survey conducted at Gold Dome

**2016**

## NEW ZONES

- Discovery of Bonanza, Big Bang, and Bullion gold zones extending mineralization to 50 km strike
- Additional 418 claims staked

## GOLDSTACK DRILLING

- 1569m total
- 6.05 g/t Au over 45.5m

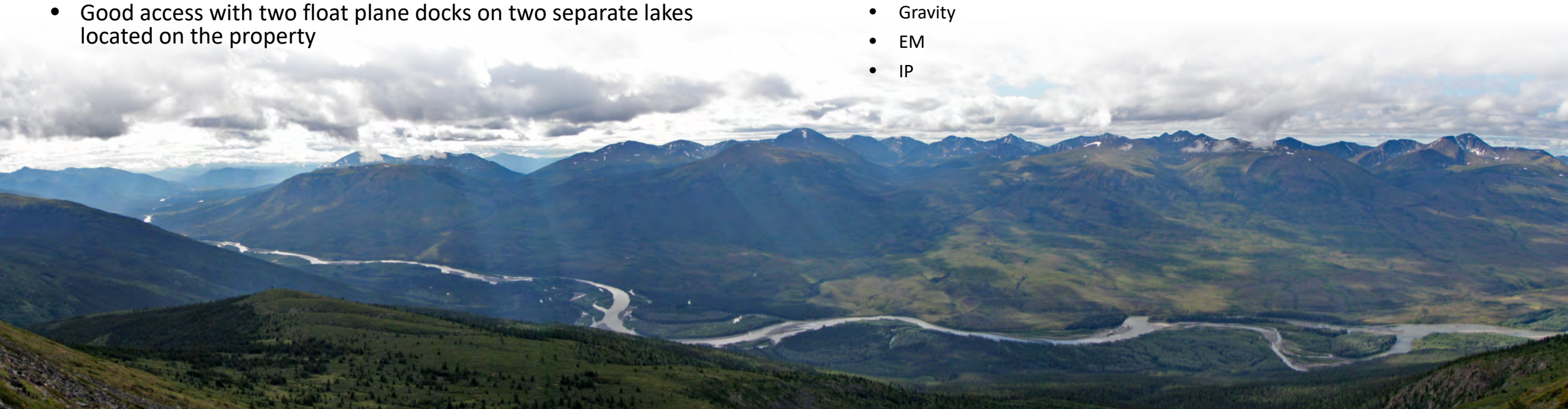
**2020**

## RESTRUCTURING

- Appointment of new CEO, Daithi Mac Gearailt
- Share rollback to <10M shares fully diluted
- Assembly of geological team

# PROPERTY OVERVIEW

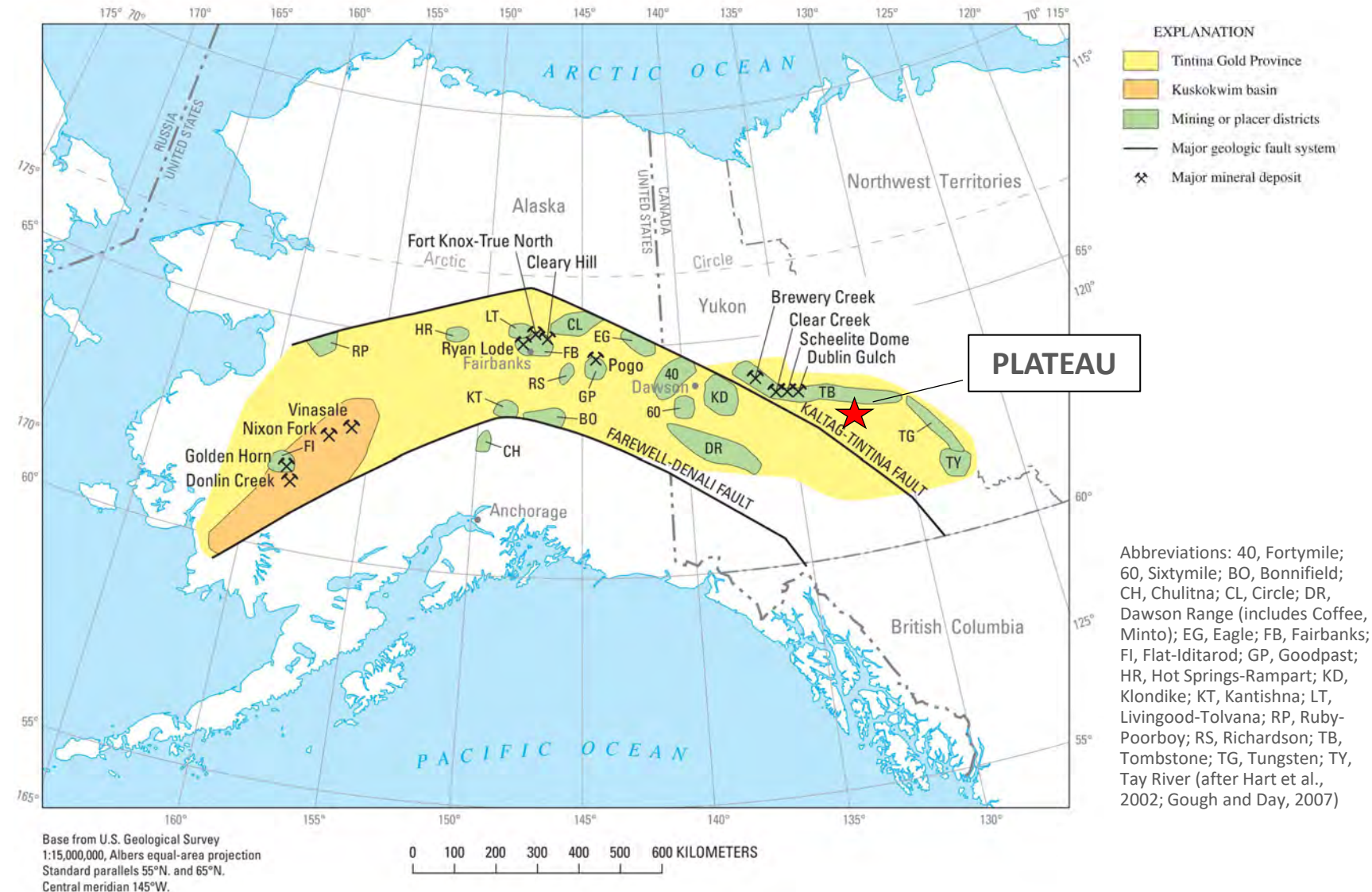
- Newly discovered, district scale gold system in the Selwyn Basin, 120 km east of Mayo, YT.
- Staked in 2010 as a grassroots exploration program with no previous gold exploration documented in the area.
- Property spans 70 km of strike covering 662 square kilometers
- Represents a 50 km trend of a high-grade gold discoveries
- 7 main gold zones discovered to date
- Wide spread coarse visible gold mineralization in hydrothermal quartz breccia and stockworks
- Good access with two float plane docks on two separate lakes located on the property
- Recent joint venture with Newmont Mining Corp (2017- 2019) resulted in a magnitude of data that is still currently being reviewed.
  - 10,726 meters of diamond drilling (49 holes)
  - Property-scale airborne geophysical surveys
    - EM (SkyTEM) survey
    - Magnetic
    - Radiometric
    - LiDAR
  - Proprietary regional stream geochemistry (BLEG)
  - Ground geophysics at Goldbank and Goldstack
    - Gravity
    - EM
    - IP





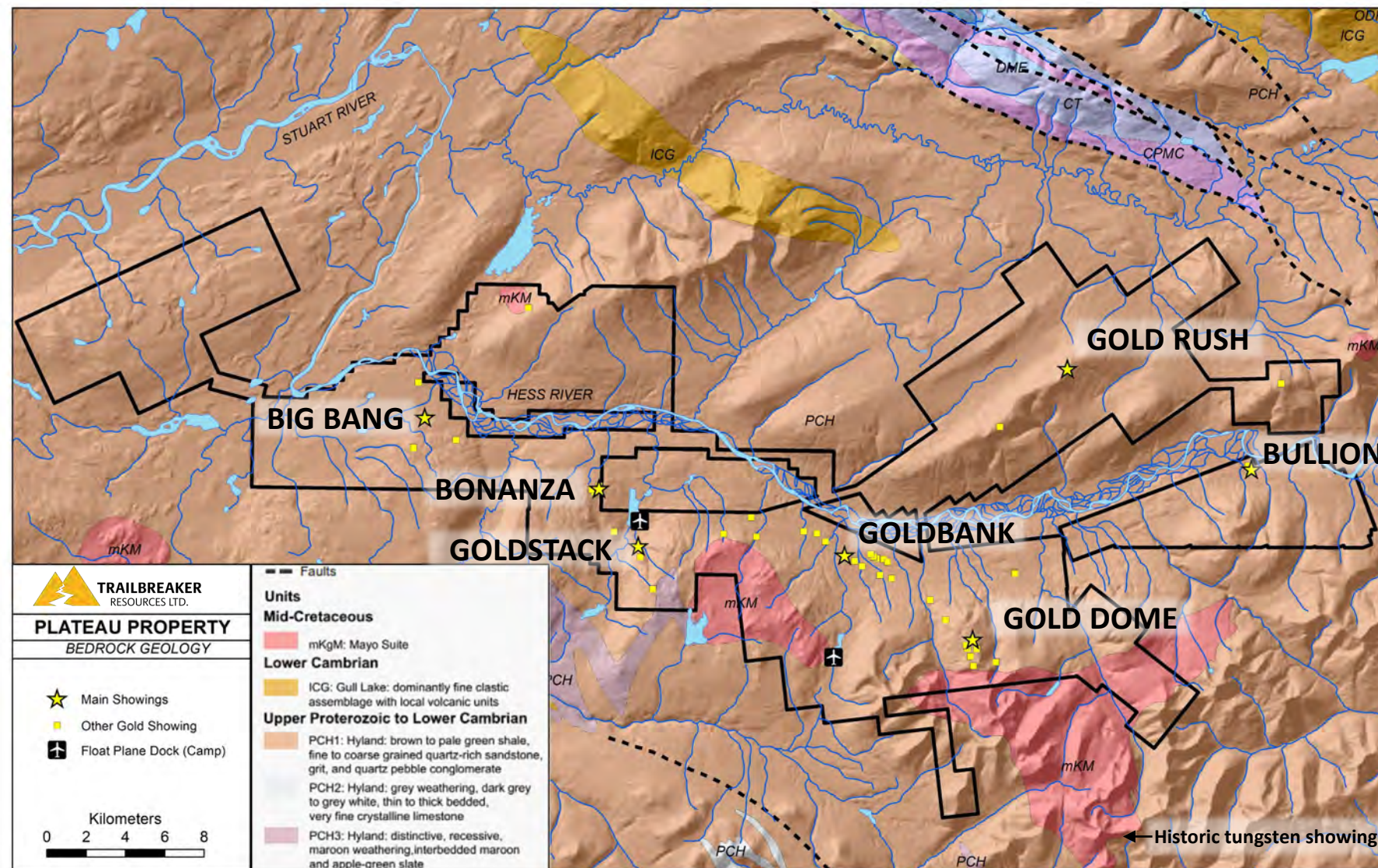
# REGIONAL GEOLOGY

- Located in the Tintina Gold Belt which spans 2000 km across Alaska and the Yukon Territory. Over 50 million ounces of lode gold resources have been defined in the past 20 years.
- This belt includes both orogenic and intrusive-related gold deposits such as Fort Knox, Donlin Creek, Pogo, Brewery Creek, and Dublin Gulch.
- These deposits are typically hosted by both Cretaceous-aged granitic intrusions and the surrounding country rock.
- Gold mineralization at Plateau shares characteristics to both orogenic-type and intrusion-related gold systems.



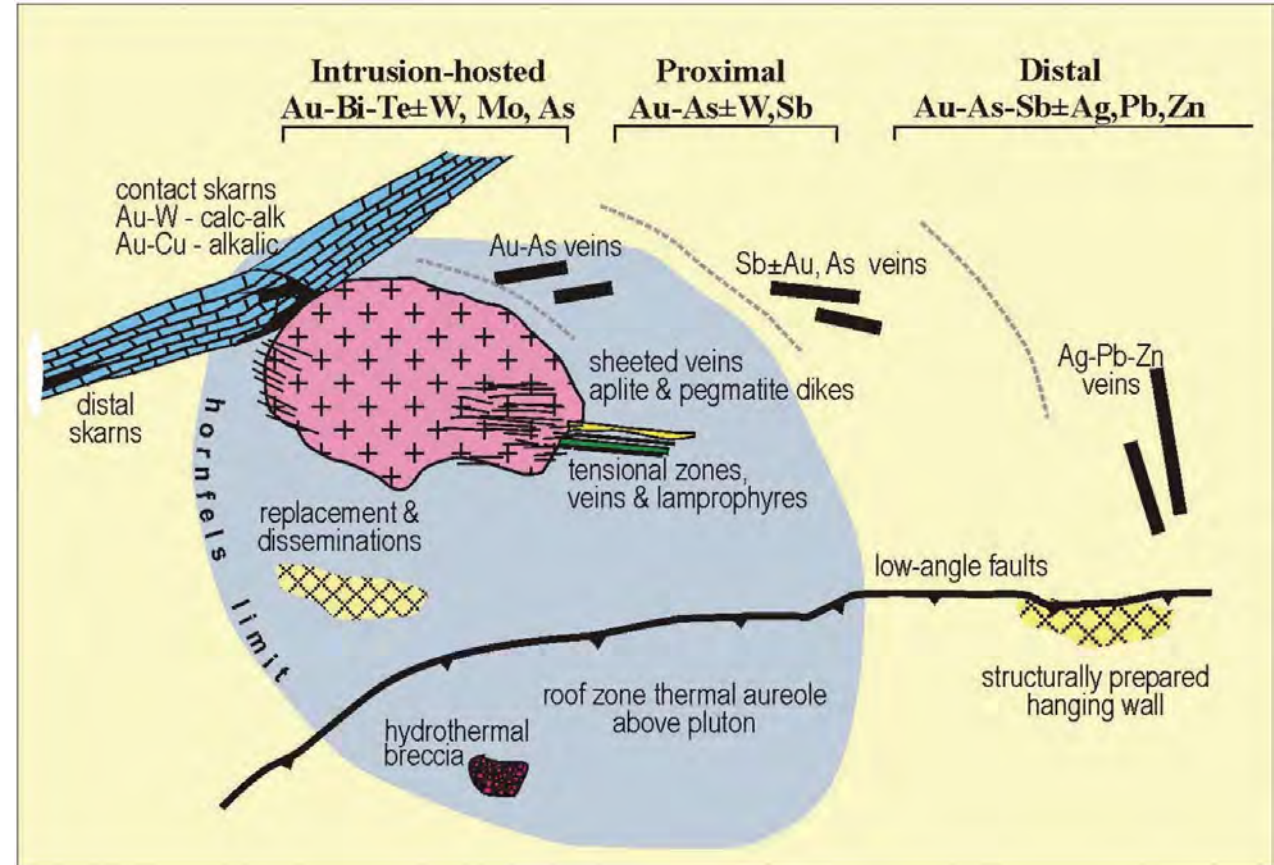


- Plateau's gold mineralization occurs across 50 km of strike within extensive sequences of quartz stockwork and hydrothermal breccias
- Host rocks are Late Proterozoic sedimentary rocks of the Yusezyu Formation (580 Ma) that have been metamorphosed to greenschist facies and deformed by northeast-directed folding and thrust faulting
- Two granitic stocks of mid-Cretaceous age have intruded the Proterozoic rocks along the property's southern boundary
- Gold mineralization is associated with quartz veins developed in a late extensional environment with vein emplacement related to brittle complex fault sets associated with a northwest regional-scale fault system.
- There is a spatial and genetic relationship between the gold mineralization and the mid-Cretaceous Mayo Suite intrusions.





- Gold showings located near the intrusive bodies (Gold Dome & Goldstack) are associated with  $\text{As} \pm \text{Sb}$  while gold showings further outward from the intrusive bodies (Bonanza & Goldbank) are typically associated with  $\text{Pb-Zn} \pm \text{Sb, Te, Bi}$ .
- This spatial and genetic relationship is characteristic of intrusive-related gold systems.
- Further to the model, a historic tungsten skarn showing is present on the southeastern edge of the Mount Armstrong Intrusion.



General plan model of intrusion-related gold systems in the Tintina Gold Province  
(From Hart et al., 2002)

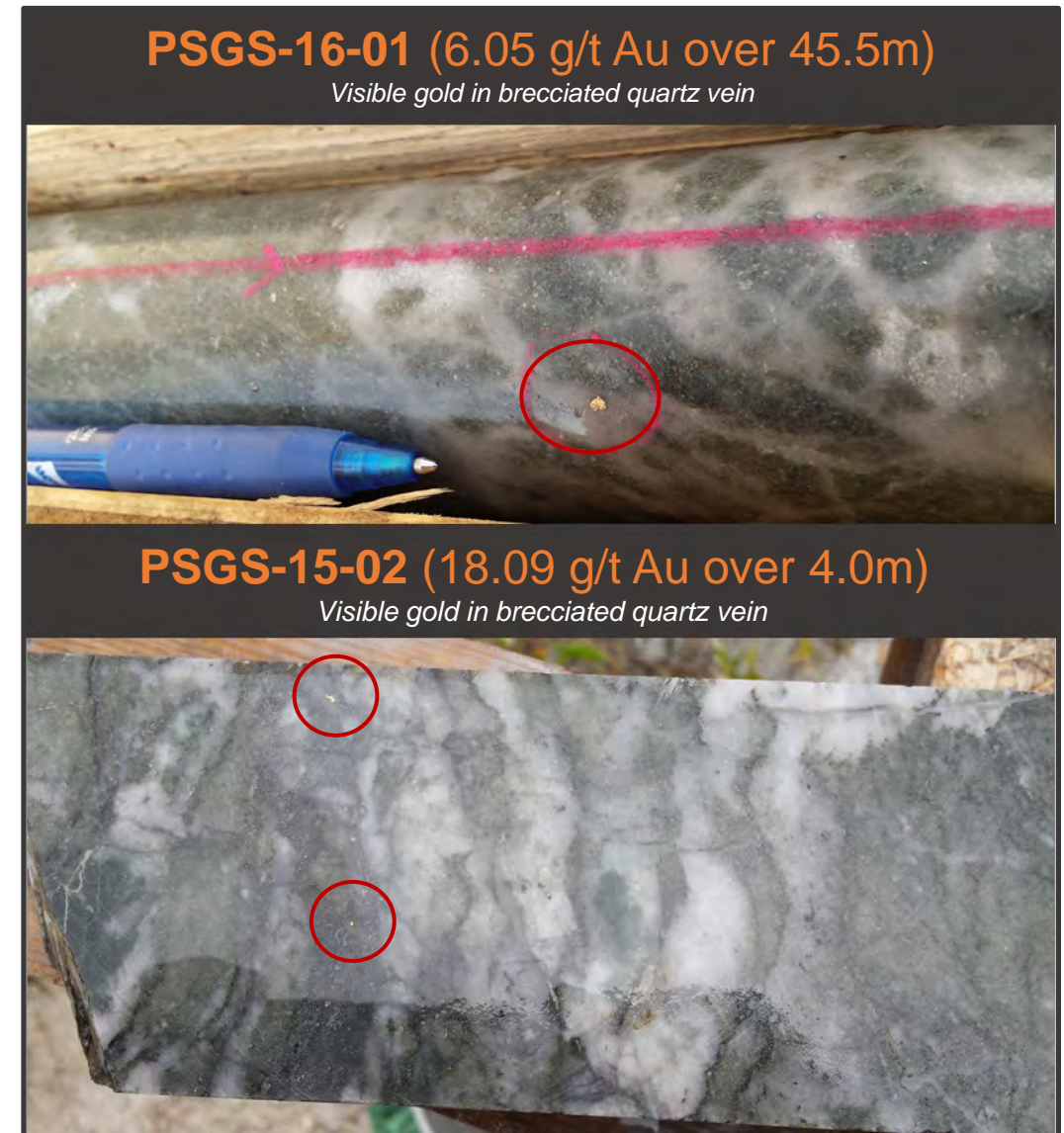




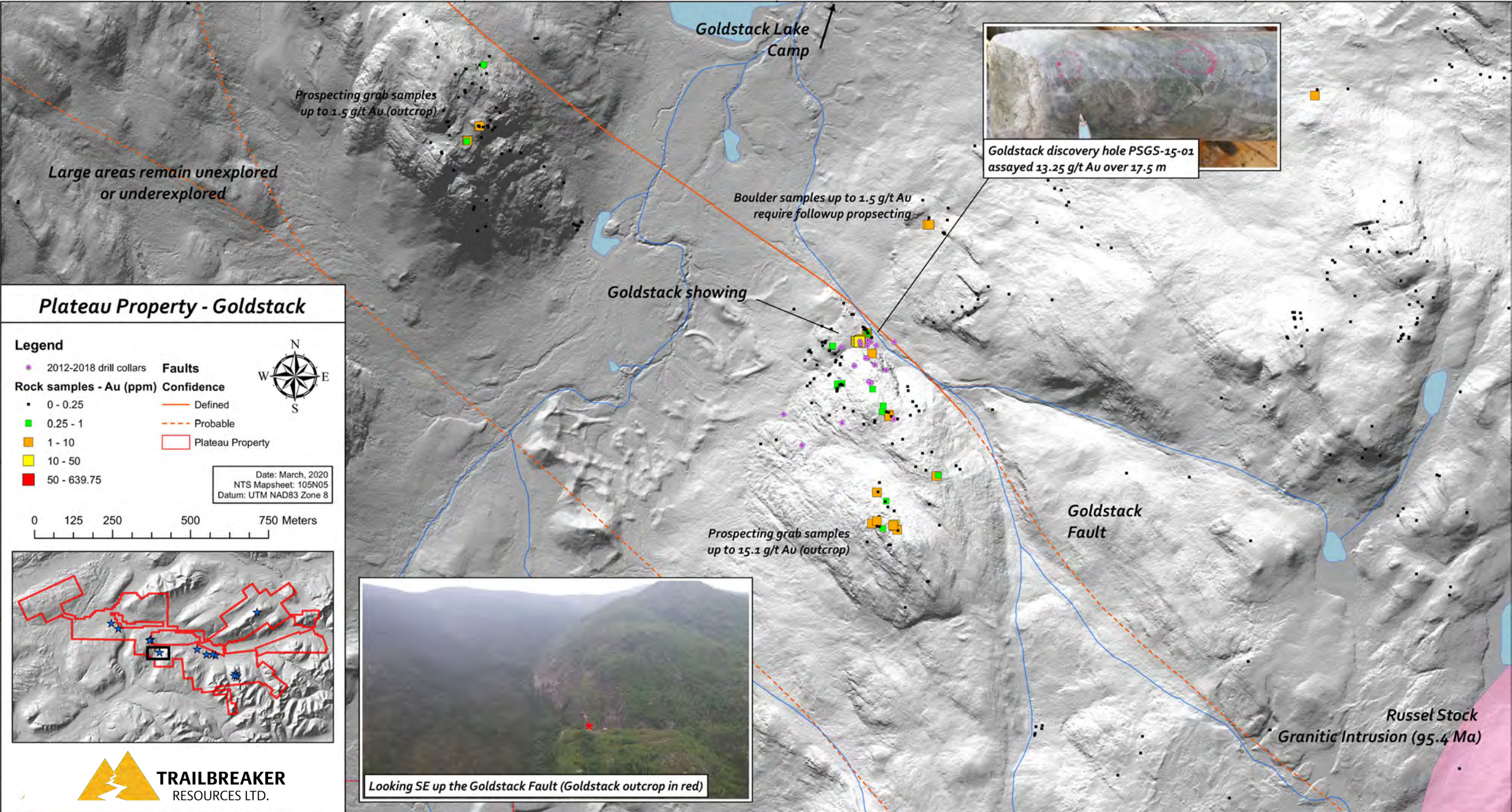
# GOLDSTACK



- Mineralized stockwork and hydrothermal breccia daylights at surface
- Best drill intercepts include:
  - 13.25 g/t Au over 17.5 m (true width) incl.
  - 35.28 g/t Au over 5.7m

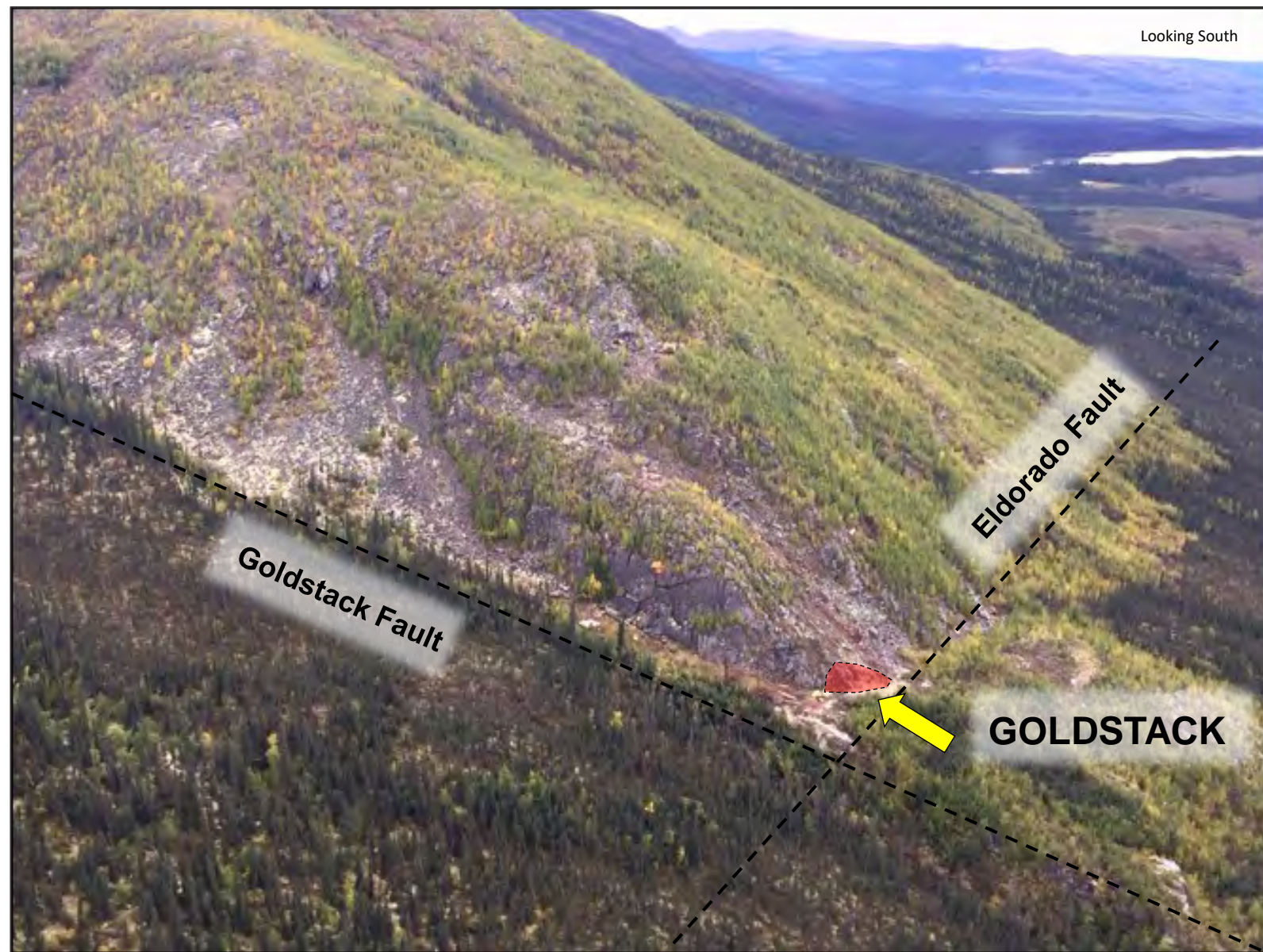








- The Goldstack Zone is interpreted to be a recumbent fold at the intersection of two faults
- Gold mineralization is located within an arsenic-rich hydrothermal breccia and associated fine stockwork surrounding the breccia. This mineralization style is unique this zone.
- The zone daylights at surface (highlighted in red) in a 6m x 3m mineralized outcrop
- Drilling has defined a large, tabular mineralized body that is at least 150m long, between 4.5 – 17.5m thick, and at least 100m wide.
- A hole collared on the outcrop drilling SE down the hinge of the fold assayed 2.51 g/t Au over 66.0m
- The NW-trending Goldstack Fault represents the boundary between two structural domains. It has only been drilled once with the hole ending in the fault displaying anomalous gold mineralization
- A small IP survey conducted over Goldstack revealed the zone is strongly chargeable which presents an excellent exploration tool for the area. No further IP has been done at Goldstack







# GOLD DOME



- Visible gold in felsenmeer over a 500 x 500 meter area.
- 9 square kilometers of anomalous gold in soil samples and rock grabs.
- Best drill intercept up to 7.6 g/t Au over 9.03m near surface.
- Remains open to depth as a lower deep zone was discovered.
  - 12.65 g/t Au over 0.5m at 83.6m vertical depth
- Underexplored hornfels mineralization indicated by a large gold-arsenic soil anomaly situated near the granite intrusive contact (1 km south of main Gold Dome showings).
- Very little exploration completed within the intrusion.

**PSVG-15-06 (12.65 g/t Au over 0.5m)**

*Visible gold intersected at 117 m at depth*



**PSVG-13-06**

*Quartz vein with arsenopyrite and visible gold*



**PSVG-15-08 (3.67 g/t Au over 1.0m)**

*18 meters of quartz stockwork with arsenopyrite and visible gold*





- Gold Dome contains extensive quartz veining and stockwork throughout.
- Strong potential for additional discoveries.
  - Gold mineralized outcrops have been sampled over a 1000 meters of vertical relief and are all hosted in the same sedimentary package.

## QUARTZ BOULDER FIELD

*Massive quartz boulder field at Gold Dome*



## GOLD DOME

*Ariel view looking south*

*Looking South*





**GOLDBANK 2 kilometers,  
1000m lower in elevation**



Gold Dome, looking NW towards Goldbank

Discovered in 2012, Gold Dome is 1.5 km x 1 km gold zone atop a flat-lying plateau. Multiple grab samples with visible gold lead to the discovery drill intercept of 7.6 g/t Au over 9.03m. Gold mineralization is found in quartz stockwork zones hosted by silicified sandstone and grit. Gold is closely associated with arsenopyrite, and to a lesser extent, pyrite and pyrrhotite. The main VG Zone is located 1.5 km north of the mid-Cretaceous Mount Armstrong Intrusion with a large Au-As soil anomaly located within the hornfels zone between.



VG in felsenmere grab samples  
assay up to 317 g/t Au

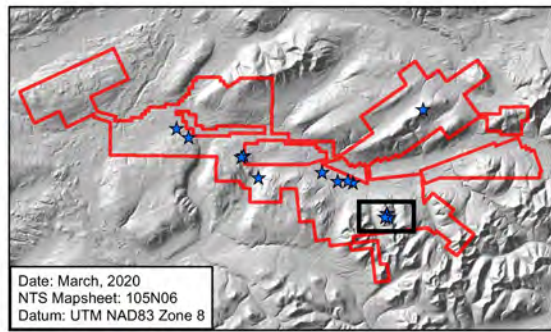
**Plateau Property - Gold Dome**

**Legend**

- |                         |                   |
|-------------------------|-------------------|
| 2012-2018 drill collars | <b>Faults</b>     |
| Rock samples - Au (ppm) | <b>Confidence</b> |
| 0 - 0.25                | Defined           |
| 0.25 - 1                | Probable          |
| 1 - 10                  | Normal            |
| 10 - 50                 | Normal - probable |
| 50 - 639.75             | Thrust            |
| Plateau Property        | Thrust - probable |
| Au-As soil anomaly      |                   |



0 0.25 0.5 1 Kilometers



Date: March, 2020  
NTS Mapsheet: 105N06  
Datum: UTM NAD83 Zone 8



**TRAILBREAKER**  
RESOURCES LTD.

Structurally-mapped area

Extent of 775 sample soil grid

VG in felsenmere grabs  
assay up to 129 g/t Au

900m x 600m hornfels zone  
of strongly anomalous  
Au-As soil sampling

Strong potential for  
hornfels mineralization

Untested Au-As soil anomaly  
(up to 50 ppb Au, 232 ppm As)

**Mount Armstrong Intrusion (95.5 Ma)**  
Limited exploration done



Visible gold in PSVG-13-03  
7.6 g/t Au over 9.03m (4.57 - 13.60m)



PSVG-15-06 discovered multiple deeper gold zones including visible gold at 83.6m vertical depth assaying 12.65 g/t Au over 0.5m.





**GOLDBANK**



- Mineralized vein systems spanning 11 km of strike.
- Coarse arsenopyrite, galena and gold mineralization.
- Grabs grading up to 18.6 oz/t Au.
- Visible gold on surface.
- Limited exploratory drill holes over the trend with poor bedrock outcropping (<30%).
  - Strong potential to discover blind gold mineralization of economic concentrations.

**Visible gold**

51.6 g/t Au



**Visible gold**

51.6 g/t Au



**ARSENOPYRITE MINERALIZATION**

4 g/t Au



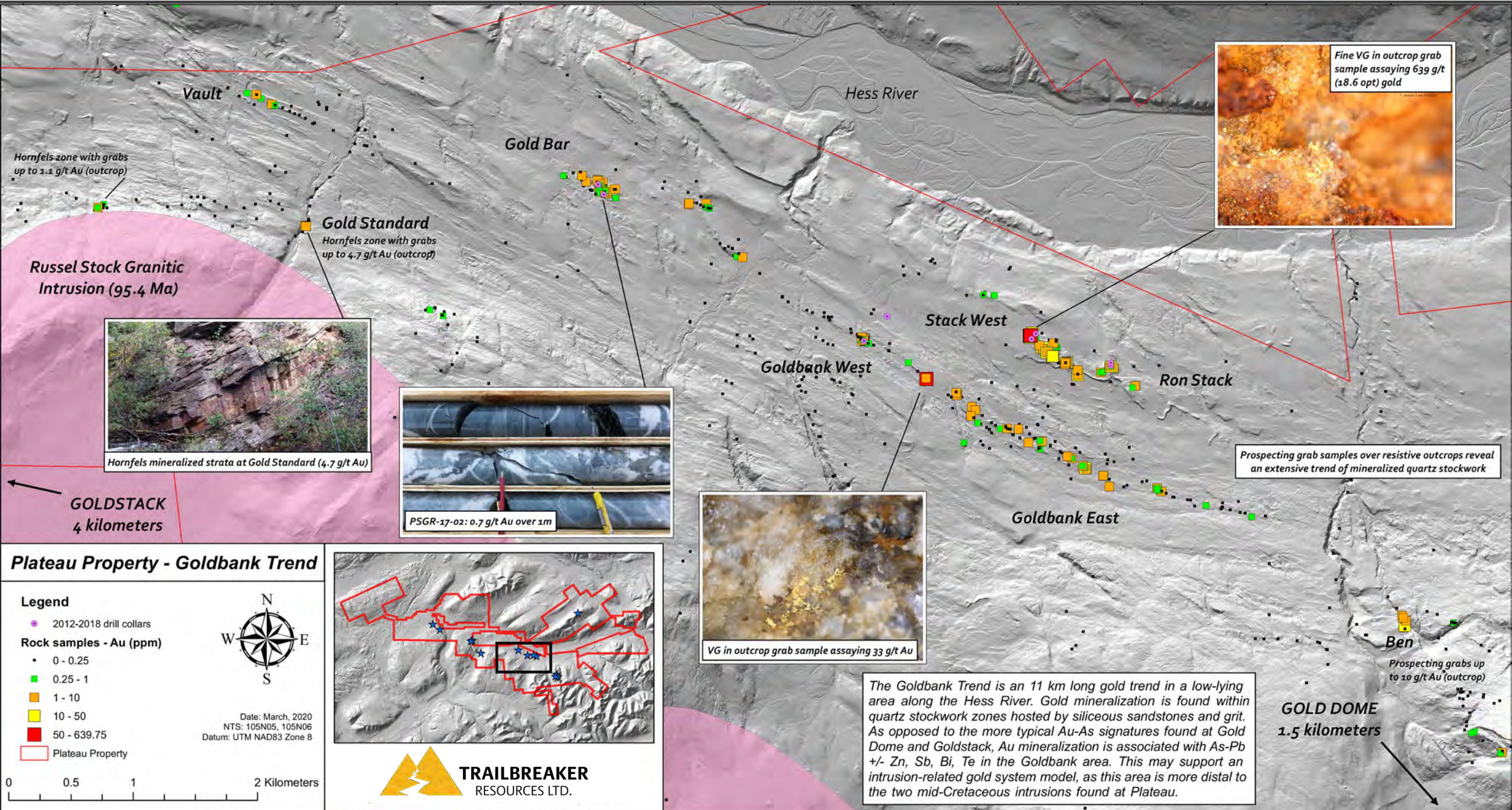


**GOLDBANK TREND**

*11 kilometer trend of high grade gold mineralization in outcrop*









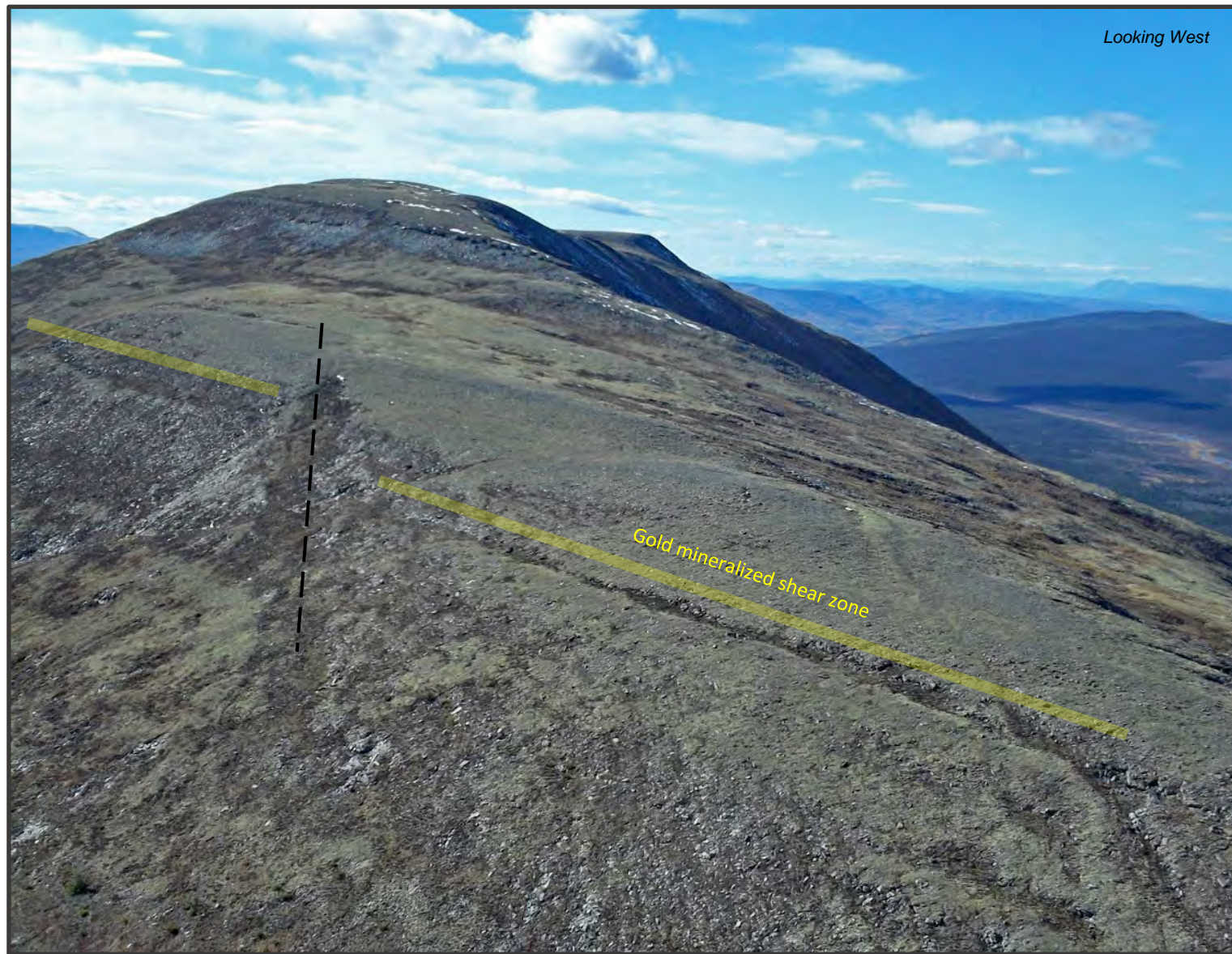


# GOLD RUSH



Located on the north side of the Hess River, the Gold Rush zone is unique to the rest of the Plateau property as it is lower in the Yusezyu stratigraphic sequence and within a different structural domain.

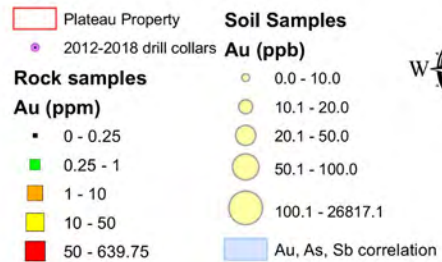
- Soil sampling more effective due to lack of glacial activity.
- Multiple, large Au-As-Sb geochemical trends with values up to 26 g/t Au (in soil) that remain open to the northwest.
  - Gold-in-soil trends along a mapped shear zone that cuts across the hillside.
- Grab samples up to 9 g/t Au.
- Multiple untested soil anomalies.



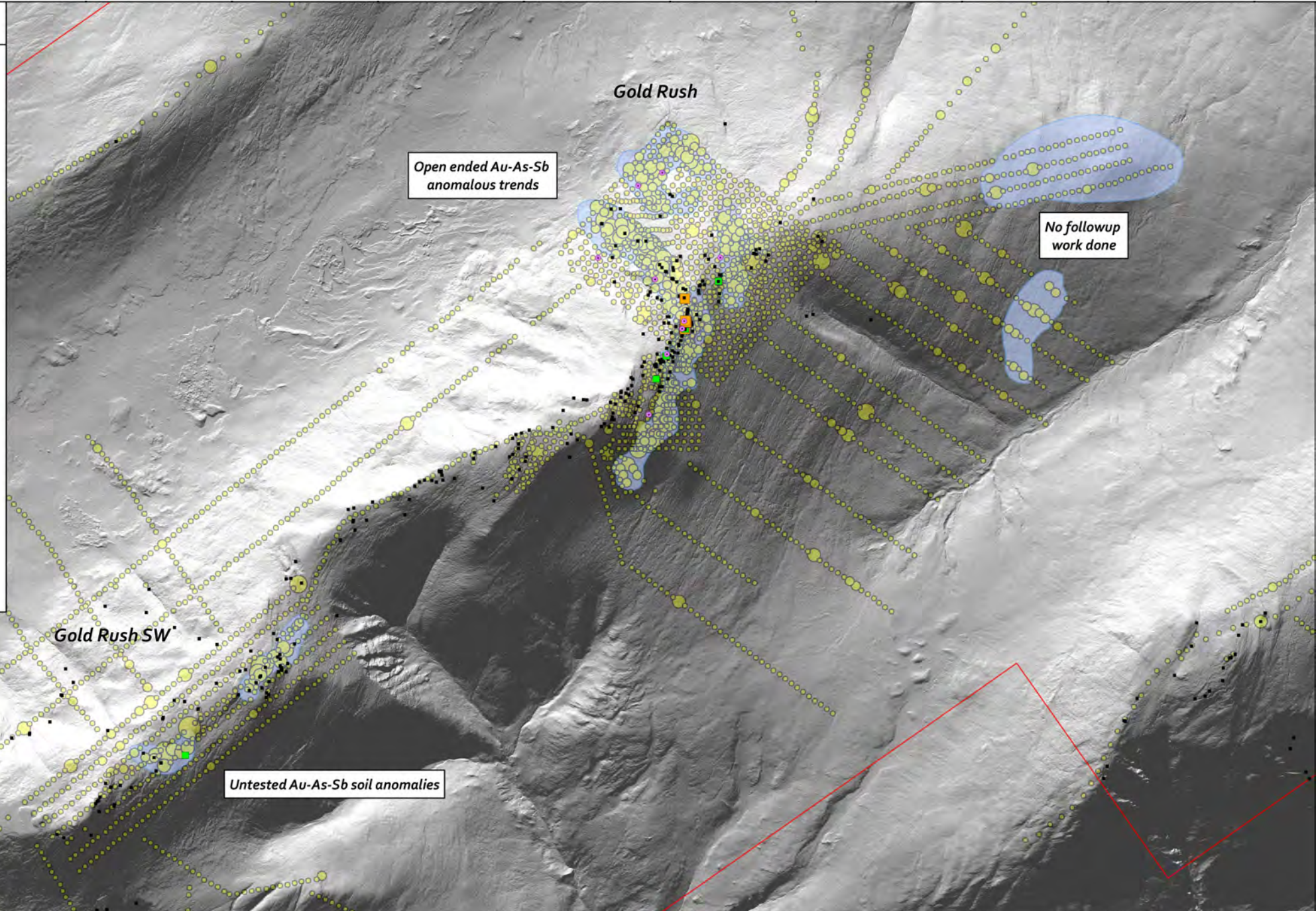
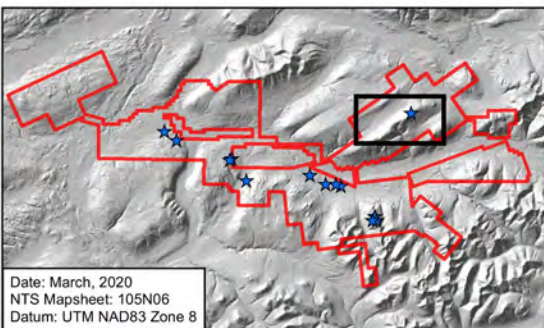


# Plateau Property - Gold Rush

## Legend



0 0.5 1 2 Kilometers







**BONANZA**



- Coarse visible gold in bedrock.
- Grab samples up to 640 g/t Au.
- Channel samples up to 15.06 g/t Au over 1.13m.
- New stockwork zones found at depth in exploratory drilling (0.56 g/t Au over 2m at 87m downhole depth).
- Multiple untested soil anomalies and unfollowed up prospecting grab samples.
- Strong potential for additional discoveries as outcrop is limited and masked by glacial overburden.

## BONANZA SHOWING

*Up to 640 g/t Au*



## VG

*Coarse visible gold*



## VG

*Coarse visible gold scratched by glacial ice sheet*







## CHANEL SAMPLES

Up to 15.06 g/t Au over 1.13 m



## BONANZA OUTCROP

Thick glacial overburden surrounds showing





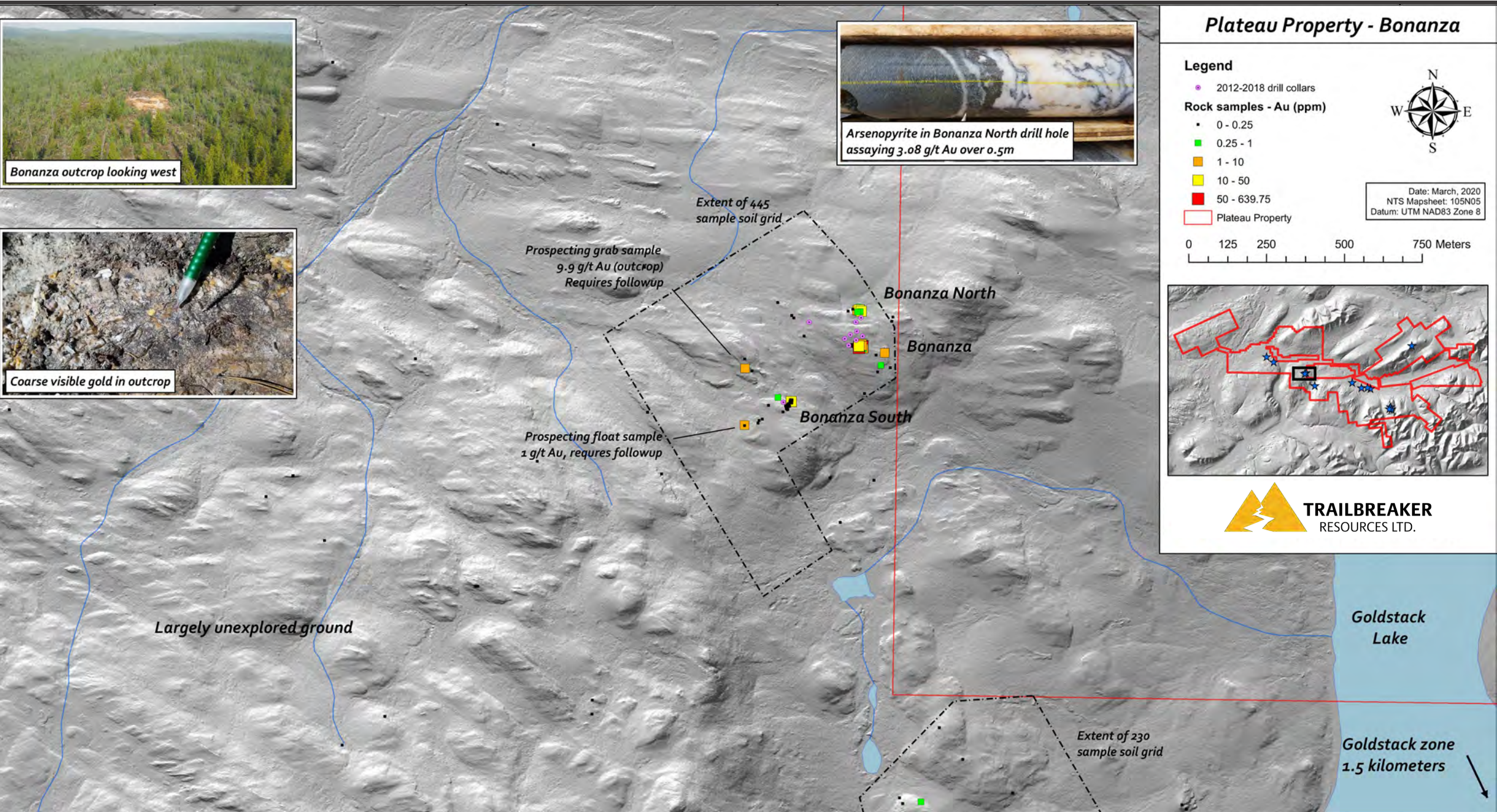
Bonanza outcrop looking west



Coarse visible gold in outcrop



Arsenopyrite in Bonanza North drill hole assaying 3.08 g/t Au over 0.5m



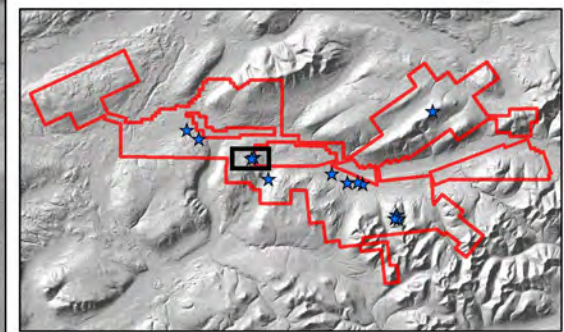
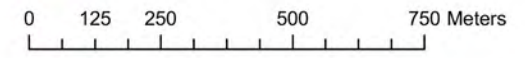
# Plateau Property - Bonanza

## Legend

- 2012-2018 drill collars
- Rock samples - Au (ppm)**
  - 0 - 0.25
  - 0.25 - 1
  - 1 - 10
  - 10 - 50
  - 50 - 639.75
- Plateau Property



Date: March, 2020  
NTS Mapsheet: 105N05  
Datum: UTM NAD83 Zone 8





- Extensive mineralized stockwork and breccia zone over an 8 square kilometer area.
- Grab samples up to 27.3 g/t Au.
- Channel sample results of 2.4 g/t Au over 3.5m.
- 770 sample soil grid with multiple Au-As anomalies requiring follow-up.
- Limited diamond drilling.

## QUARTZ VEINING

*Intense silica flooding and quartz veining in outcrop*



## QUARTZ BRECCIA

*Quartz breccia with arsenopyrite (up to 21 g/t Au)*



## QUARTZ STOCKWORK

*Extensive quartz stockwork along face of outcrop wall*





# Plateau Property - Big Bang

## Legend

2012-2018 drill collars

## Rock samples

Au (ppm)

0 - 0.25

0.25 - 1

1 - 10

10 - 50

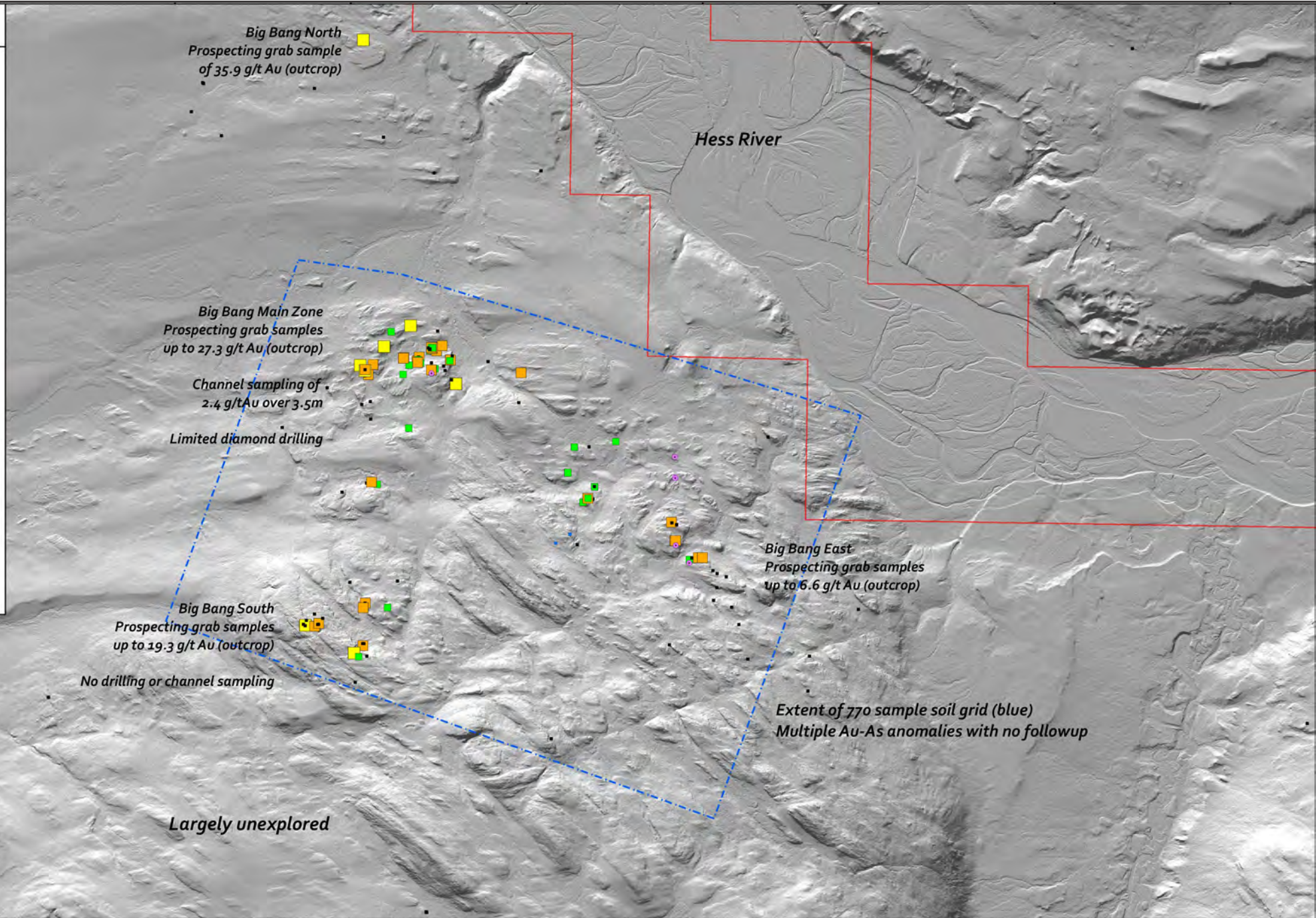
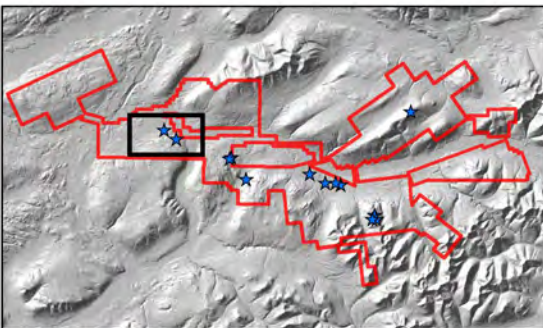
50 - 639.75

Plateau Property



Date: March, 2020  
NTS Mapsheet: 105N05  
Datum: UTM NAD83 Zone 8

0 0.25 0.5 1 1.5 Kilometers

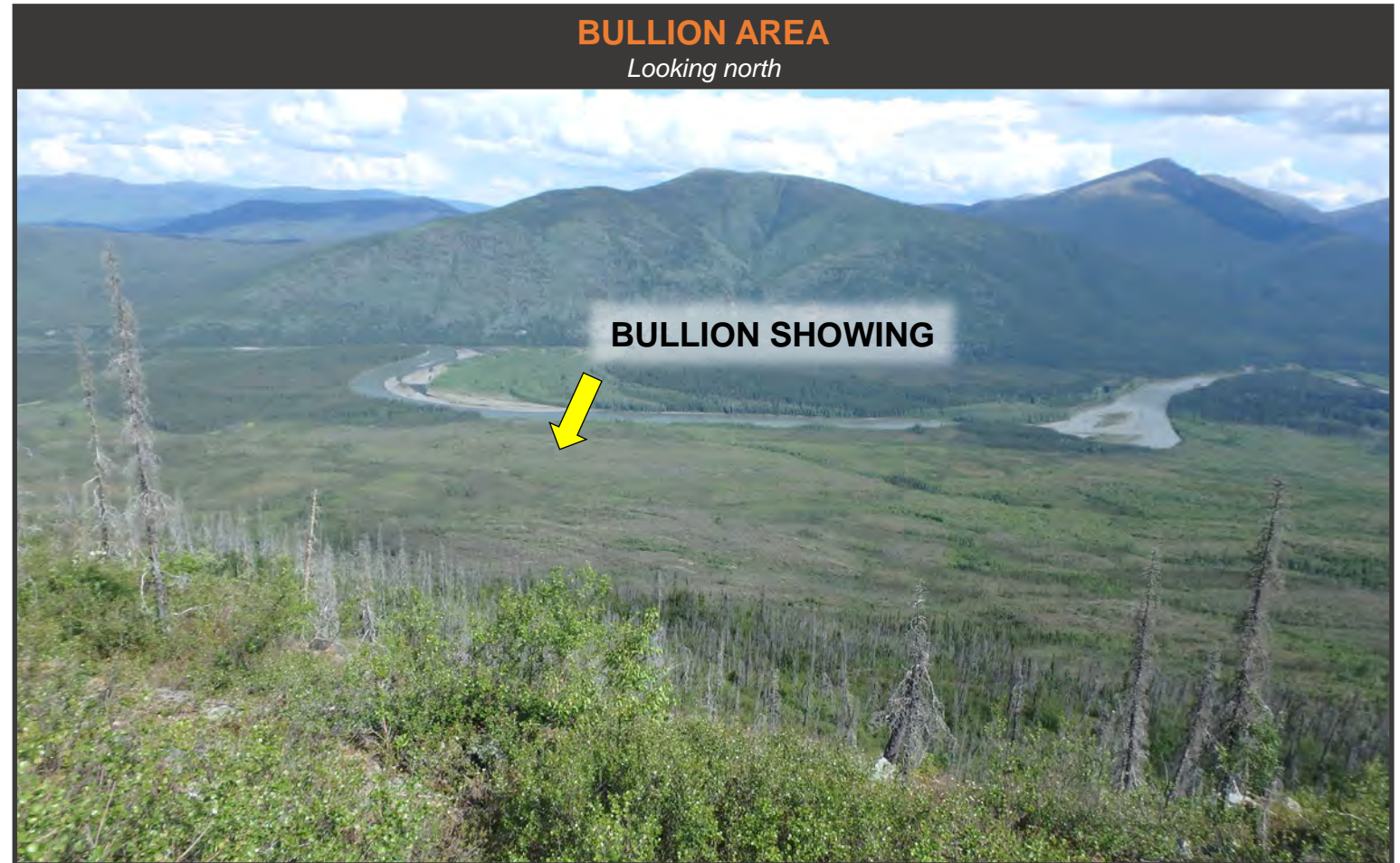




The Bullion zone represents the newest discovery on the property and demonstrates the pervasiveness of Plateau's district-scale gold system.

- Prospecting grab samples up to 11.8 g/t Au.
- 3 x 2 km arsenic anomaly defined by ridge-and-spur soil sampling.
- Limited prospecting done.
- No drilling or channel sampling.

Additional exploration efforts along this newly recognized gold district will continue to return new discoveries over the years to come.

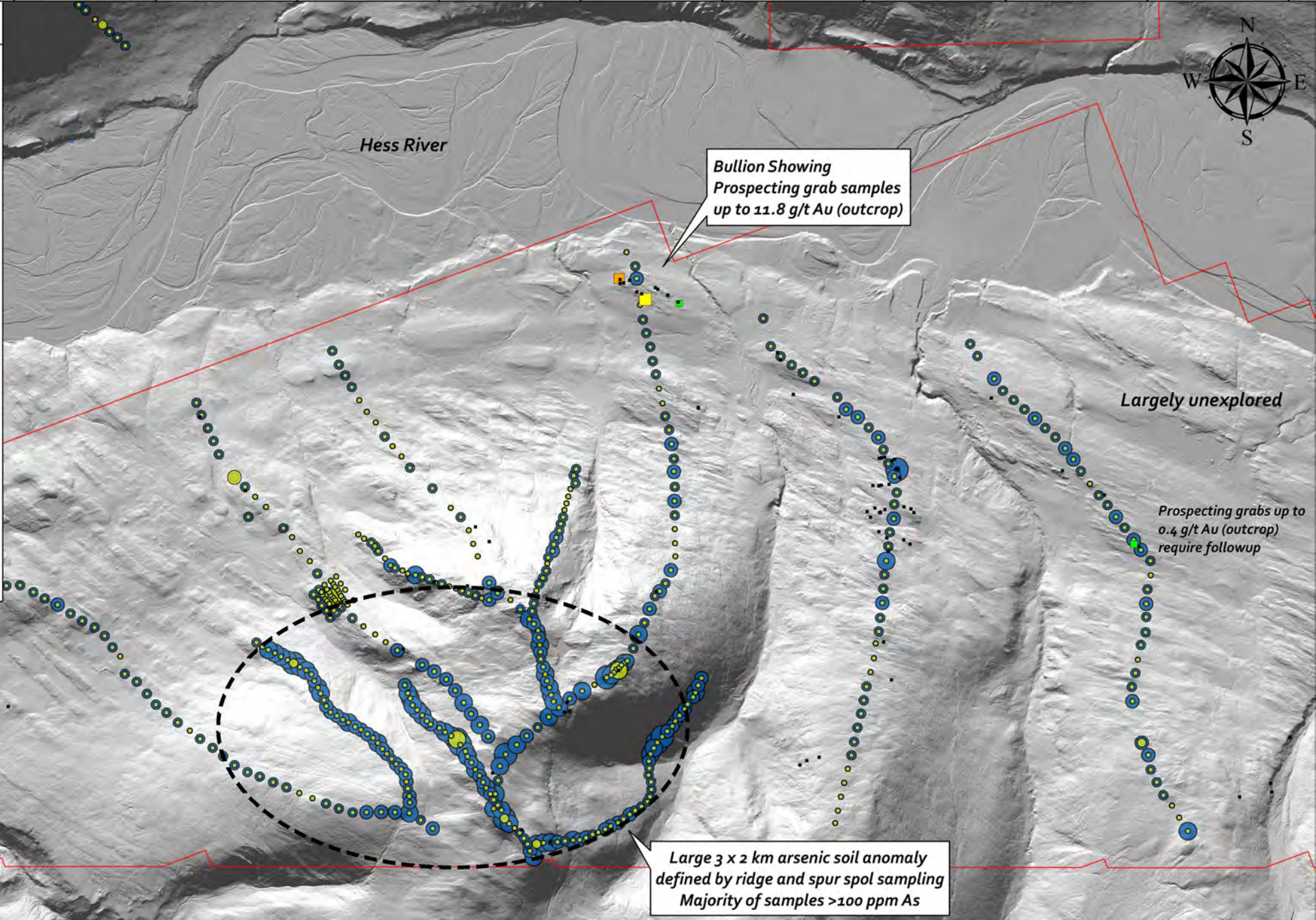
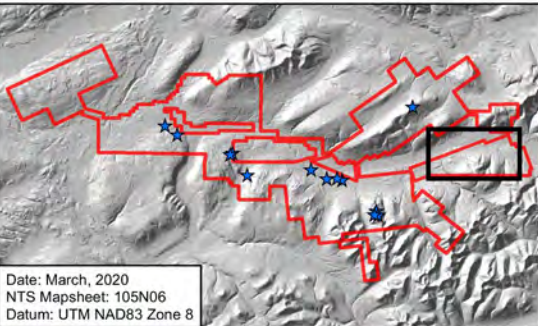




# Plateau Property - Bullion

## Legend

Rock samples Au (ppm)	Soil Samples Au (ppb)	Soil samples As (ppm)
0 - 0.25	0.0 - 10.0	0.0 - 20.0
0.25 - 1	10.1 - 20.0	20.1 - 50.0
1 - 10	20.1 - 50.0	50.1 - 100.0
10 - 50	50.1 - 100.0	100.1 - 500.0
50 - 639.75	100.1 - 26817.1	500.1 - 10000
Plateau Property		





## Head Office

Trailbreaker Resources Ltd.  
650 W Georgia St # 2110  
Vancouver, British Columbia  
Canada V6B 4N9

**Phone:** (604) 681-1820

**Email:** [info@TrailbreakerResources.com](mailto:info@TrailbreakerResources.com)

**Website:** [TrailbreakerResources.com](http://TrailbreakerResources.com)



**TRAILBREAKER**  
RESOURCES LTD.