



GOLDSTRIKE
RESOURCES LTD



SKELLY

A GRASSROOTS GOLD TARGET

OVERVIEW

AN UNDEREXPLORED AREA IN THE RIGHT GEOLOGICAL SETTING



Located in Northwest British Columbia, 100 Km southwest of Whitehorse, Yukon Territory.



Road accessible via the South Klondike Highway (Hwy 2).



Covers the **same geological setting and geochemical signature to that of the Golden Triangle District**, located 300 km to the south, which hosts many world class gold deposit.



Potential for multiple deposit styles like the Golden Triangle District, including **Cu – Au porphyry, epithermal vein, and volcanic massive sulphide (VMS) deposits.**



The 2020 **first pass reconnaissance prospecting program** discovered previously undocumented historic exploration shafts in **quartz – sulphide veins** with **grab samples containing > 1 oz/ton gold and 14 oz/ton silver**



LOCATION

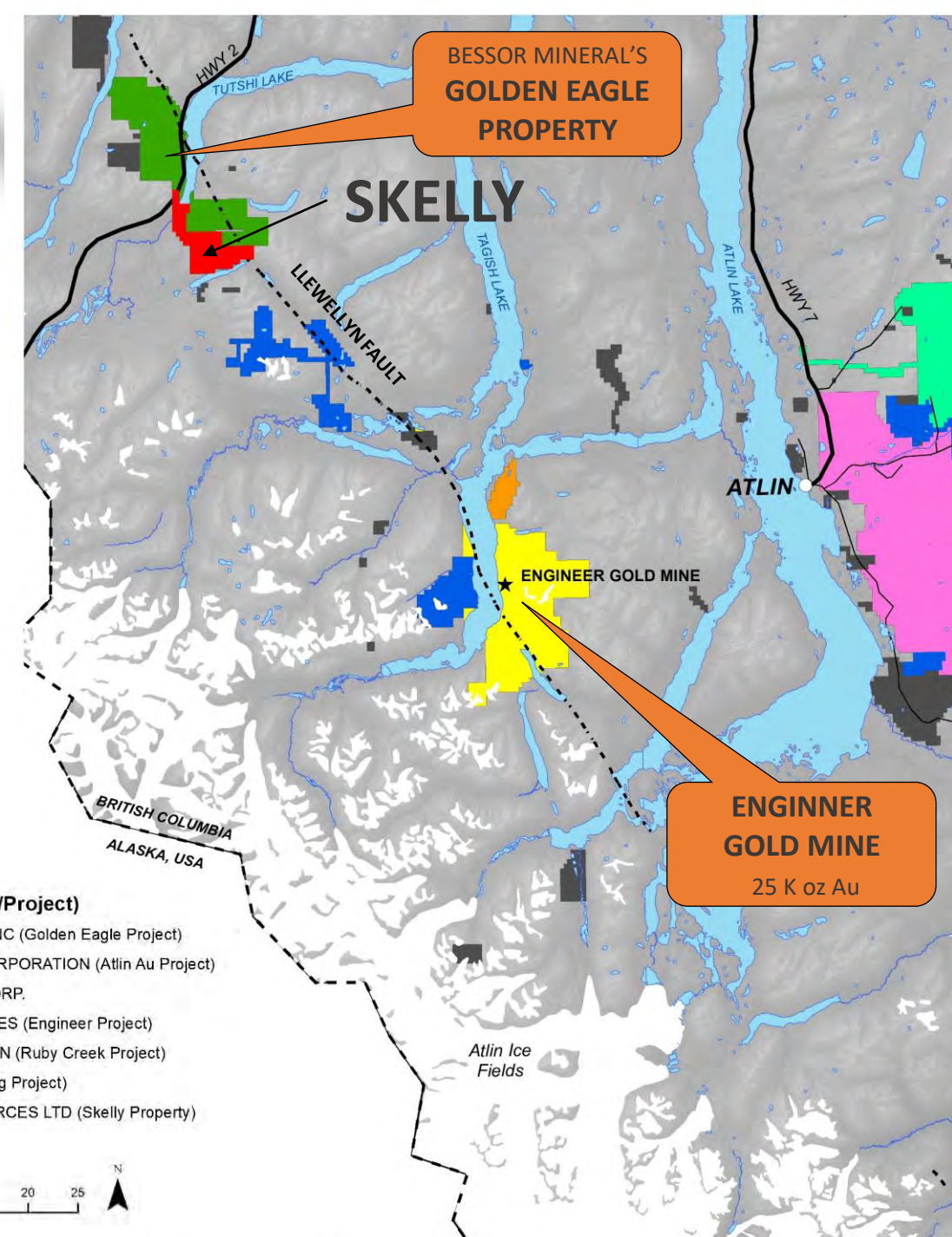
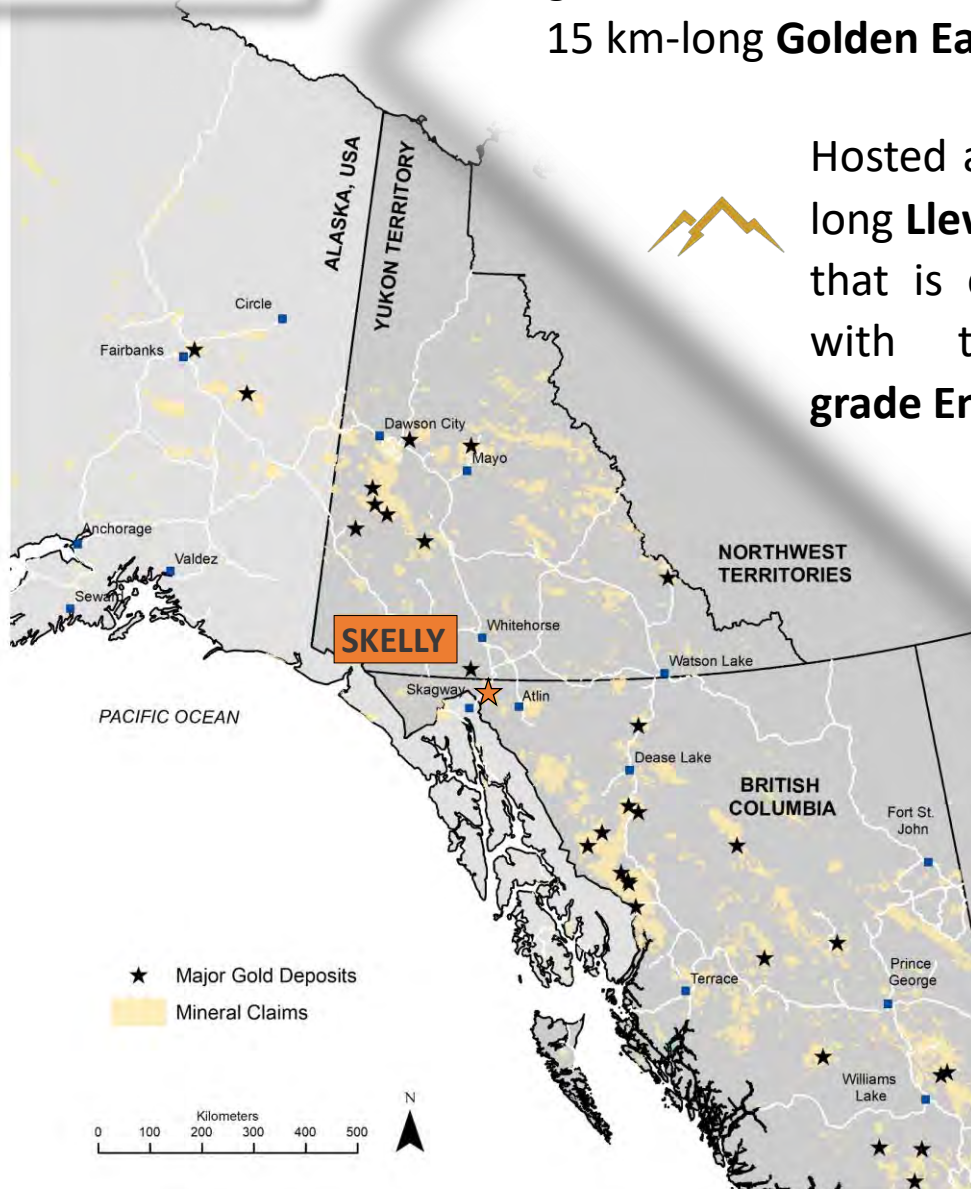
Located just south of the British Columbia - Yukon border, approx. 100 km southwest of Whitehorse Yukon Territory and 60 km northwest of Atlin, British Columbia.

South Klondike highway runs through the northwest portion of the property providing excellent road access from the port city of Skagway, USA and Whitehorse, Yukon Territory, Canada.

CLAIMS

The property covers underexplored ground south of Bessor Mineral's robust 15 km-long **Golden Eagle Property**

Hosted along the 100 km-long **Llewellyn thrust fault** that is closely associated with the historic **high-grade Engineer gold mine**



Mineral Claims (Owner/Project)

- BESSOR MINERALS INC (Golden Eagle Project)
- BRIXTON METALS CORPORATION (Atlin Au Project)
- DECOORS MINING CORP.
- ENGINEER GOLD MINES (Engineer Project)
- STUHINI EXPLORATION (Ruby Creek Project)
- TAKU GOLD CORP (Tag Project)
- GOLDSTRIKE RESOURCES LTD (Skelly Property)

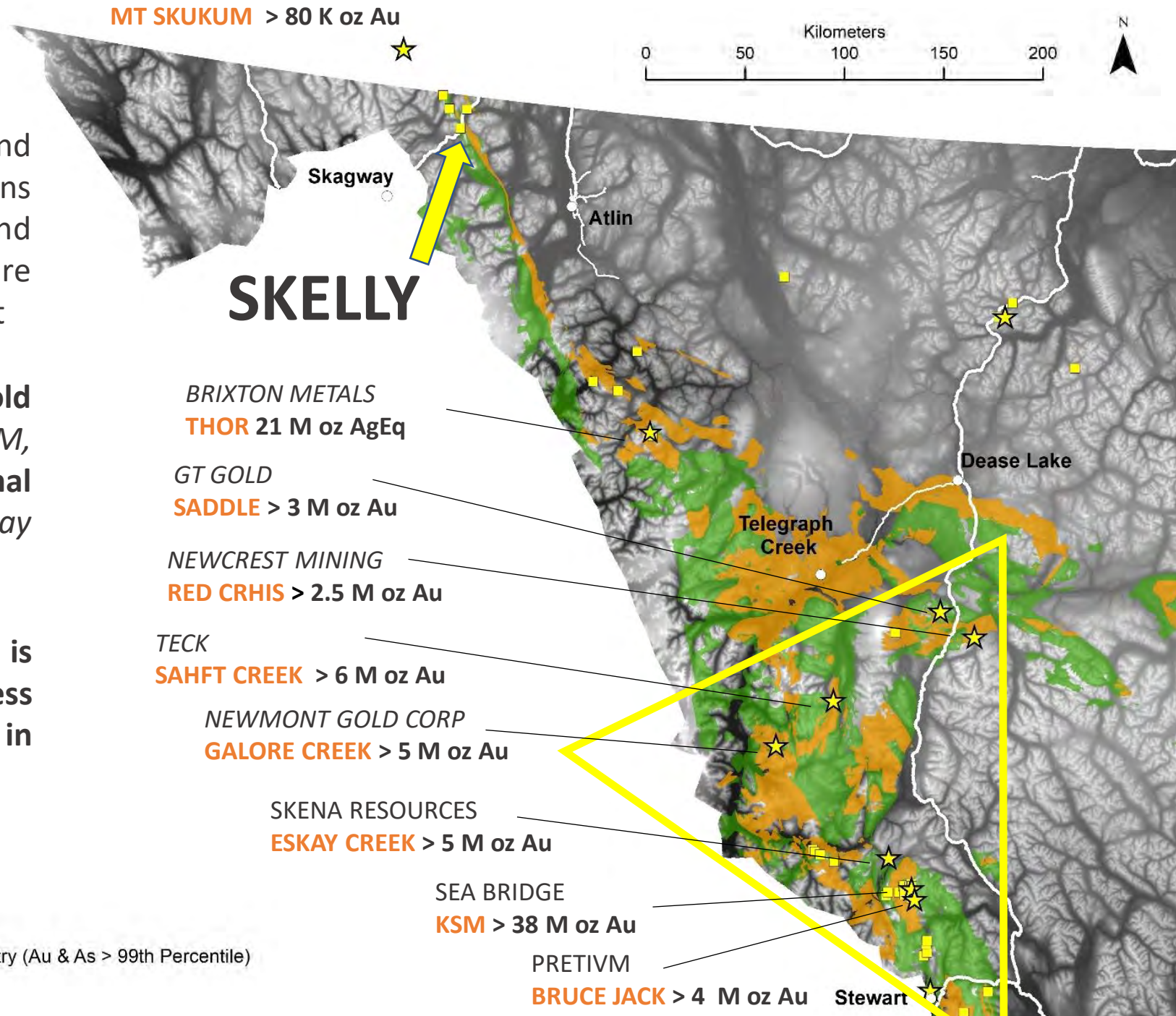
DEPOSIT MODEL

Located within the northern-most end of the Stikine Terrane that contains both the Stuhini volcanic package and a strong Au-As geochemical signature unique to the Golden Triangle District

Potential for a wide variety of gold deposits including **porphyry** (*KSM, RedChris, Galore Creek*), **epithermal vein** (*GT & Bruce Jack*), and **VMS** (*Eskay Creek*).

This portion of the Stikine Terrain is highly prospective yet much less explored than other gold districts in BC.

-  Stikine Terrane
-  Stuhini Volcanic Group
-  Significant Gold Deposit
-  Regional Stream Geochemistry (Au & As > 99th Percentile)



HISTORY

1890's

EARLY PROSPECTORS

Numerous gold-bearing quartz-sulphide veins were discovered by prospectors passing through on their way up to the Klondike Gold Rush via the Chillkoot Trail. These old workings consist mostly of old exploration adits and shafts.

1987

GEOLOGICAL SURVEY OF CANADA

Regional stream sediment sampling outlined anomalous Au, As, and Sb parallel to the 100 km, northwest-trending, regional-scale Lewellyn thrust fault.

2005 – 2020

BESSOR MINERALS

Bessor Minerals consolidates a large claim package in the district; coined the “Golden Eagle” Property. Best drill intercepts to date include 10.73 g/t Au and 104.2 g/t Au over 5.5 m at the Tannis zone.

1912

EARLY 1980's

DUPONT CANADA / NORANDA

First modern day exploration with the completion of large-scale regional exploration programs including prospecting and regional stream geochemistry.

1988 – 2005

JUNIOR MINERS

Noranda Exploration completed the first documented exploratory drilling in the area and intermittent exploration efforts continued over the years with various mining companies.

2020

GOLDSTRIKE RESOURCES

Target Generation led to the staking and first pass reconnaissance exploration program that evaluated the under explored area south of Bessor Mineral's Golden Eagle Property. Prospecting grab samples return values > 1 oz/ton gold and 14 oz/ton silver.

2020

GEOLOGY / MINERALIZATION

REGIONAL SCALE



The Skelly property sits along the eastern margin of a Late Cretaceous pluton within the Coast tectonic belt and the Mesozoic volcanic arc and meta-sedimentary rocks of the Intermontane belt.



A regional-scale, northwest-trending thrust fault (Llewellyn Fault), cuts the east side of the property and is believed to be associated with the numerous mineral occurrences in the area and responsible for the robust regional scale Au-As-Sb geochemical anomaly outlined by the regional stream sediment sampling.

PROPERTY SCALE



Property covers NW-SE trending packages of the Mesozoic Boundary Range metamorphic suite and Labarge group sediments along the eastern margin of a Late Cretaceous granite pluton.



Mineralization includes: gold–silver quartz sulphide veins hosted in both the intrusive and meta-sedimentary rocks, disseminated pyrite hosted in metasedimentary rocks, and lastly disseminated arsenopyrite hosted in intrusive dikes.

DISTRICT SCALE

The Skelly property is contiguous to Bessor Mineral's 8,178 hectare **Golden Eagle property** that contains significant drilled gold showings with the dominant mineralization consisting of high-grade, gold-bearing quartz-sulphide veins.

Skelly covers similar bedrock geology and regional geochemical signatures (Au-As-Sb-Cu) to that of the Golden Eagle property and also straddles the same regional-scale Llewellyn thrust fault.

The newly-staked Skelly claim package covers a large 2, 526 hectare land package south of the Golden Eagle property that remains underexplored due to its more remote setting and rugged terrain.

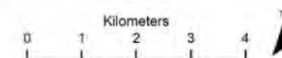
SKARN ZONE
best drill intercept
1.27 g/t Au over 36.45 m (open) &
7.64 g/t Au over 3.5m

TANIS ZONE
best drill intercept
10.73 g/t Au & 104.2 g/t Ag
over 5.5 m

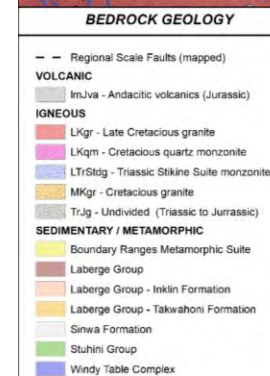
CAMP ZONE
best drill intercept
3.70 g/t Au & 326 g/t Ag over 4.1 m

Regional Stream Geochemistry

- Au >30 & As > 35
- Au >30 & As > 35 & Cu > 100 & Sb > 6
- ▲ Au >115ppb (99th perc)
- ★ Gold showings



- Skelly Property (Goldstrike Resources)
- Golden Eagle Property (Bessor Minerals)
- Other Mineral Claims



SKELLY

Grabs samples up to
35.5 gpt Au & 488 gpt Ag

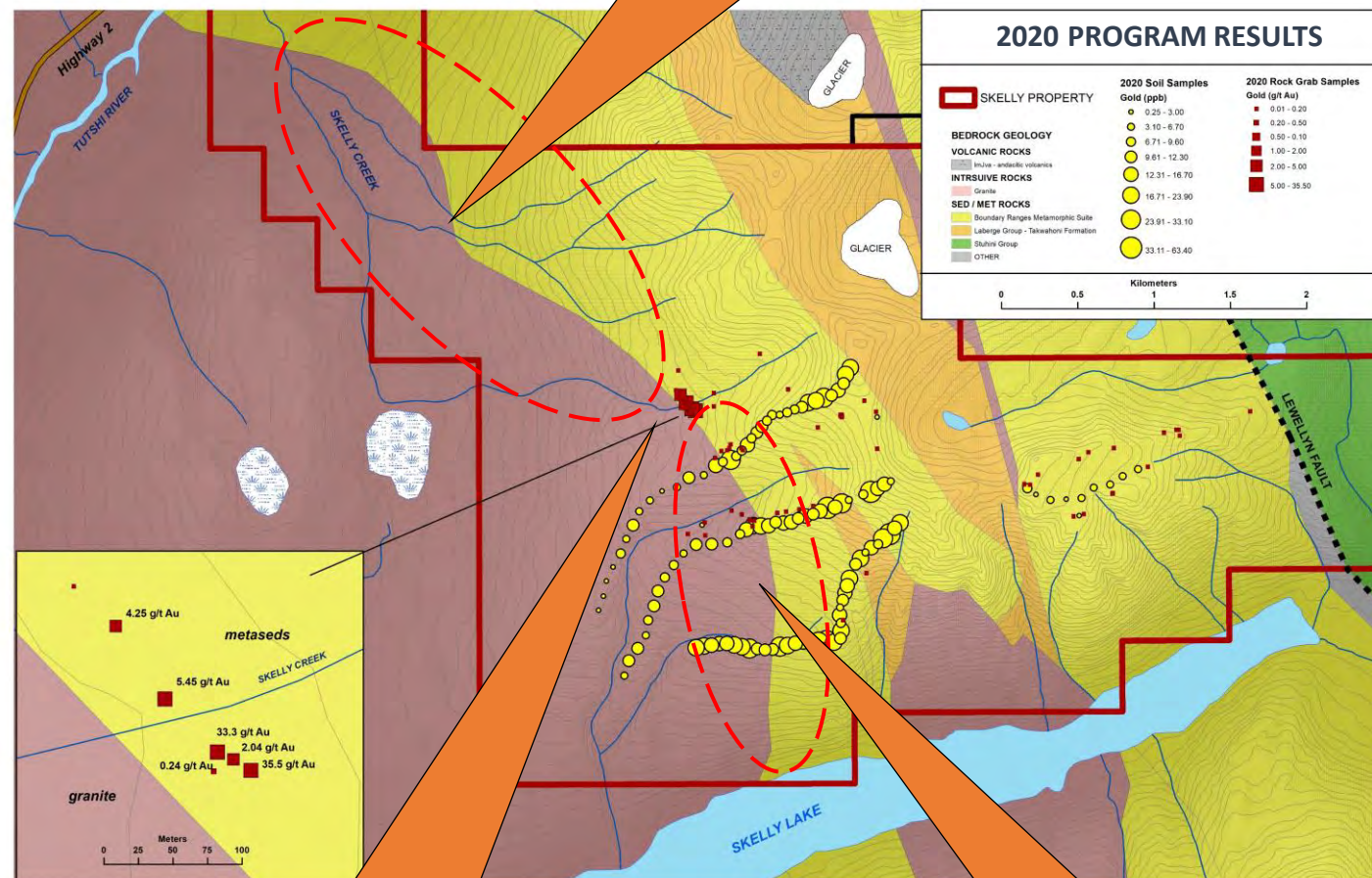
EXPLORATION

A 3 day, first pass reconnaissance exploration program was conducted to evaluate this underexplored area in the summer of 2020.

The program consisted of ridge and spur soil sampling and prospecting with a total of 122 soil samples and 64 rock grab samples collected.

The program led to the discovery of previously undocumented historic exploration shafts containing quartz – sulphide veins with grab samples up to **35.5 g/t Au** and **488 g/t Ag**.

Auriferous quartz veins were sampled over a 100 m northwest trending shear zone that parallel the granite contact and remains open along strike



HIGH PRIORITY TARGET

Future exploration efforts will focus along the northwest-trending granite contact with strong potential of expanding the strike length of the known quartz veins and ideally find new vein systems altogether.

> 100 m trend of Gold-Bearing Veins

Grab samples up to
35.5 g/t Au in quartz veins

HIGH PRIORITY TARGET

Future exploration efforts will follow up on arsenopyrite sampled in granite dikes and elevated gold values in soil samples

OLD SHAFTS – QUARTZ SULPHIDE VEINS

Grabs up to 35.5 g/t Au & 488 g/t Ag

QUARTZ SULPHIDE VEINS

Grabs up to 0.28 g/t



ARSENOPYRITE IN GRANITE DIKES

0.1g/t Au

33.3 g/t gold & 488 g/t silver

Historic Shaft



LOOKING SE

Highway 2

4.25 g/t Au

5.45 g/t Au

33.3 g/t Au

2.04 g/t Au



35.5 g/t gold & 275 g/t Silver



> 100 m trend of gold bearing quartz veining – remains open

Head Office

**Goldstrike Resources Ltd.
Suite 1010-1130 West Pender St.
Vancouver, British Columbia
Canada V6E 4A4**

Phone: (604) 681-1820

Email: info@goldstrikeresources.com

Website: goldstrikeresources.com

