



TRAILBREAKER
RESOURCES LTD.



WILLIE JACK
A GRASSROOTS GOLD TARGET

OVERVIEW

*A HIGH GRADE GOLD DISCOVERY IN
BRITISH COLUMBIA'S LAST FRONTIER*



Property covers 9,878 hectares and is **100% owned** by Trailbreaker Resources.



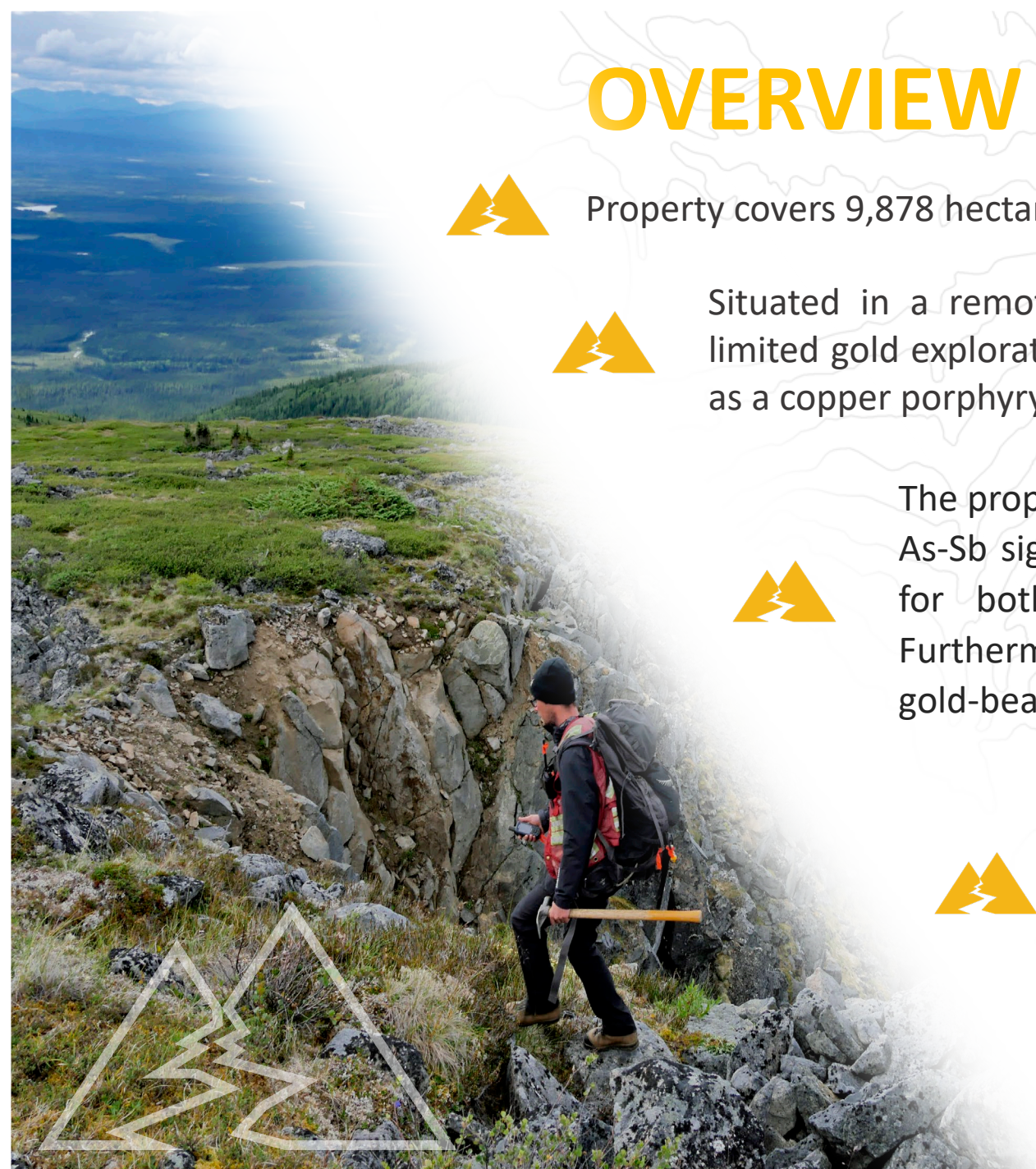
Situated in a remote part of northwestern British Columbia that has seen limited gold exploration to date. It was only briefly looked at in the early 1970s as a copper porphyry target **but samples were not assayed for gold.**

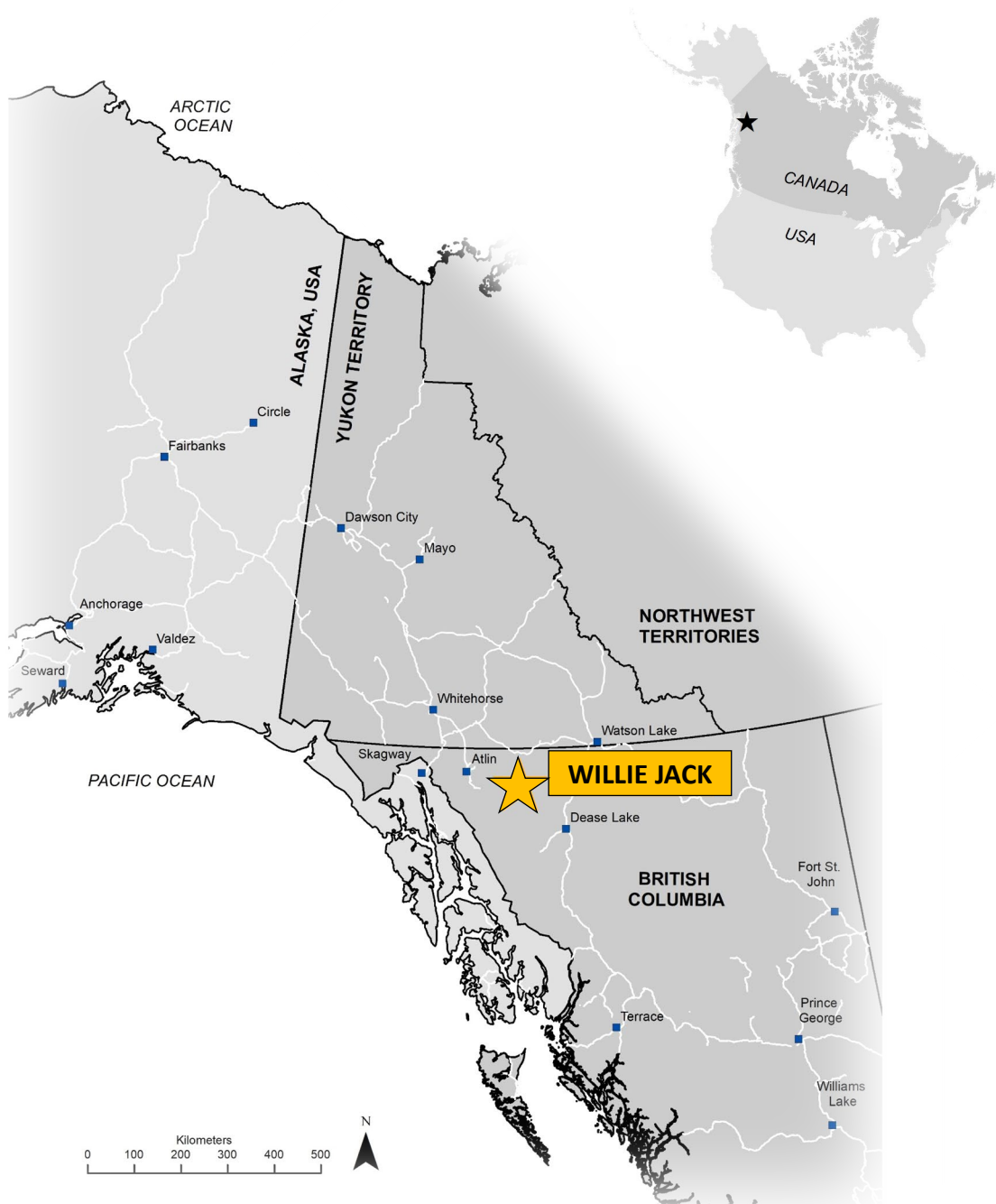


The property covers a strongly anomalous regional geochemical Au-As-Sb signature hosted in a geological setting that shows potential for both porphyry and intrusion-related gold mineralization. Furthermore, the property is at the headwaters of historic placer gold-bearing creeks.



The 2020 first pass reconnaissance prospecting program **discovered widespread gold and silver mineralization over 6 kilometres** with rock grab samples assaying up to **164 g/t (4.78 oz/ton) gold and 257 g/t (7.50 oz/ton) silver.** Soil samples returned gold values up to 0.8 g/t Au.





LOCATION



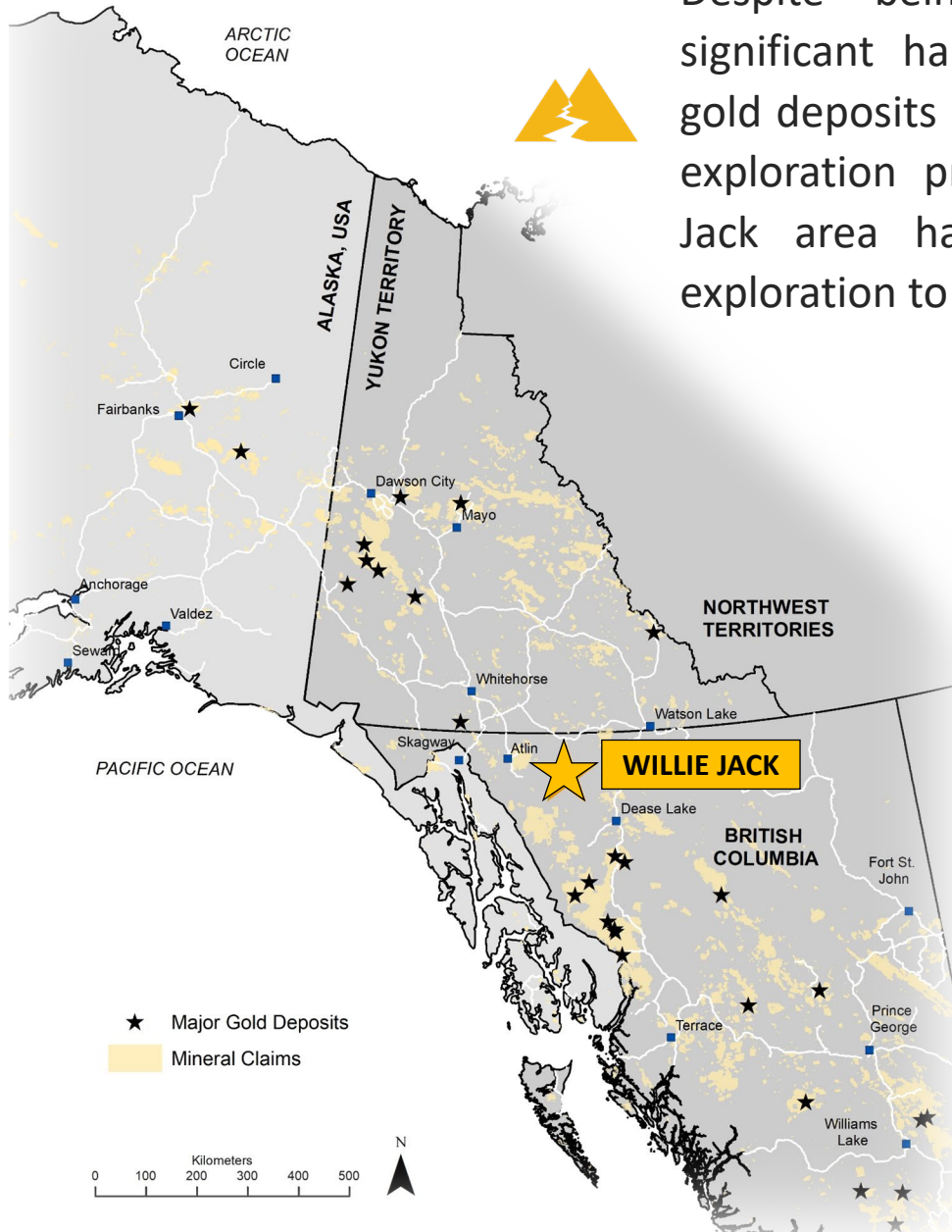
Located in the Atsutla mountain range in northwest British Columbia; 70 km south of the Yukon-BC Border and 120 km northwest of the community of Dease Lake.



Willie Jack sits 65 km due south of the Alaska Highway.



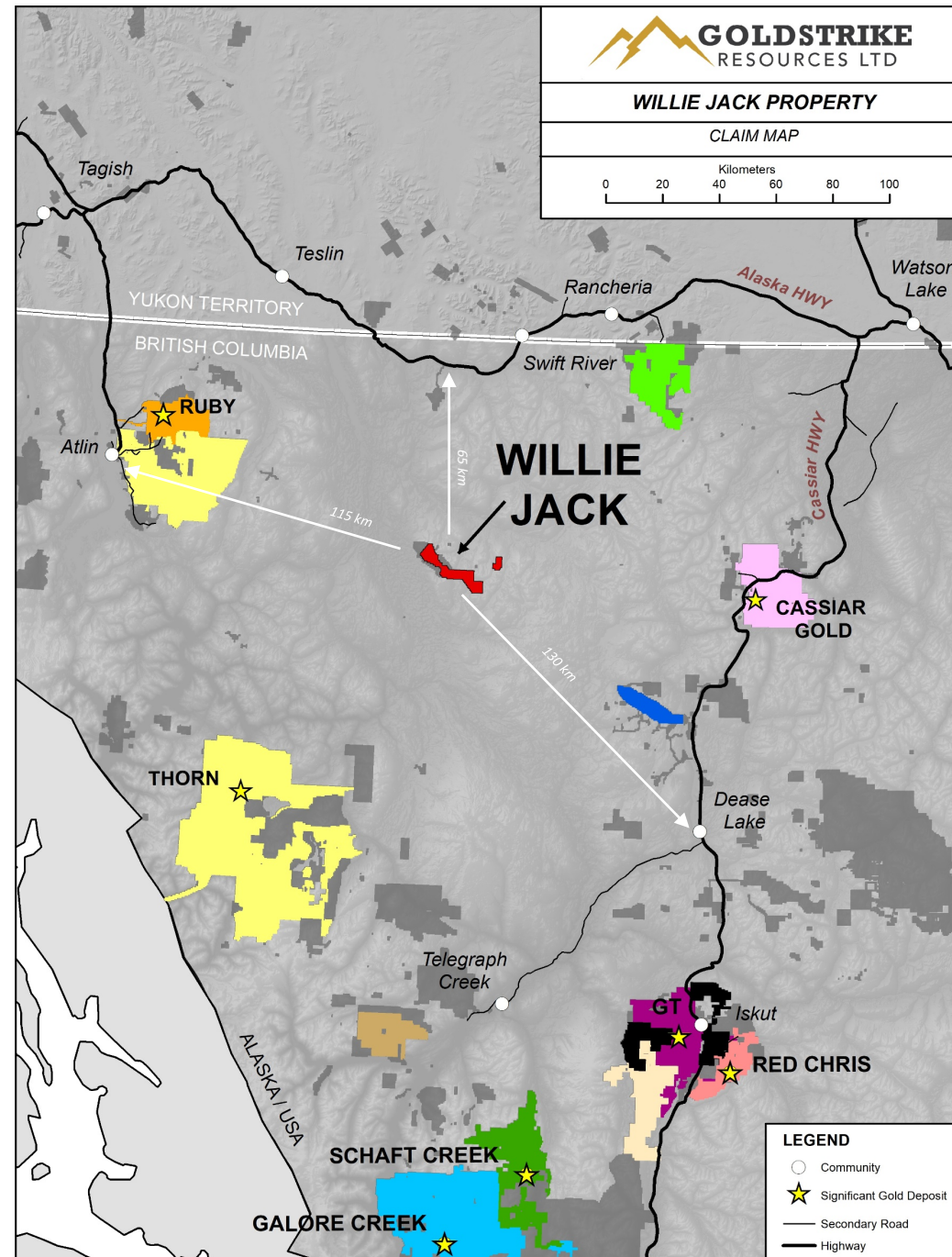
The Willie Jack property is located in British Columbia's **last frontier with very little gold exploration to date.**



Despite being surrounded by significant hard rock and placer gold deposits as well as numerous exploration prospects, the Willie Jack area has seen very little exploration to date

CLAIM OWNERS

| | |
|--|----------------------|
| | COLORADO RESOURCES |
| | GALORE CREEK MINING |
| | GT GOLD CORP |
| | LIBERO COPPER |
| | NEWCREST |
| | SKEENA RESOURCES |
| | TECK RESOURCES |
| | BRIXTON METALS |
| | MARGAUX RESOURCES |
| | COEUR MINING |
| | STUHINI EXPLORATION |
| | KING FISHER METALS |
| | GOLDSTRIKE RESOURCES |
| | OTHER |



GOLDSTRIKE
RESOURCES LTD

WILLIE JACK PROPERTY

CLAIM MAP

0 20 40 60 80 100
Kilometers

LEGEND

- Community
- Significant Gold Deposit
- Secondary Road
- Highway

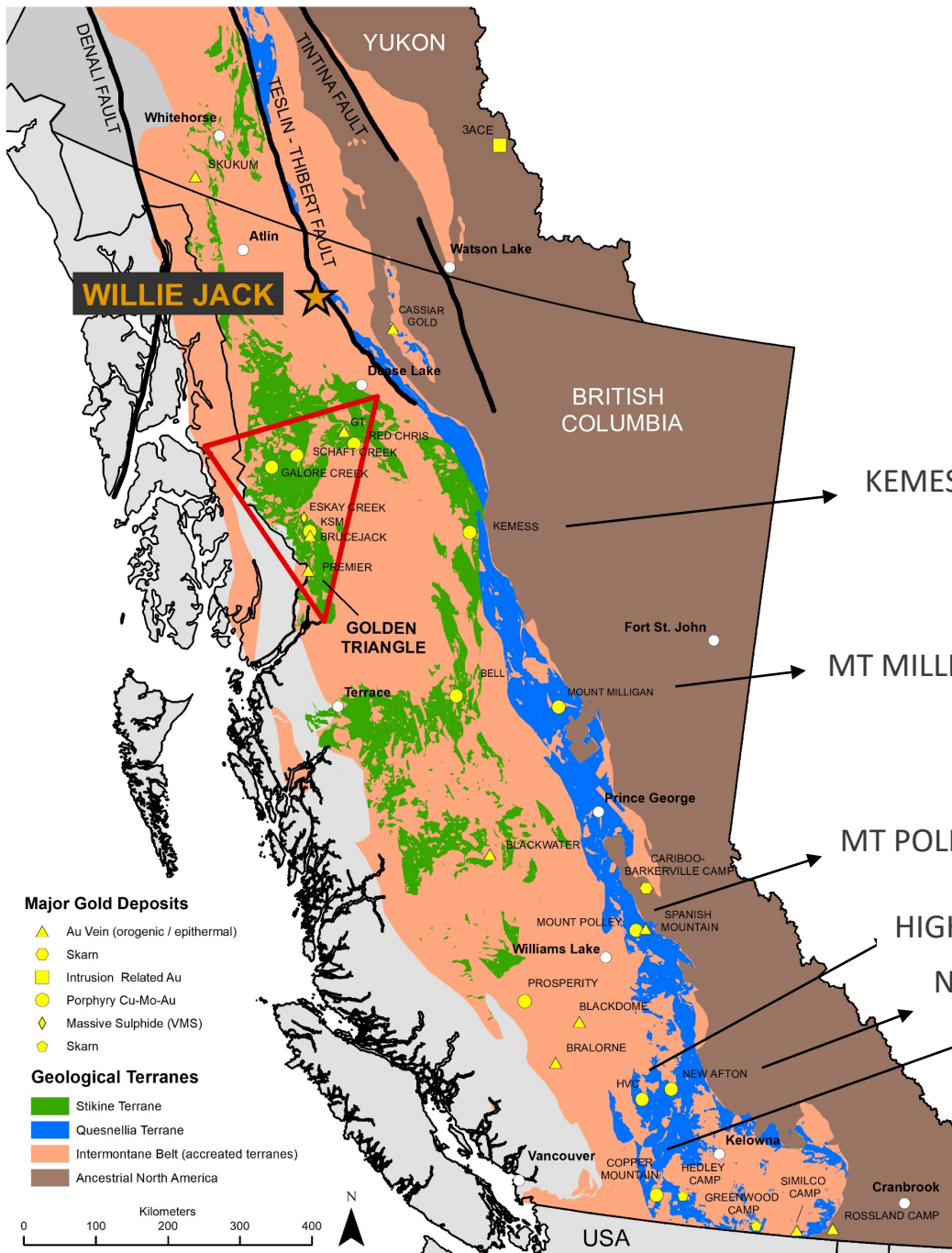
DEPOSIT MODEL

Cu-Au Porphyry

Willie Jack is situated at the northernmost end of the **Quesnellia Terrane** that hosts numerous world class Cu-Au porphyry deposits along the length of British Columbia.

Widespread **Au-Ag-Cu mineralization** hosted in a **propylitic-altered granite** indicates potential for a deeper buried porphyry ore zone at the Willie Jack property.

A strong, regional scale magnetic high overprints the granite pluton suggesting a magnetite-rich, potassic-altered core with a potential porphyry Cu-Au ore body.



DEPOSIT MODEL

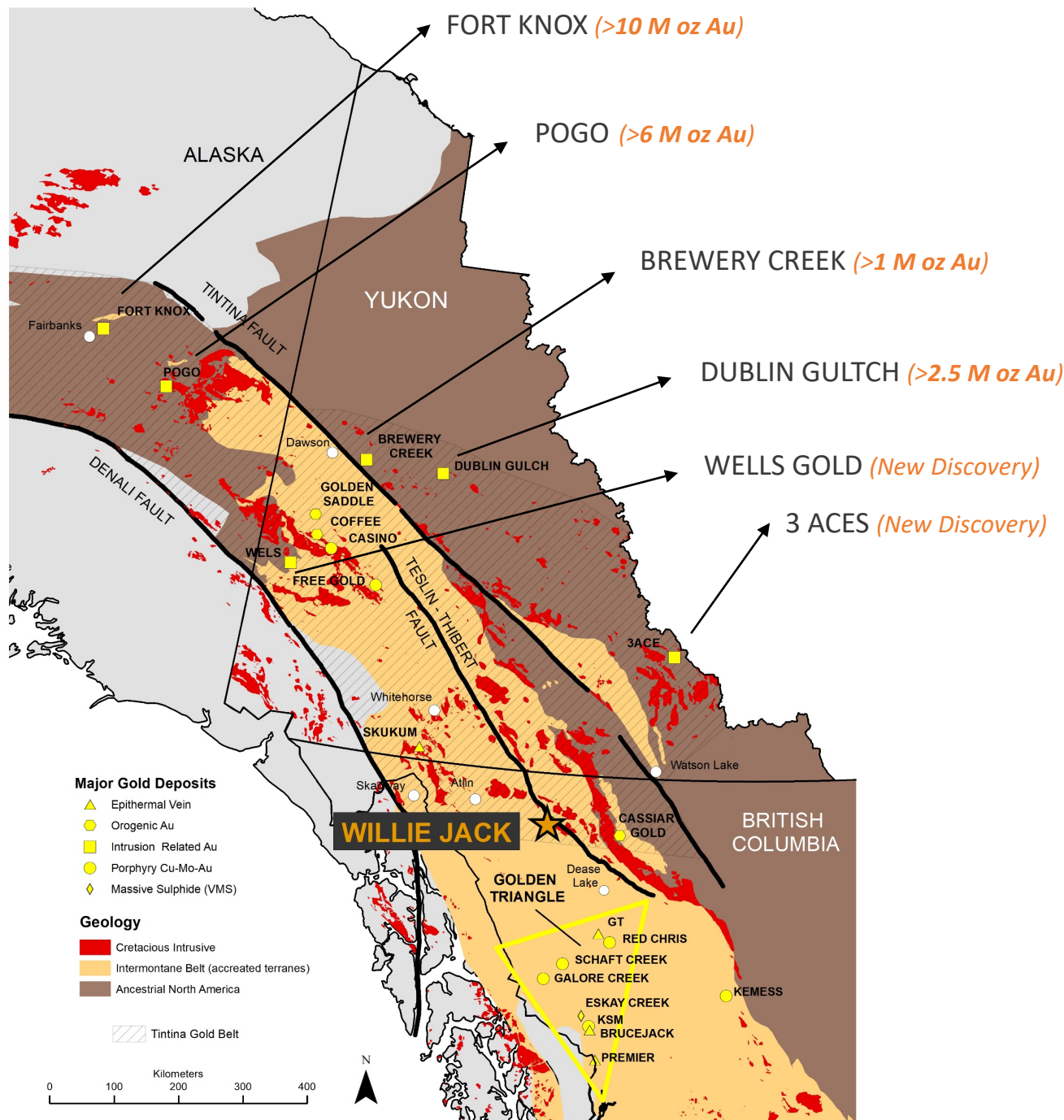
Intrusion-Related Gold



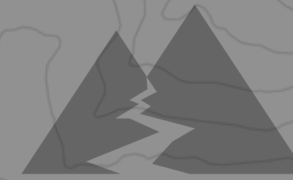
Willie Jack is located at the southernmost end of the prolific **Tintina Gold Belt** which extends across Alaska through Yukon Territory and into northern British Columbia. This belt hosts numerous intrusion-related, orogenic, and porphyry gold deposits with >60 million ounces of gold discovered in the past 25 years.



The combination of widespread auriferous quartz veining hosted in mid Cretaceous intrusives, strong Au-As-Sb regional geochemical signature, and placer gold-bearing creeks suggests potential for a previously unrecognized intrusion-related gold system.



EXPLORATION HISTORY



TRAILBREAKER
RESOURCES LTD.

1969 - 1971

QUEBEC CARTIER MINING COMPANY

Conducted a large, regional scale (1800 sq km) stream sediment sampling program that discovered anomalous copper draining the current Willie Jack property. The stream sediment samples were only analyzed for base metals (no gold).

1912

EARLY PROSPECTORS

Placer gold discovered on Willie Jack Creek

EI PASO MINING

Ei Paso Mining conducted a geological mapping and prospecting program in the area and identified widespread Cu mineralization hosted both in quartz veins and wall rock (granodiorite and monzonite). No geochemical assays for any rock were completed.

2000

GEOLOGICAL SURVEY OF CANADA

Re-analyzed the 1979 stream sediment samples for multiple elements including Au, As, and Sb. These 3 elements are strongly anomalous and closely associated with the historic placer gold creeks that drain the property.

1912

1944

BRITISH COLUMBIA DEPARTMENT OF MINES

Government geologists conducted reconnaissance geological mapping and prospecting in the Atsutla Mountain range and discovered abundant mineralized quartz veining with samples assaying up to 2.06 g/t Au and 72 g/t Ag.

1979 - 1980

GEOLOGICAL SURVEY OF CANADA

Completed a regional stream sediment sample program but no analyses for gold, arsenic, or antimony.

DUPONT CANADA

Exploration followed up on anomalous tungsten and molybdenum stream sediment samples. No analysis for gold.

2000 - 2020

EXPLORATION HIATUS

No known documented exploration has occurred since 1979.

TRAILBREAKER RESOURCES

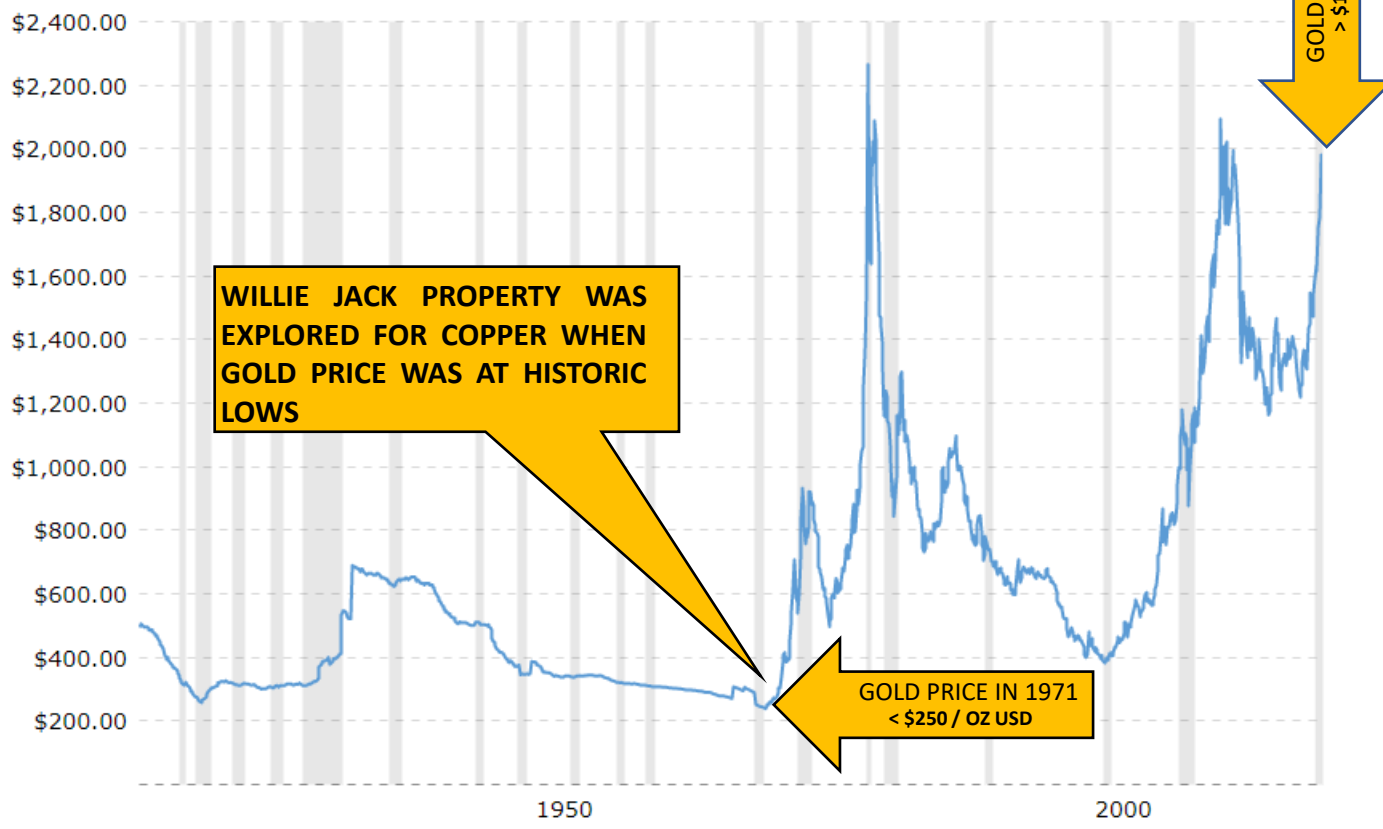
Target generation led to the staking and first pass program that has discovered widespread gold mineralization over 6 kilometres with grab sample grades up to 4.8 oz/ton gold and 7.5 oz/ton silver.

2020

EXPLORATION HISTORY

Continued

GOLD PRICE – ADJUSTED FOR INFLATION



WILLIE JACK PROPERTY WAS
EXPLORED FOR COPPER WHEN
GOLD PRICE WAS AT HISTORIC
LOWS

GOLD PRICE IN 1971
< \$250 / OZ USD

GOLD PRICE TODAY
> \$1900 / OZ USD



Willie Jack was explored for copper in the early 1970s when gold price was at historic lows (<\$250/oz USD).



Due to the low price at the time, gold was overlooked during the only known historic exploration work done on the property.



No geochemical analyses were ever done for gold or silver in the early 1970s.



Willie Jack was staked in 2020 as gold price reached record highs with the first gold-focused exploration program successful in discovering widespread gold mineralization.

GEOLOGY / MINERALIZATION

REGIONAL SCALE



Located in the northwestern portion of the Atsutla mountain range within the Intermontane Belt.



Situated along the regional scale, northwest-trending Teslin – Thibert strike-slip fault system that juxtaposes and divides the Cache Creek and Quesnellia tectonic terranes.



Covers a large, Jurassic age pluton emplaced in Paleozoic sediments of the Cache Creek complex and cut by several small Cretaceous intrusive stocks.

PROPERTY SCALE



Claims cover the southern portion of the Jurassic age Christmas Creek pluton consisting of diorite and monzonite that intrudes the Paleozoic limestones and shales of the Kenda Formation. Several small, younger mid Cretaceous age stocks intrude the older Jurassic age pluton.



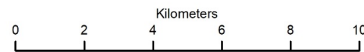
The pluton displays pervasive propylitic alteration with widespread narrow quartz veins containing Cu-Au-Ag mineralization with grab samples up to 164 g/t gold, 257 g/t silver, and 1.7 % copper.



The intrusive is strongly fractured with abundant gossanous, steeply dipping, NE-striking joint surfaces that contain fine disseminated pyrite with anomalous Au and As.



Auriferous quartz veins (up to 0.51 g/t Au) containing minor arsenopyrite are hosted in shales and quartzites at the peripherals of the pluton representing potential skarn mineralization.



BEDROCK GEOLOGY

INTRUSIVE ROCKS

- Cretaceous
- Jurassic
- Paleogene

VOLCANIC

- Tuya Formation (Quaternary)
- Takla Group - Shonektaw Formation (Triassic)
- Cache Creek Complex - Nakina Formation (Carboniferous - Permian)
- Klunkit Group - Butsuh Unit

SEDIMENTARY

- Takla Group - Nazcha Formation (Triassic)
- Cache Creek Complex - Horsefield Formation (Permian)
- Cache Creek Complex - Kedahda Formation (Permian)
- Cache Creek Complex - Teslin Formation (Permian)
- Klunkit Group - Screw Creek Limestone
- Dorsey Complex (Carboniferous - Devonian)
- Swift River Group (Carboniferous)
- Big Salmon Complex (Devonian to Carboniferous)

— Regional Scale Mapped Faults

LEGEND

- Willie Jack Property Outline
- ★ Mineral Occurrence
- Historic Placer Bearing Creek

STREAM GEOCHEMISTRY

- Cu > 90 percentile
- Sb > 90 percentile
- As > 90 percentile
- Au > 90 percentile
- sample = < 90 perc (Au, As, Sb, Cu)

CHARLIE COLE
PLUTON

TESLIN - THIBERT FAULT

Big Salmon Complex

JENNINGS RIVER

Shonektaw Creek

Stream Sediment
98th percentile Cu

CHRISTMAS CREEK
BATHOLITH

Stream Sediment
99th percentile Au & As

Xmas Creek

Willie Jack Creek

Tanah Creek

Placer Gold
Bearing Creek

CACHE CREEK COMPLEX
Kedahda Formation

25 KM

Kedahda Lake

TAKLA GROUP
Shonekta Formation

GLUNDEBERY
BATHOLITH

TESLIN RIVER

DISCOVERY

*Widespread High Grade Gold and Silver Rock
Grab Samples over 6 kilometres*

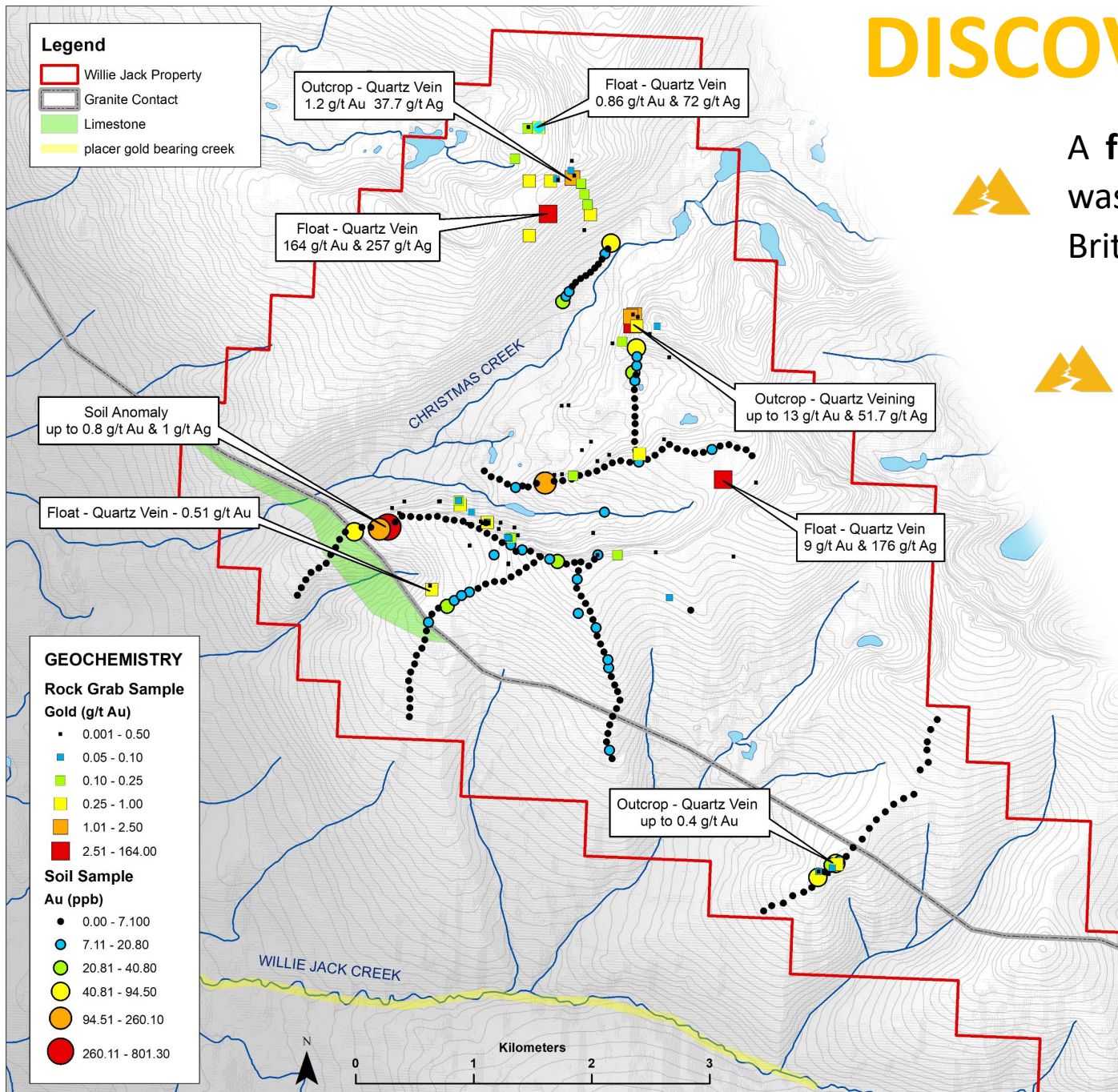
A first pass, 7-day reconnaissance exploration program was conducted to evaluate this underexplored region of British Columbia in the summer of 2020.

The program consisted of ridge-and-spur soil sampling and prospecting with a total of 185 soil samples and 94 rock grab samples.

Widespread high grade gold mineralization was discovered over 6 km with best grab samples assaying **164 g/t Au & 257 g/t Ag** and soil samples assaying **up to 0.8 g/t Au**

Mineralization includes:

- Cu-Au-Ag-(Pb) quartz veins hosted in the granite
- Arsenopyrite-bearing quartz veins hosted in the sediments
- Gossanous pyritic granite



SOIL GEOCHEMISTRY

4.5 km long Gold Skarn Geochemical Signature



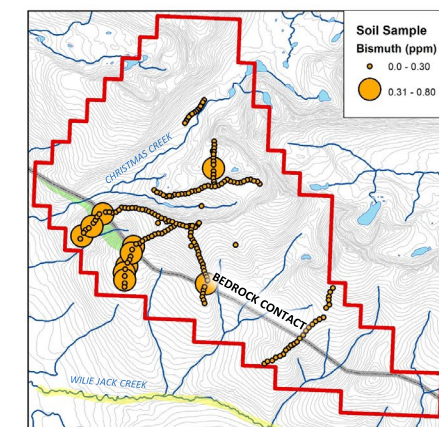
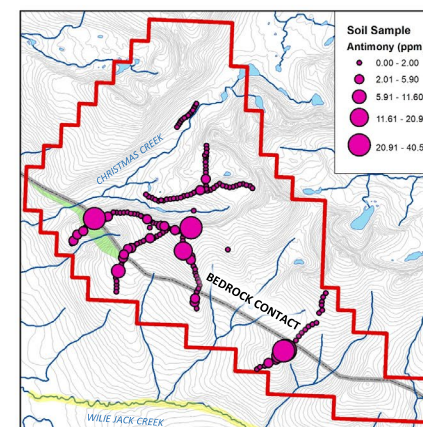
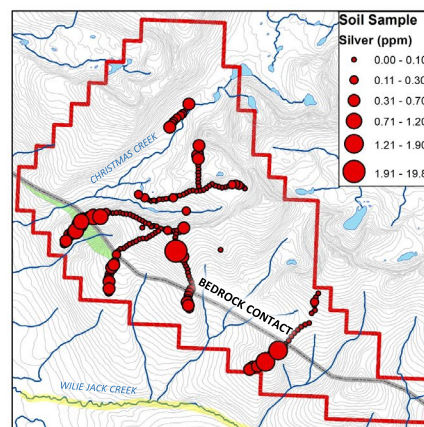
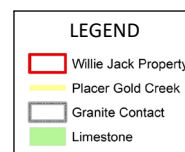
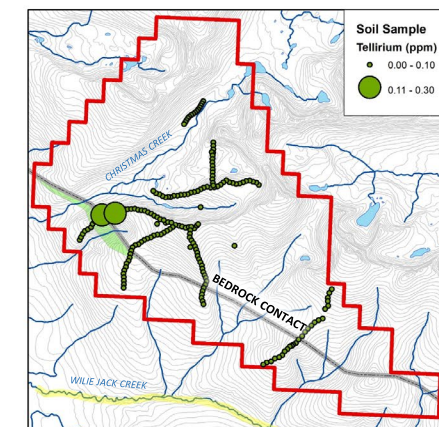
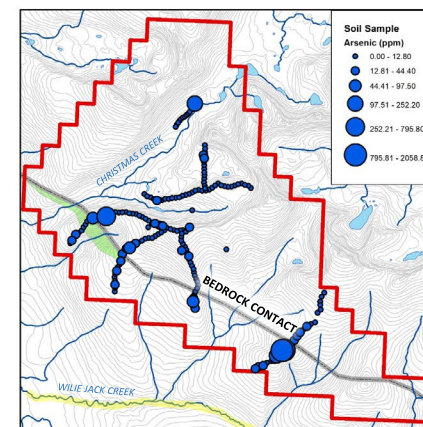
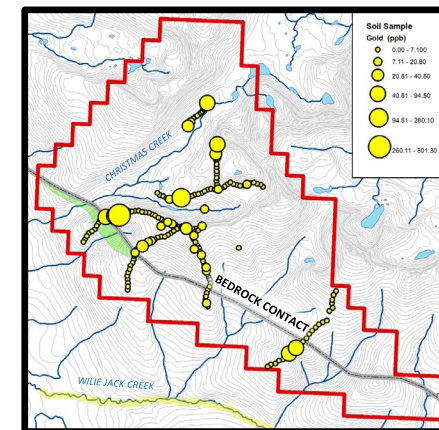
A robust Au-As-Ag +/- Bi-Sb-Te soil anomaly discovered along the peripheral of the granite pluton suggests gold skarn mineralization. First pass prospecting near the soil anomalies returned grab samples that assayed up to 0.51 g/t Au in quartz veins.



This gold skarn geochemical signature has been traced along the granite contact for over 4.5 kilometres and remains open to the NW and SE. This anomaly directly drains into the placer gold-bearing Willie Jack Creek and is believed to represent the lode gold source.

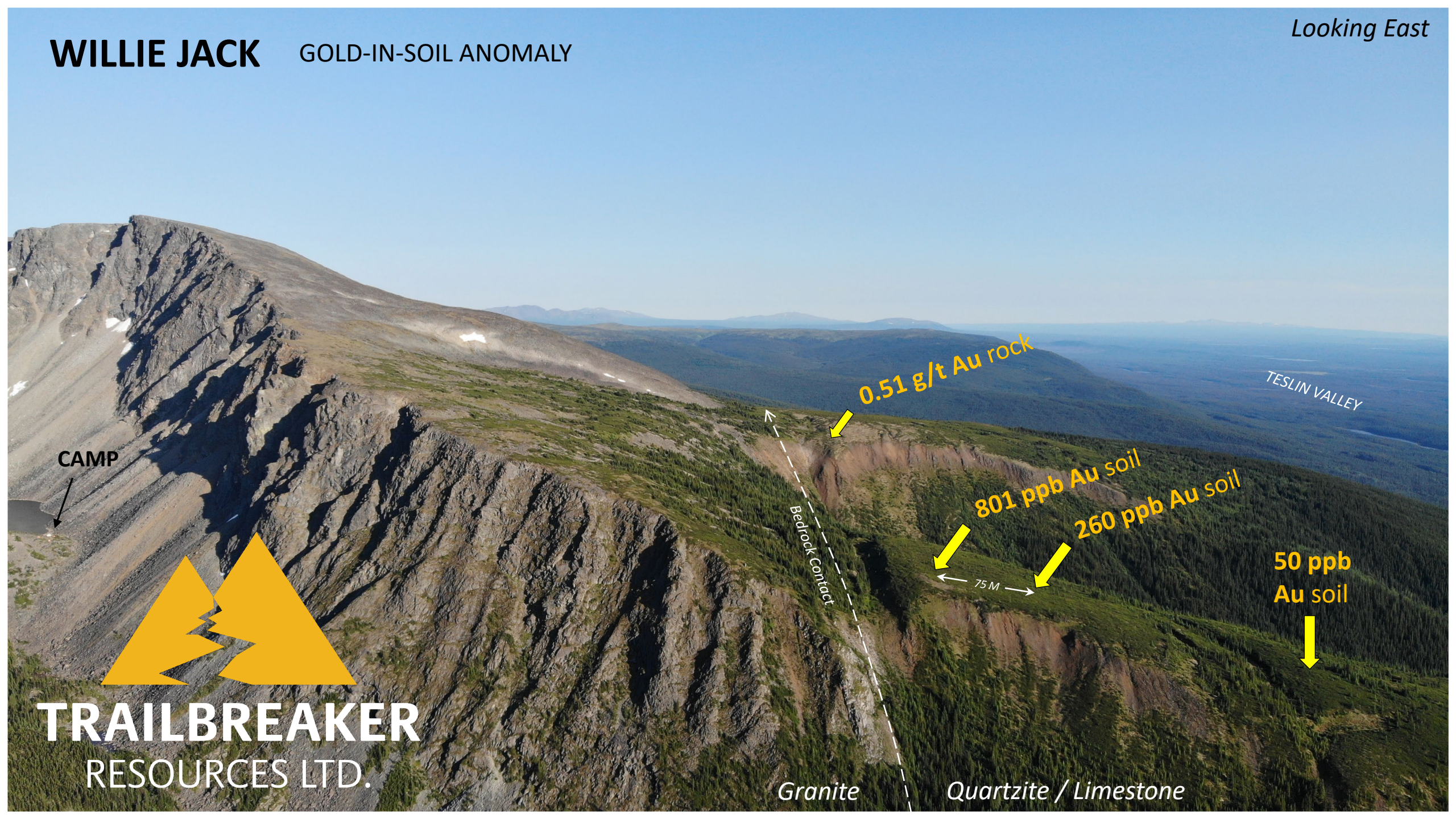


This gold skarn soil anomaly has not seen any follow-up to date and remains a top priority for the 2021 field season. Detailed soil surveys and prospecting will be designed to expand and define the mineralization for potential drill targets.



WILLIE JACK GOLD-IN-SOIL ANOMALY

Looking East



CAMP

0.51 g/t Au rock

TESLIN VALLEY

801 ppb Au soil

260 ppb Au soil

50 ppb Au soil

Bedrock Contact

75 M

Granite

Quartzite / Limestone



TRAILBREAKER
RESOURCES LTD.

Looking
North

3 KM

Float (grab sample)
164 g/t Au & 257 g/t Ag

Outcrop (gab samples)
Up to 13.9 g/t Au & 51.2 g/t Ag

Outcrop (grab sample)
0.60 g/t Au & 28.1 g/t Ag

Float (grab sample)
9.1 g/t Au & 176 g/t Ag

Soil Sample
0.2 g/t Au

CAMP



TRAILBREAKER
RESOURCES LTD.

WILLIE JACK
WIDESPREAD HIGH GRADE
GOLD & SILVER MINERALIZATION



TRAILBREAKER

RESOURCES LTD.



0.54 g/t Au

grab sample – gossanous diorite (fine disseminated pyrite)



Gossans - weak Au and As enrichment

Gold & Silver Bearing Grab Samples



0.51 g/t Au

grab sample – weakly mineralized quartz vein



164 g/t Au & 257 g/t Ag

grab sample – oxidized quartz vein



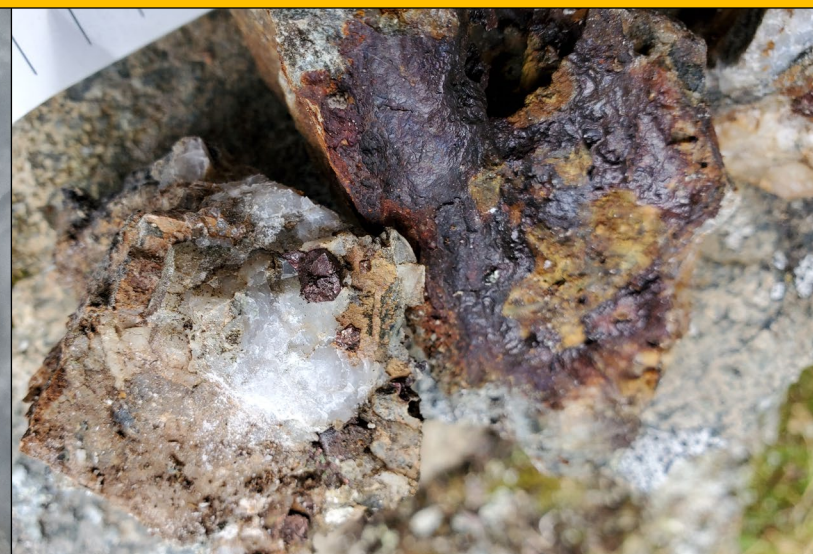
9.1 g/t Au & 176 g/t Ag

grab sample – oxidized quartz vein with 2% limonitic pyrite



1.4 g/t Au & 51.7 g/t Ag

grab sample – quartz vein with minor galena



13.9 g/t Au & 25.8 g/t Ag

grab sample – oxidized quartz vein with pyrite



2.0 g/t Au & 24.4 g/t Ag

grab sample – oxidized quartz vein with chalcopyrite

Copper Bearing Grab Samples



3.3 g/t Ag, 1.0 % Cu

grab sample – quartz vein with chalcopyrite



0.25 g/t Au, 9.5 g/t Ag, 0.8 % Cu

grab sample – granodiorite with Cu oxides (malachite and azurite)



1.74 % Cu

grab sample – granite with Cu oxides (malachite and azurite)

Head Office

Trailbreaker Resources Ltd.
1040 W Georgia St# 1500
Vancouver, British Columbia
Canada V6E 4H1

Phone: (604) 681-1820

Email: info@TrailbreakResources.com

Website: TrailbreakerResources.com



TRAILBREAKER
RESOURCES LTD.